



Practical information: summary

>> Please have a look at the [IMSC global map](#) where you can find most of the information.

The venue

Météo-France

Centre International de Conférences (CIC)

42, avenue Gaspard Coriolis

31057 Toulouse cedex 1

<http://www.meteo.fr/cic/meetings/venue.html>

>> On your day of arrival, you will be asked to show your passport/ID at the Météo-France entrance in order to access the Conference Center. Once registered, it is requested that you wear your conference badge permanently on the campus.

Transport (please click on the links to get detailed information)

[From the airport to city center: bus shuttle.](#)

[From the airport to Météo-France: taxi.](#)

[From the city center to Météo-France: underground A line to Basso Cambo + bus \(IMSC or n°18\).](#)

[You can also ride a bike!](#)

Conference hours

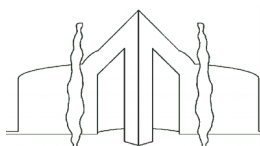
- Monday: welcome from 9:00 to 10:30. IMSC buses leave Basso Cambo at 9:30.
- Other days: sessions start at 9:00. IMSC buses leave Basso Cambo at 8:40.

Social events (please click on the links to get detailed information or see the [IMSC global map](#))

- [Monday: icebreaker](#) at Conference Center. IMSC buses will bring you back to the city center.
- [Tuesday: conference diner](#) at Hôtel-Dieu, starting at 19:30.
- [Thursday \(option 1\): wine tasting on a barge on the "Canal du Midi"](#), starting at Port Saint Sauveur at 18:30. IMSC buses will bring you there after the sessions.
- [Thursday \(option 2\): guided tour of Toulouse](#), starting at the Tourist Information Center at 18:30. IMSC buses will bring you to Basso Cambo station, then take the underground A line to Capitole.

What's included in the registration fee?

Access to the conference, all coffee breaks and lunches, all social events (icebreaker, conference diner, and one activity on Thursday evening), and public transportation tickets.



14th INTERNATIONAL MEETING ON STATISTICAL CLIMATOLOGY
Toulouse, June 24-28, 2019.

PRACTICAL INFORMATION

Travel information	3
Toulouse	4
Transport general information	5
Commuting between Toulouse city center and Météo-France	6
Venue	7
Registration	8
Instructions for authors	8
Social events	8



TRAVEL INFORMATION

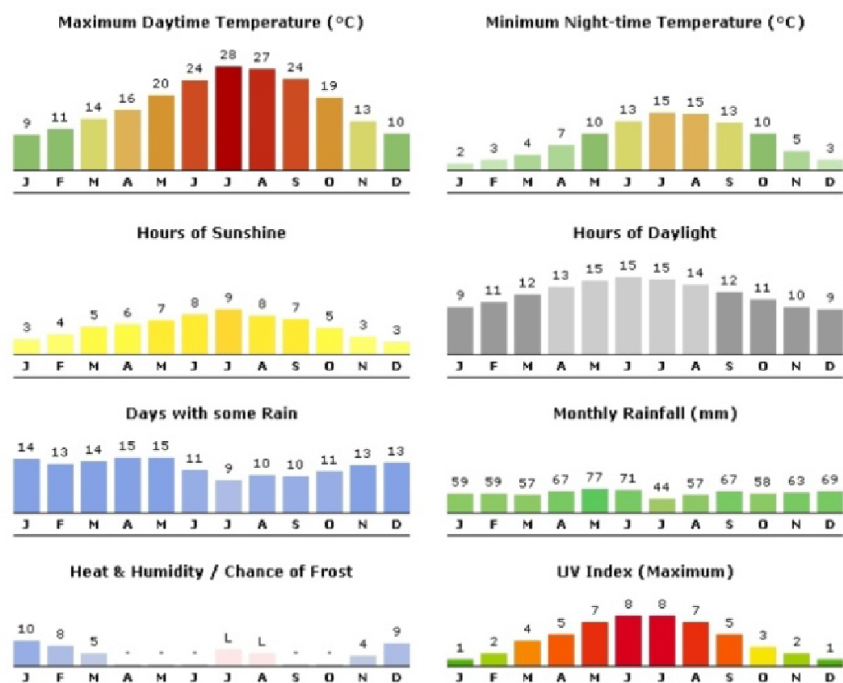
Toulouse

Nested between the Mediterranean, the Atlantic at the foot of the Pyrenees mountains and bordered by Spain, Toulouse is one of the most vibrant cities in France enjoying sunny weather all year long. "La Ville Rose" gets its popular name from the small bricks made from local clay used in many of its older buildings. Today, Toulouse is a center for aviation, space industry and high-tech business, and has the second largest student population in France, making it a vibrant and cosmopolitan city.



Climate

Toulouse is located in the south of France and enjoys a mild climate. During the warmest months of July and August the temperature remains constant between 26-27 degrees Celsius. These are extremely pleasant temperatures, especially for touring around. Toulouse gets the most rainfall during the month of May, and the least amount of rainfall occurs during July. The best times to visit Toulouse are probably during spring and summer... having the IMSC in the end of June was not random ;-)



Clothing

Bring light, summer clothing with a long sleeved jacket for the nights. Do not forget a sun cream.

Currency

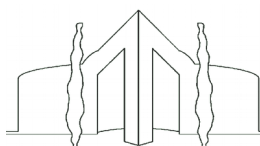
The legal currency in France is the euro (€)

1€ = 0.88 £, 1€ = 1.12 \$, 1€ = 122.01 JPY, 1€ = 7.71 CNY.

Electricity

Voltage and frequency: 220–240 V / 50Hz Plug types: C and E/F

You may need an adapter and/or a transformer, you can buy one at the airport.



TOULOUSE

Accommodation

A list of recommended hotels can be found on the Conference Center website:

http://www.meteo.fr/cic/meetings/hotels_list.html

We recommend that you stay in the city center to enjoy Toulouse, possibly close to the underground A line to connect Météo-France.

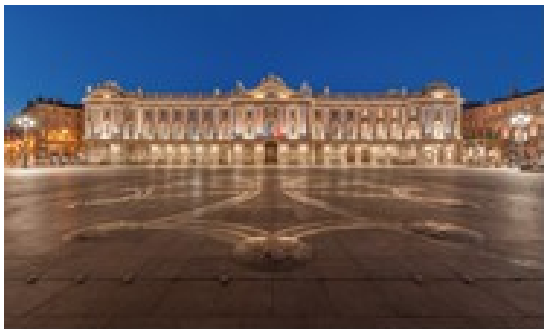
Restaurants and bars

Most of the restaurants and bars are located in the city center. Restaurants offer local products such as foie gras, duck breast, cassoulet, Toulouse sausage, wine (e.g. Fronton, Gaillac), cheese (Roquefort, Tomme des Pyrénées), or violet treats. Bars often propose various collections of tapas, so that you can have drinks and (simple) diner at the same place.

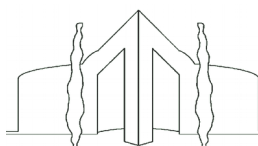
Restaurants and bars are generally small in Toulouse. It is preferable to split into small groups (10 people or less) in order to get a table. Booking in advance is also a good idea. Some restaurants do not open before 20:00.

Touristic places

Majestic churches, mansions built during the Golden Age of the Pastel trade and houses with stunning terracotta decorations should all be on your list of places to see during your stay. Amongst the wonderful cultural heritage to visit are the Saint-Sernin Basilica, the Les Jacobins monastery complex and, of course, the impressive Capitole and its square.



Please have a look at the [IMSC global map](#) where we have indicated suggestions for restaurants, bars and touristic places.



TRANSPORT GENERAL INFORMATION

Getting to Toulouse

By plane, you will arrive at Toulouse Blagnac airport, located a few kilometers west of Toulouse. Options to connect the city center or Météo-France are detailed below.

By train, you will arrive to Toulouse Matabiau station, located in the city center of Toulouse.

From the airport to Toulouse city center

From the airport, take the [airport shuttle](#), get off either at Allées Jean Jaurès or Matabiau (about 20 minutes of travel). The shuttle departs every 20 minutes, 7 days a week, and costs 8€.

You can also use the tramway, which will bring you to underground stations (e.g. Arènes, on the A line). You will need about 45 minutes overall to reach the city center.

From the airport to Météo-France

From the airport, the fastest way to reach Météo-France is to take a taxi, the ride lasts about 15 minutes and costs around 30€.

A cheaper (but longer) alternative is to take the tramway to Arènes, then the underground A to Basso Cambo, and finally the bus to Météo-France (see bus details below).

The staff of the Conference Center will help to book collective taxis to go to the airport at the end of the conference on Friday; please let them know the time of your flight.

Public transportation in Toulouse

Information on public transportation around Toulouse can be found on <http://www.tisseo.fr/>, see in particular the [general map](#) or the [detailed map](#) (including buses) of the network. You can also refer to the [IMSC global map](#).

Important: on Monday and Tuesday nights, underground A line will exceptionally stop at 20:30.

One-way tickets cost 1.70€, return tickets (2 travels for 1 person) cost 3.10€ and a ten journey pass (10 travels) prices 13.40€. You can use the same ticket during one trip, i.e. re-use the same ticket if taking the bus after the underground. You can purchase tickets in tramway or underground stations (easy), or in buses (exact change required, credit card not accepted).

Important: a 10-travel pass is included in the registration fee.

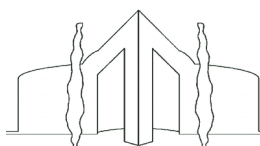
Biking

Biking is a simple and efficient way to visit Toulouse and commute to Météo-France from the city center (see itinerary below). You can rent a bike at low cost at [La Maison du Vélo](#) (for the whole week). You can also use [VelÔToulouse](#), the public bicycle sharing system in Toulouse (see [instructions](#) and the [list of stations](#)). Note that the closest station to the venue is at walking distance (about 500m).

Taxi companies

Capitole Taxi: +33 (0) 534 250 250

Allo Taxi 31: +33 (0) 562 212 000



COMMUTING BETWEEN TOULOUSE CITY CENTER AND METEO-FRANCE

Métro + bus (see the [IMSC global map](#))

From the city center, take the **underground A line to Basso Cambo** (terminus).

Then, you will have to take a bus to Météo-France (MF): special IMSC bus or bus 18 (see below).

The travel will take about 45 minutes all together.

* Special IMSC buses:

- on Monday morning, parking at Basso Cambo from 9:00, last departure at 9:30.
 - on all other mornings, parking at Basso Cambo from 8:20, last departure at 8:40.
 - in the evening, departure from MF at the end of the sessions (icebreaker on Monday).
- Pick-up / drop-off location at Basso Cambo will be in front of the “Quick” fast-food (map below).

* Regular bus number 18 (see [timetable](#) – in French only):

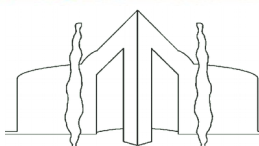
- from Basso Cambo to MF, follow direction “Cité Scolaire Rive Gauche” & get off at MF stop.
- from MF to Basso Cambo, follow direction “Basso Cambo” (pay attention!) & get off at terminus.

N.B. Bus number 21, which comes close to the campus (alight at “Vandel”) can also be used.



Bike itinerary

From the city center (Esquirol), the route to Météo-France is about 6.5 km long, mostly flat and with bike lanes. We have created an itinerary that starts from Esquirol; you can either print it or download the .gpx file: <https://www.strava.com/routes/18978079>



VENUE

The International Conference Center of Météo-France

Located on the outskirts of Toulouse, only a few kilometers from the international airport of Toulouse Blagnac, the International Conference Center is located on the main campus of Météo-France. It is run by a team of professionals entirely devoted to organising and supervising events in a friendly atmosphere. This efficient, enthusiastic and attentive team will take care that your every need will be met to your entire satisfaction.

On your day of arrival, you will be asked to show your passport/ID at the Météo-France entrance in order to access the Conference Center. Once registered, it is requested that you wear your conference badge permanently on the campus.

Cashpoint (ATM)

A Cashpoint (ATM) is located on the ground floor of the administrative canteen.

Internet access

Wifi is available everywhere within the Conference Center. Look for the nearest hotspot and enter your details including your mobile number (hotspots: hall, amphitheatre, Prud'homme/rooms 3 & 4, Guy der Megreditchian/rooms 1 & 2). Then you will receive a code by SMS, the connection lasts the duration of the event.



REGISTRATION

Registration will take place on Monday morning in the Hall of the Conference Center from 9:00 to 10:30. Participants are invited to collect their conference kit and badge, and a welcome coffee will be served. On-site payment is possible by credit card.

The registration fee includes the access to the conference, all coffee breaks and lunches (Monday to Friday), all social events (see below) and public transportation tickets.

INSTRUCTIONS FOR AUTHORS

Plenary speakers have been allocated a 30-minute time slot. Parallel talks (or "regular oral") have been allocated a 20-minute time slot. These time slots include both the talk and the questions, and it is highly recommended that speakers save 5 minutes for questions. All speakers are requested to upload their presentations before the start of their session. Files should be prepared in pdf, ppt or pptx, and both 4:3 and 16:9 formats are accepted.

Posters should be prepared in A0 portrait format. There is no possibility to print posters on-site. There will be two poster sessions: one on Tuesday afternoon, one on Thursday afternoon. Tuesday's posters can be displayed from Monday morning to Wednesday noon; Thursday's posters can be displayed from Wednesday noon to Friday afternoon. Presenters are requested to stay close to their posters only during their poster session.

SOCIAL EVENTS

Monday: Icebreaker

An icebreaker will be held on Monday at the Conference Center at the end of the day's sessions, from 18:00 to 20:00. Three special buses towards Toulouse city center will depart from the Conference Center at the end of the icebreaker, between 20:00 and 20:30.

Tuesday: Conference diner

The conference dinner of Tuesday evening will be held at Hôtel-Dieu, in downtown Toulouse. Aperitif will start at 19:30 and dinner at 20:30.

Thursday (option 1): Wine tasting

Wine tasting on Thursday evening (19:00–21:00), with drinks and food, will take place on a barge on the "Canal du Midi", starting from Port Saint Sauveur, in downtown Toulouse. Special buses will transport attendees from the Conference Center to Port Saint Sauveur at the end of the day's sessions (about 17:50).

Thursday (option 2): Guided tour of Toulouse

The guided tour of Toulouse on Thursday evening will start at 18:30 and end near 20:30. Note that this is a walking tour. The meeting point is at the Donjon du Capitole, in front of the Tourist Information Center in downtown Toulouse. A special bus will depart from the Conference Center at the end of the day's sessions (about 17:50) towards the Basso Cambo underground station, where attendees can take the underground A line towards Balma-Gramont and get off at the "Capitole" station.

Please have a look at the [IMSC global map](#) where social events are indicated.

