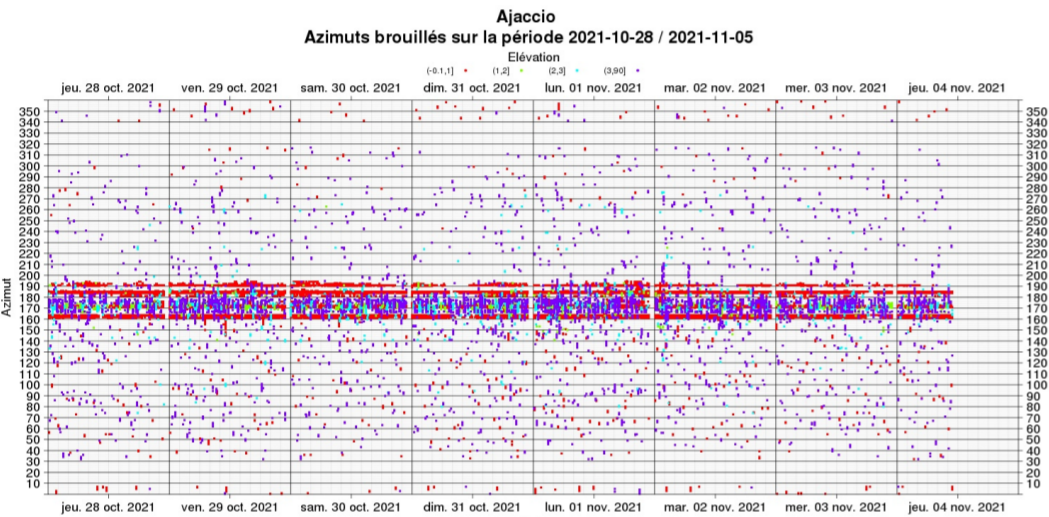
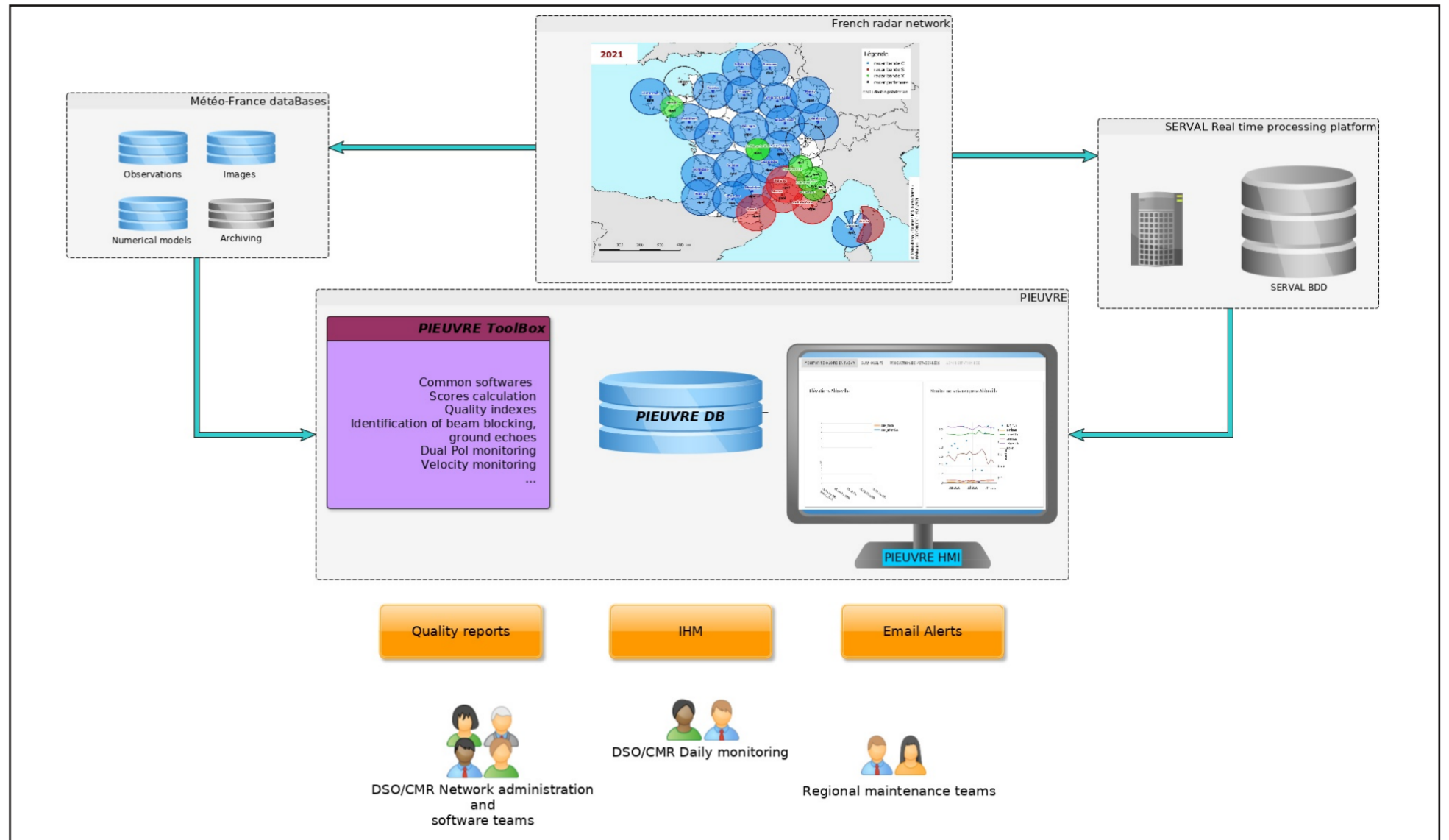


Isabelle Sanchez, Tom Nicolau, Béatrice Fradon, Nicolas Gaussiat, Jean Millet, Alexane Lovat, Dominique Raina
 Novembre 2021

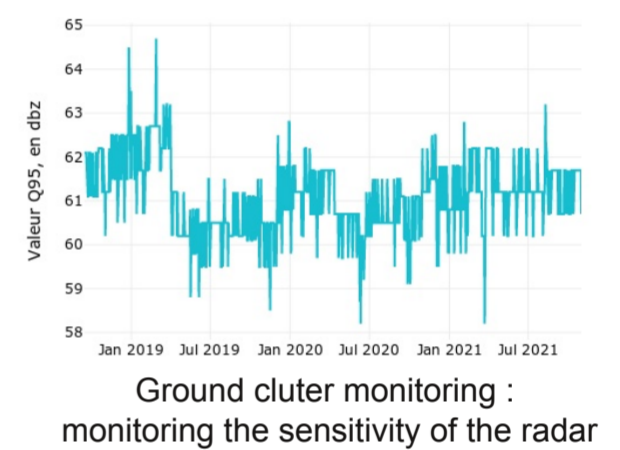
PIEUVRE : Work in progress !

- **PosgreSql database** containing a long term history of monitoring parameters : radar operating conditions, quality indicators, statistical scores...
- Modernized **toolbox**, mainly developed using **Python and C++** libraries, producing :
 - ➔ metadata for real-time data processing,
 - ➔ scores and quality indices
 - ➔ hourly, daily, monthly... monitorings
- **HMI (Network / java-scripts / django)**
 - ➔ linked to the database
 - ➔ interactive graphic plots
 - ➔ database administration ...



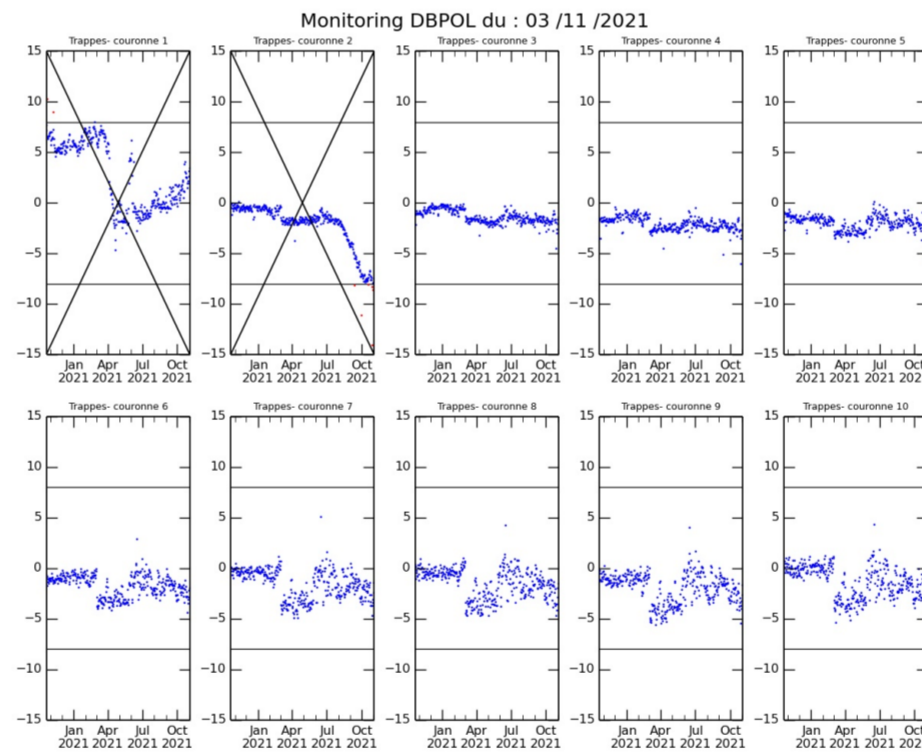
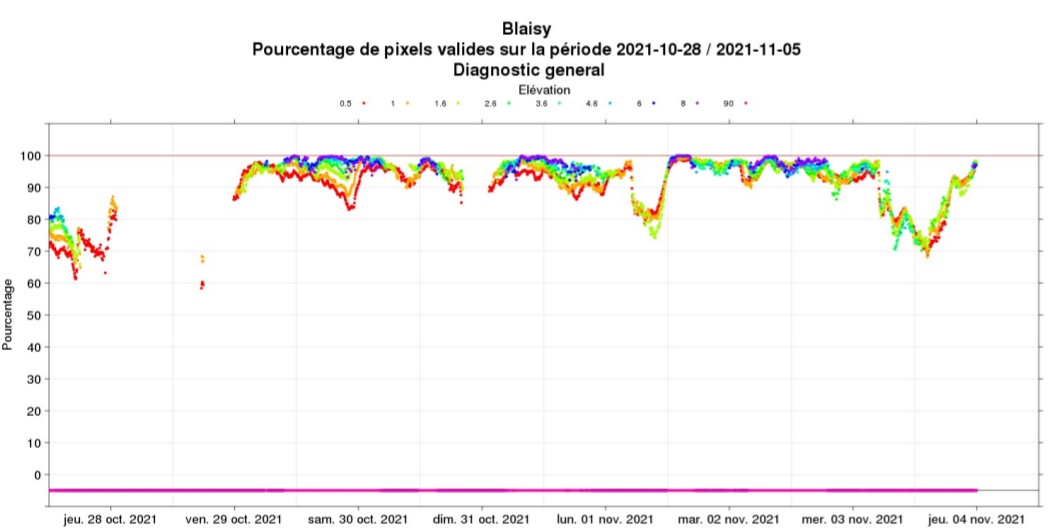
Monitoring the network

- Ground clutter intensity
- Interferences detection
- Radial velocity monitoring
- Dual Polarimetry monitoring
- Solar monitoring

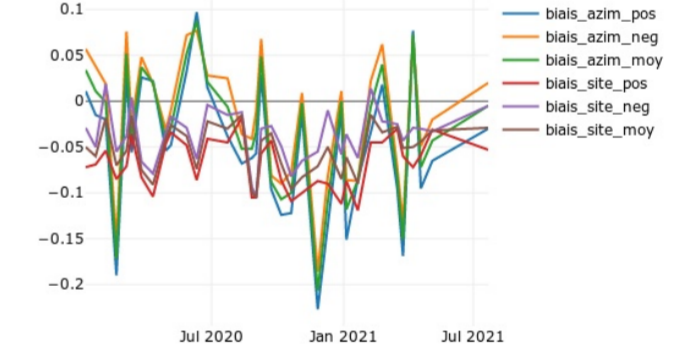


Ground clutter monitoring : monitoring the sensitivity of the radar

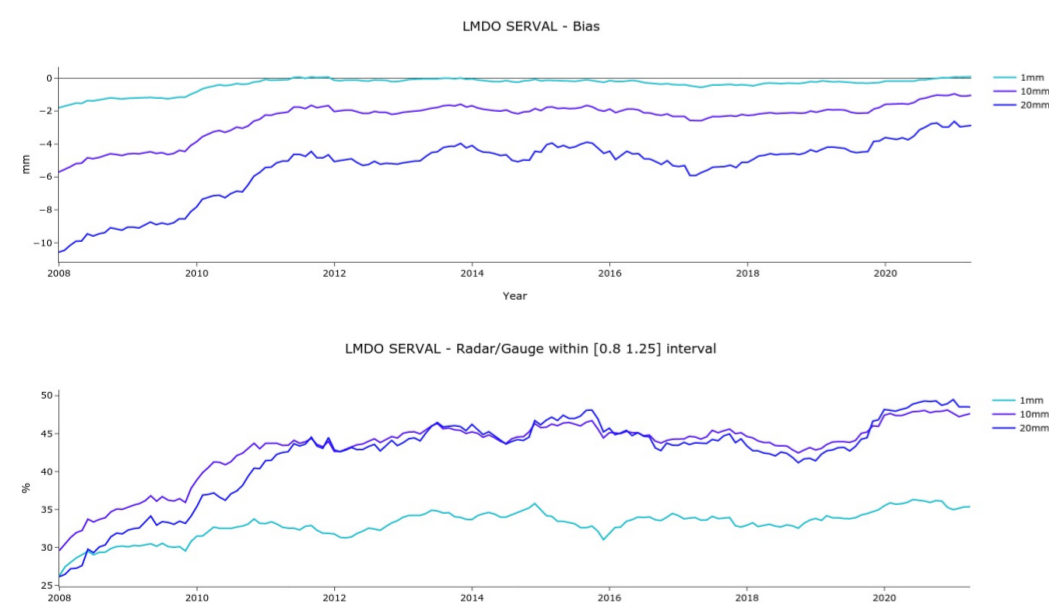
Interference detection based on the correlation between consecutive rays



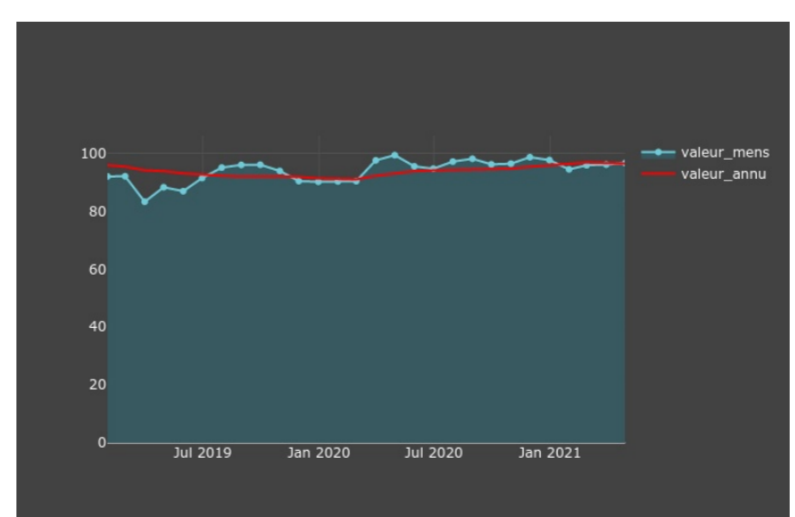
Monitoring of TR tube health : averaged ZDR amongs 1km rings



Solar monitoring : check the antenna pointing



Quality improvements on radar estimations : Bias and Percent correct

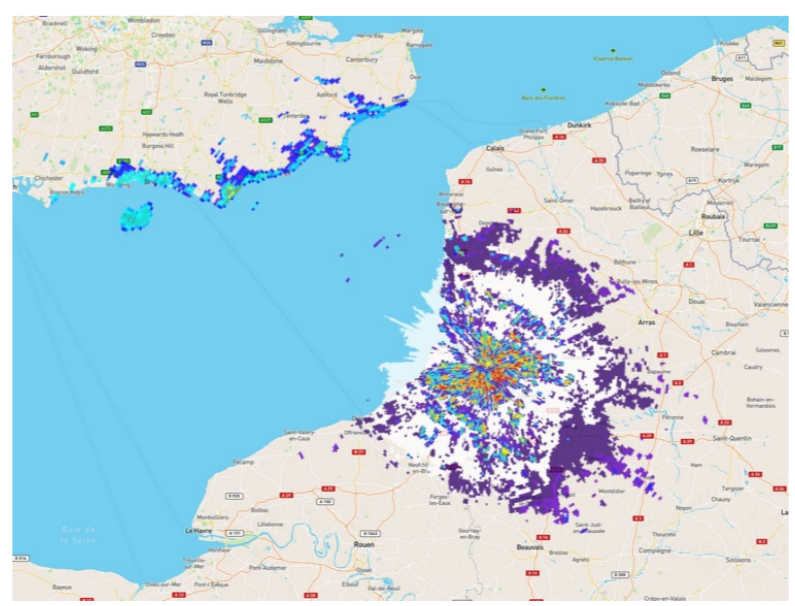


Availability rate of raw data

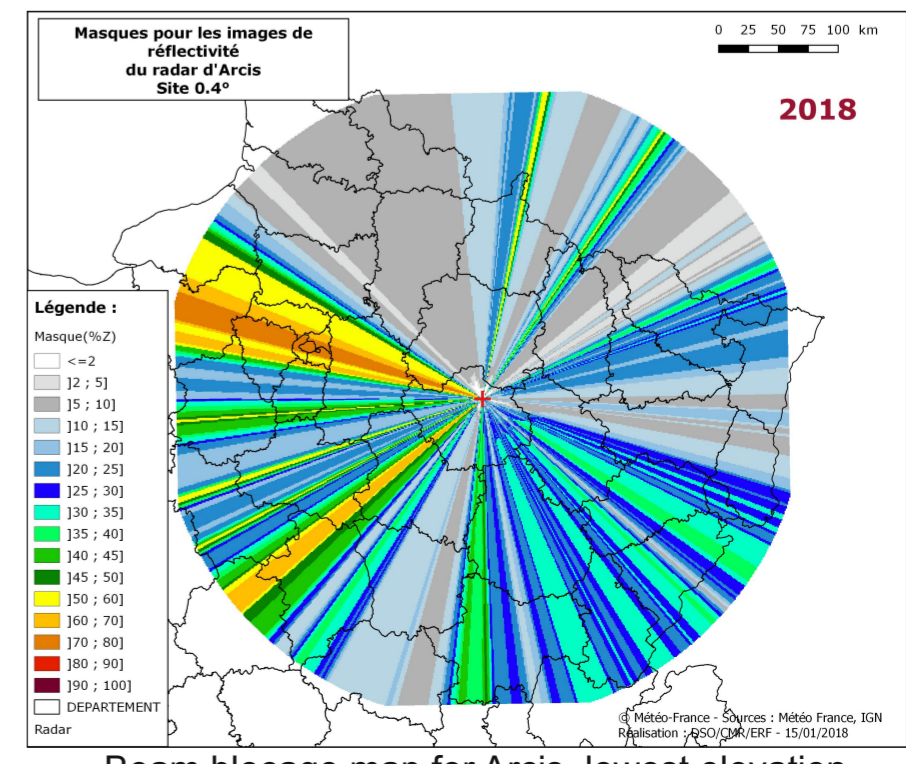
- ### Quality indices and scores
- Raw data production rate
 - Maintenance response time
 - Frequency of scheduled visits
 - Percentage of receiver calibrations ...
 - Accuracy, Bias, Probability Of Detection, False Alarm Rate...

Metadata production for corrections by real time process SERVAL

- Ground clutter identification
- Beam blockage map
- Mean adjustment factor to rain-gauges



Ground clutter identification for Abbeville



Beam blockage map for Arcis, lowest elevation