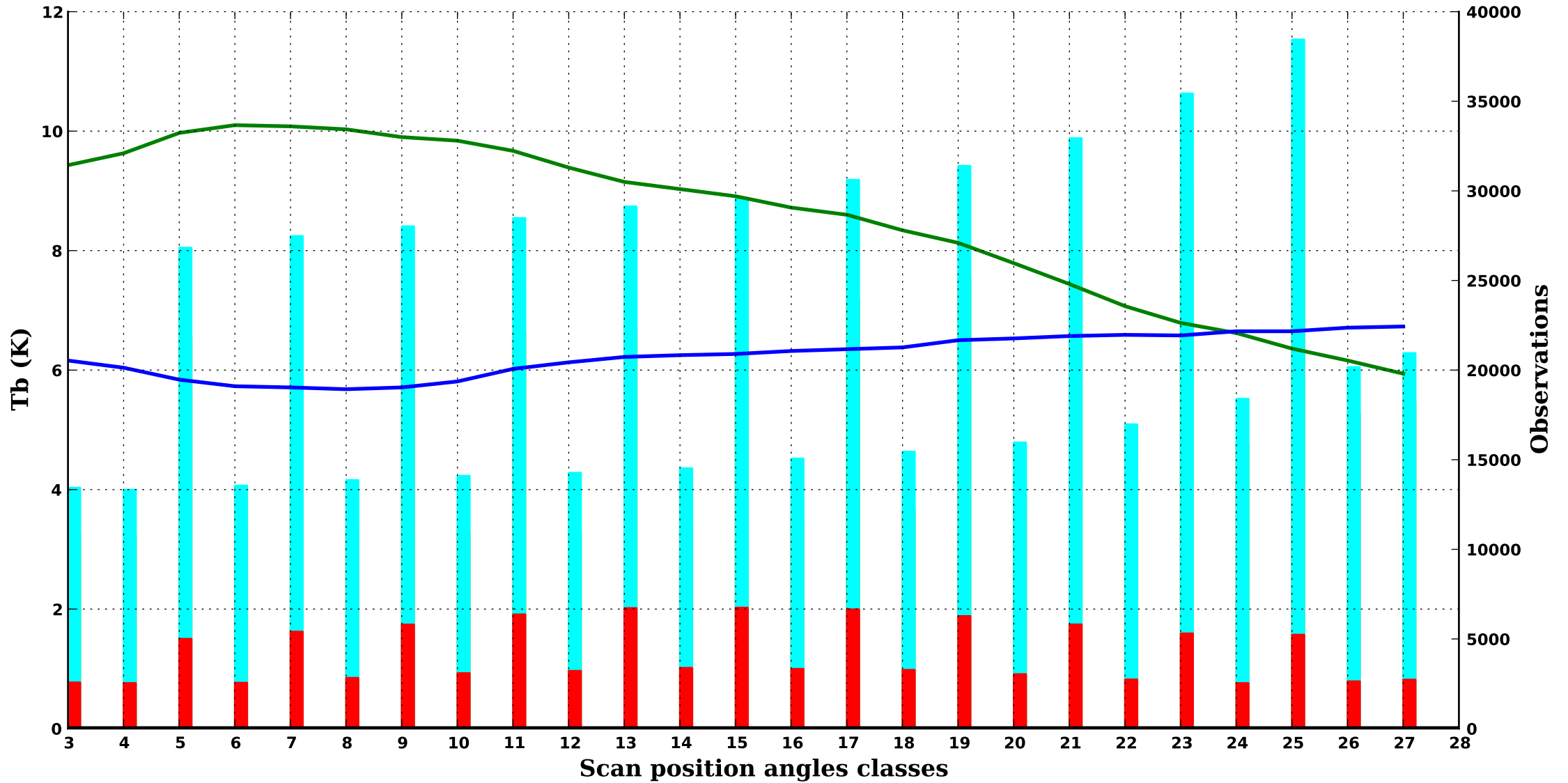


*cloudy/sea ice*

**AMSU-B 1**

**1000 hPa**



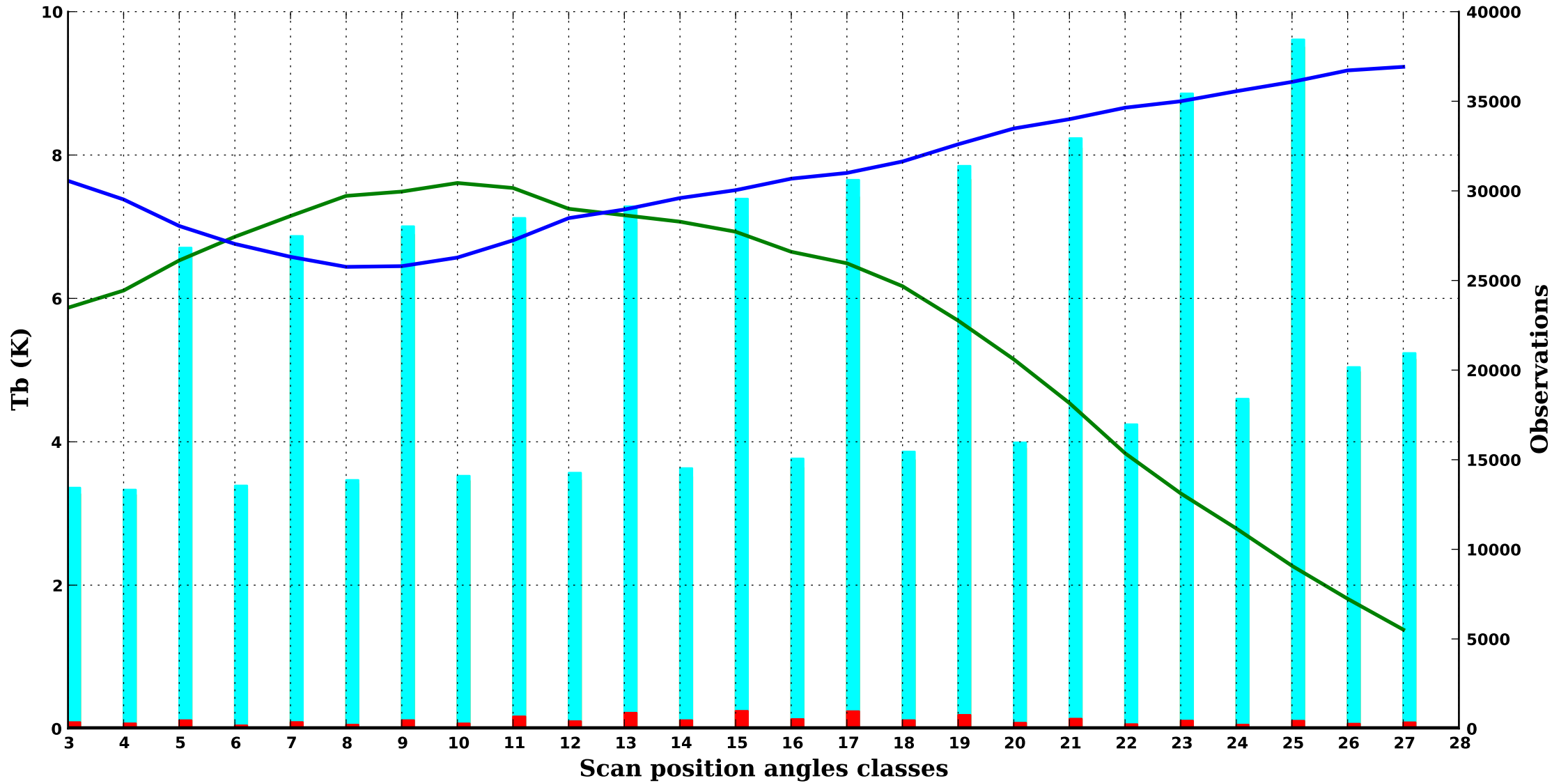
**METOP B**

*Period : 202409*

*cloudy/sea ice*

**AMSU-B 2**

**1000 hPa**



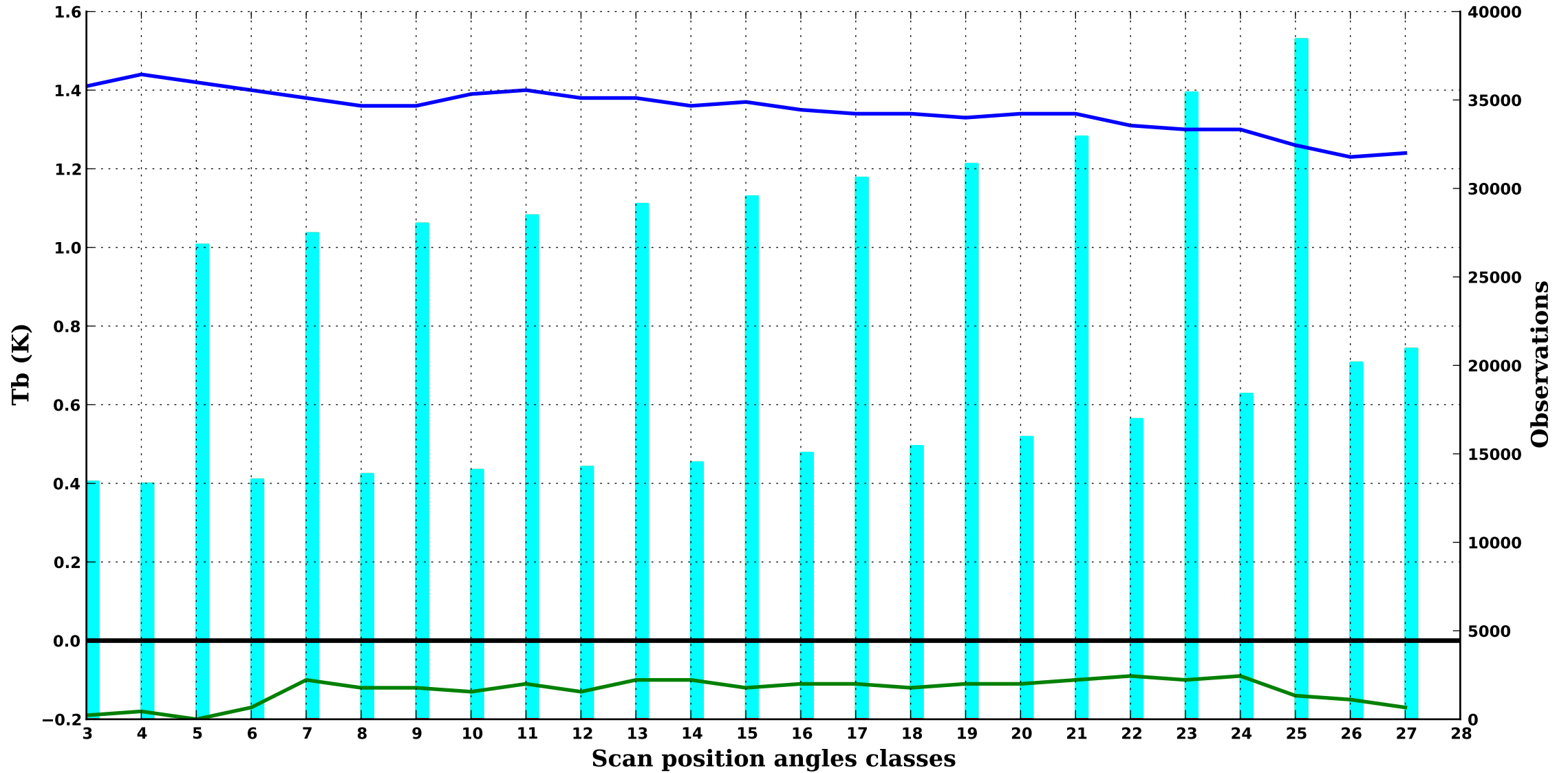
**METOP B**

*Period : 202409*

*cloudy/sea ice*

**AMSU-B 3**

**350 hPa**



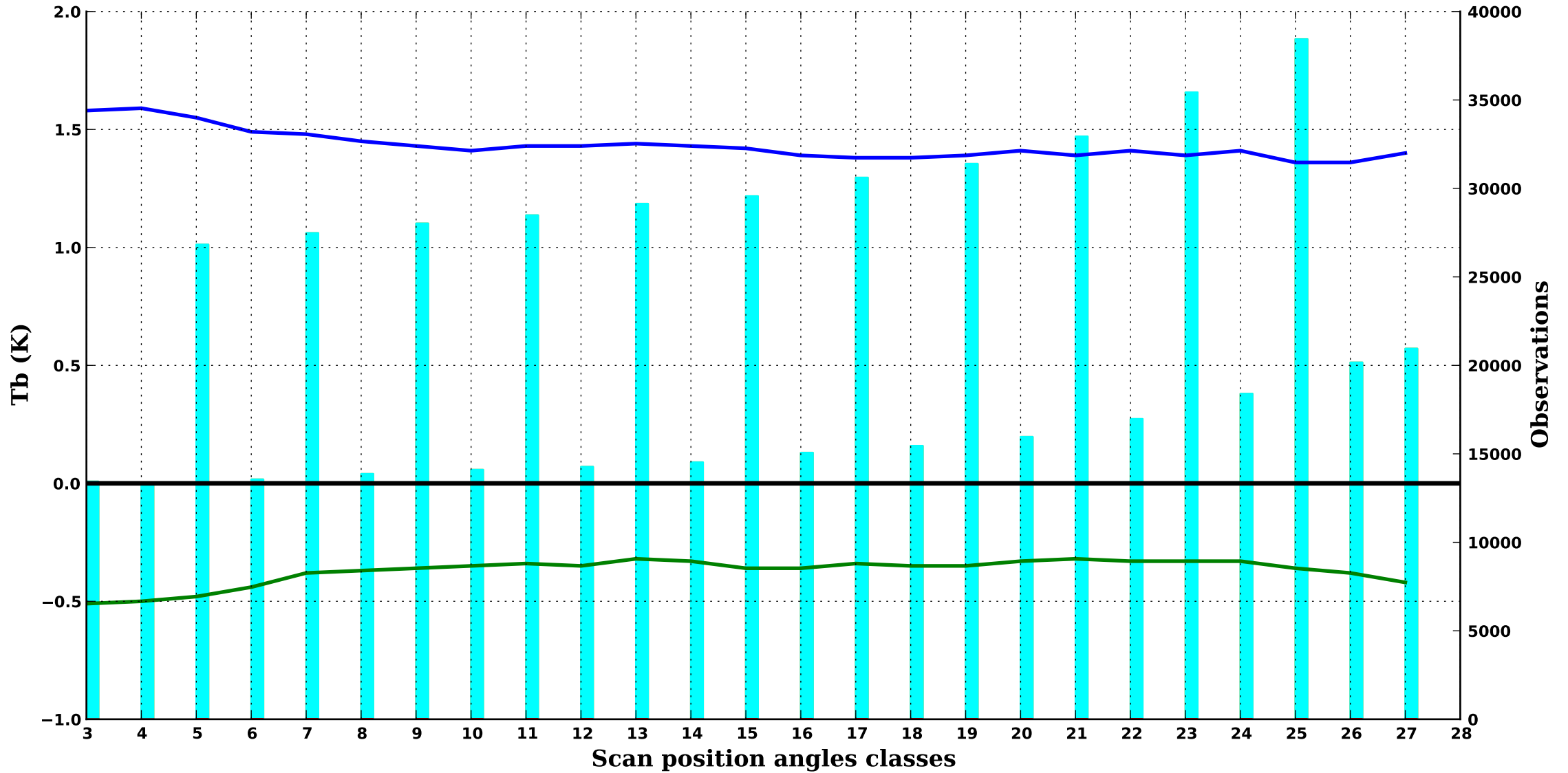
**METOP B**

*Period : 202409*

*cloudy/sea ice*

**AMSU-B 4**

**500 hPa**



**METOP B**

*Period : 202409*

*cloudy/sea ice*

**AMSU-B 5**

**700 hPa**

