

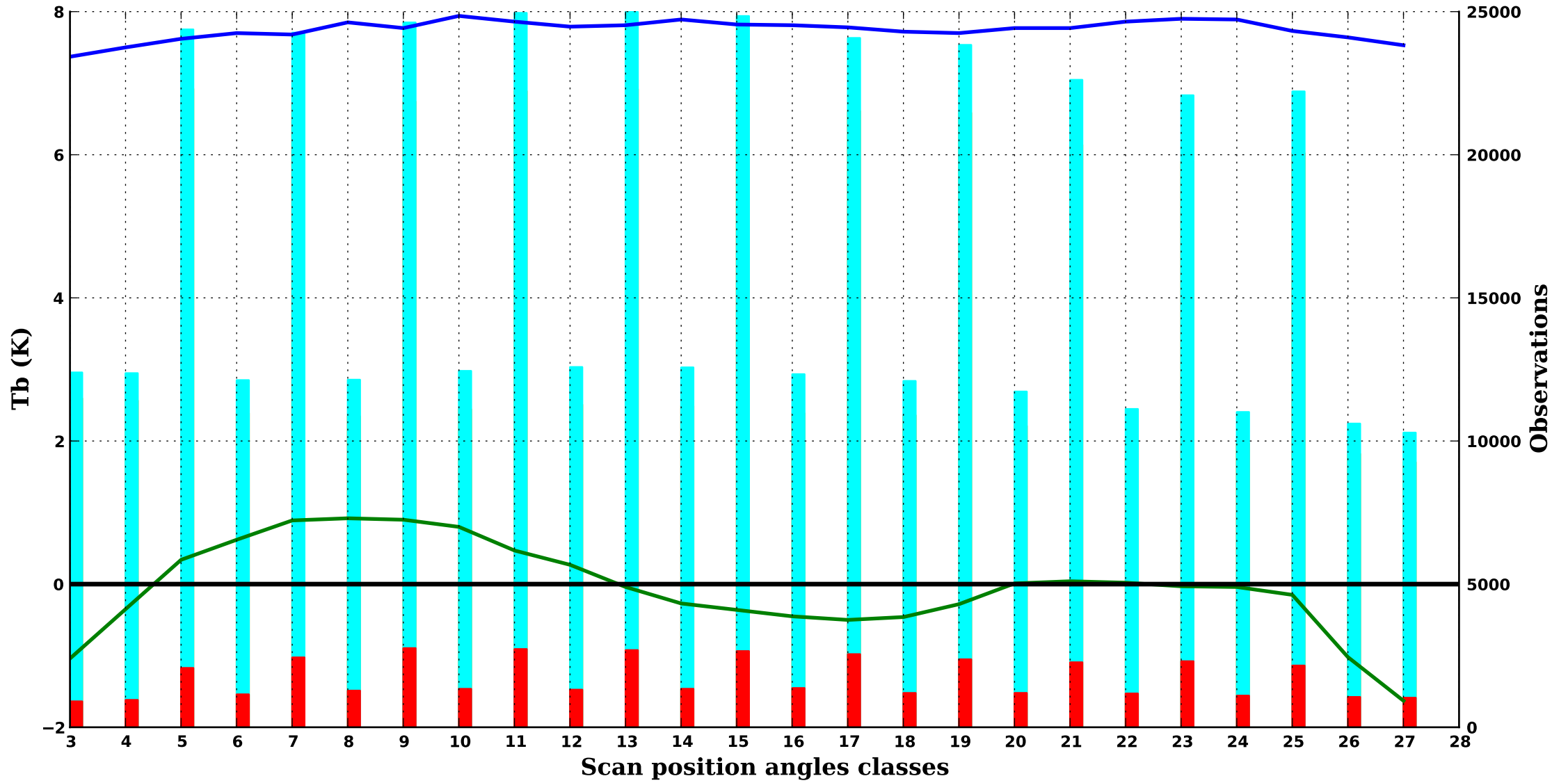
**METOP C**

*Period : 202409*

*cloudy/land*

**AMSU-B 1**

**1000 hPa**



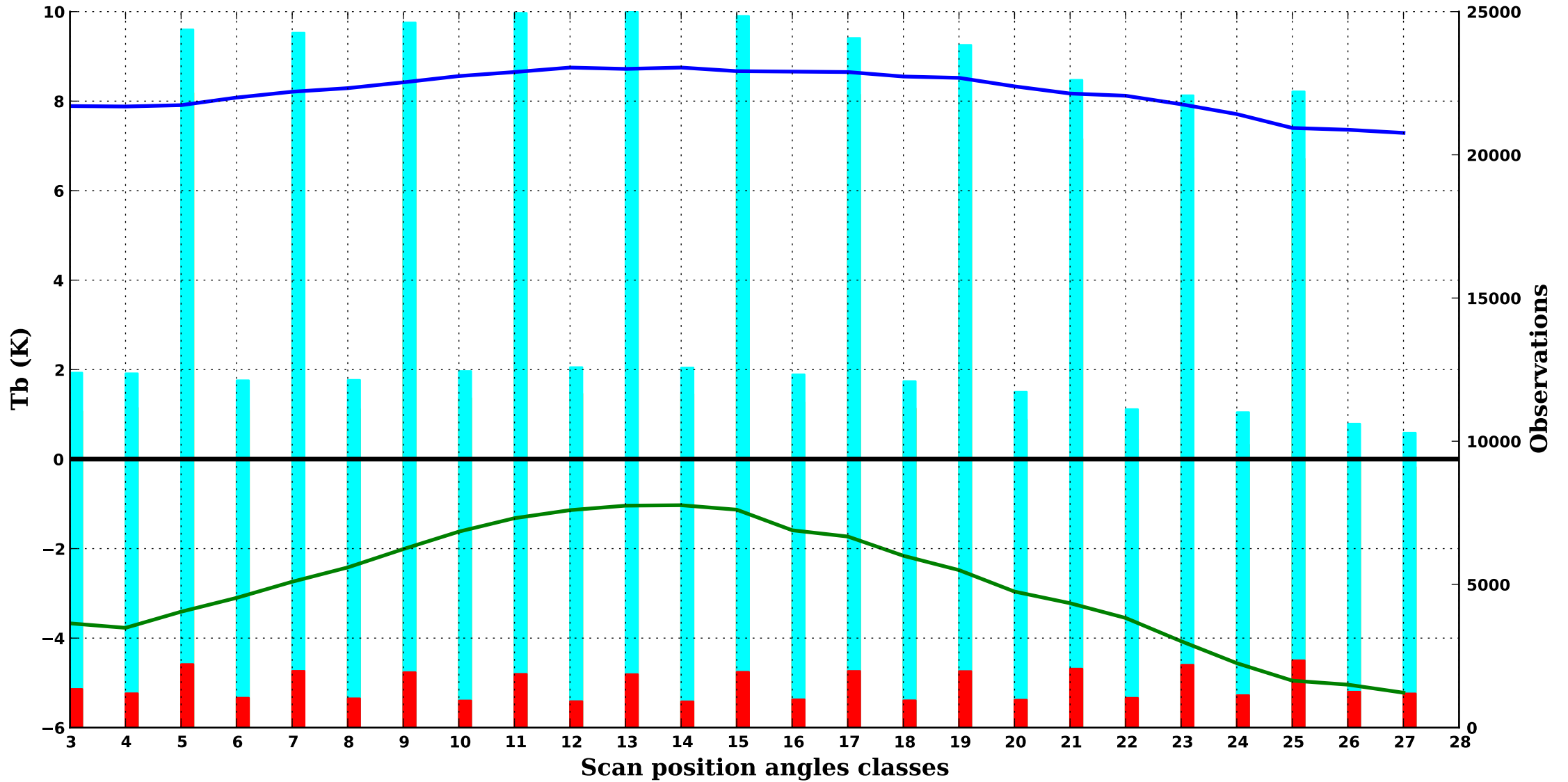
**METOP C**

*Period : 202409*

*cloudy/land*

**AMSU-B 2**

**1000 hPa**



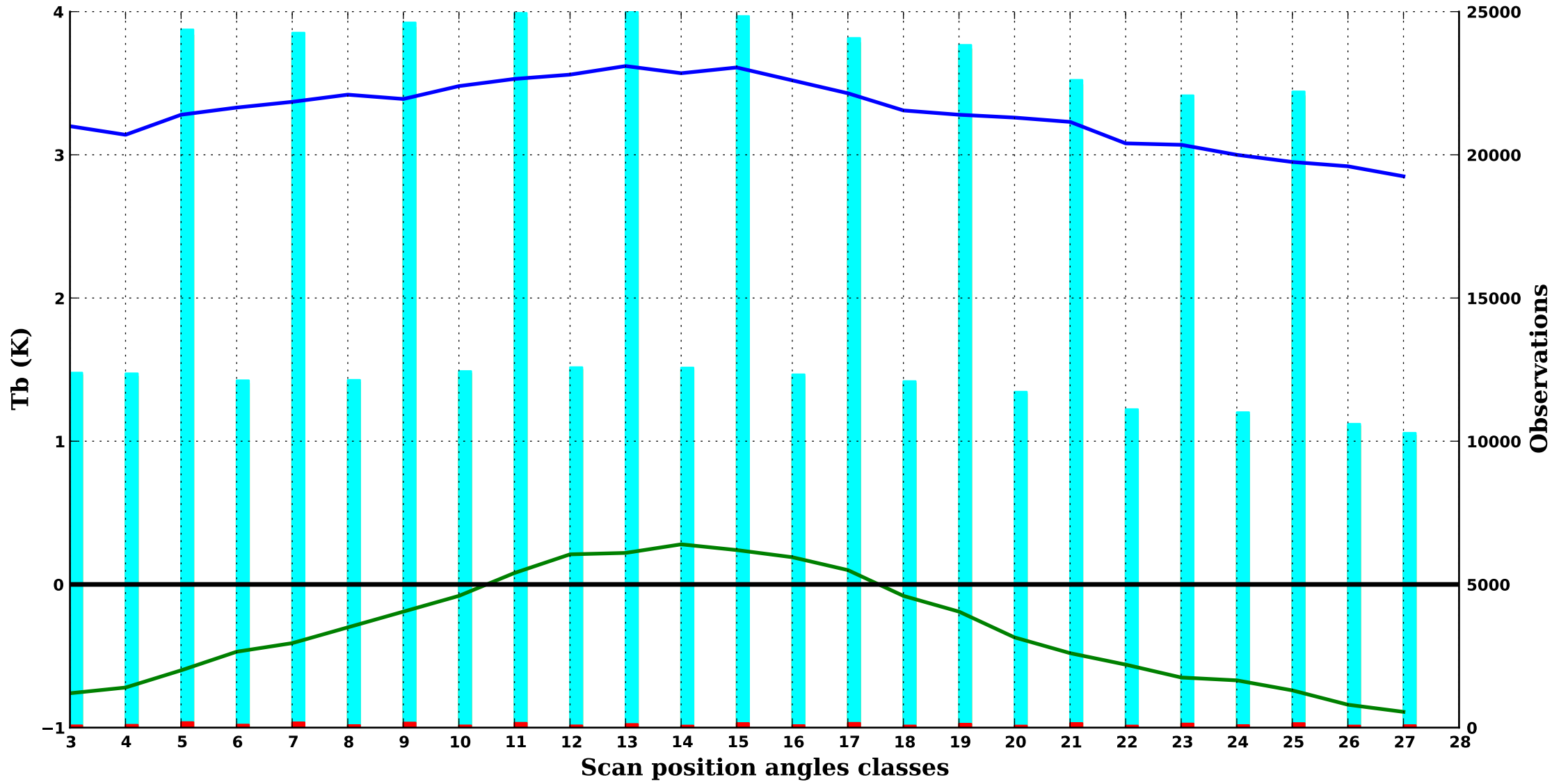
**METOP C**

*Period : 202409*

*cloudy/land*

**AMSU-B 3**

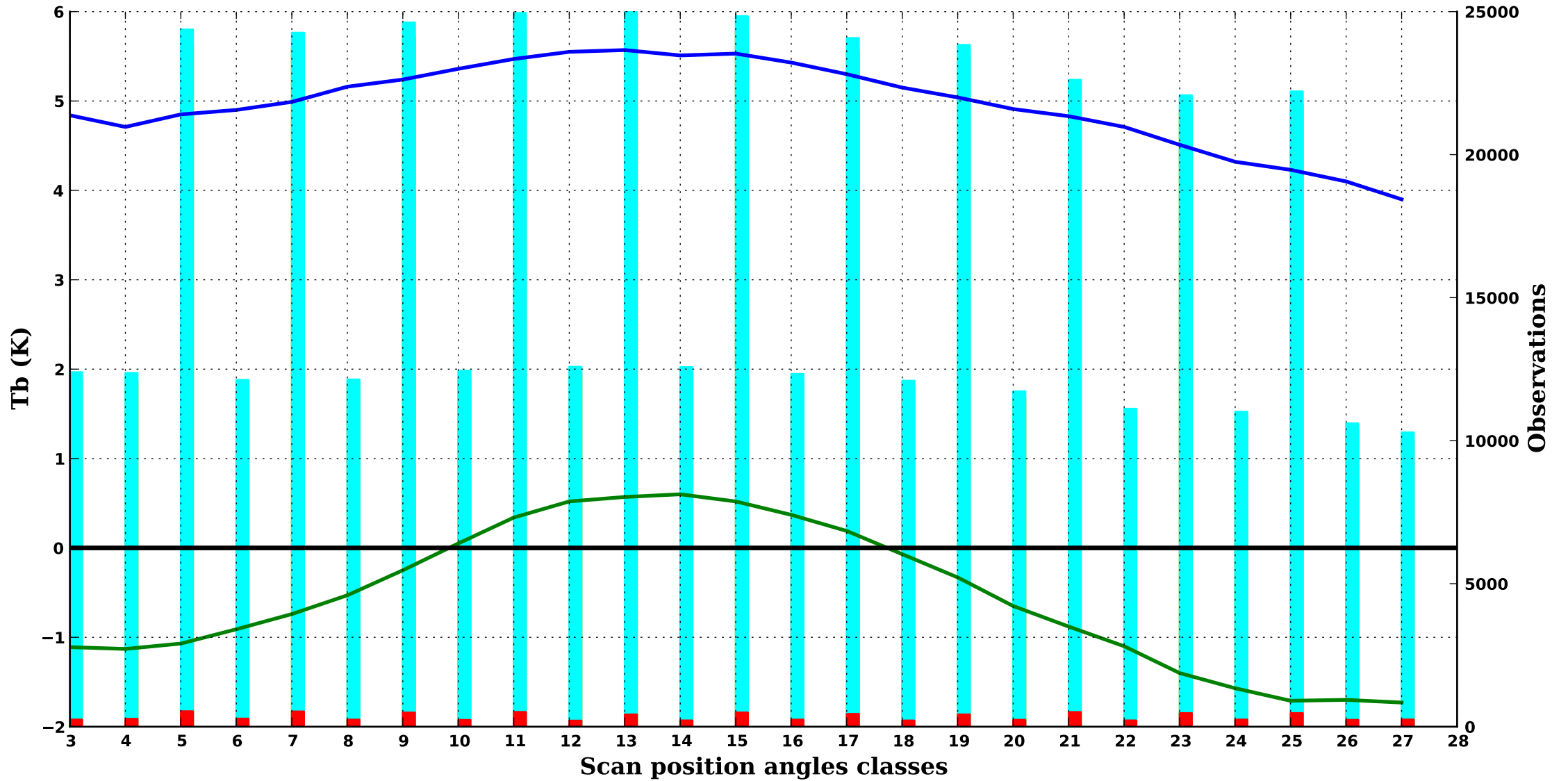
**350 hPa**



cloudy/land

AMSU-B 4

500 hPa



**METOP C**

*Period : 202409*

*cloudy/land*

**AMSU-B 5**

**700 hPa**

