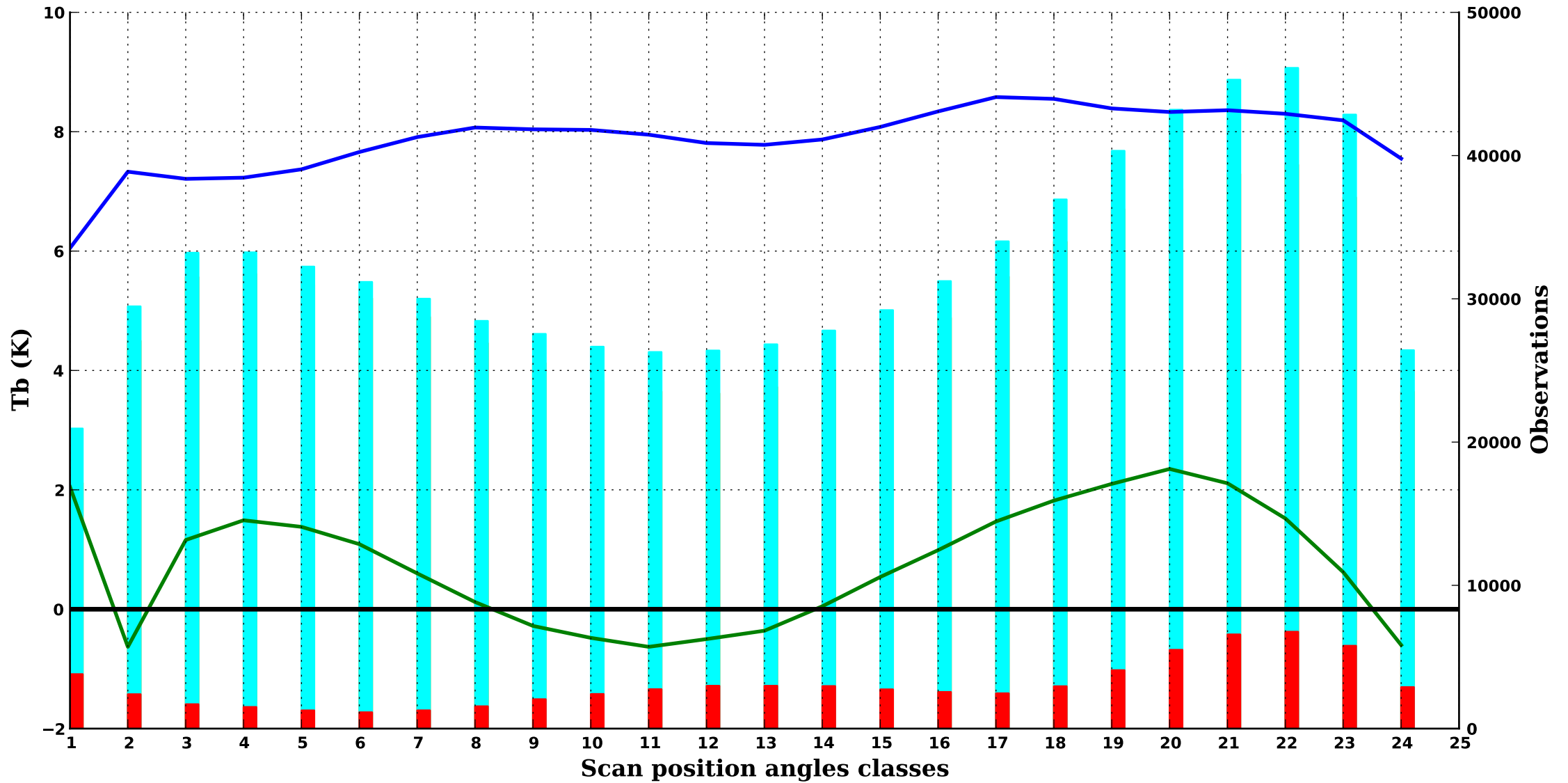


clear/sea ice

ATMS 1

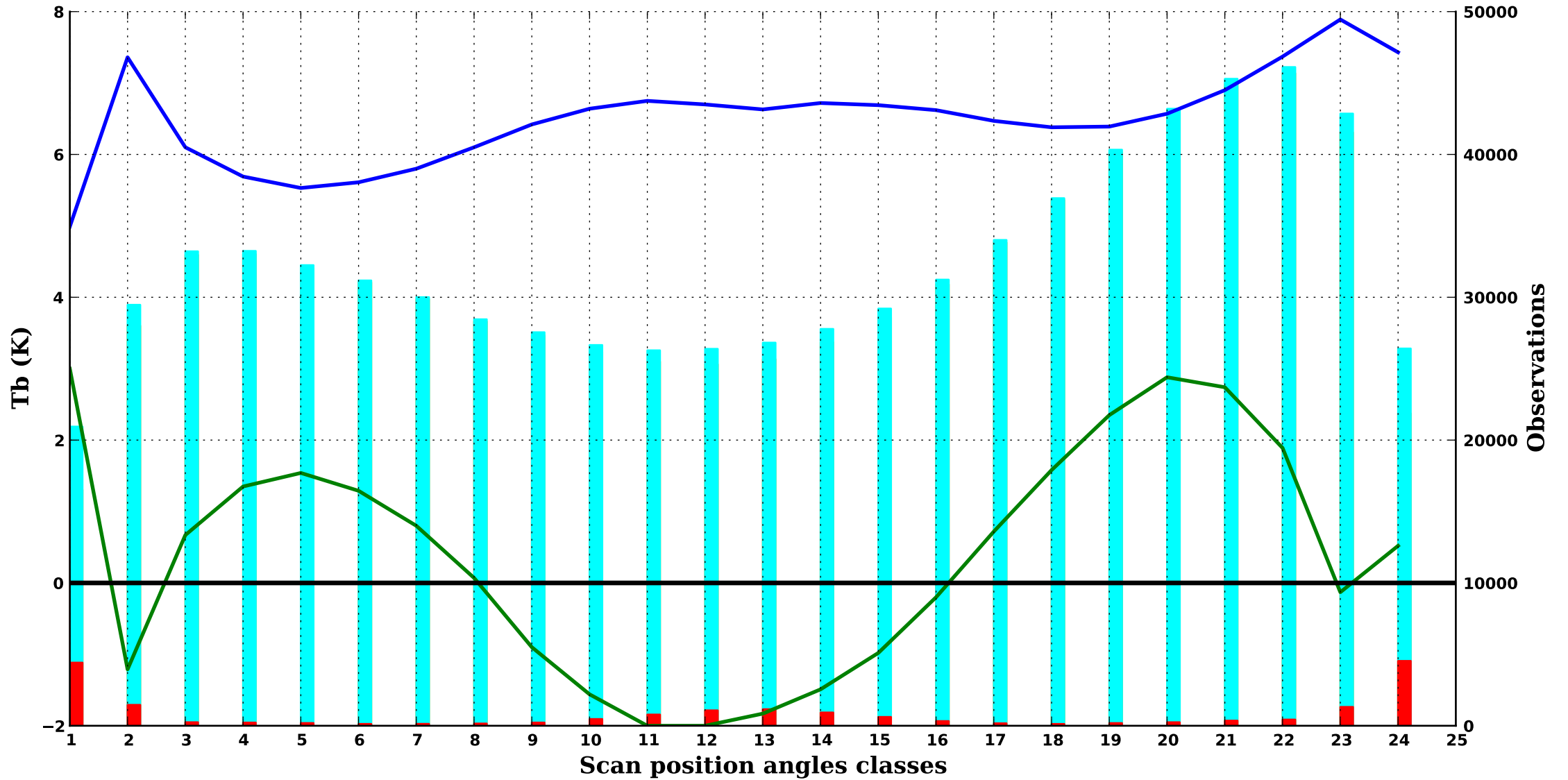
1000 hPa



clear/sea ice

ATMS 2

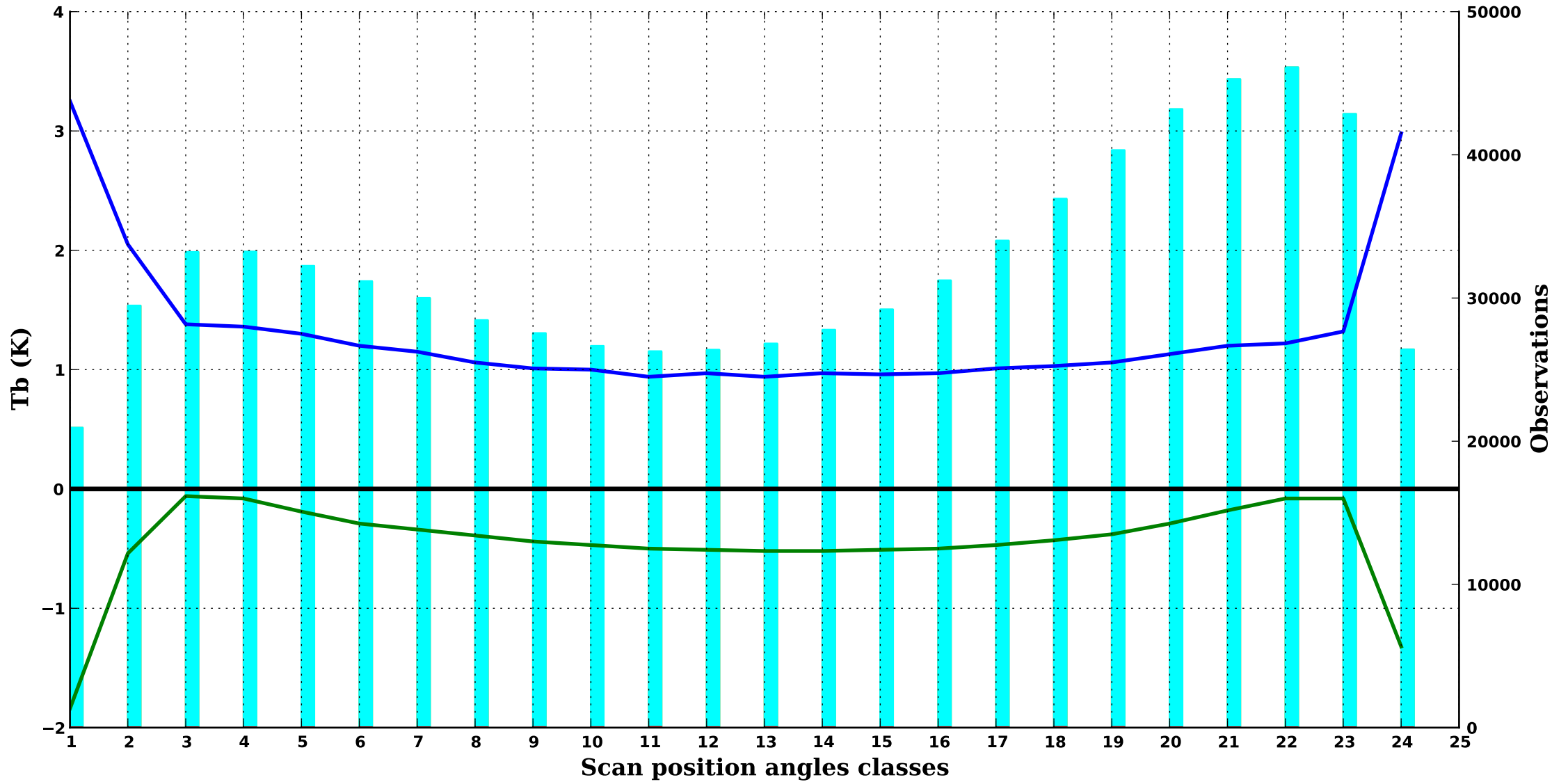
1000 hPa



clear/sea ice

ATMS 3

1000 hPa



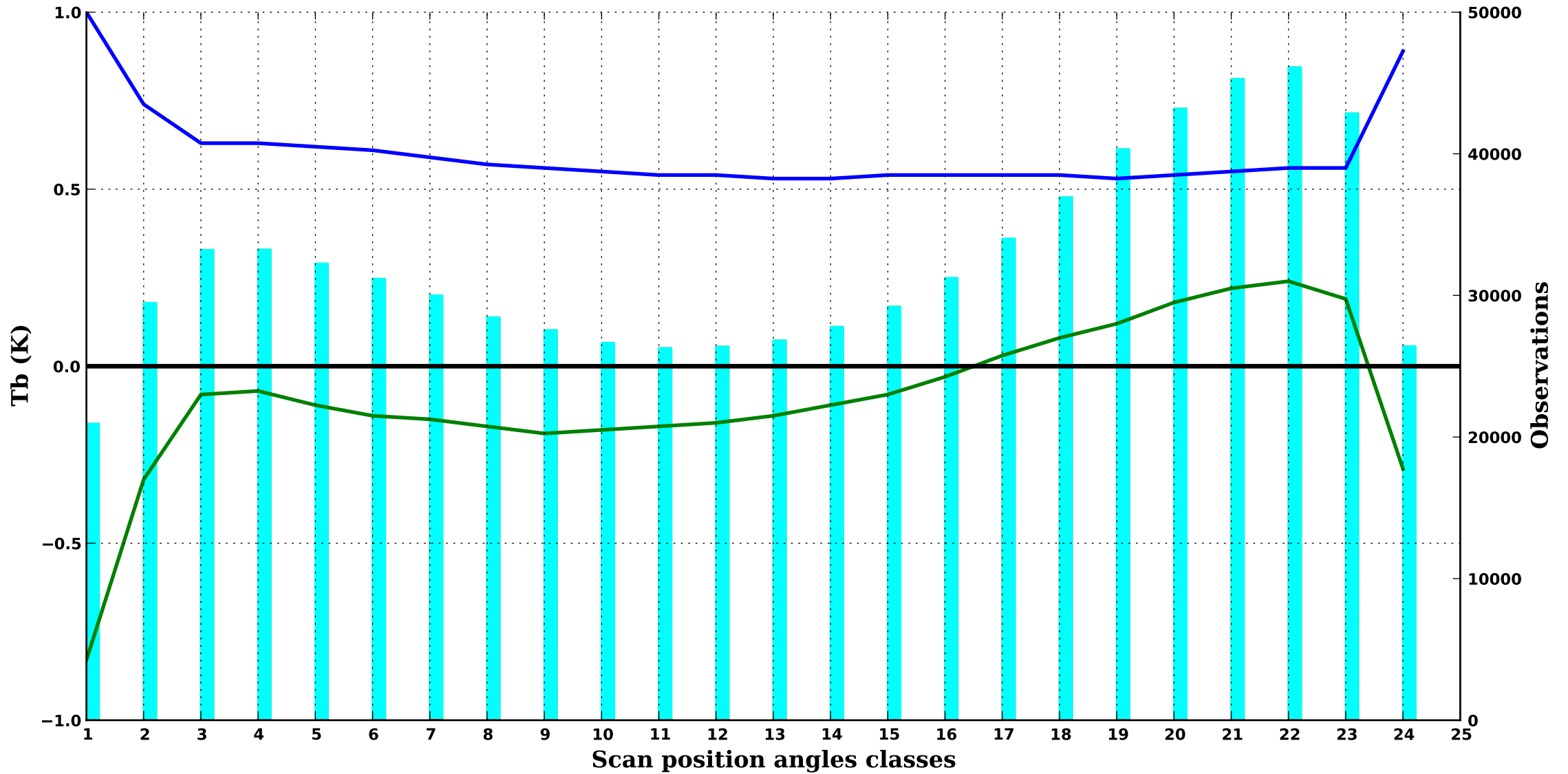
NOAA 20

Period : 202504

clear/sea ice

ATMS 4

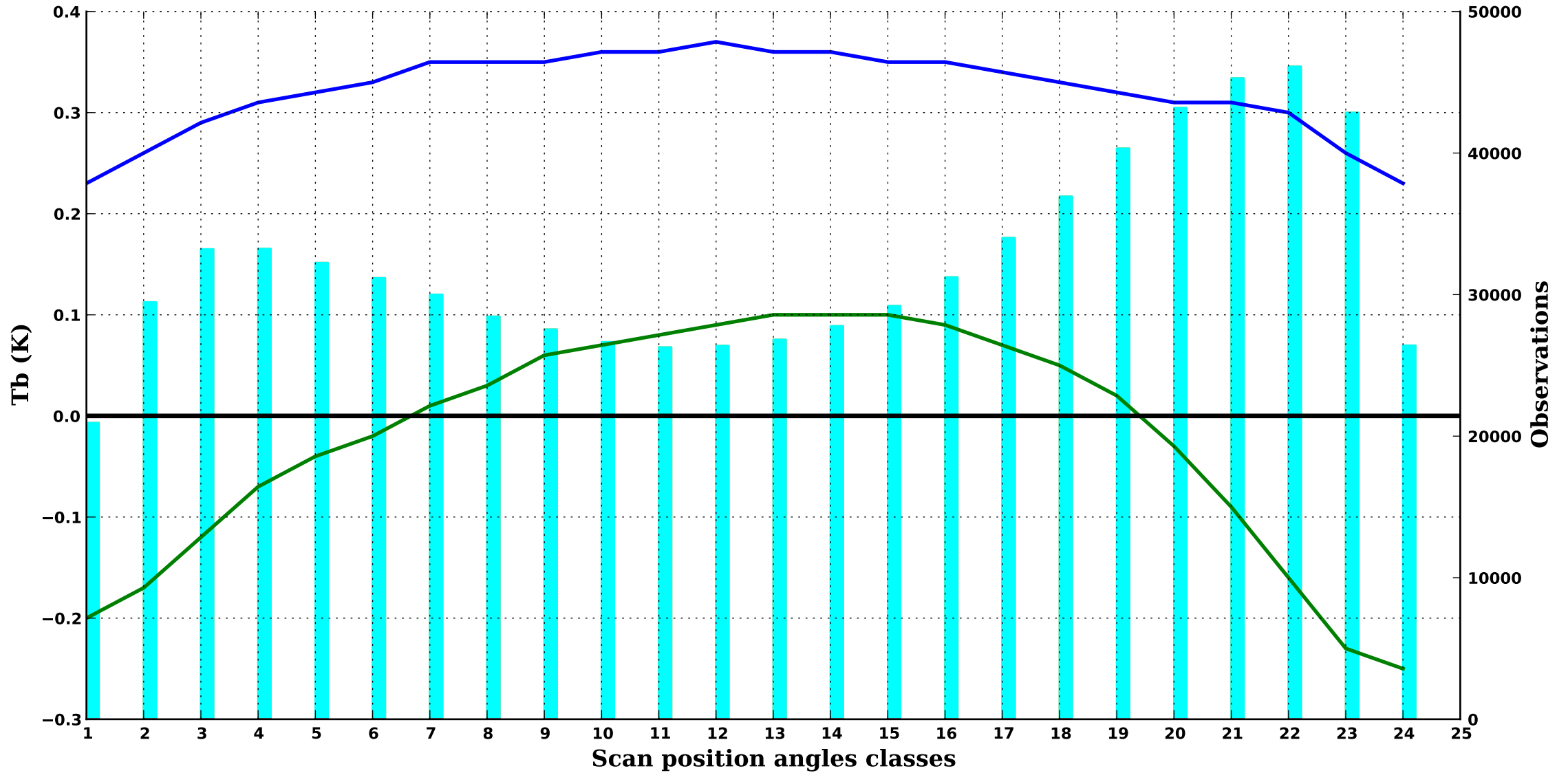
1000 hPa



clear/sea ice

ATMS 5

900 hPa



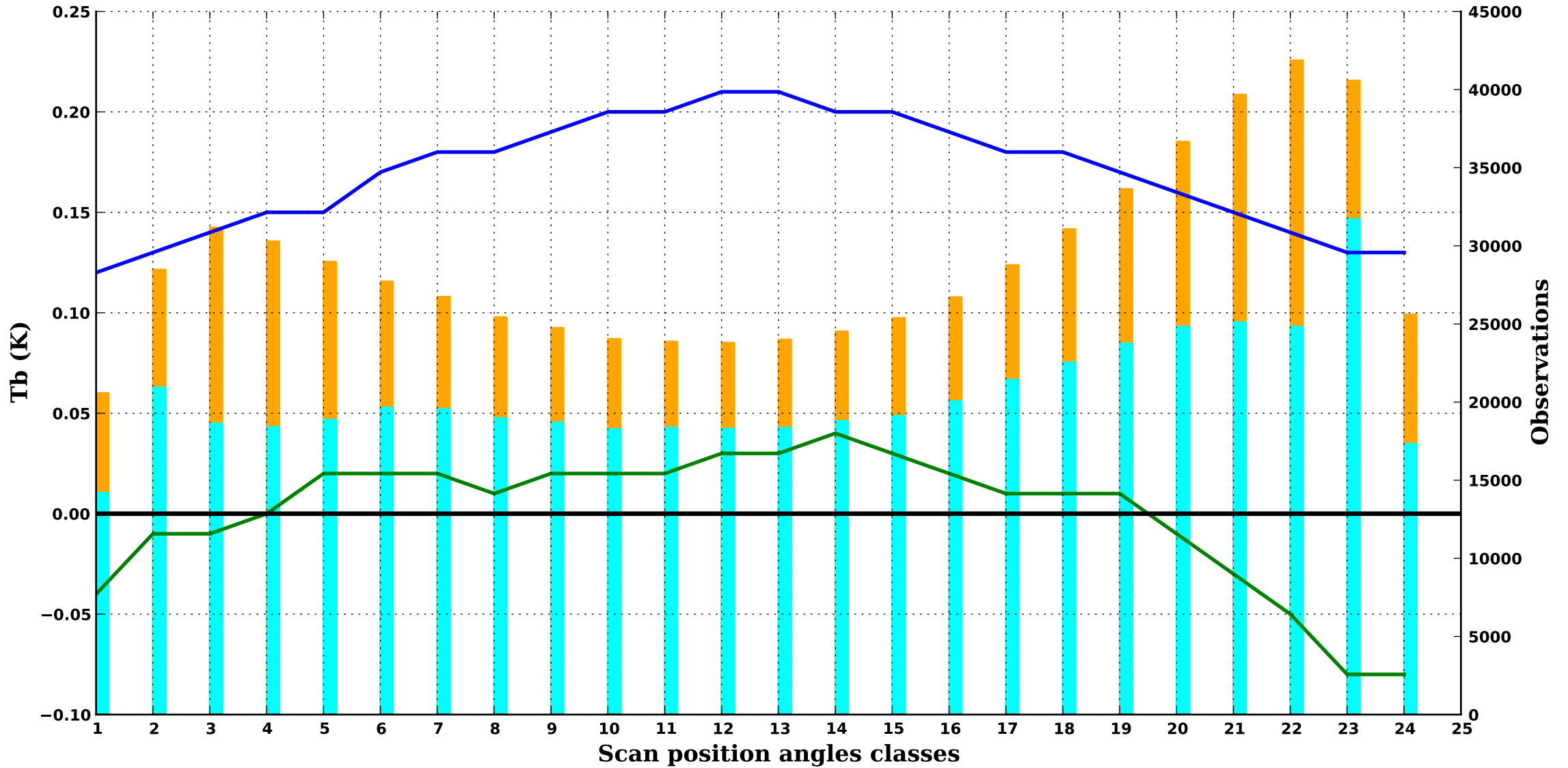
NOAA 20

Period : 202504

clear/sea ice

ATMS 6

650 hPa



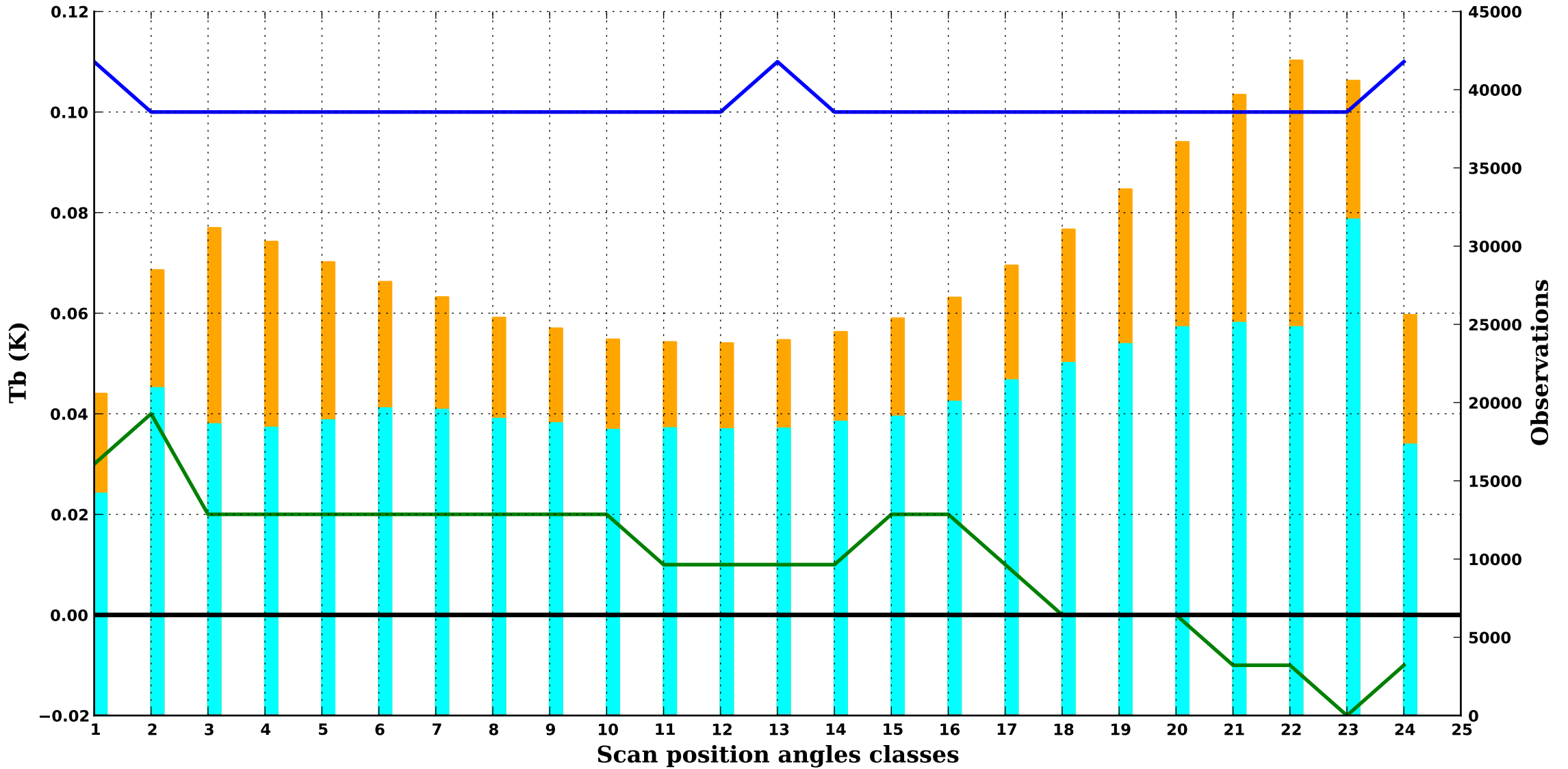
NOAA 20

Period : 202504

clear/sea ice

ATMS 7

400 hPa



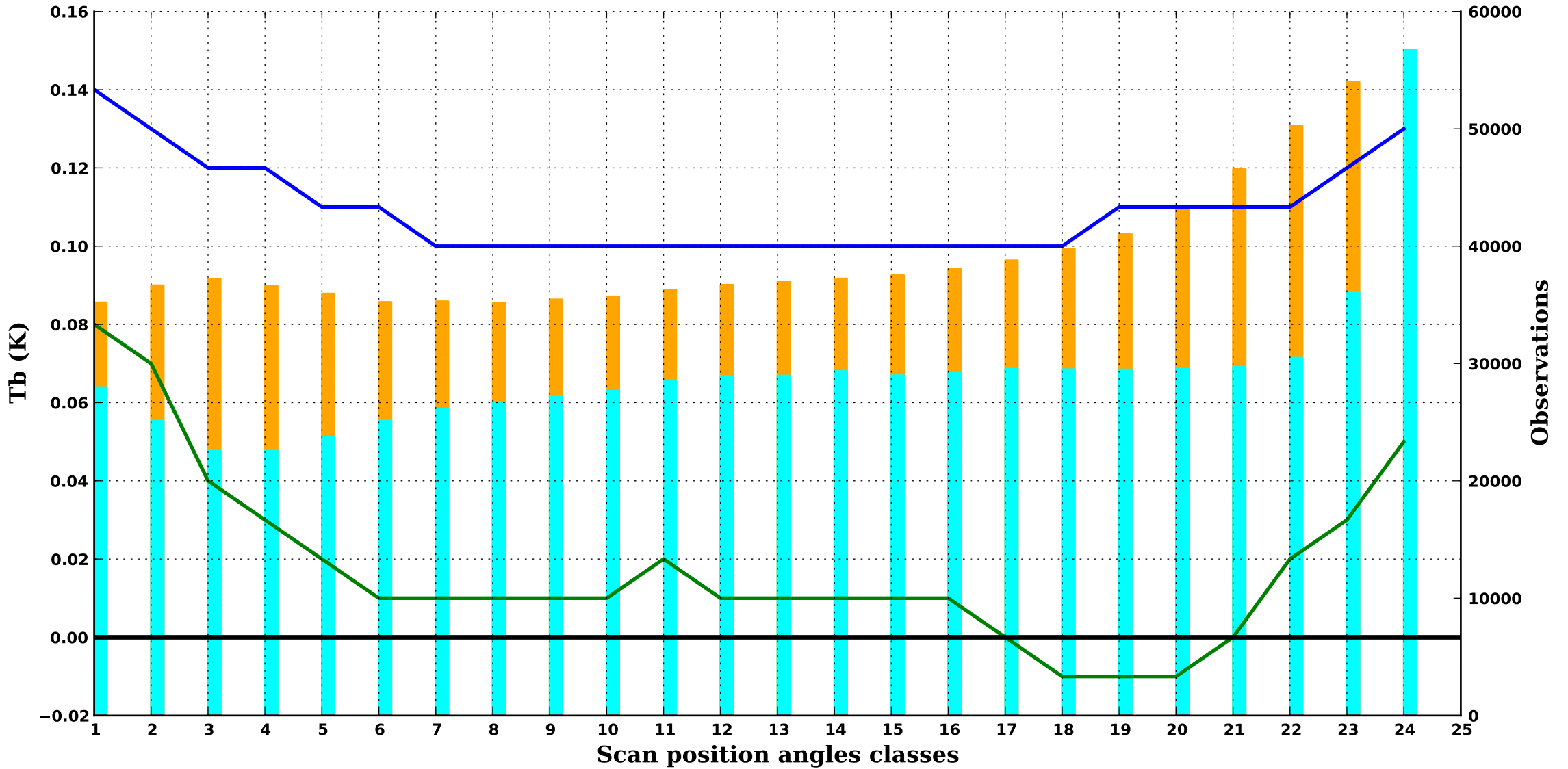
NOAA 20

Period : 202504

clear/sea ice

ATMS 8

290 hPa





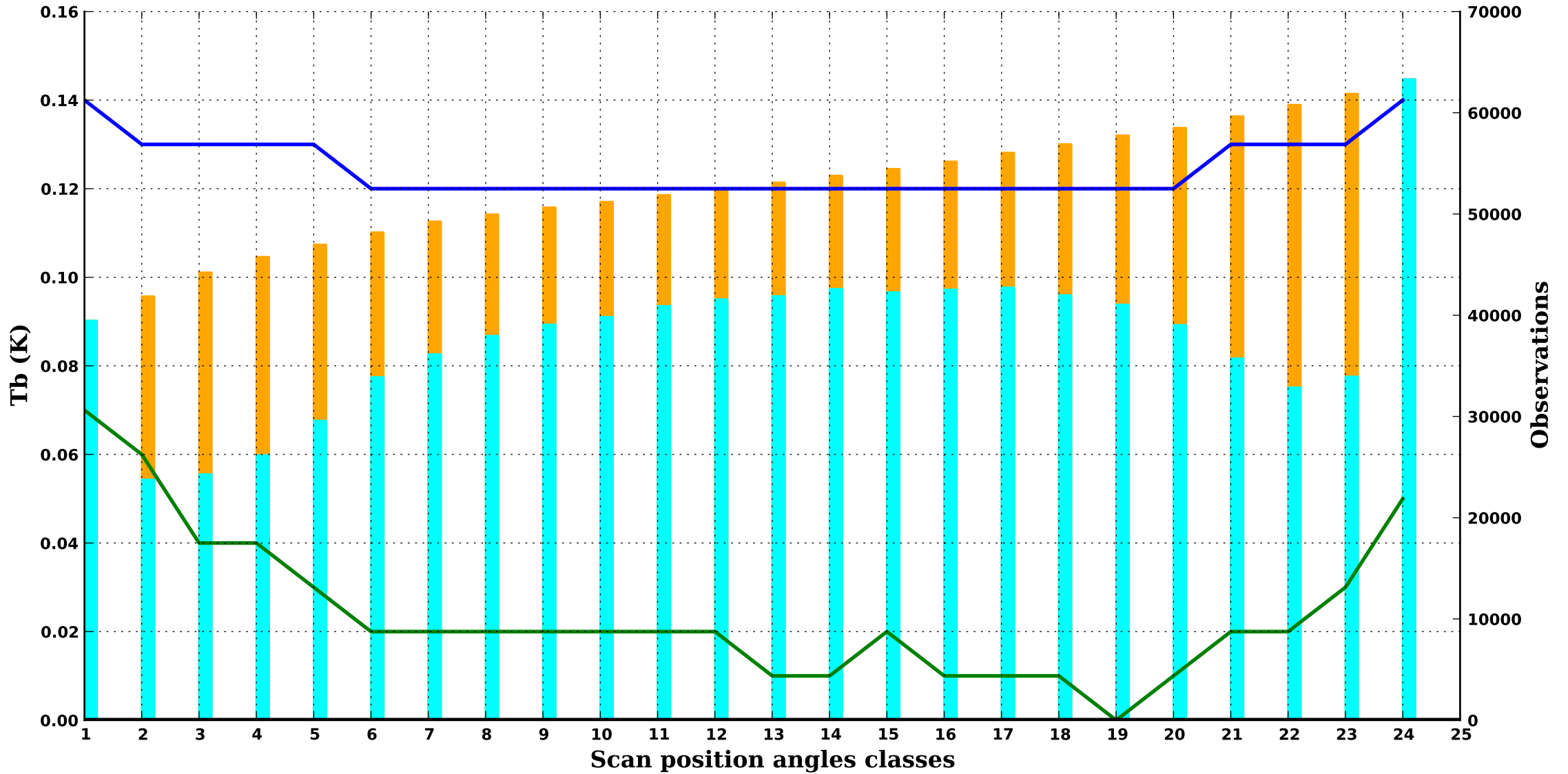
NOAA 20

Period : 202504

clear/sea ice

ATMS 9

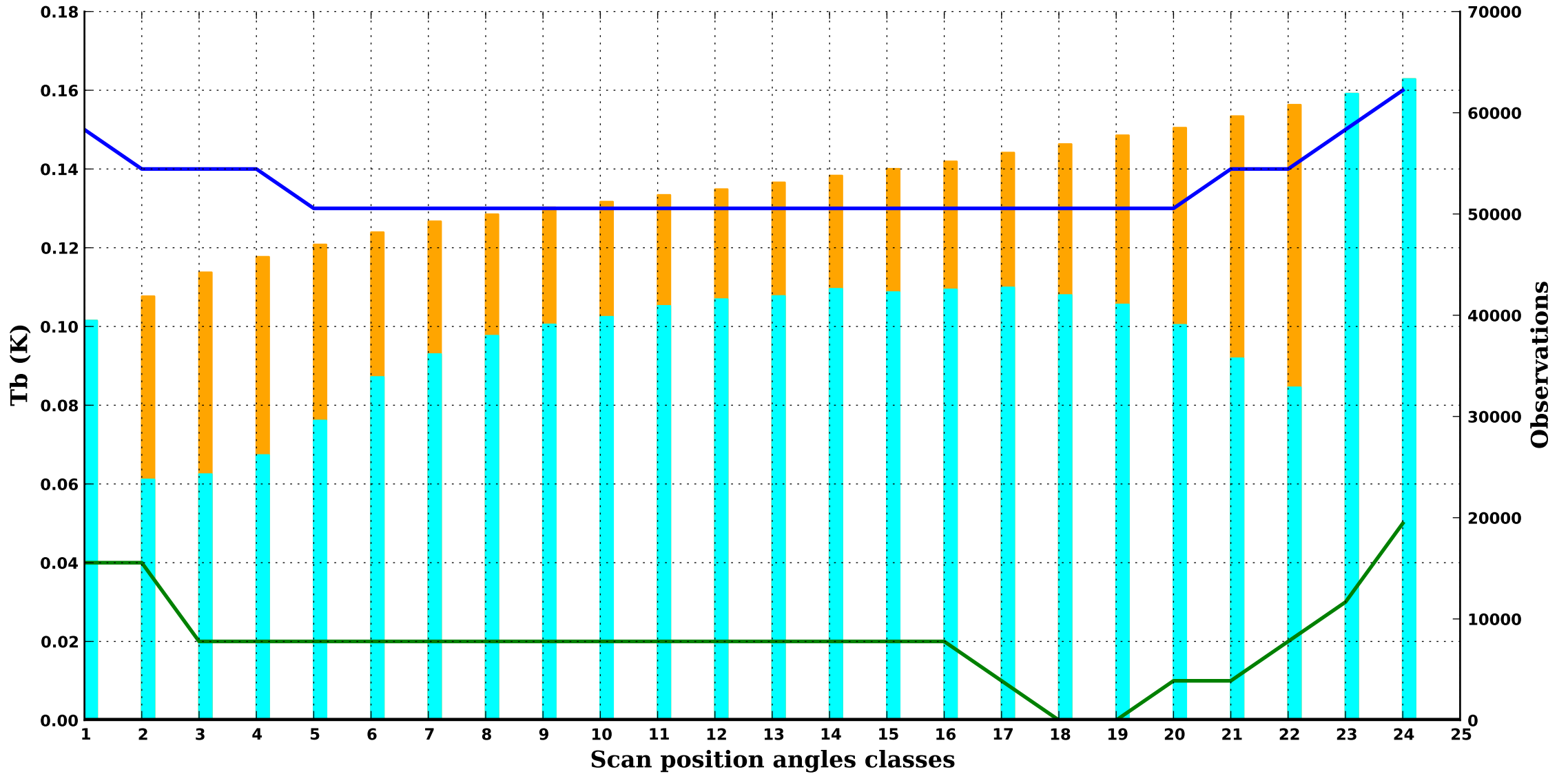
190 hPa



clear/sea ice

ATMS 10

90 hPa



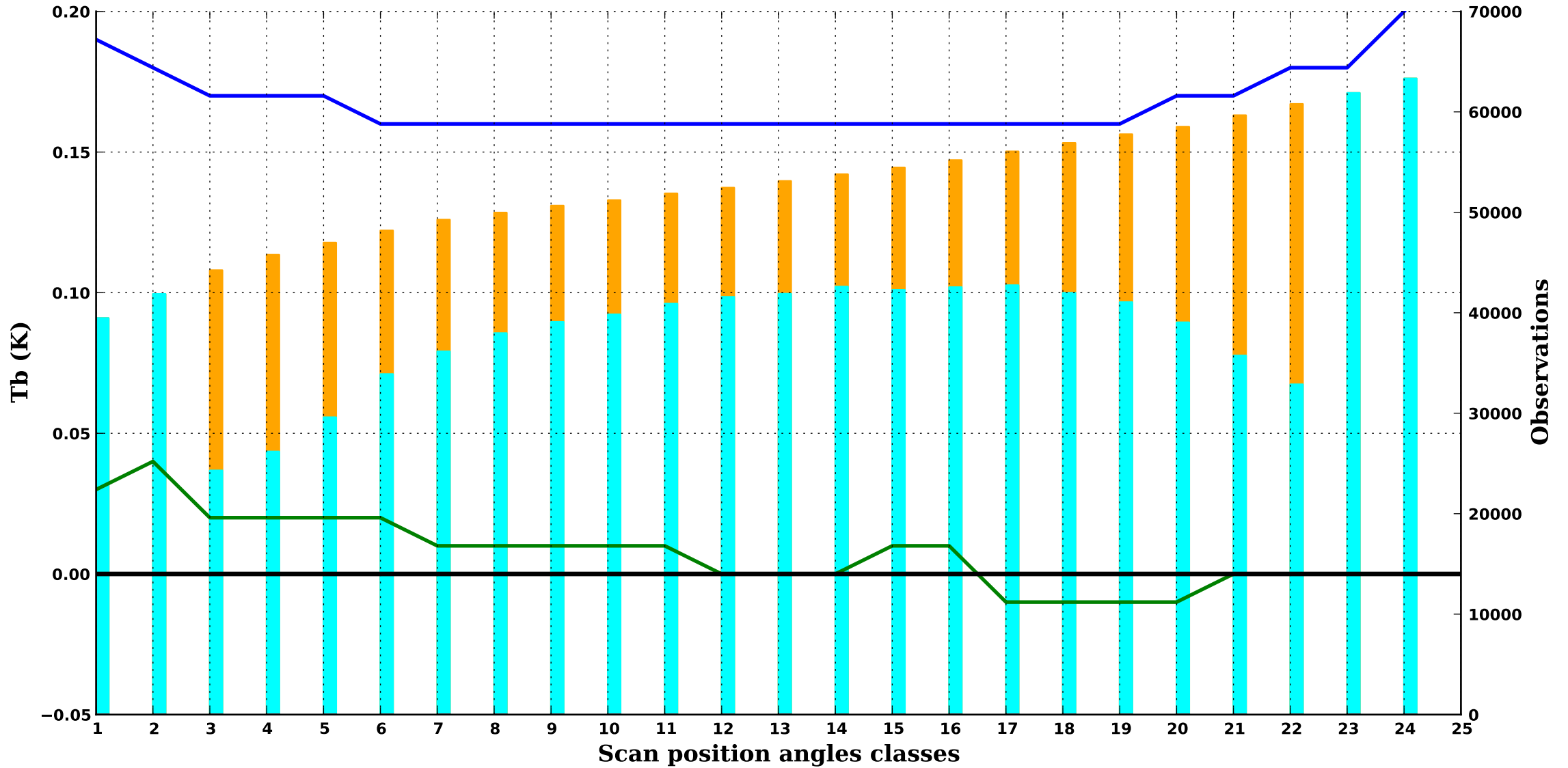
NOAA 20

Period : 202504

clear/sea ice

ATMS 11

50 hPa



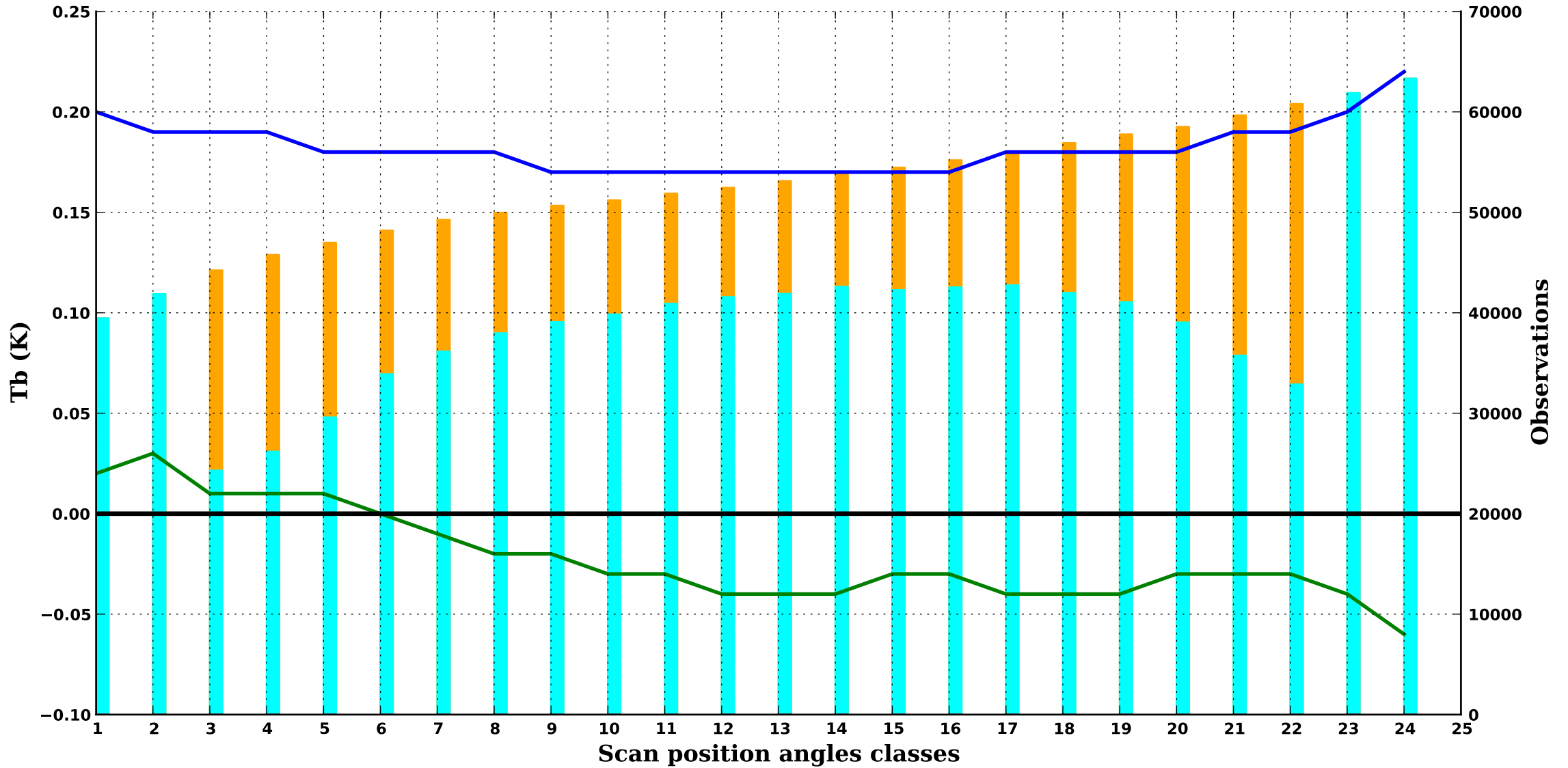
NOAA 20

Period : 202504

clear/sea ice

ATMS 12

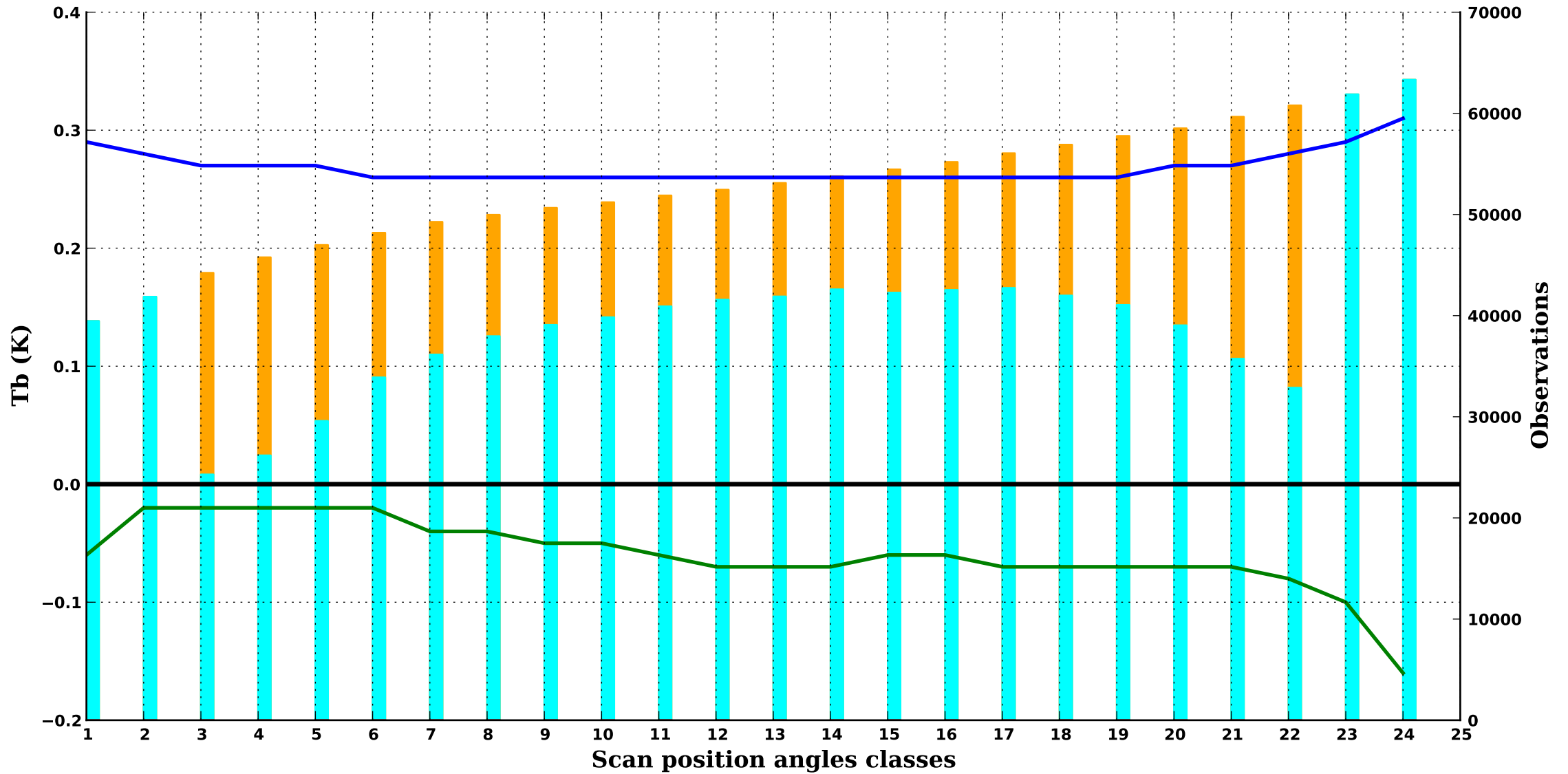
25 hPa



clear/sea ice

ATMS 13

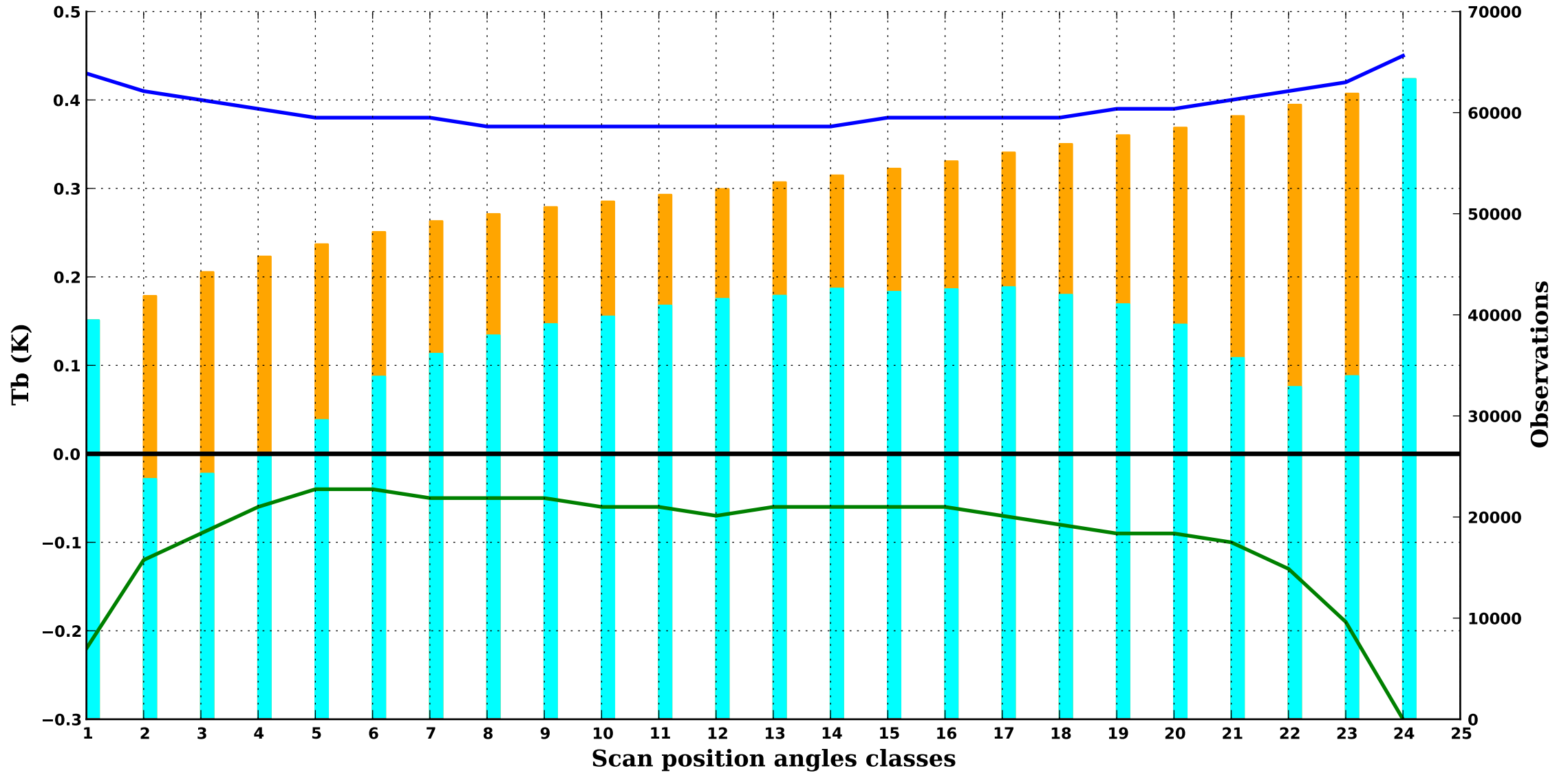
15 hPa



clear/sea ice

ATMS 14

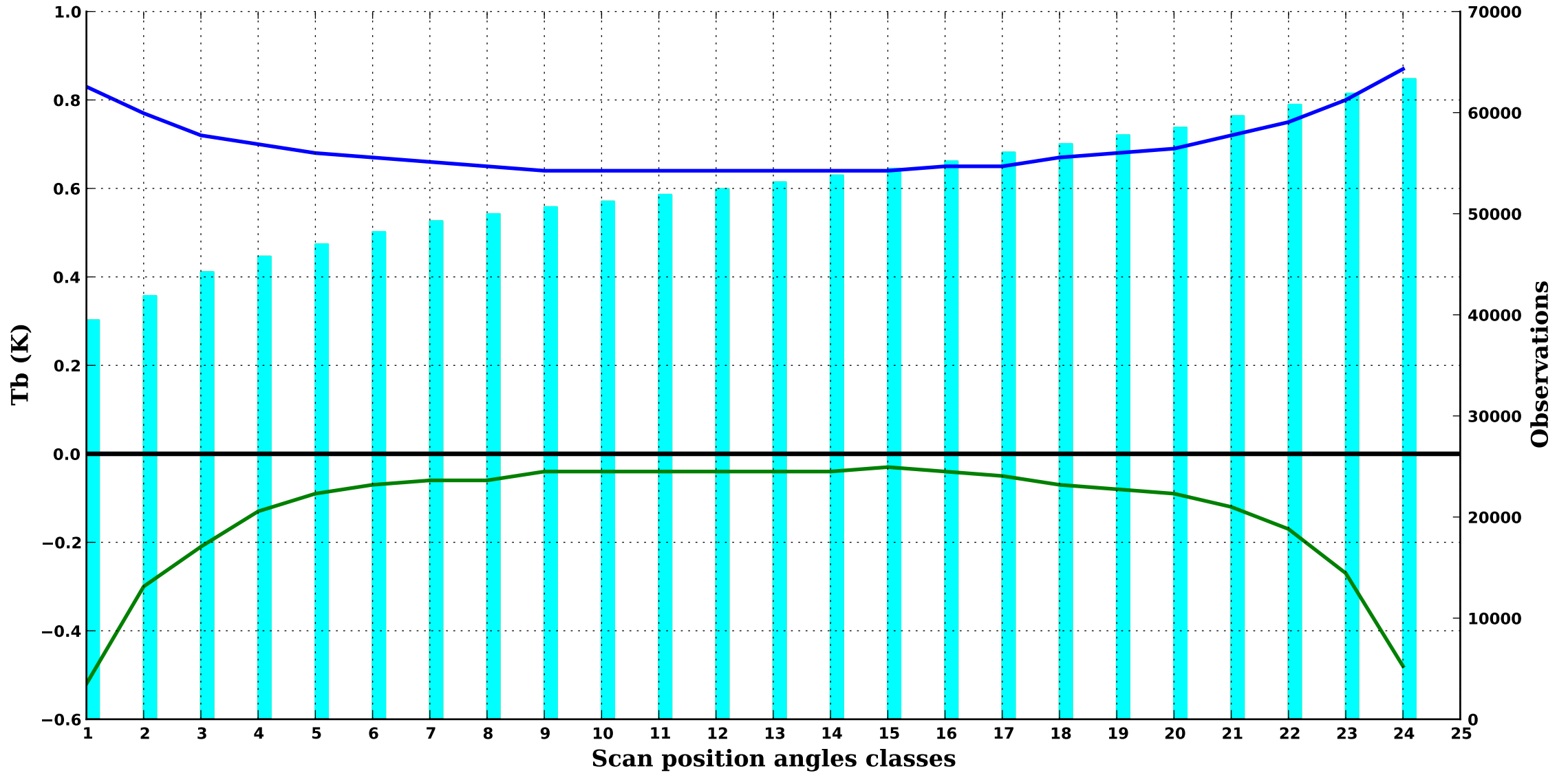
6 hPa



clear/sea ice

ATMS 15

2.5 hPa



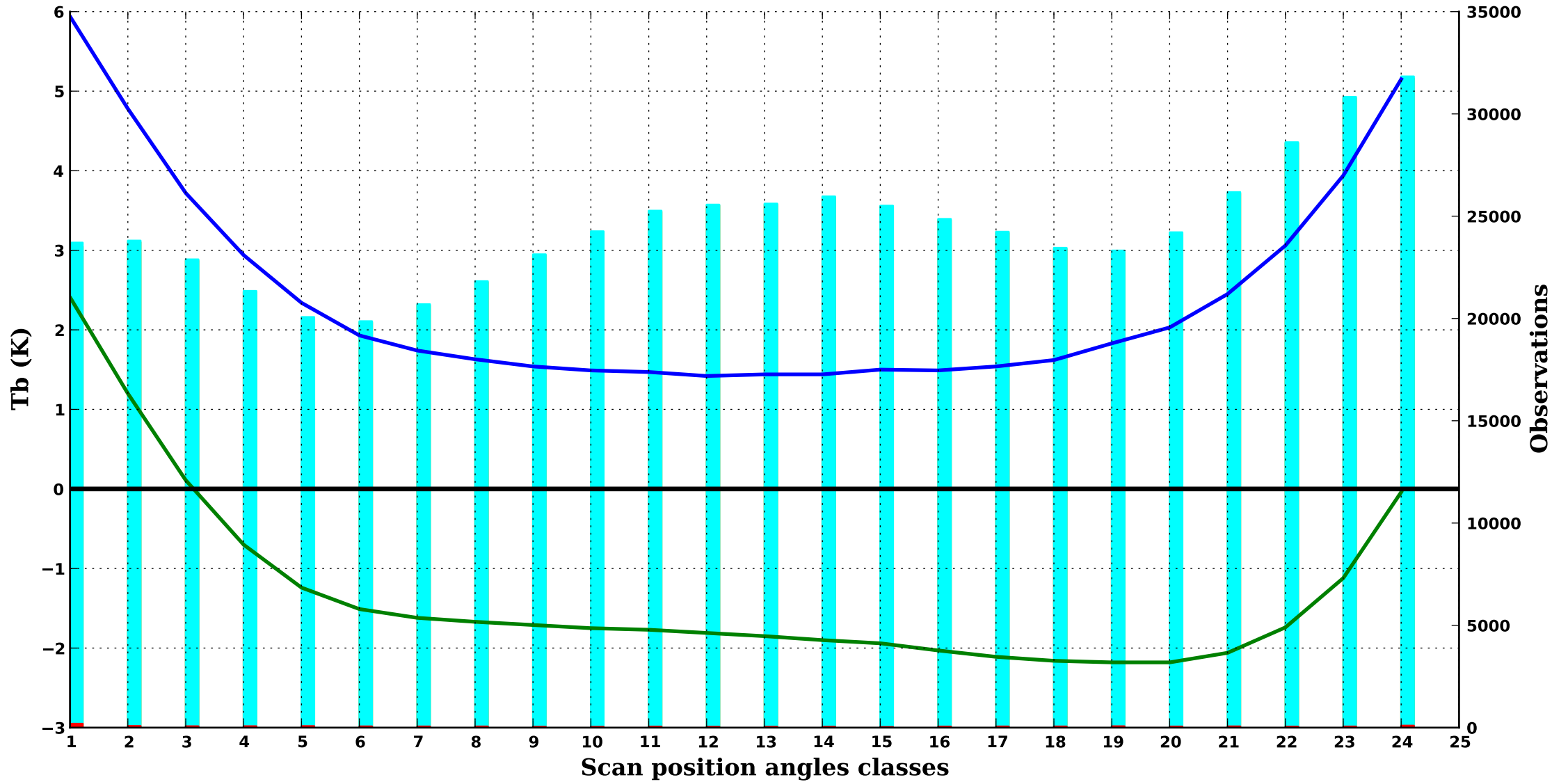
NOAA 20

Period : 202504

clear/sea ice

ATMS 16

1000 hPa





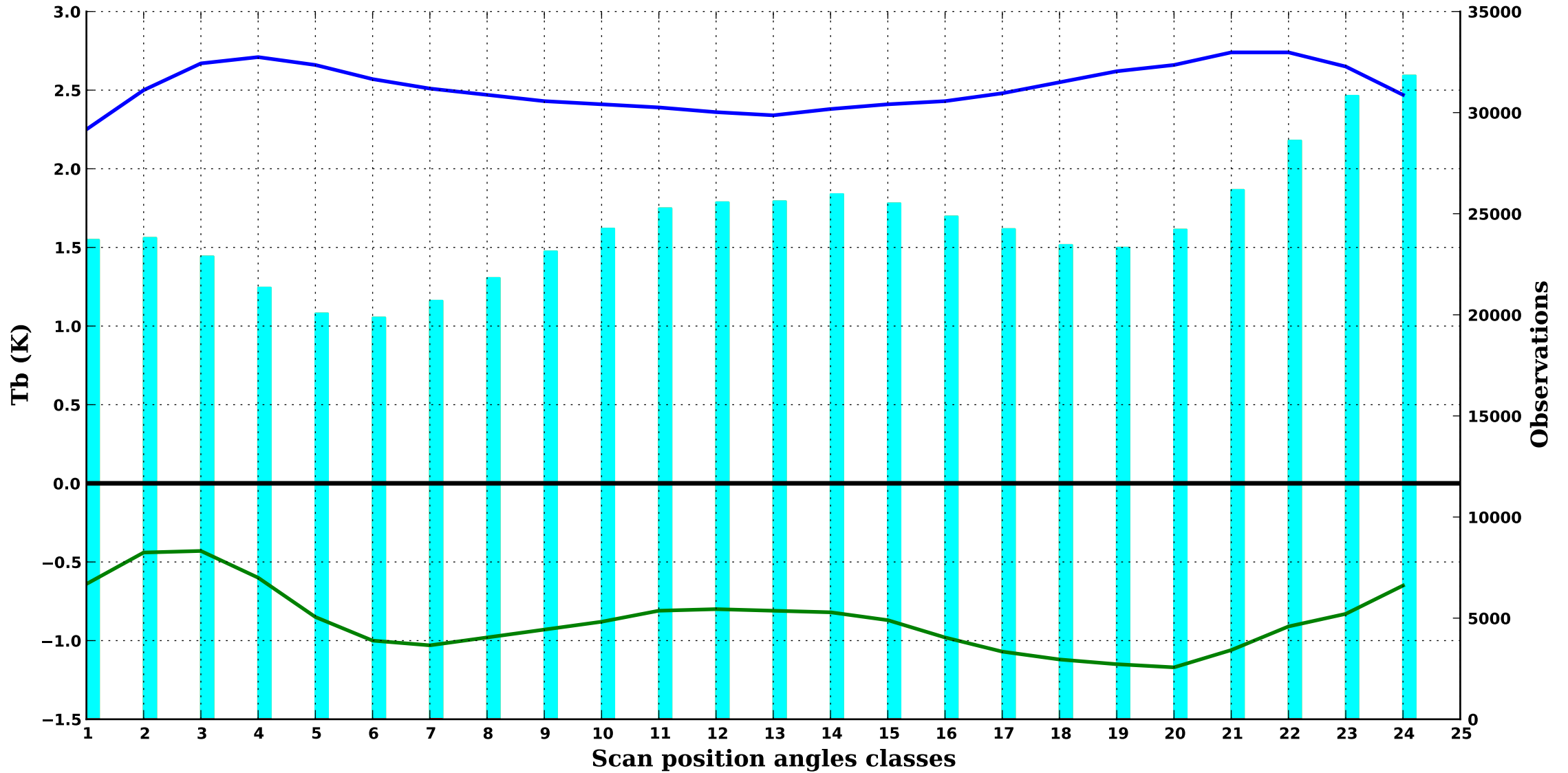
NOAA 20

Period : 202504

clear/sea ice

ATMS 17

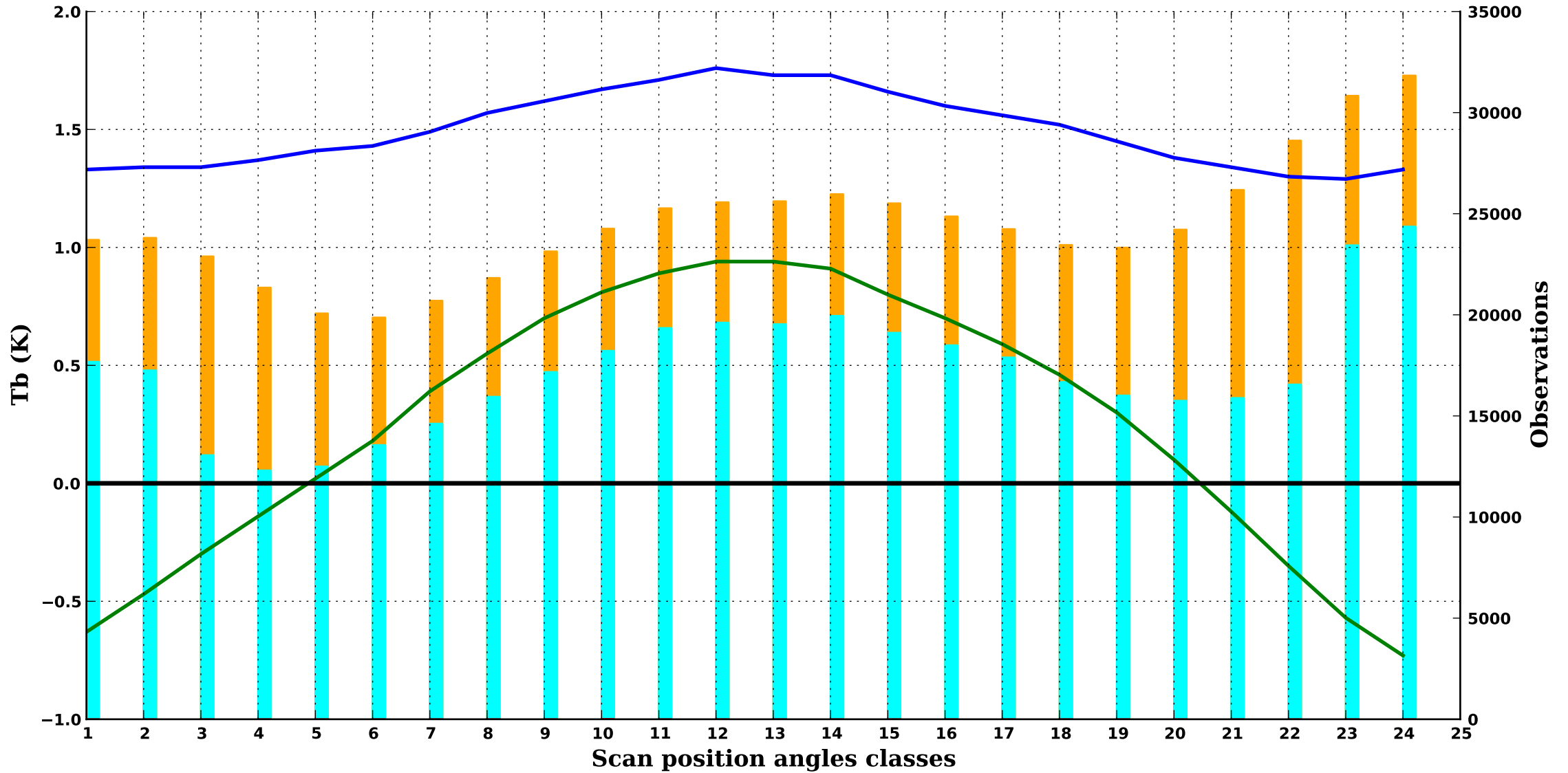
850 hPa



clear/sea ice

ATMS 18

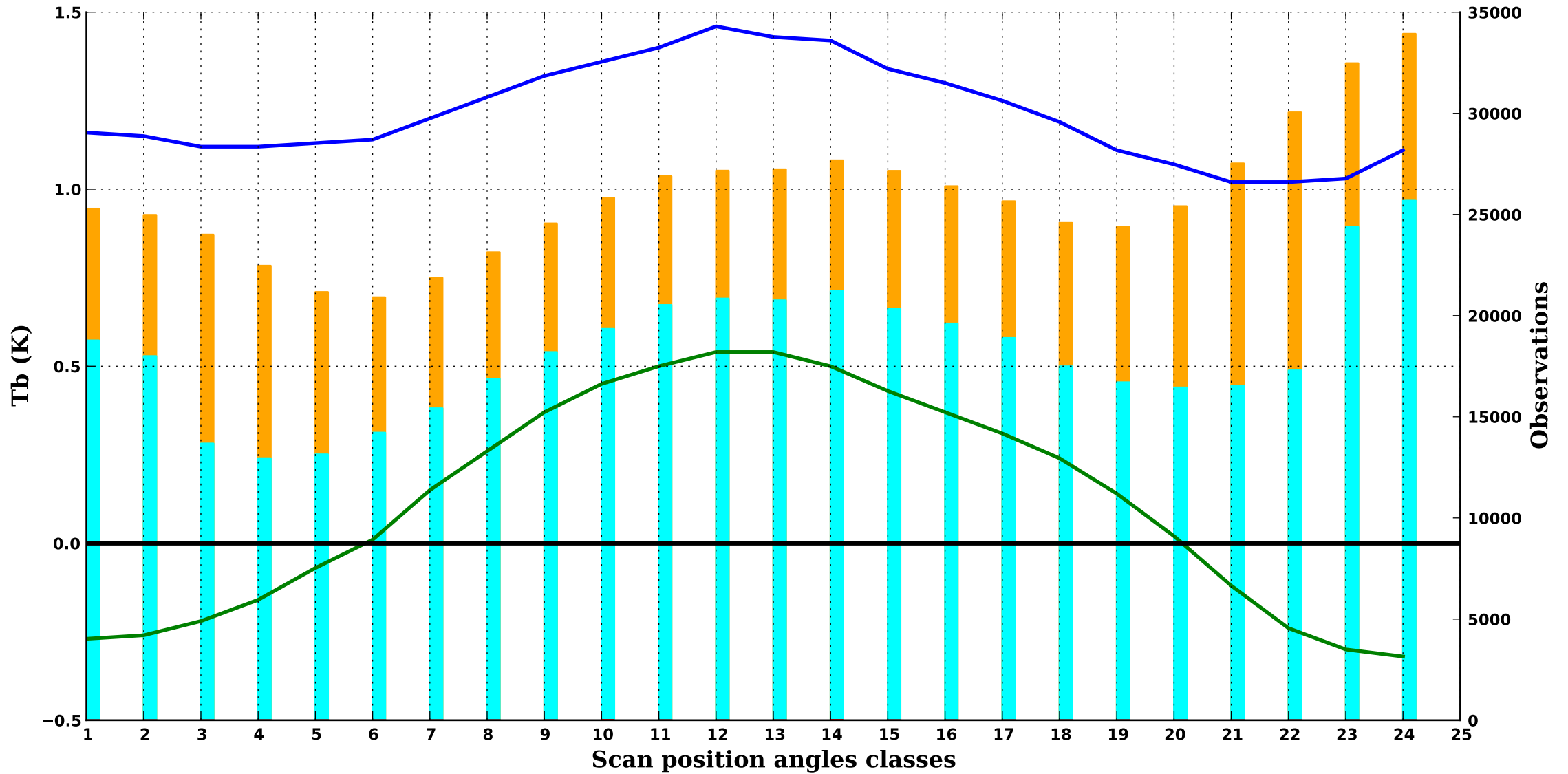
700 hPa



clear/sea ice

ATMS 19

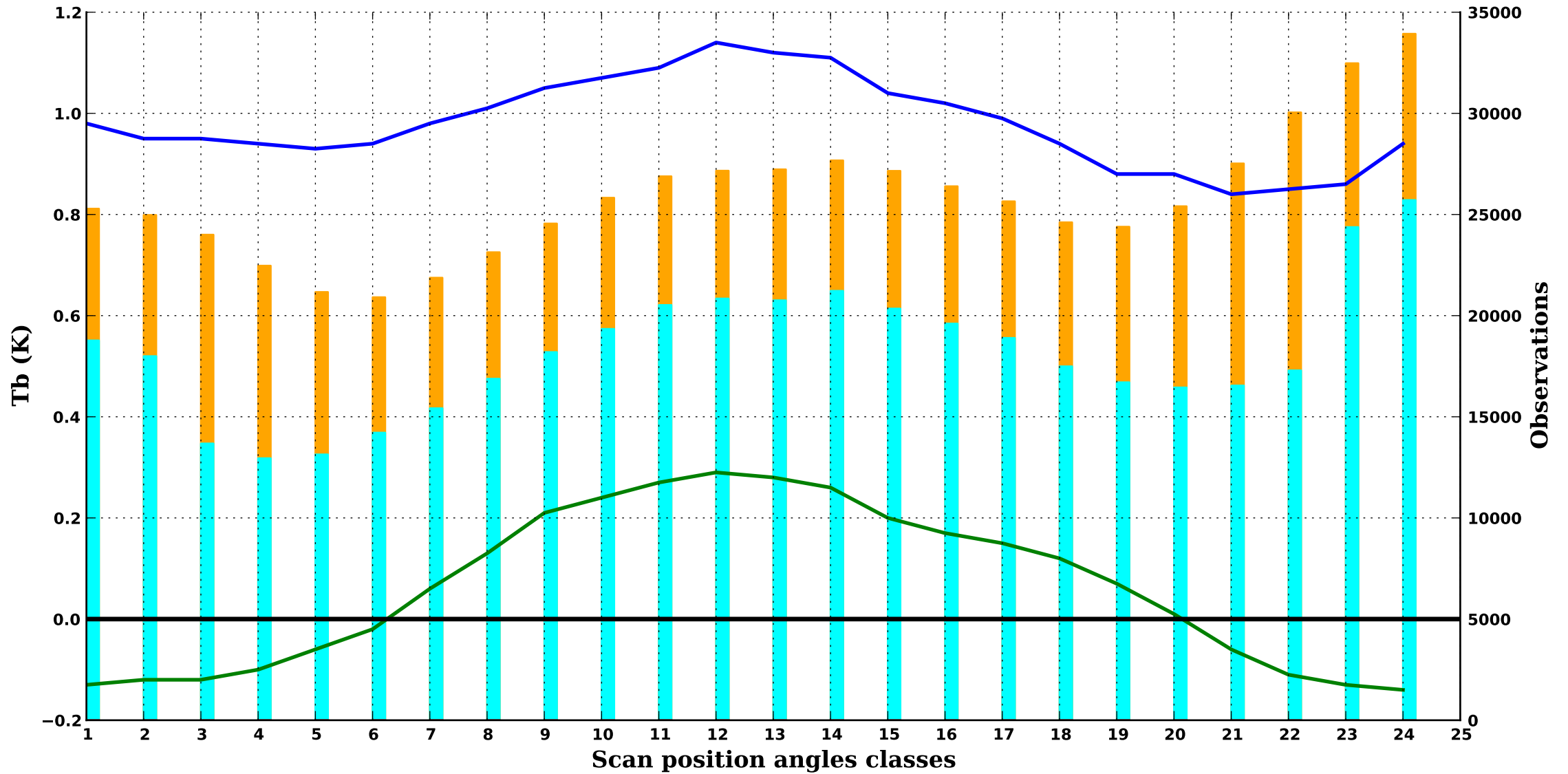
550 hPa



clear/sea ice

ATMS 20

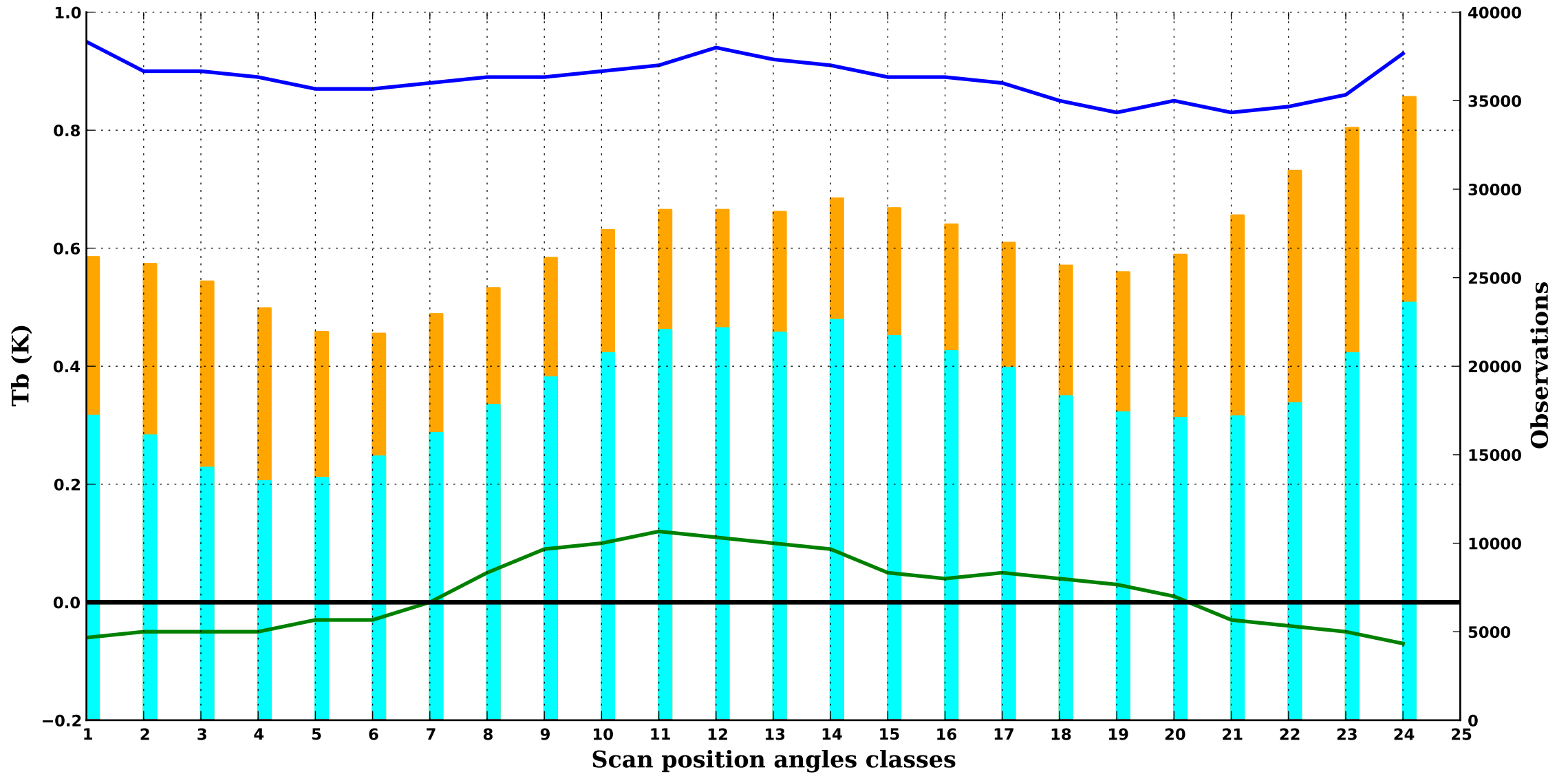
500 hPa



clear/sea ice

ATMS 21

400 hPa



clear/sea ice

ATMS 22

350 hPa

