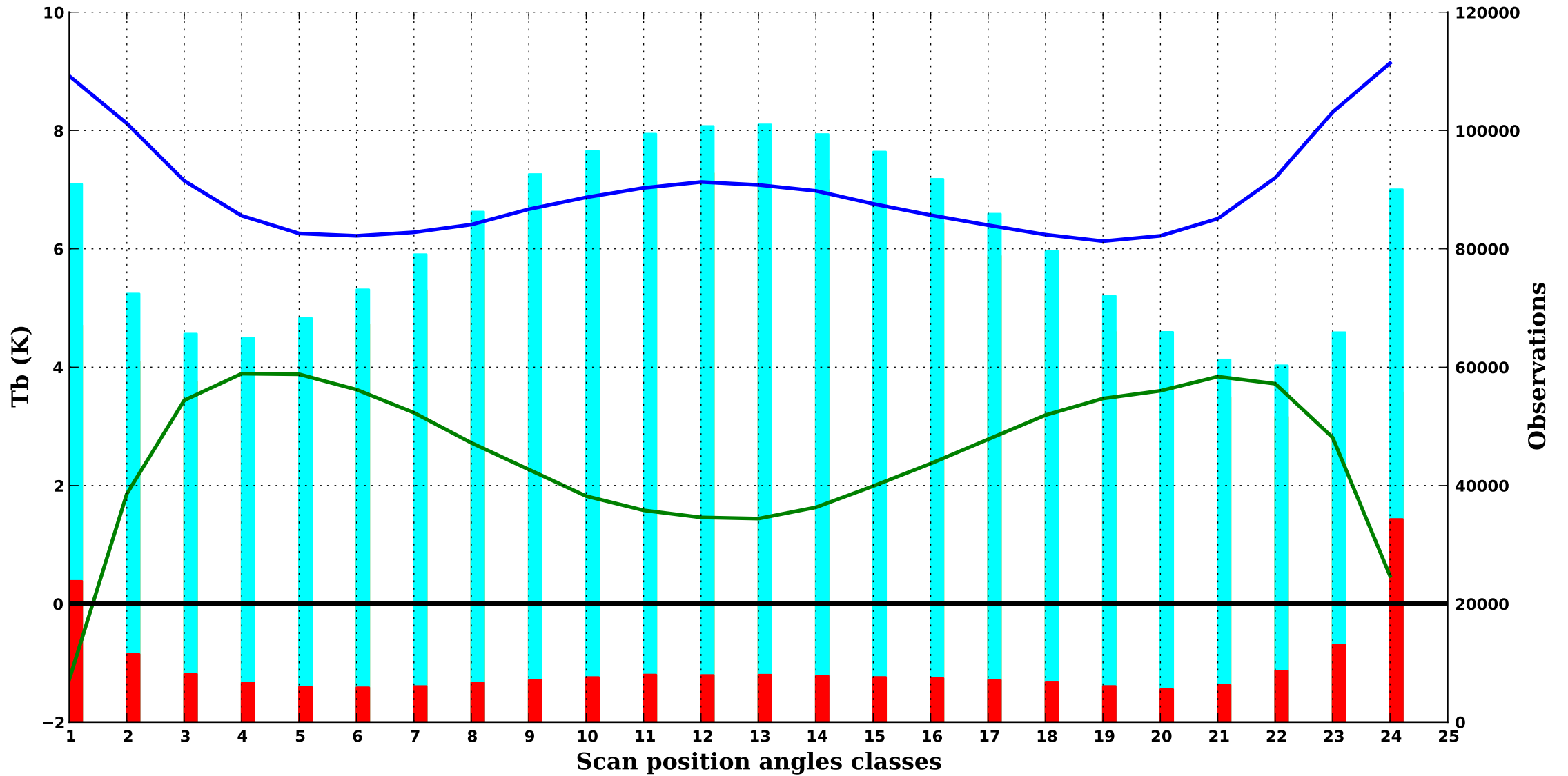


cloudy/

ATMS 1

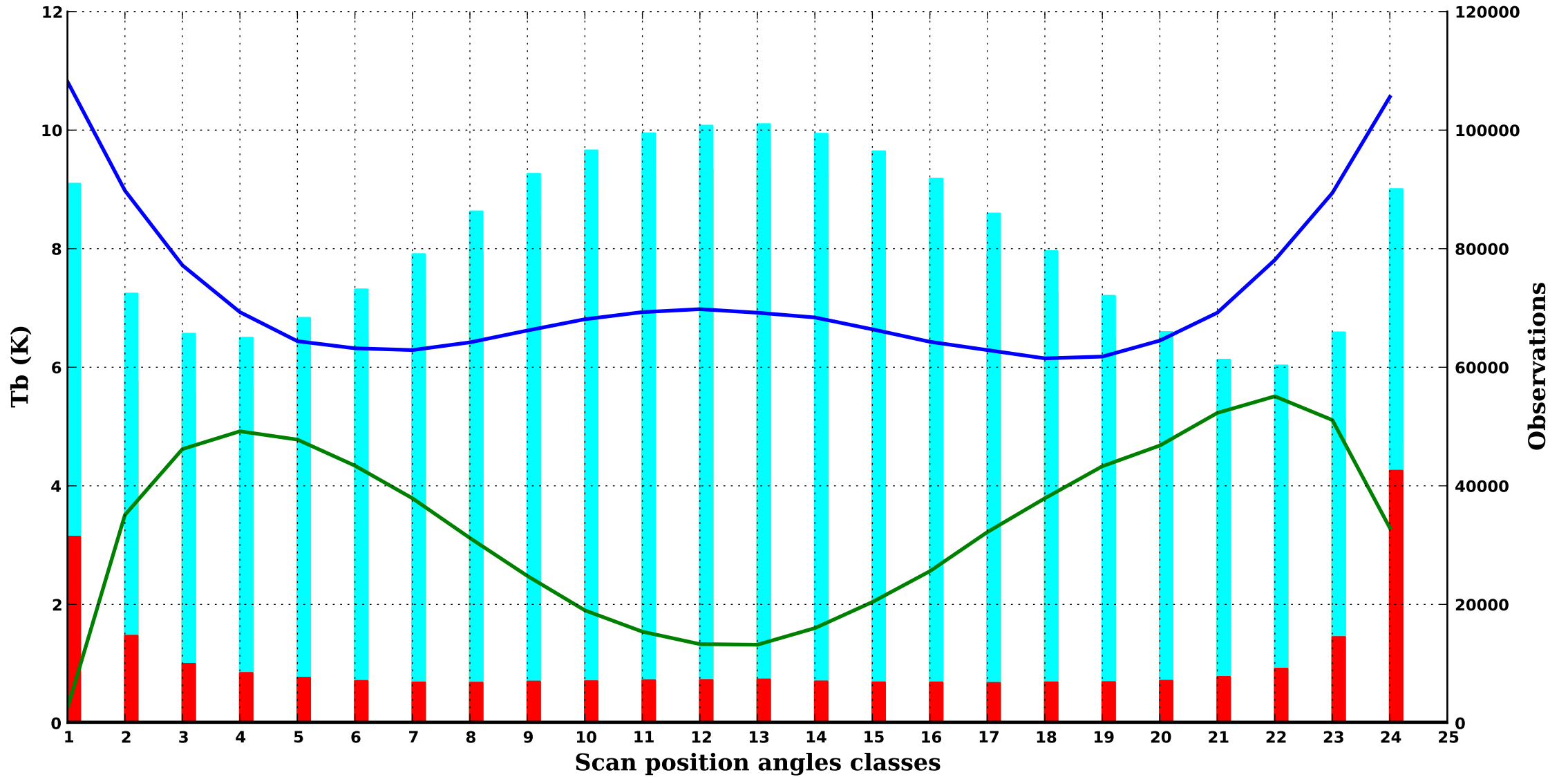
1000 hPa



cloudy/

ATMS 2

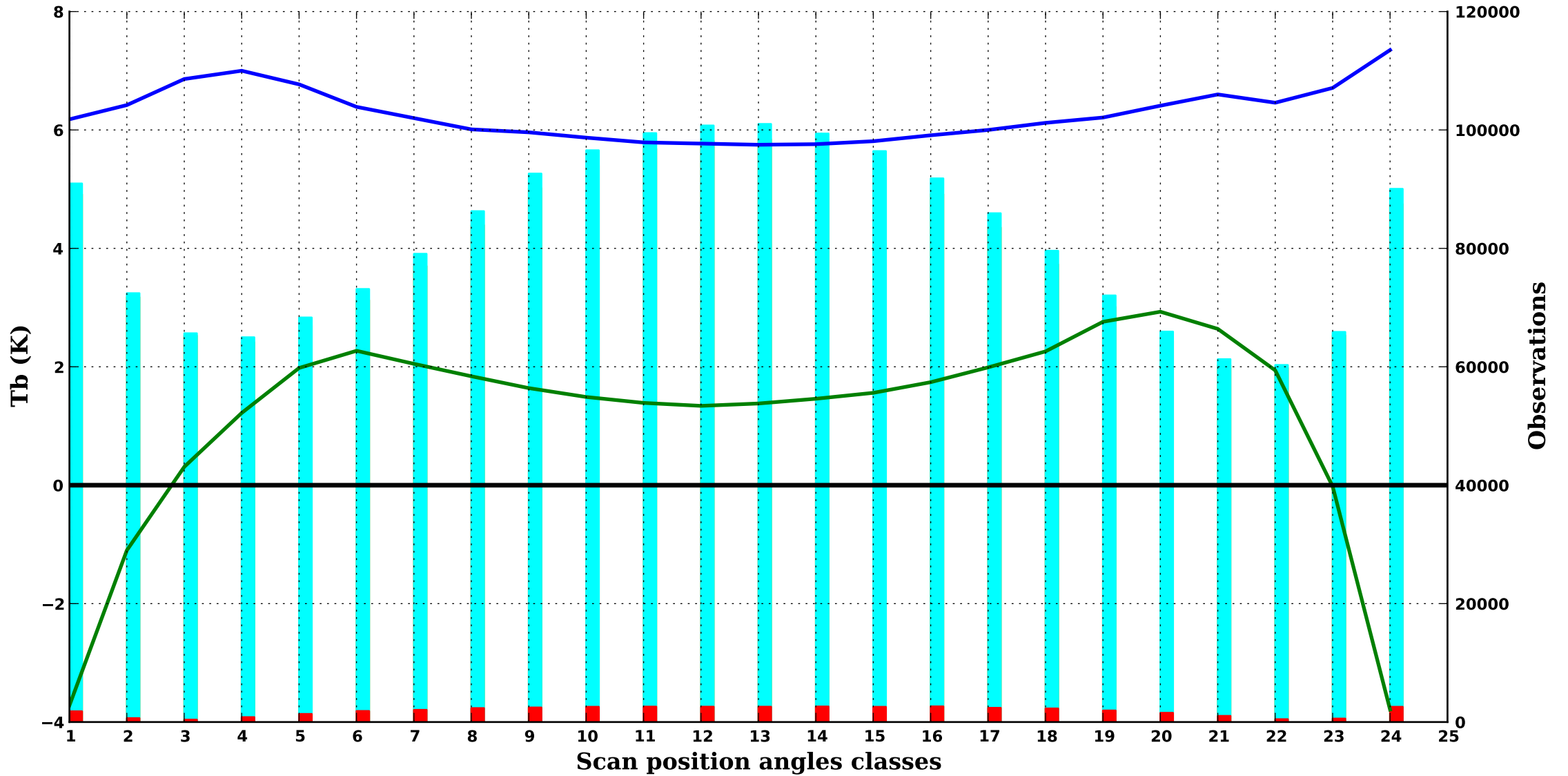
1000 hPa



cloudy/

ATMS 3

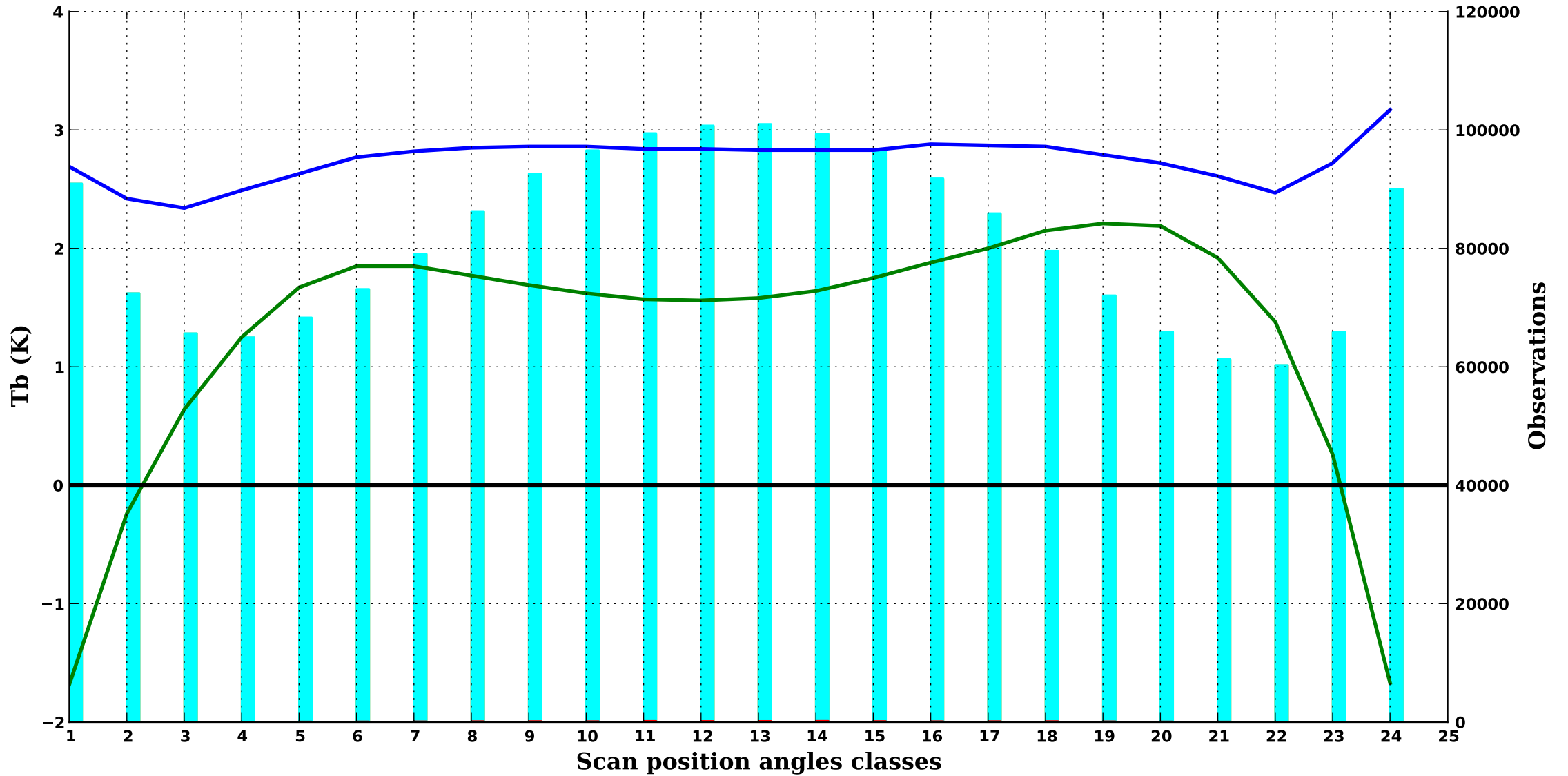
1000 hPa



cloudy/

ATMS 4

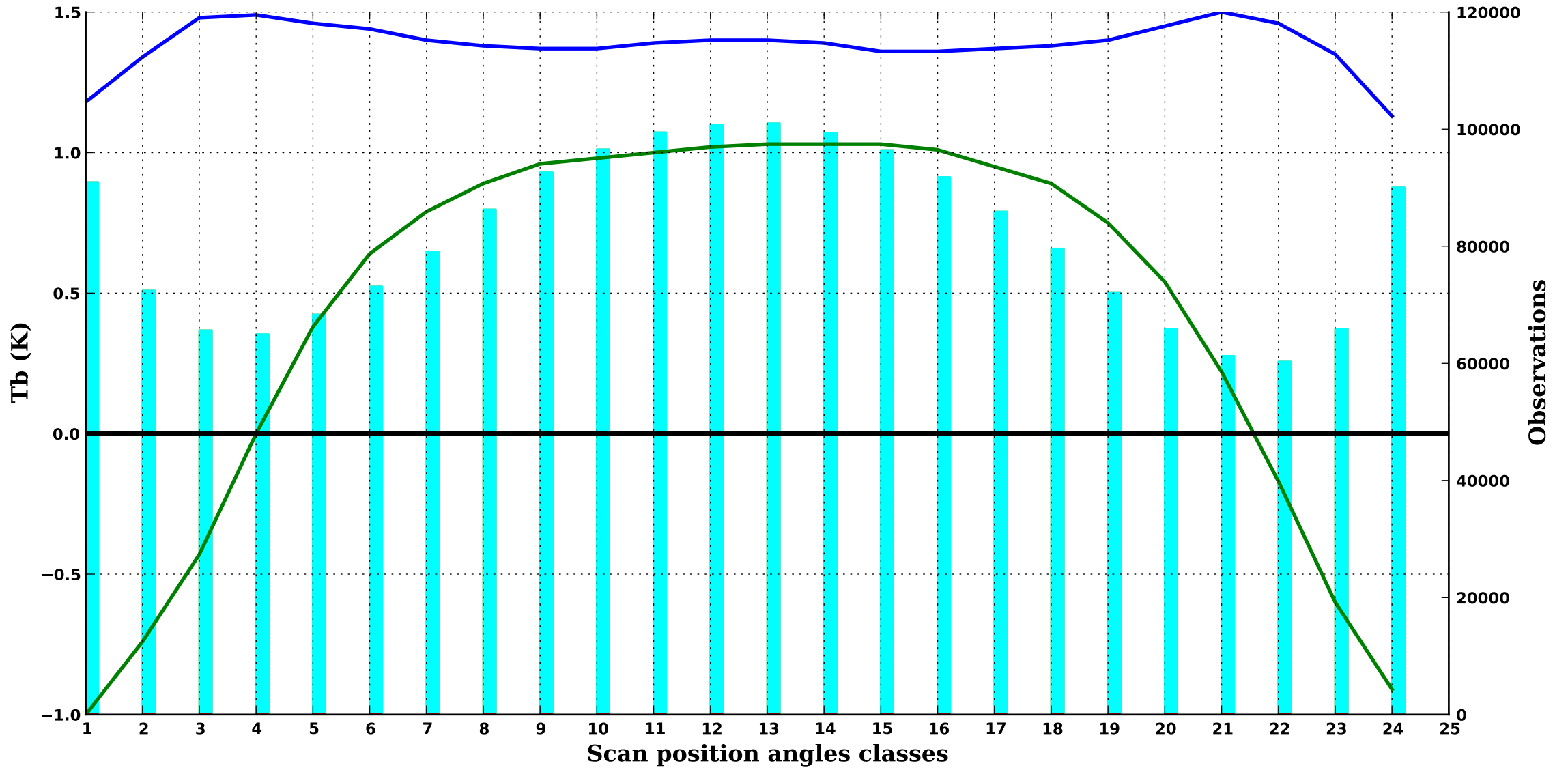
1000 hPa



cloudy/

ATMS 5

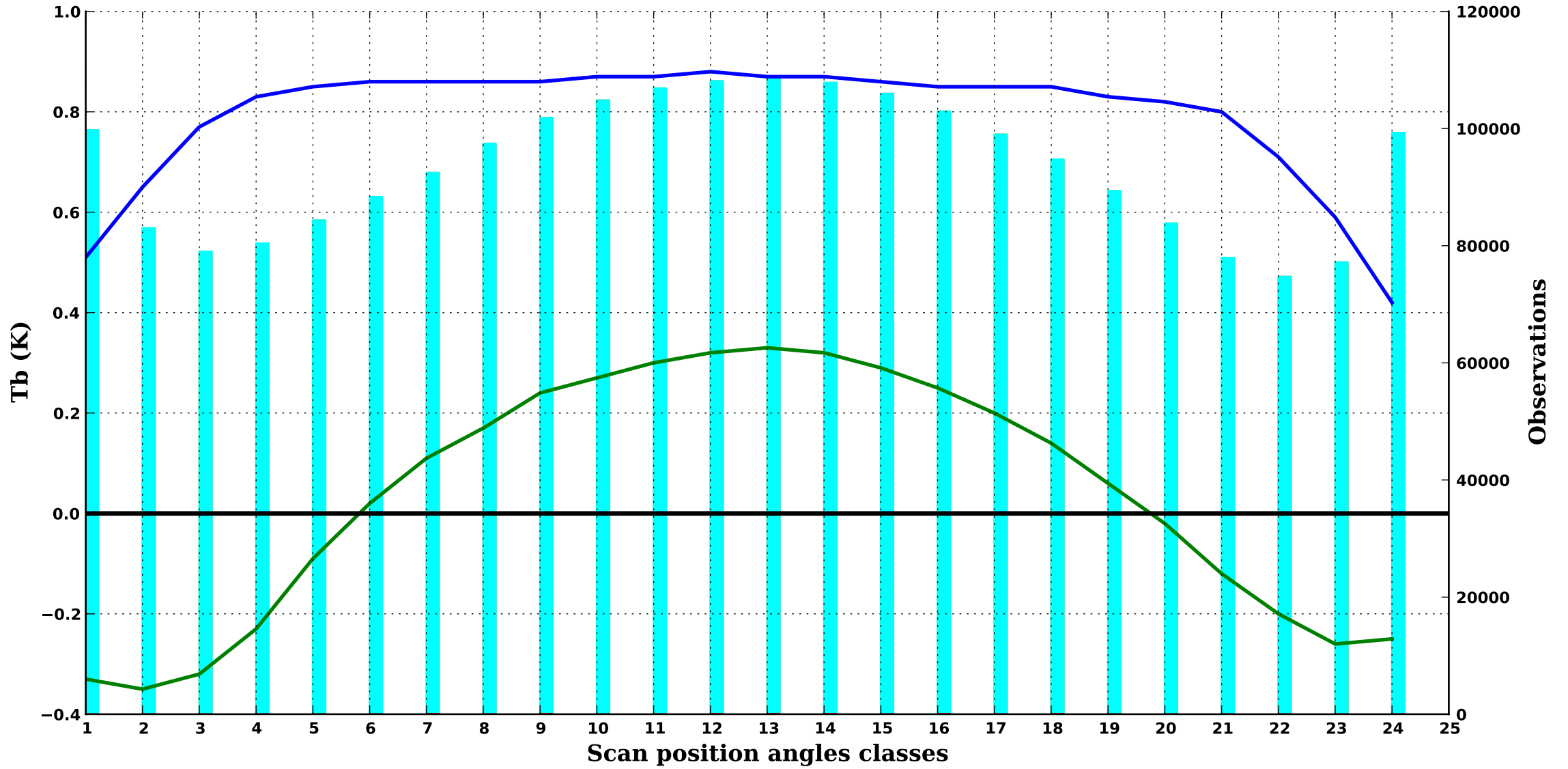
900 hPa



cloudy/

ATMS 6

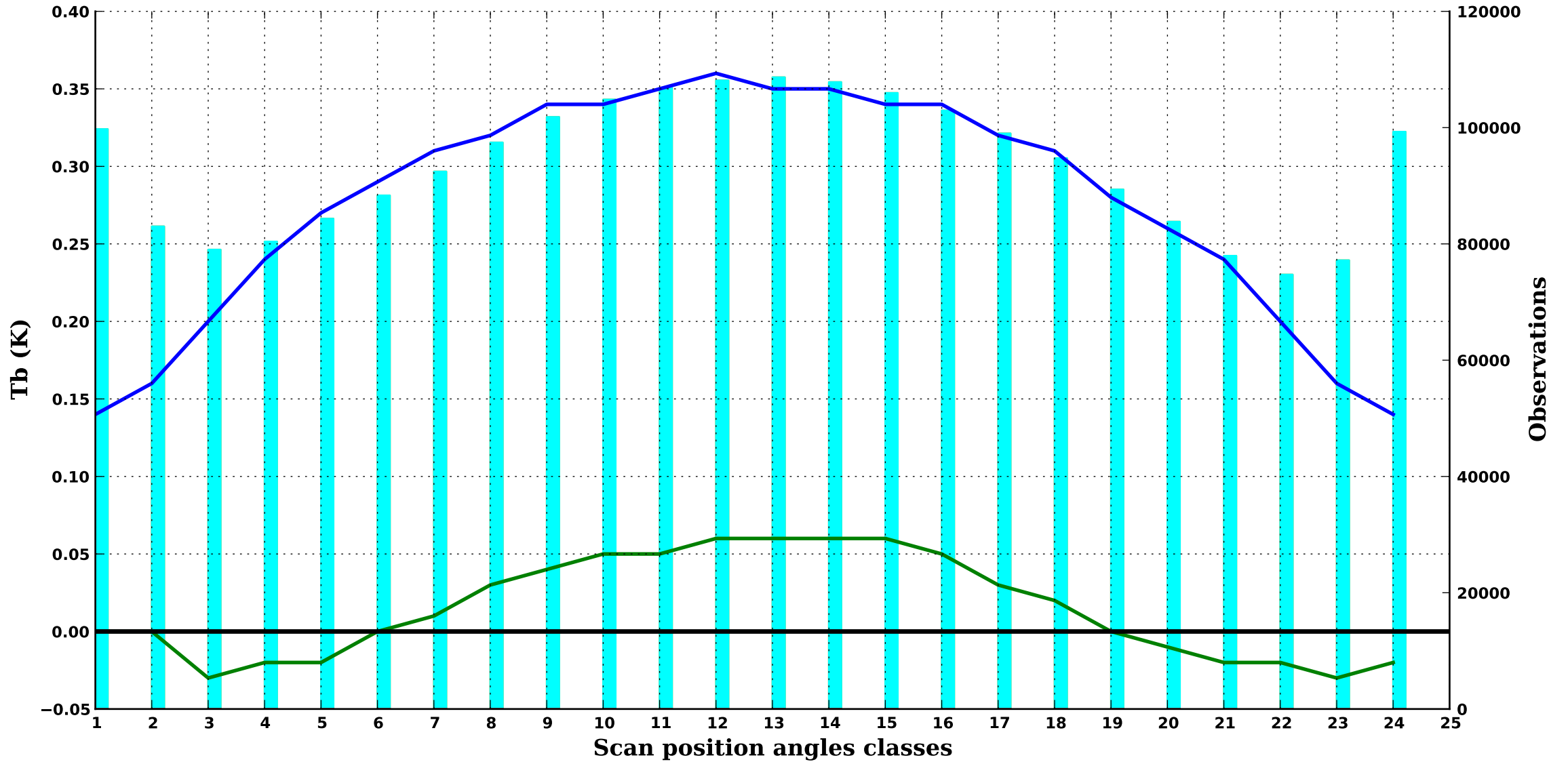
650 hPa



cloudy/

ATMS 7

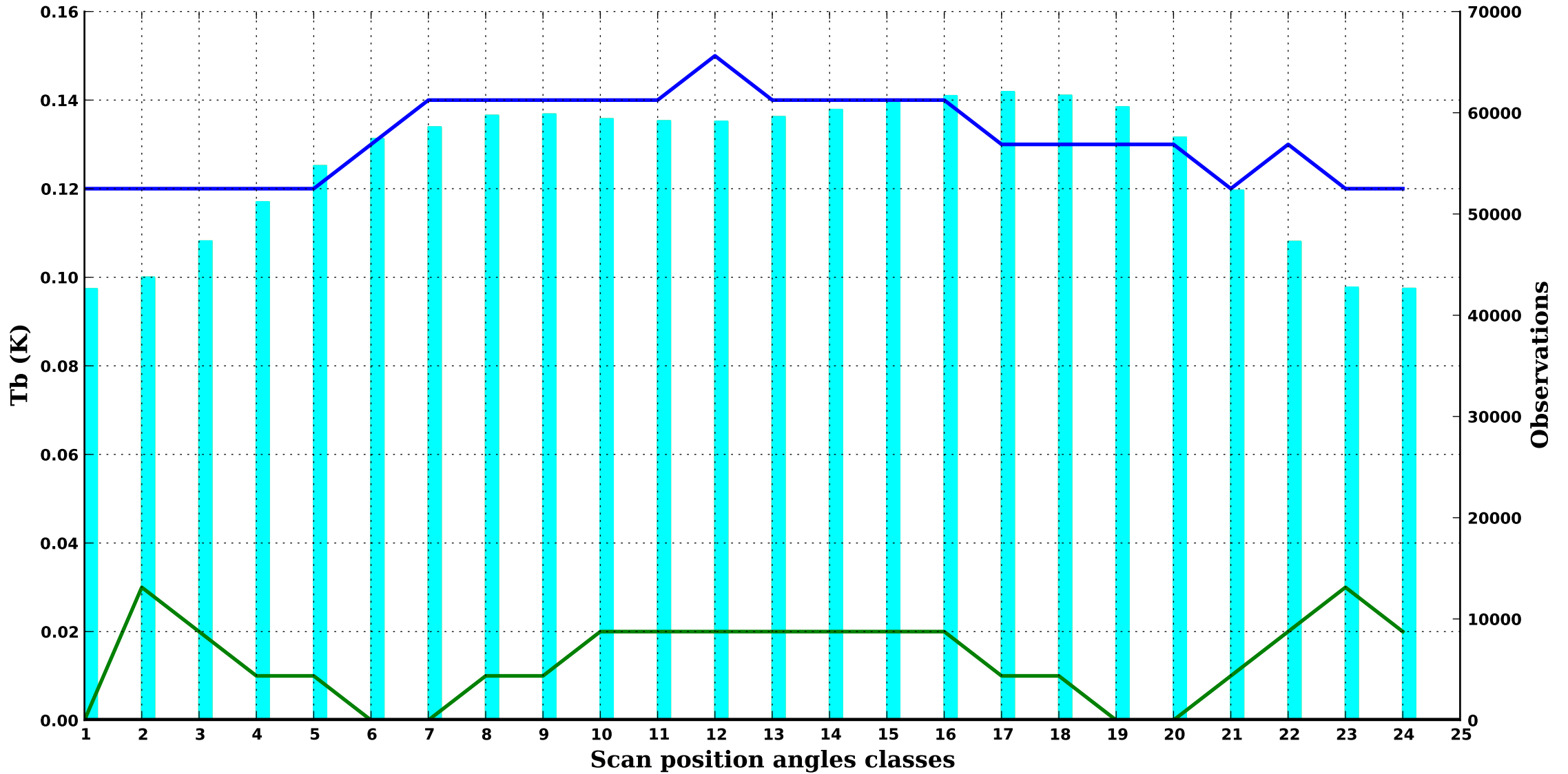
400 hPa



cloudy/

ATMS 8

290 hPa





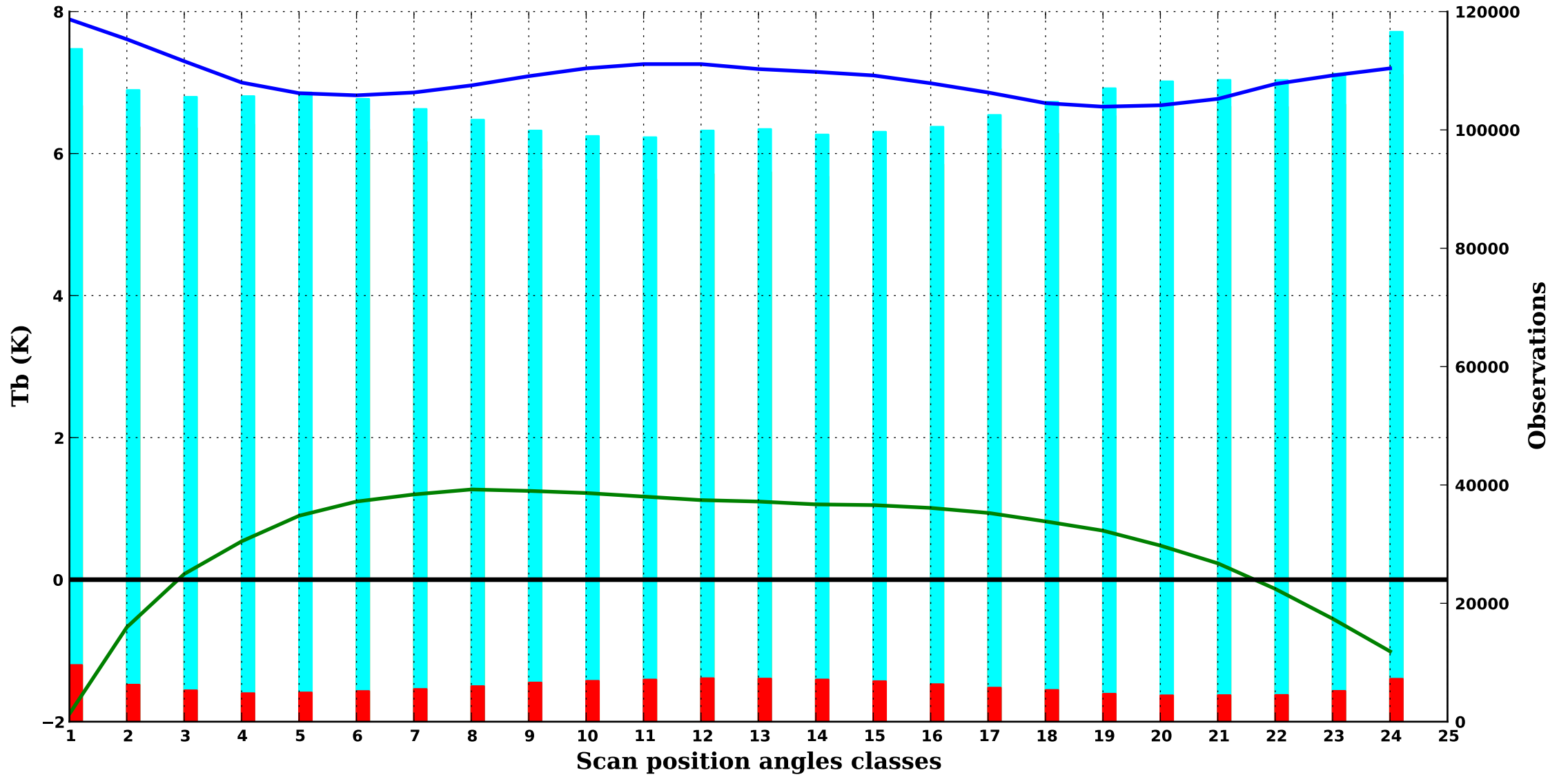
NOAA 20

Period : 202504

cloudy/

ATMS 16

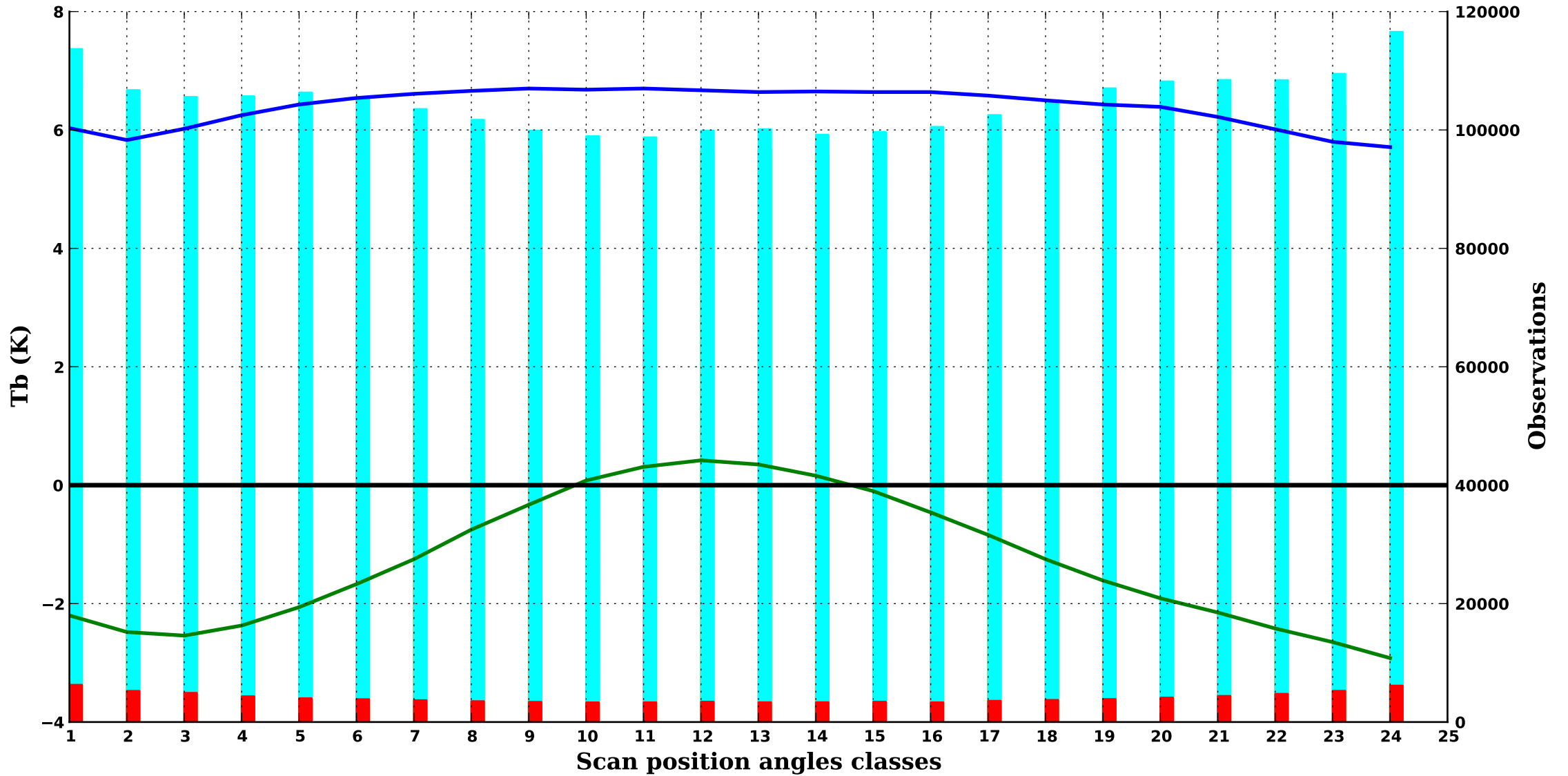
1000 hPa



cloudy/

ATMS 17

850 hPa



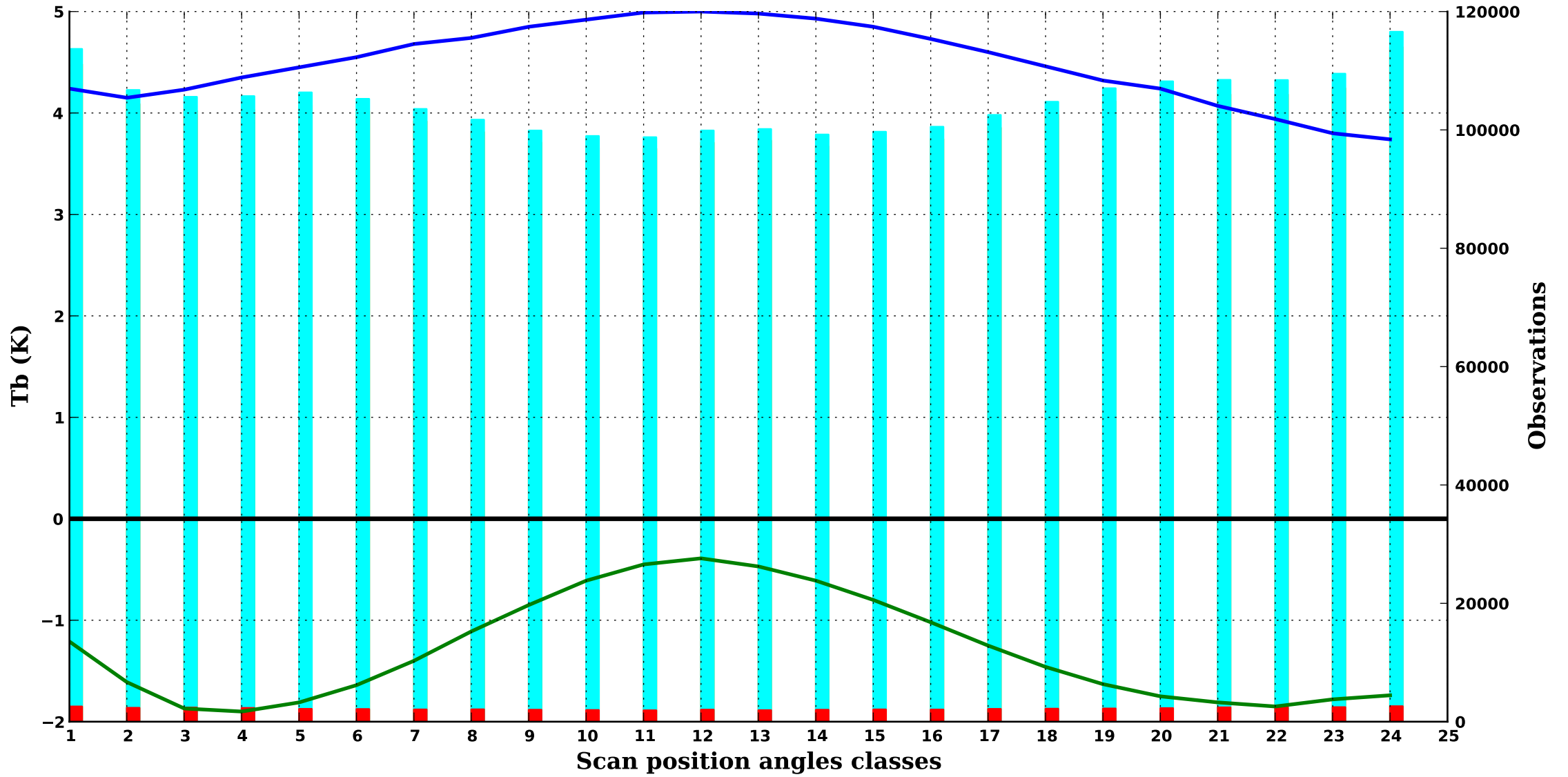
NOAA 20

Period : 202504

cloudy/

ATMS 18

700 hPa



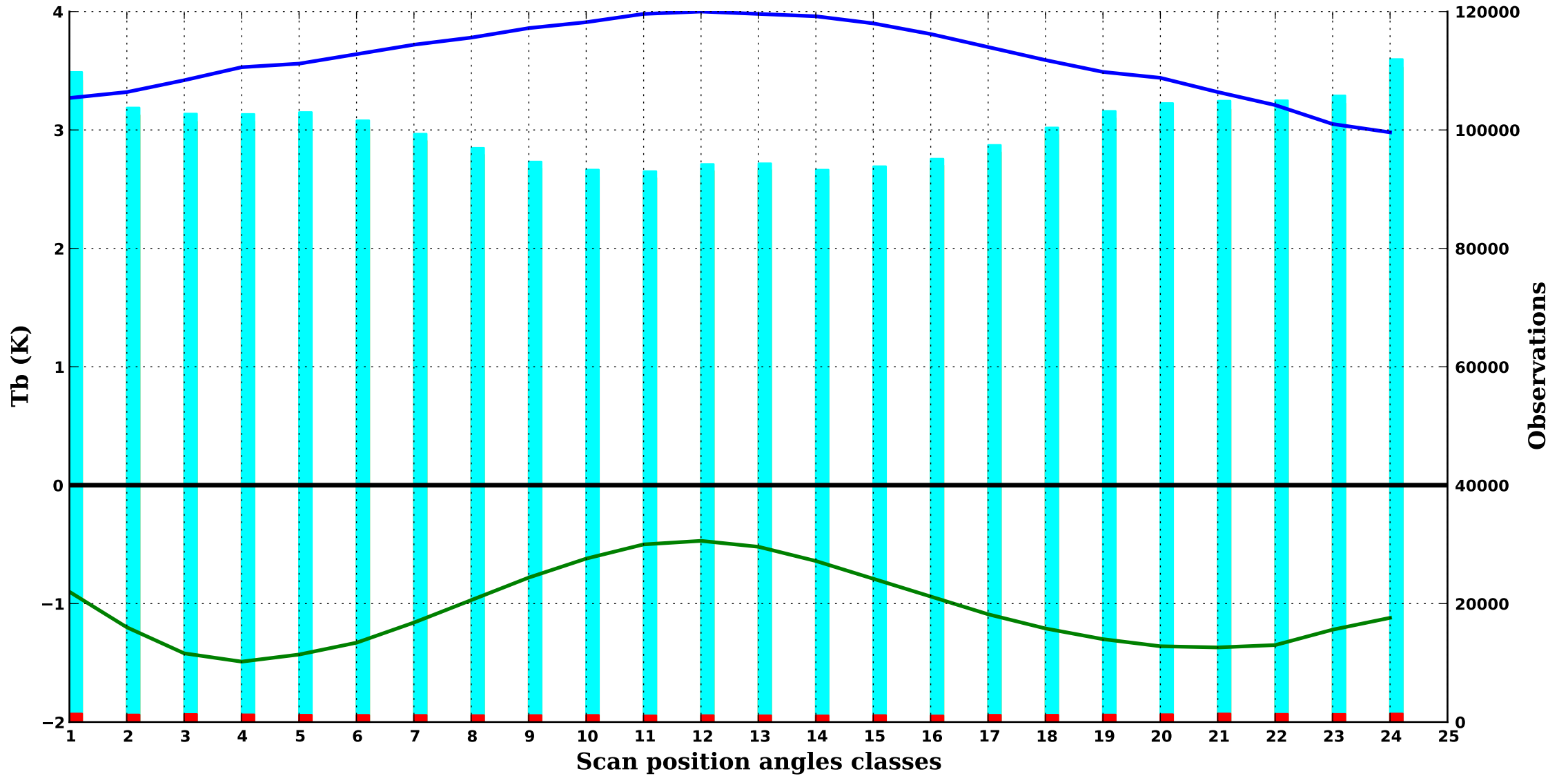
NOAA 20

Period : 202504

cloudy/

ATMS 19

550 hPa



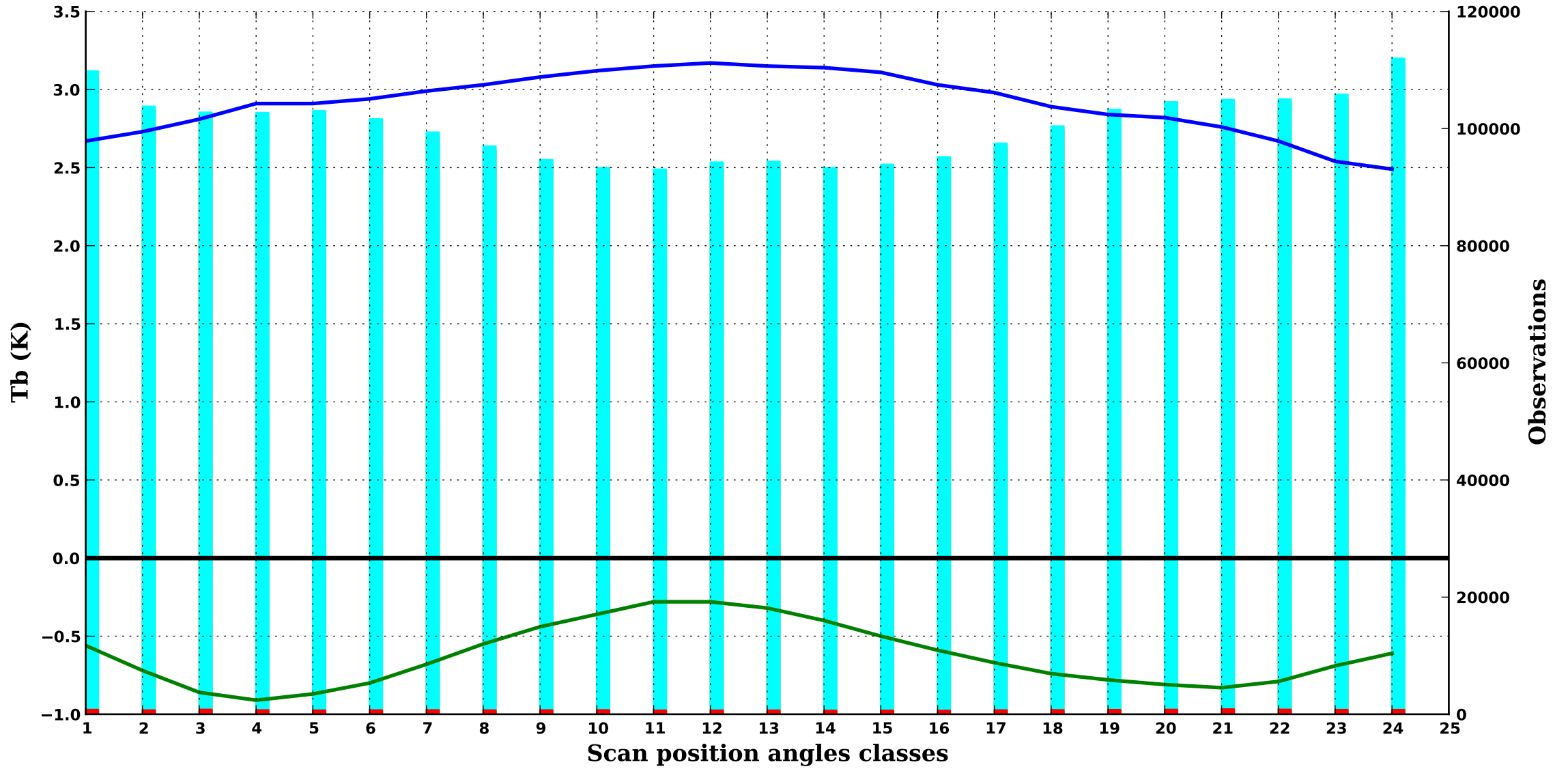
NOAA 20

Period : 202504

cloudy/

ATMS 20

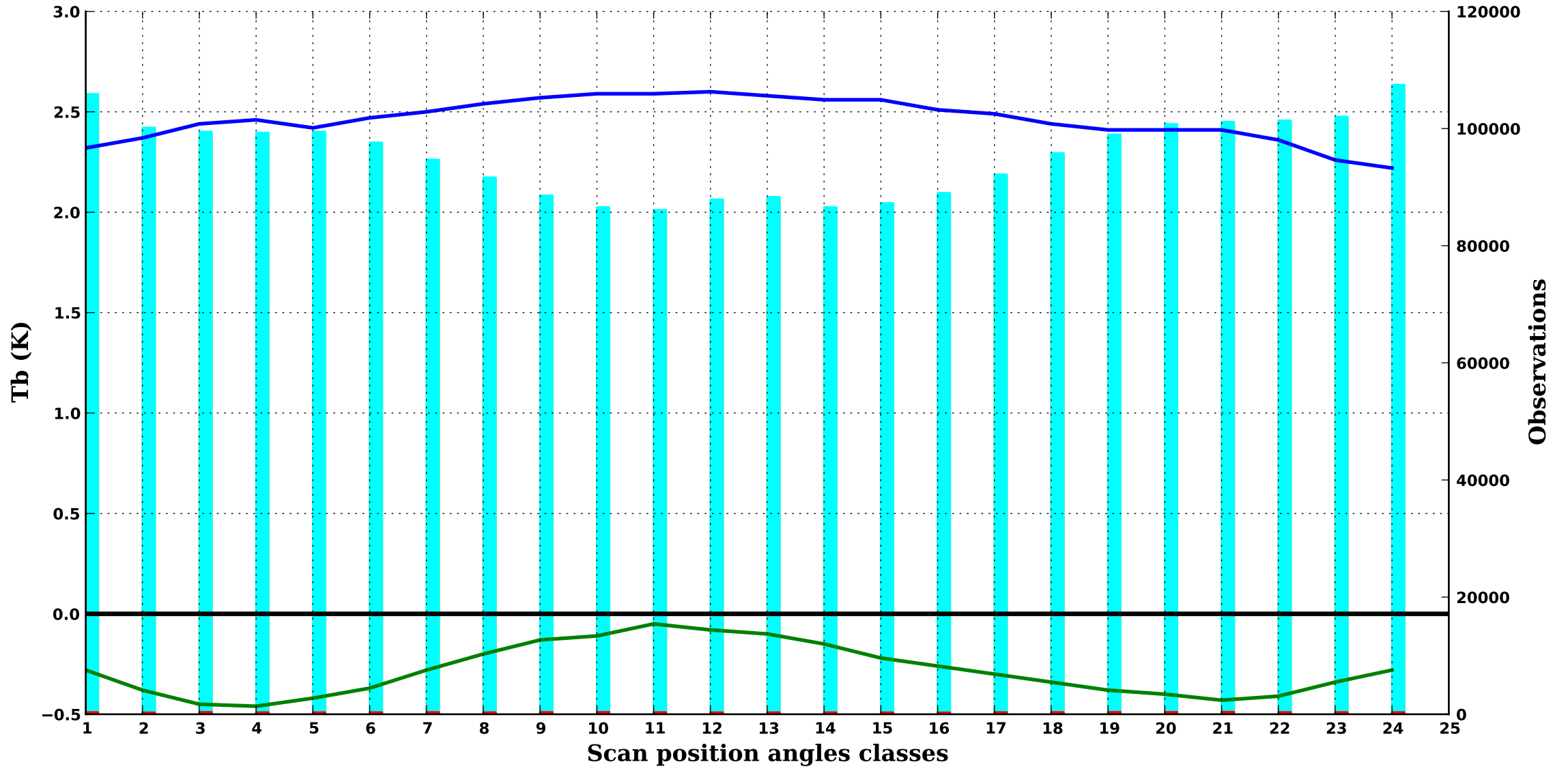
500 hPa



cloudy/

ATMS 21

400 hPa



NOAA 20

Period : 202504

cloudy/

ATMS 22

350 hPa

