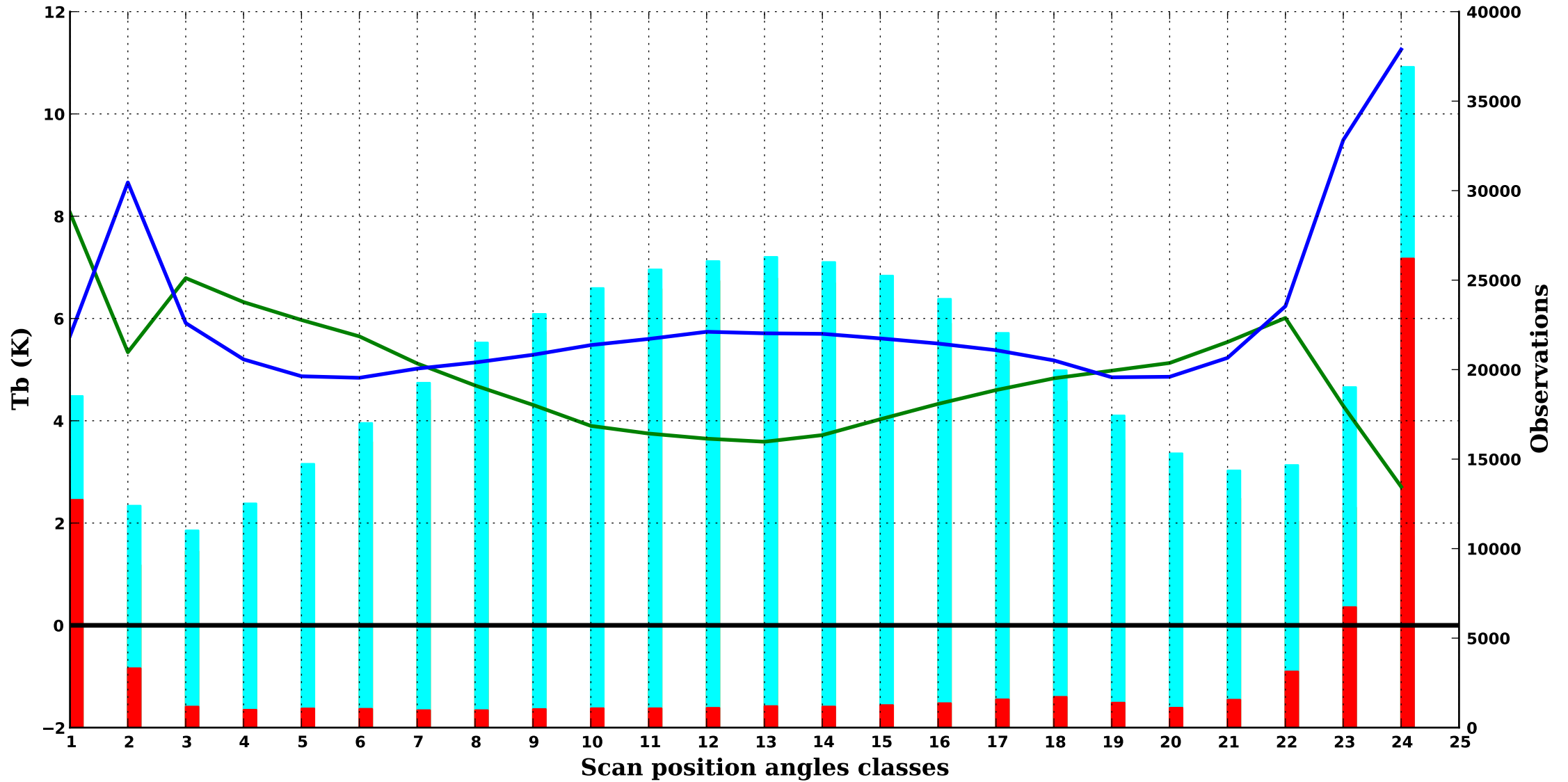


cloudy/sea ice

ATMS 1

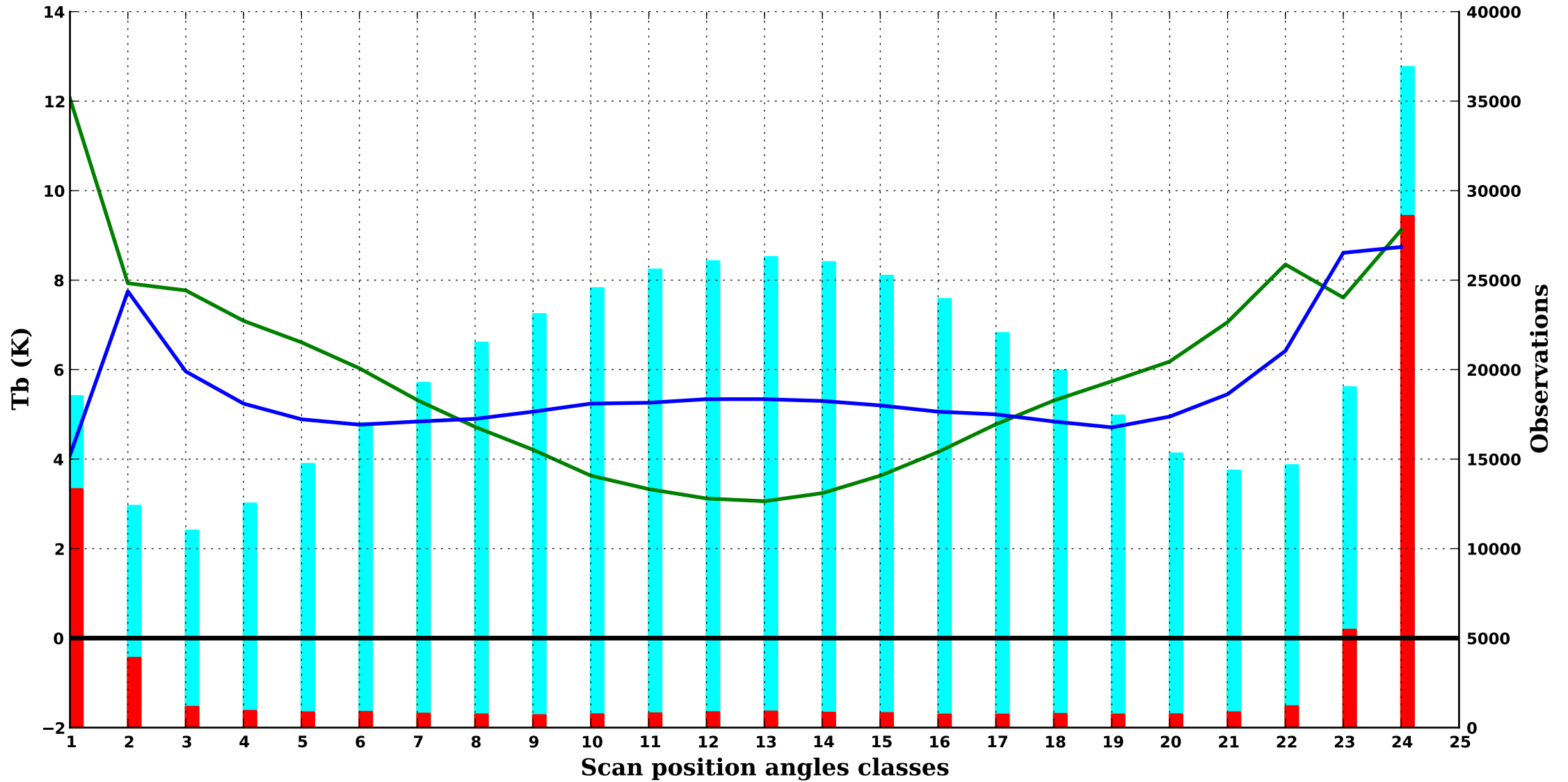
1000 hPa



cloudy/sea ice

ATMS 2

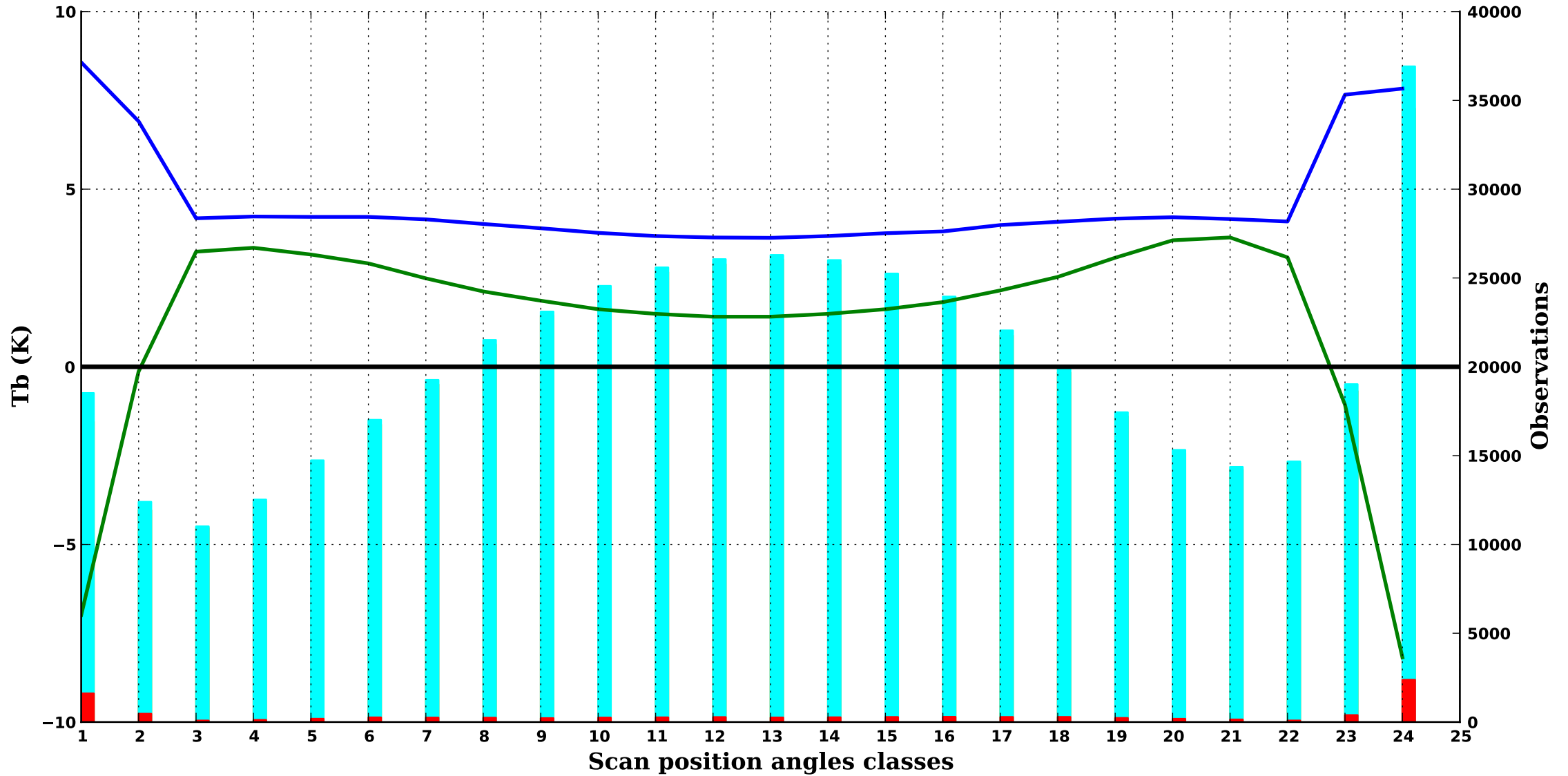
1000 hPa



cloudy/sea ice

ATMS 3

1000 hPa



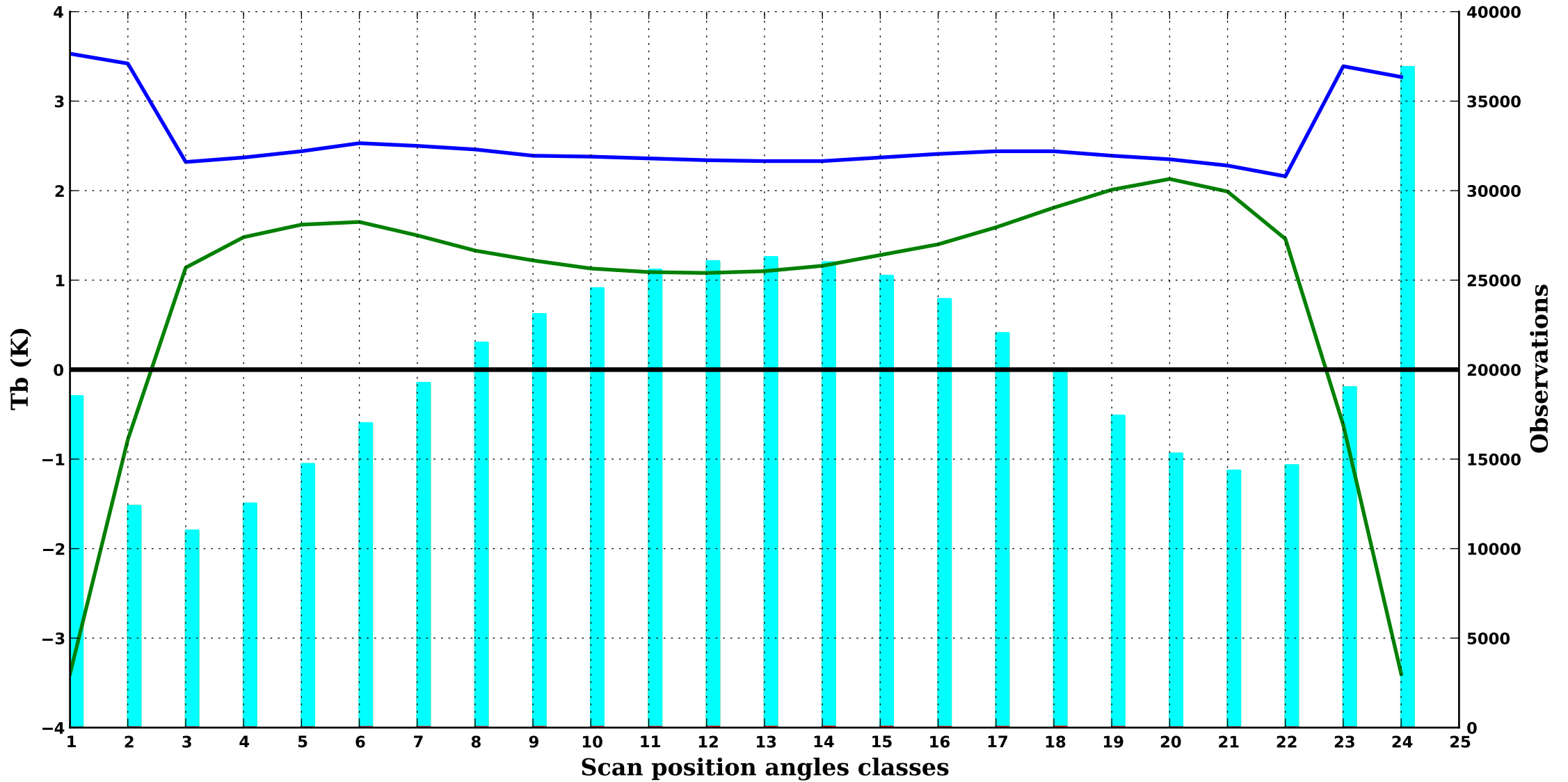
NOAA 20

Period : 202504

cloudy/sea ice

ATMS 4

1000 hPa



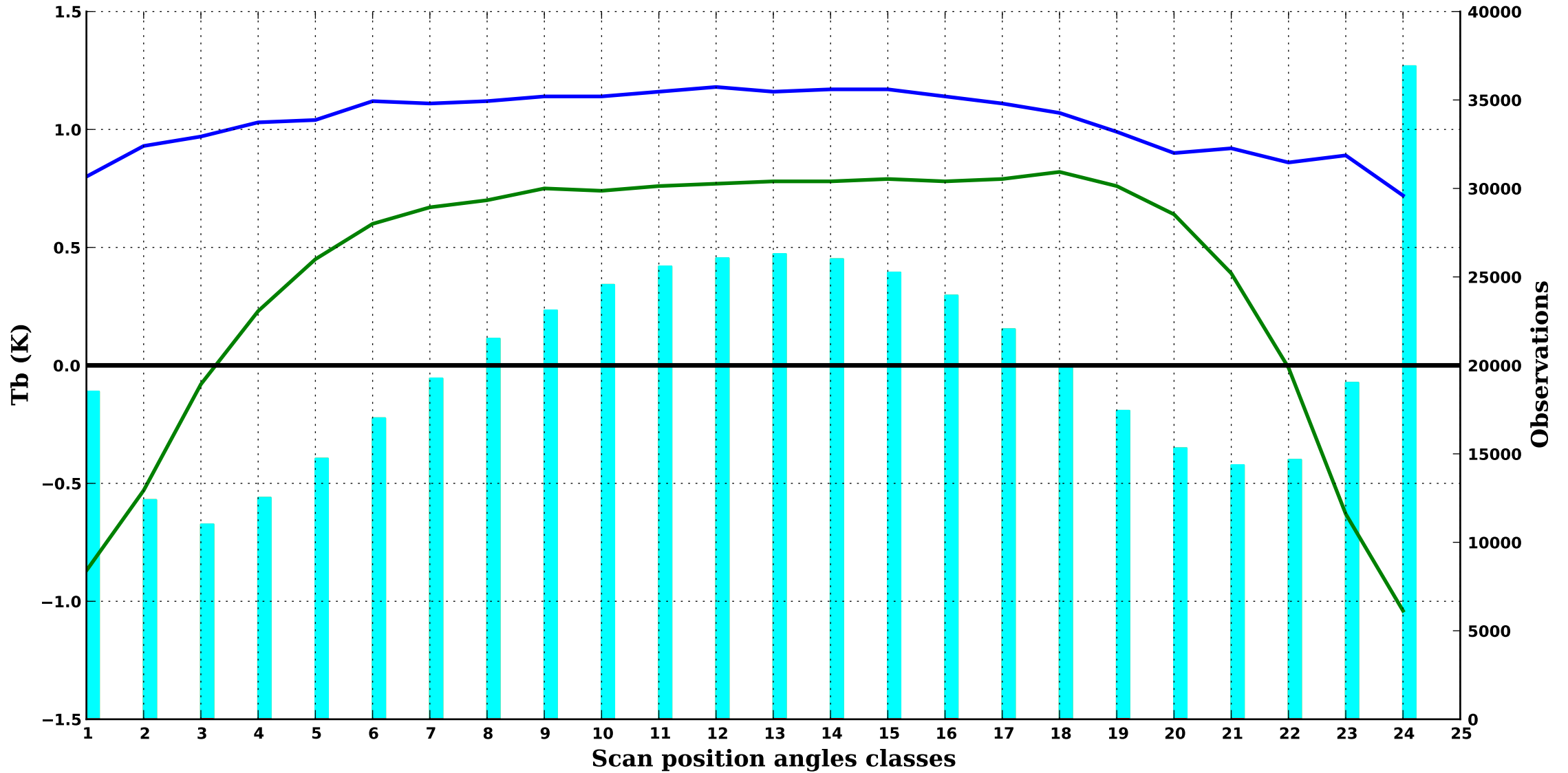
NOAA 20

Period : 202504

cloudy/sea ice

ATMS 5

900 hPa



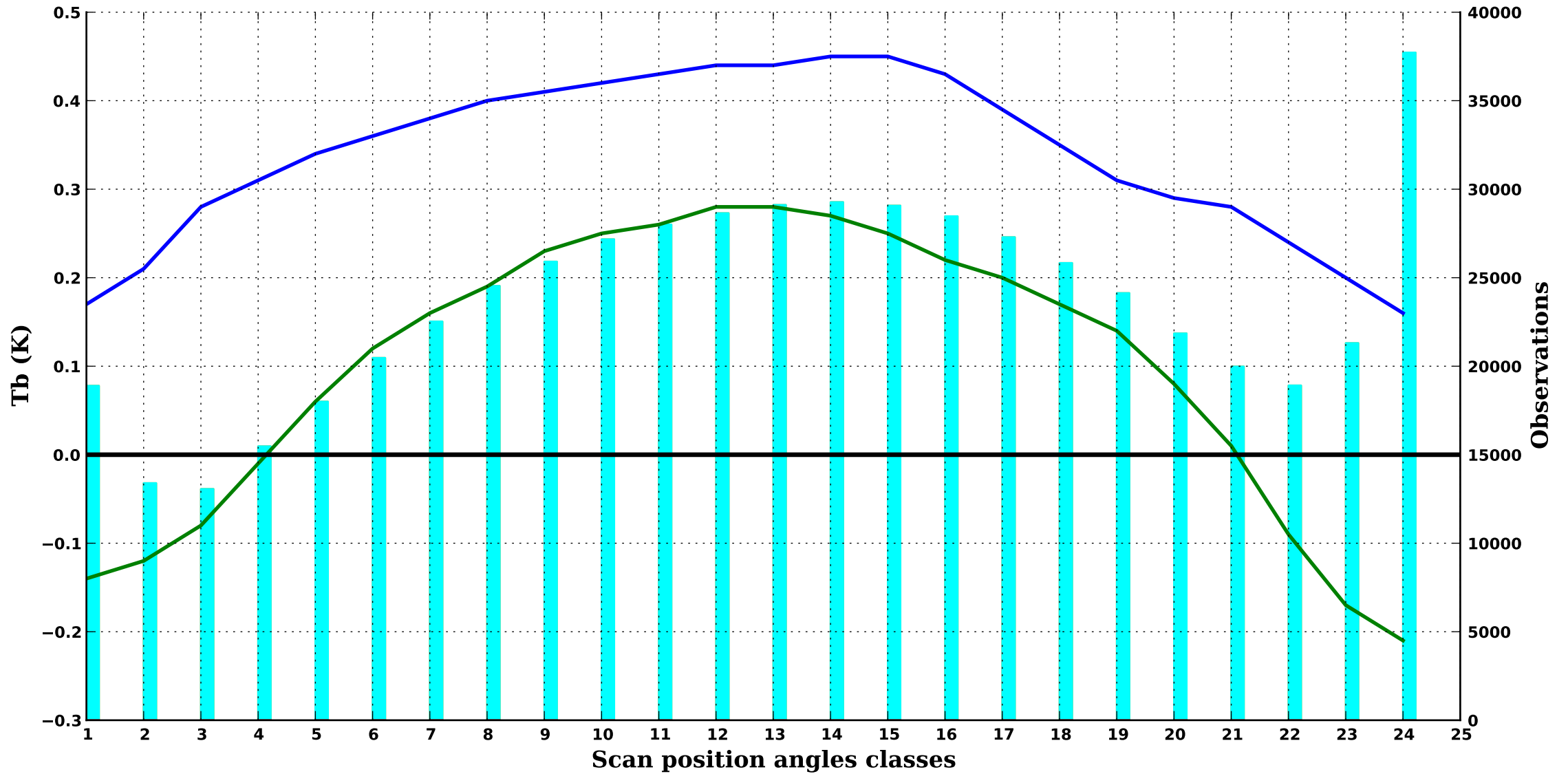
NOAA 20

Period : 202504

cloudy/sea ice

ATMS 6

650 hPa



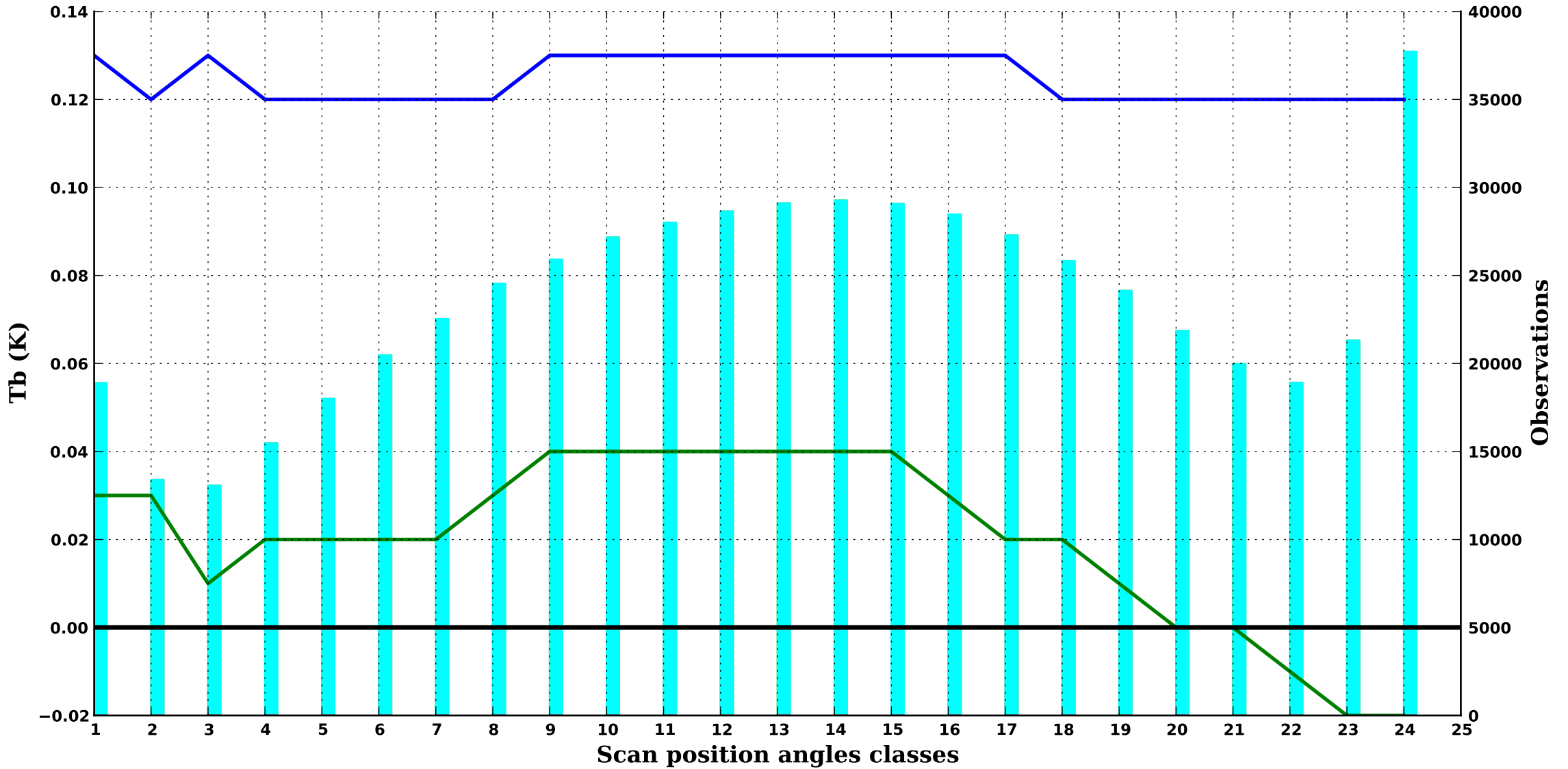
NOAA 20

Period : 202504

cloudy/sea ice

ATMS 7

400 hPa



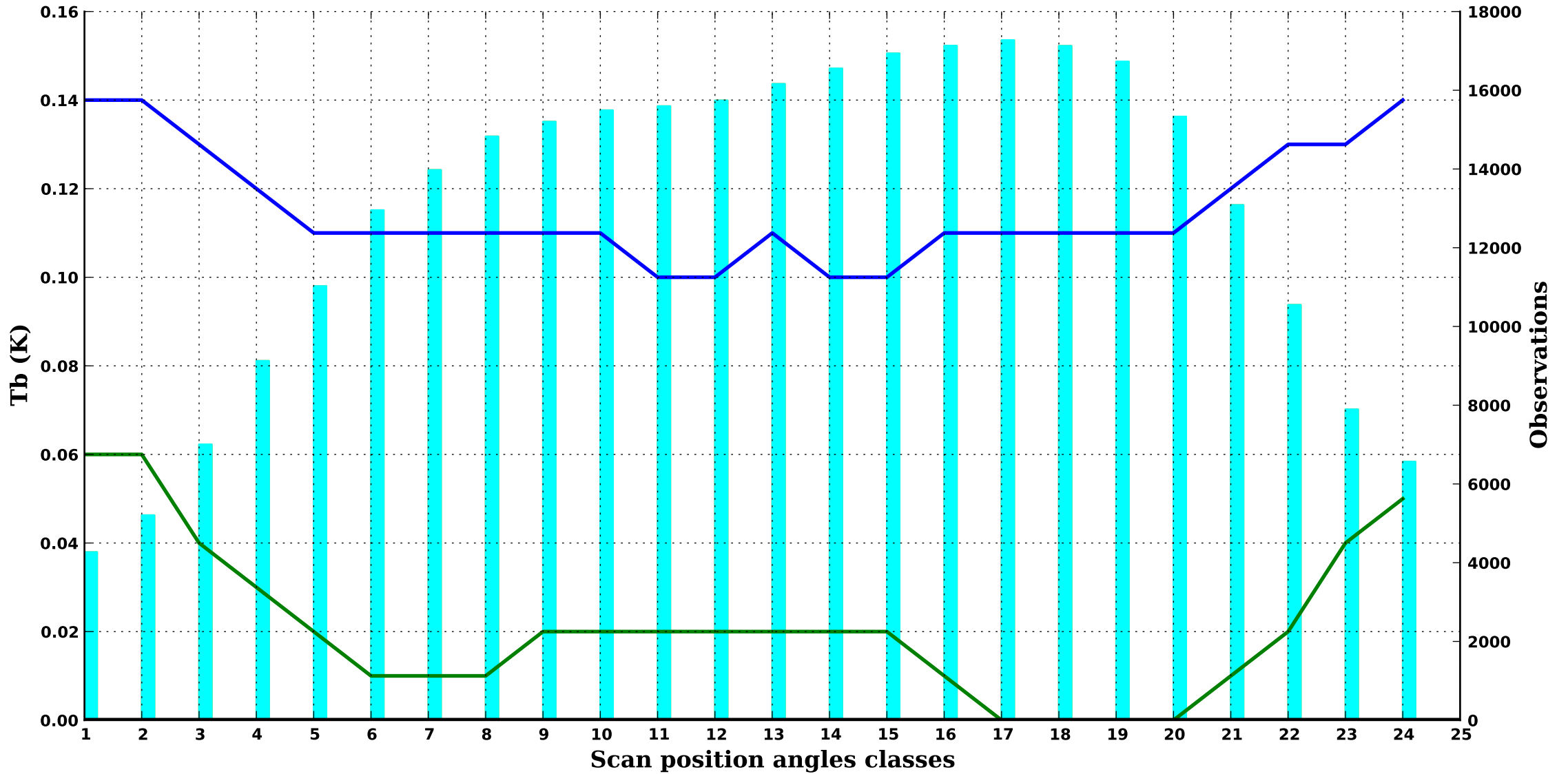
NOAA 20

Period : 202504

cloudy/sea ice

ATMS 8

290 hPa

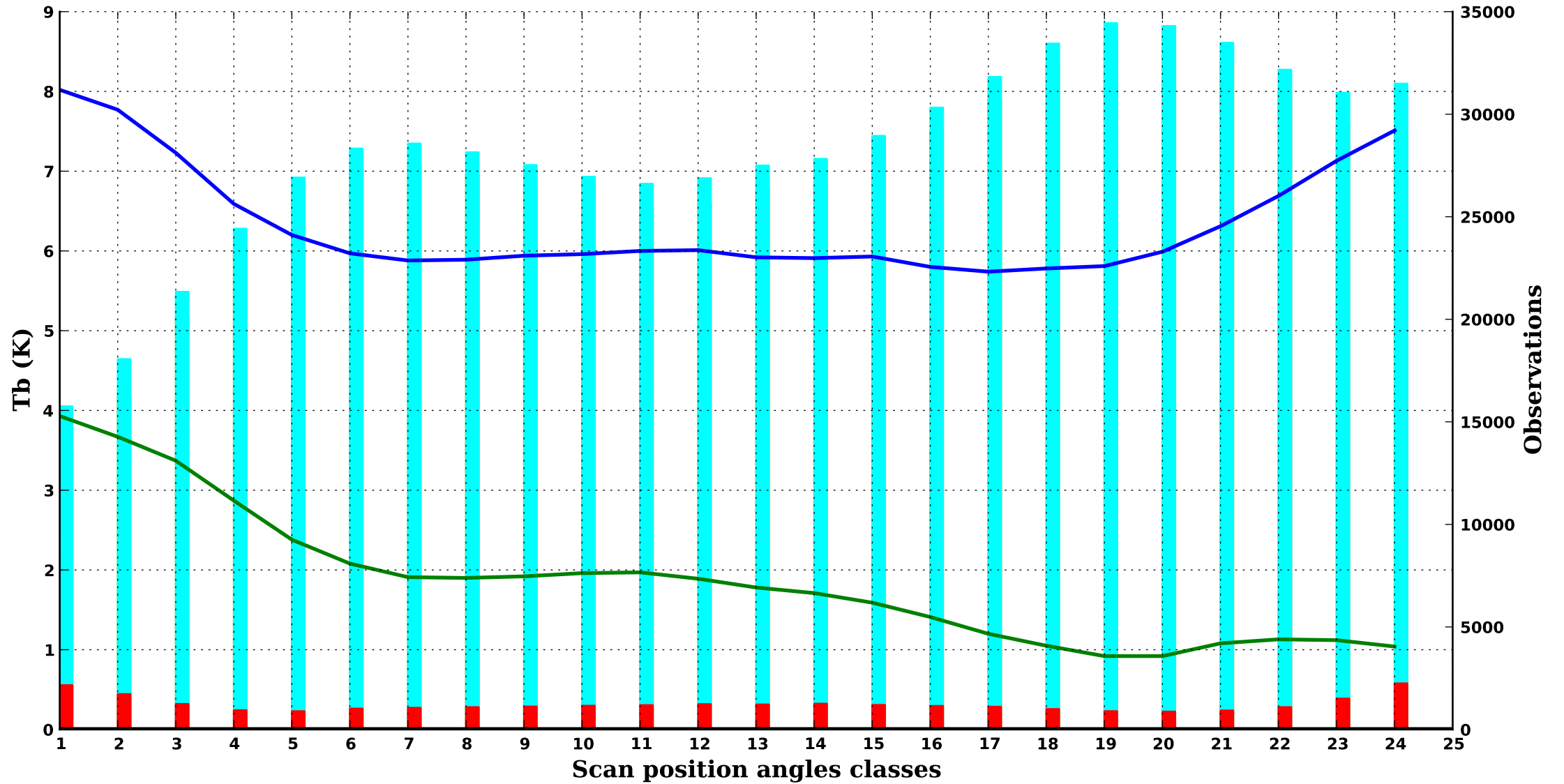




cloudy/sea ice

ATMS 16

1000 hPa



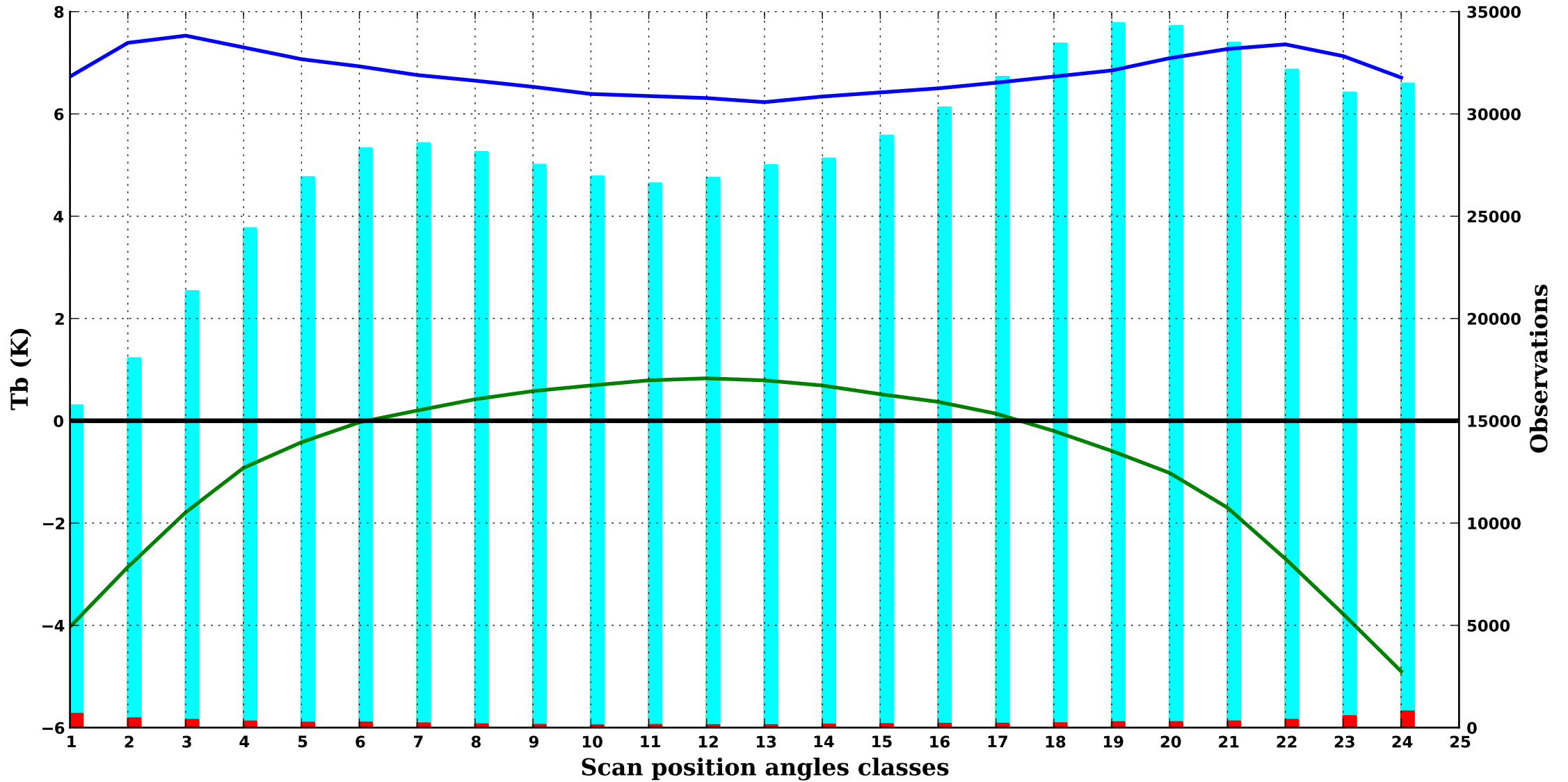
NOAA 20

Period : 202504

cloudy/sea ice

ATMS 17

850 hPa



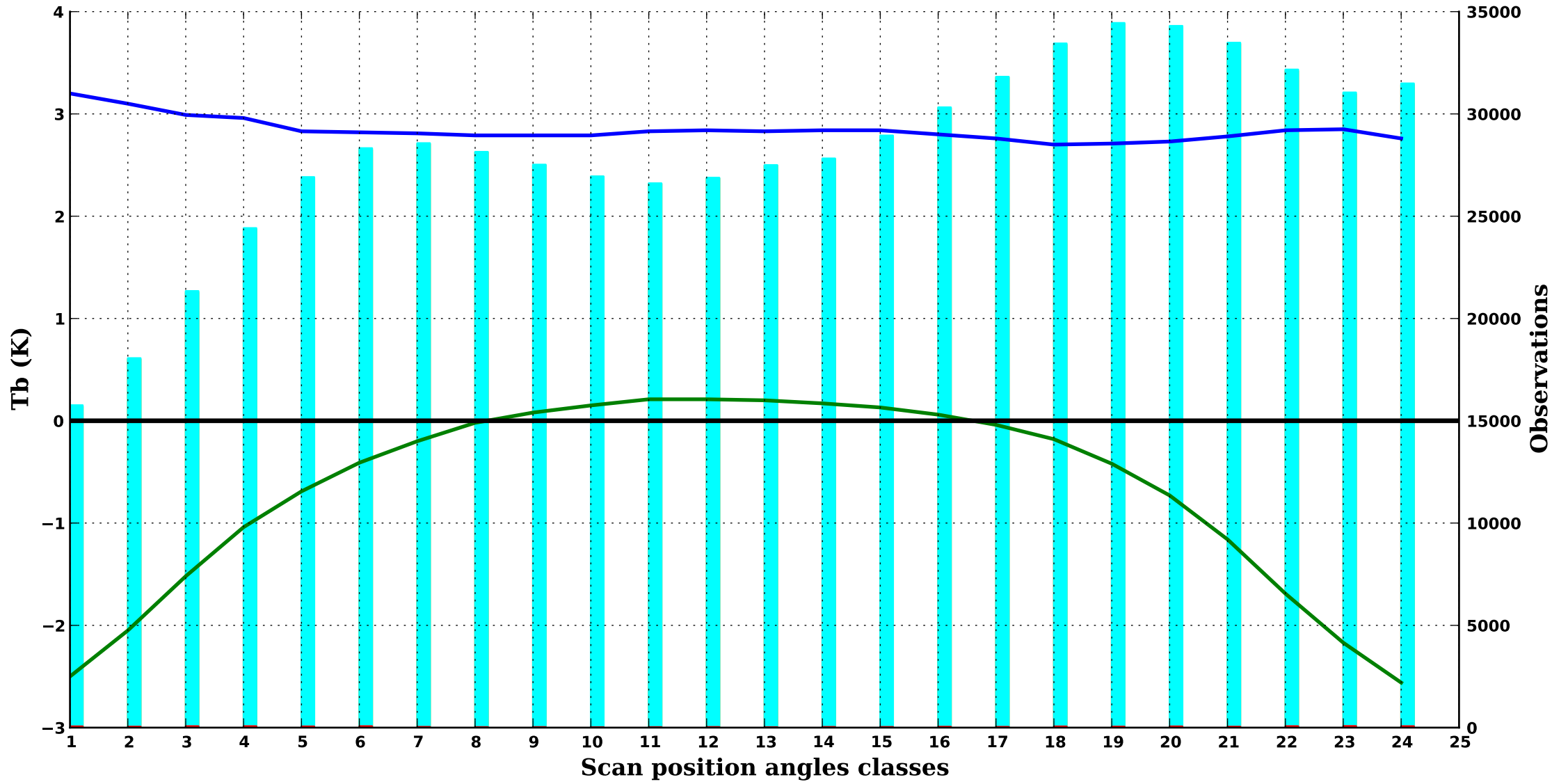
NOAA 20

Period : 202504

cloudy/sea ice

ATMS 18

700 hPa



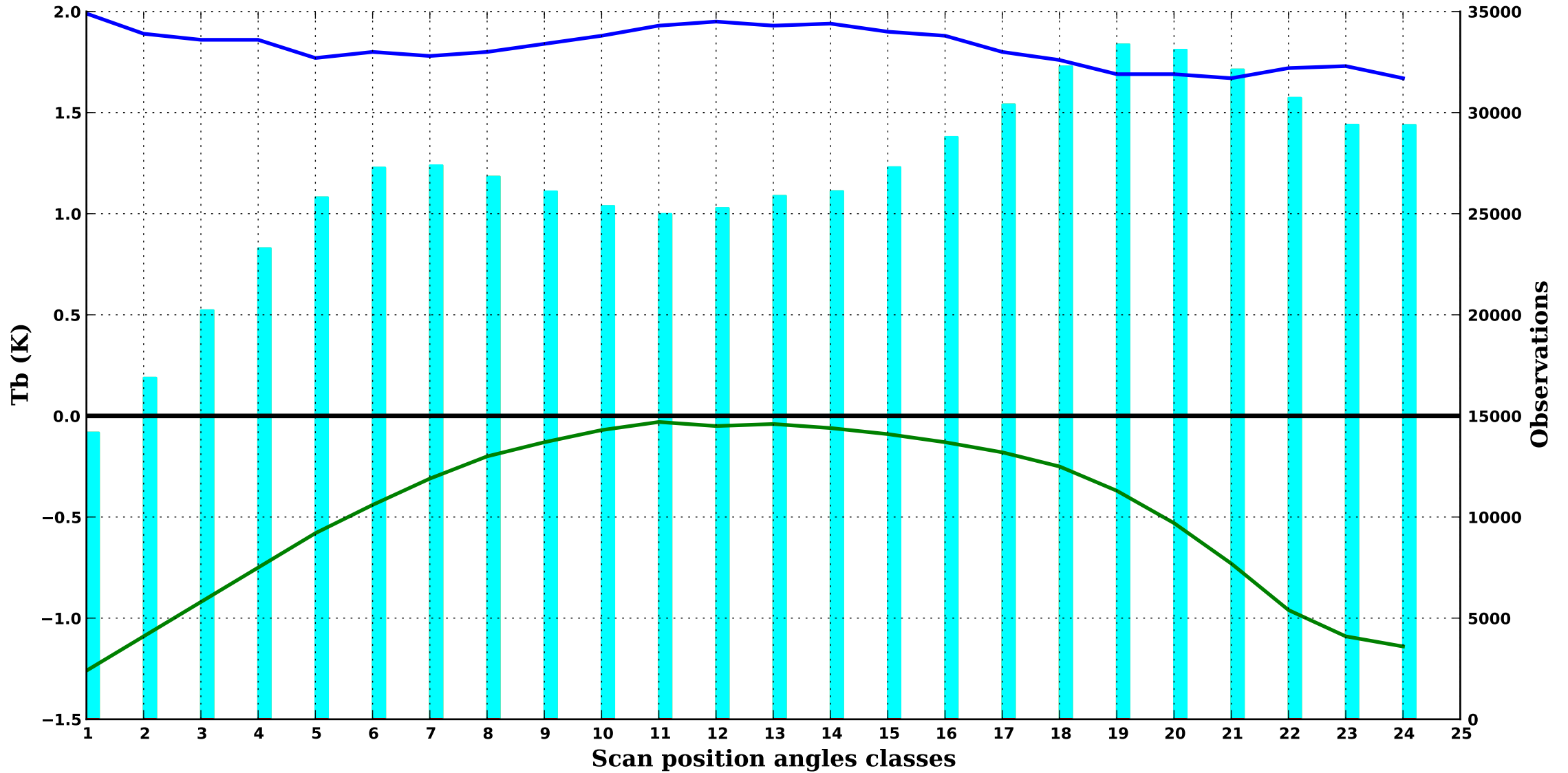
NOAA 20

Period : 202504

cloudy/sea ice

ATMS 19

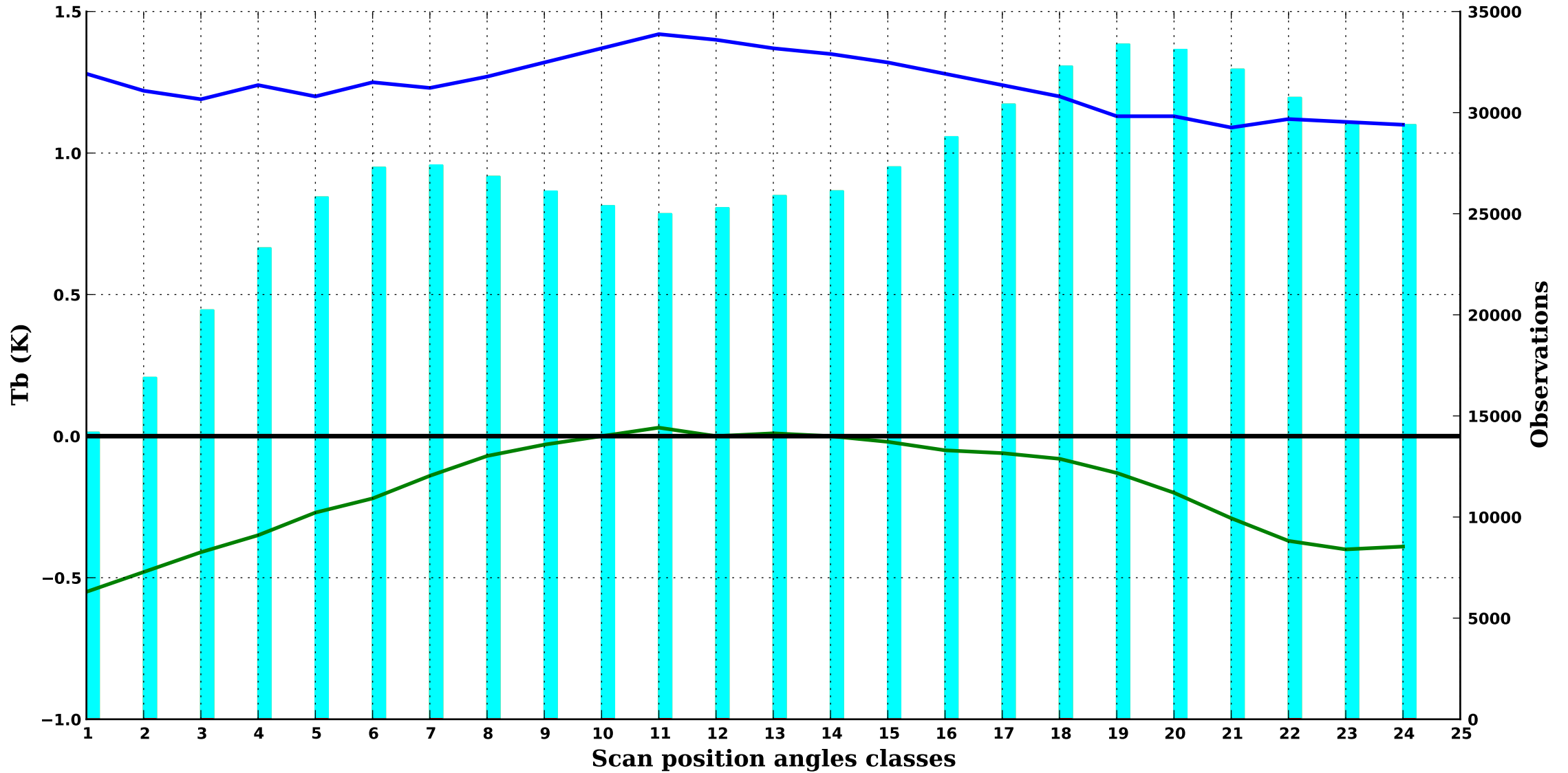
550 hPa



cloudy/sea ice

ATMS 20

500 hPa



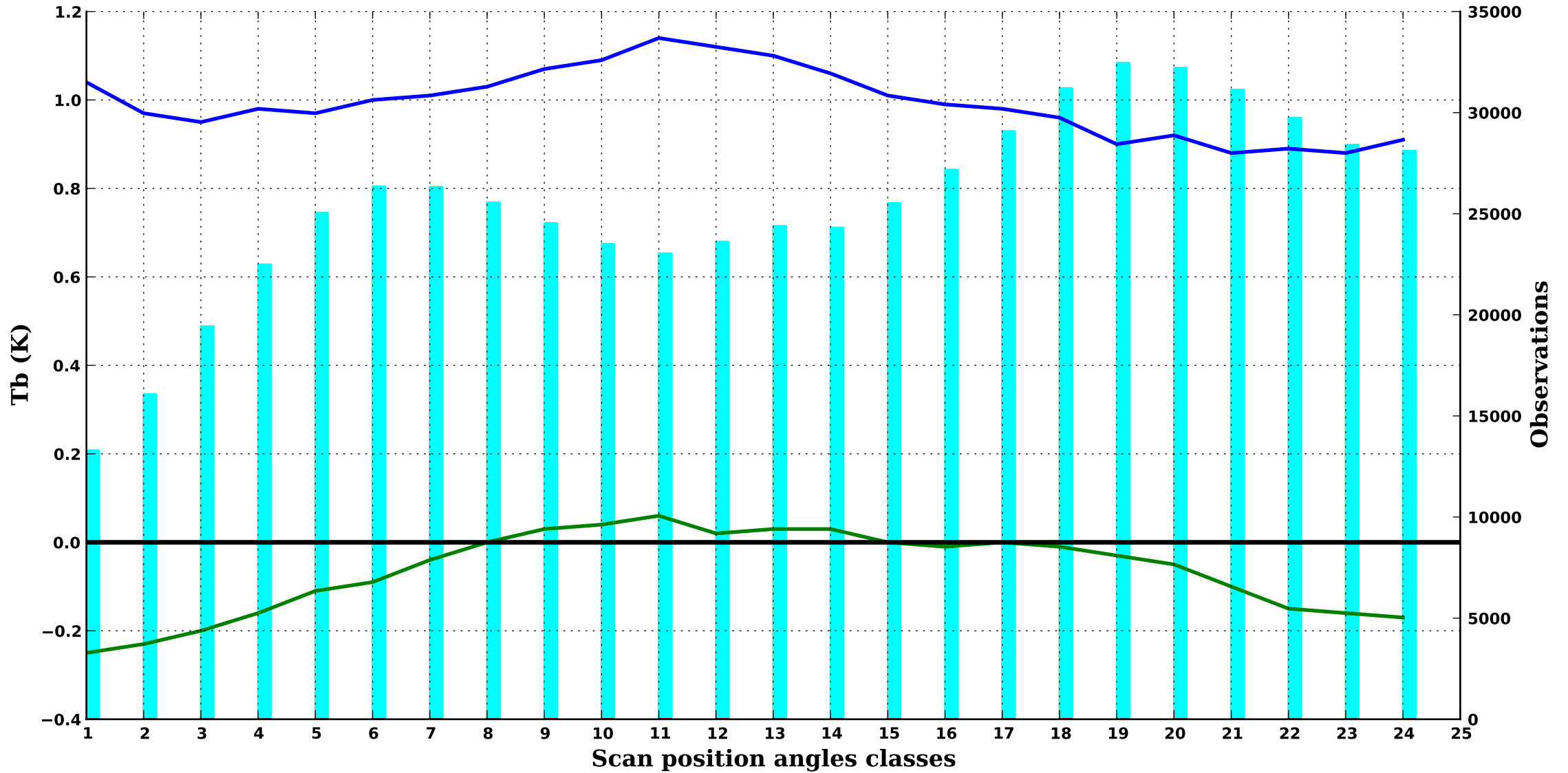
NOAA 20

Period : 202504

cloudy/sea ice

ATMS 21

400 hPa



cloudy/sea ice

ATMS 22

350 hPa

