

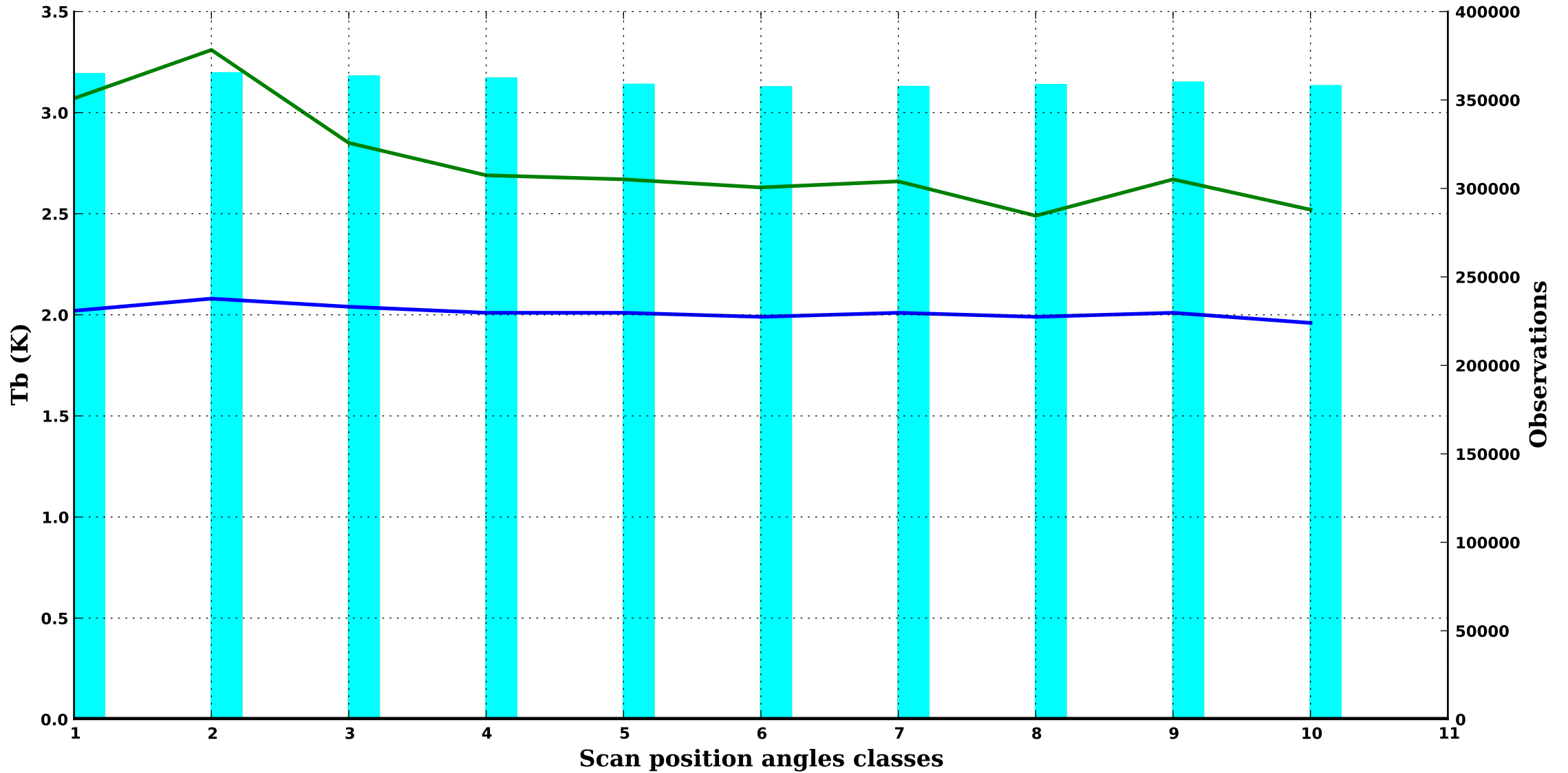
DMSP F17

Period : 202504

clear/

SSMI/S 1

50.3H GHz, 1000 hPa



— bias obs-guess — std obs-guess — nb obs — nb rejects — nb gross errors

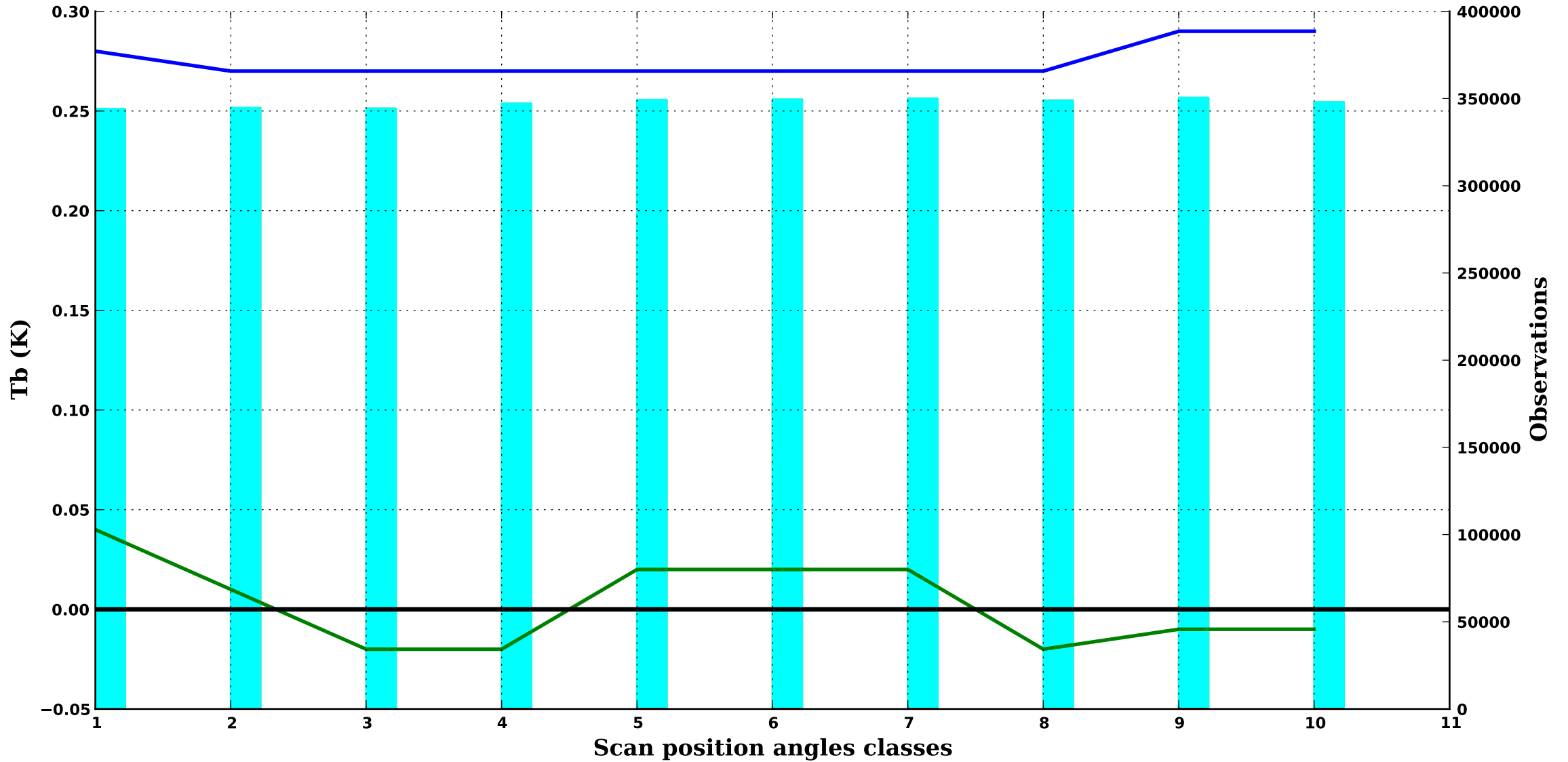
DMSP F17

Period : 202504

clear/

SSMI/S 2

52.8H GHz, 1000 hPa

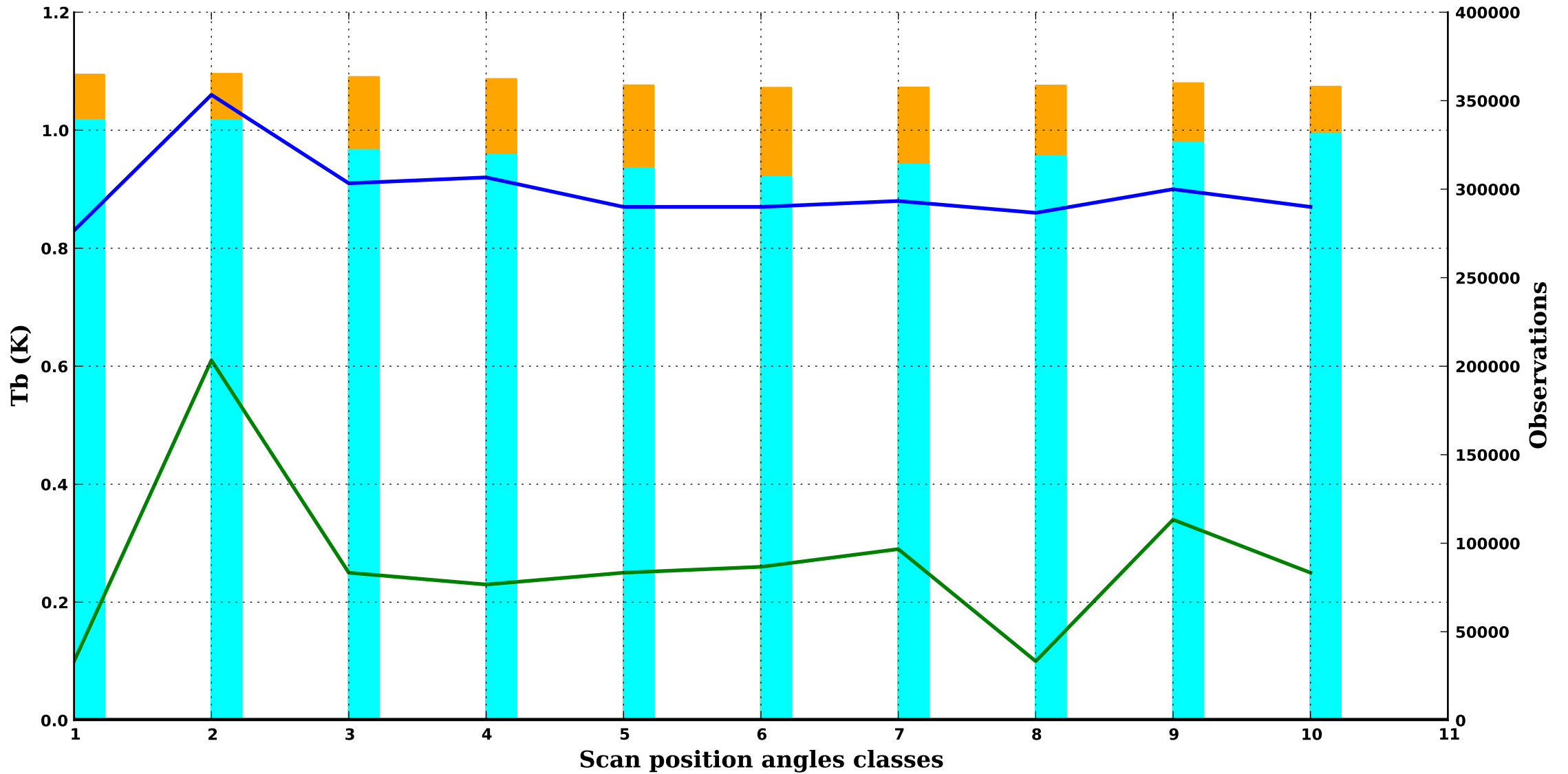


— bias obs-guess    — std obs-guess    ■ nb obs    ■ nb rejects    ■ nb gross errors

clear/

SSMI/S 3

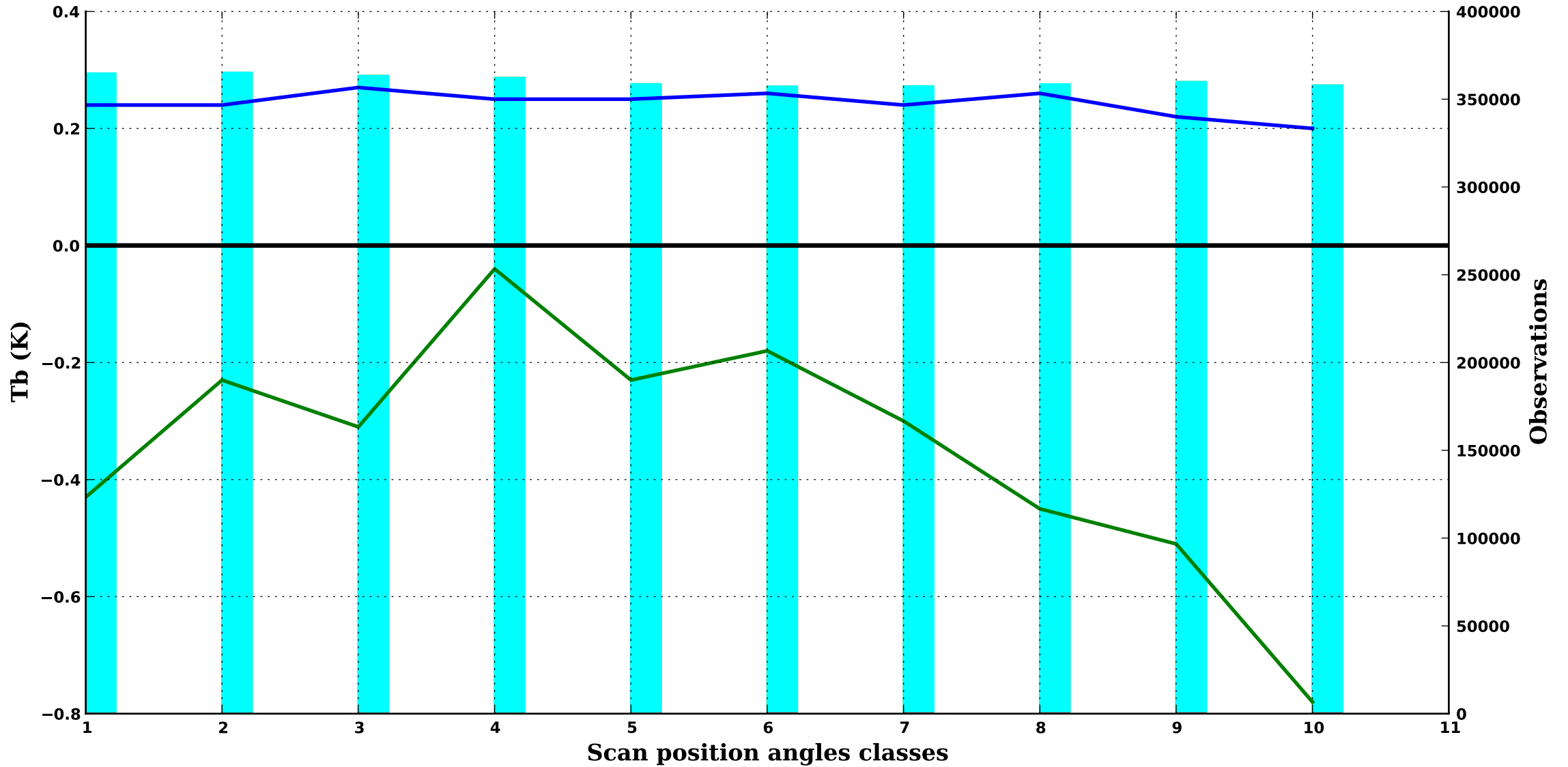
53.6H GHz, 700 hPa



clear/

SSMI/S 4

54.4H GHz, 400 hPa



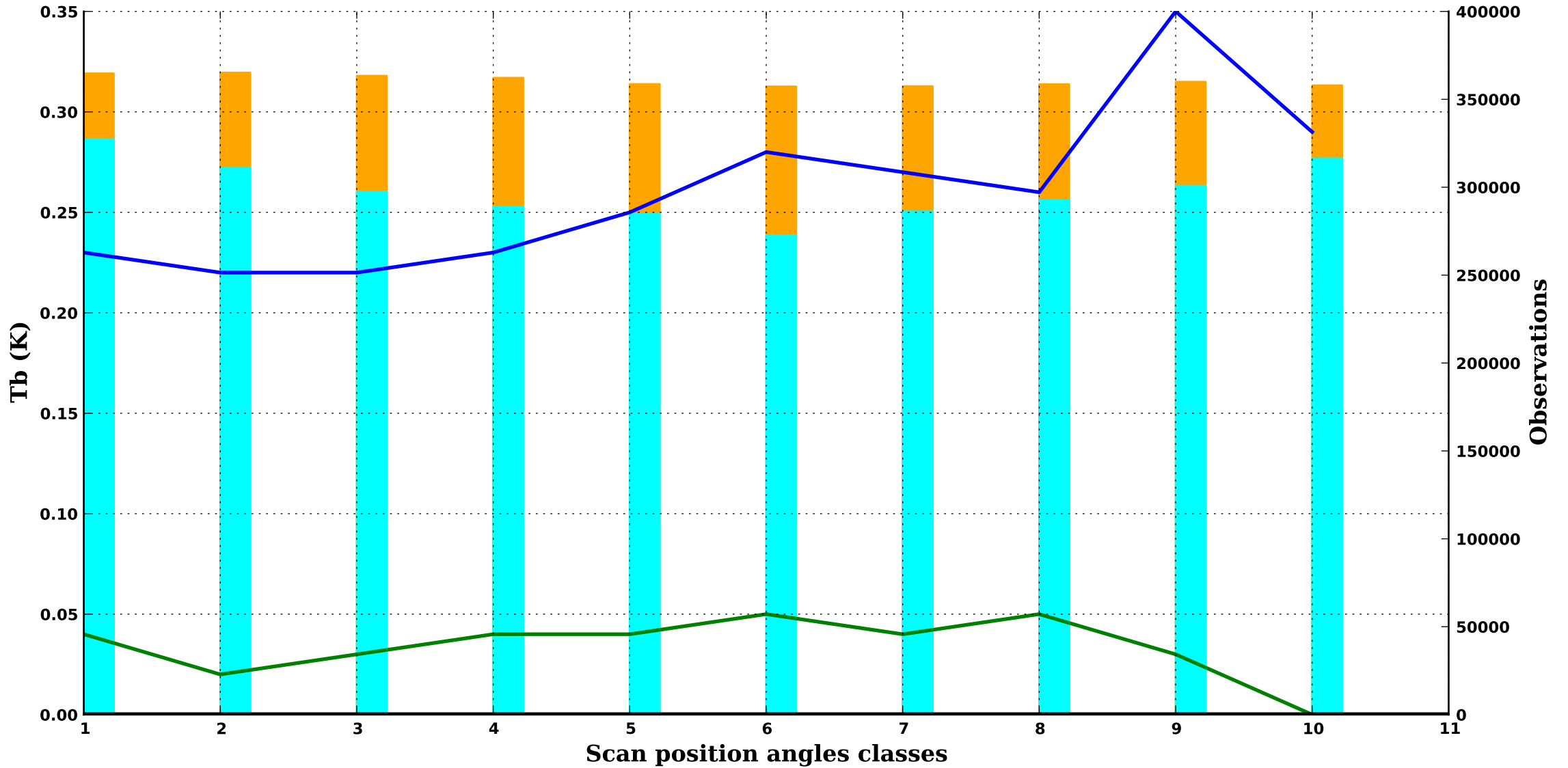
DMSP F17

Period : 202504

clear/

SSMI/S 5

55.5H GHz, 200 hPa

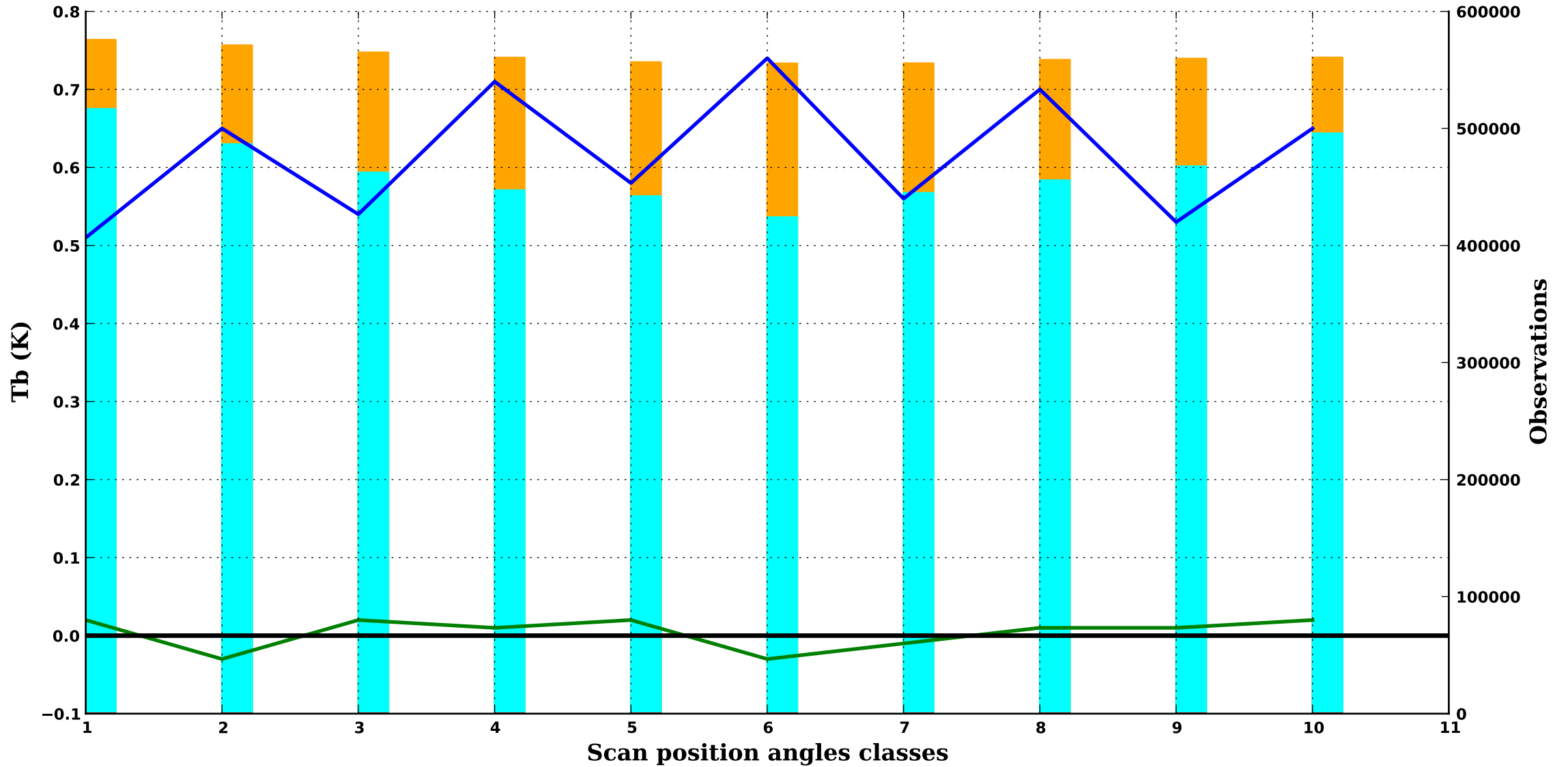


— bias obs-guess    — std obs-guess    ■ nb obs    ■ nb rejects    ■ nb gross errors

clear/

SSMI/S 6

57.3R GHz, 90 hPa



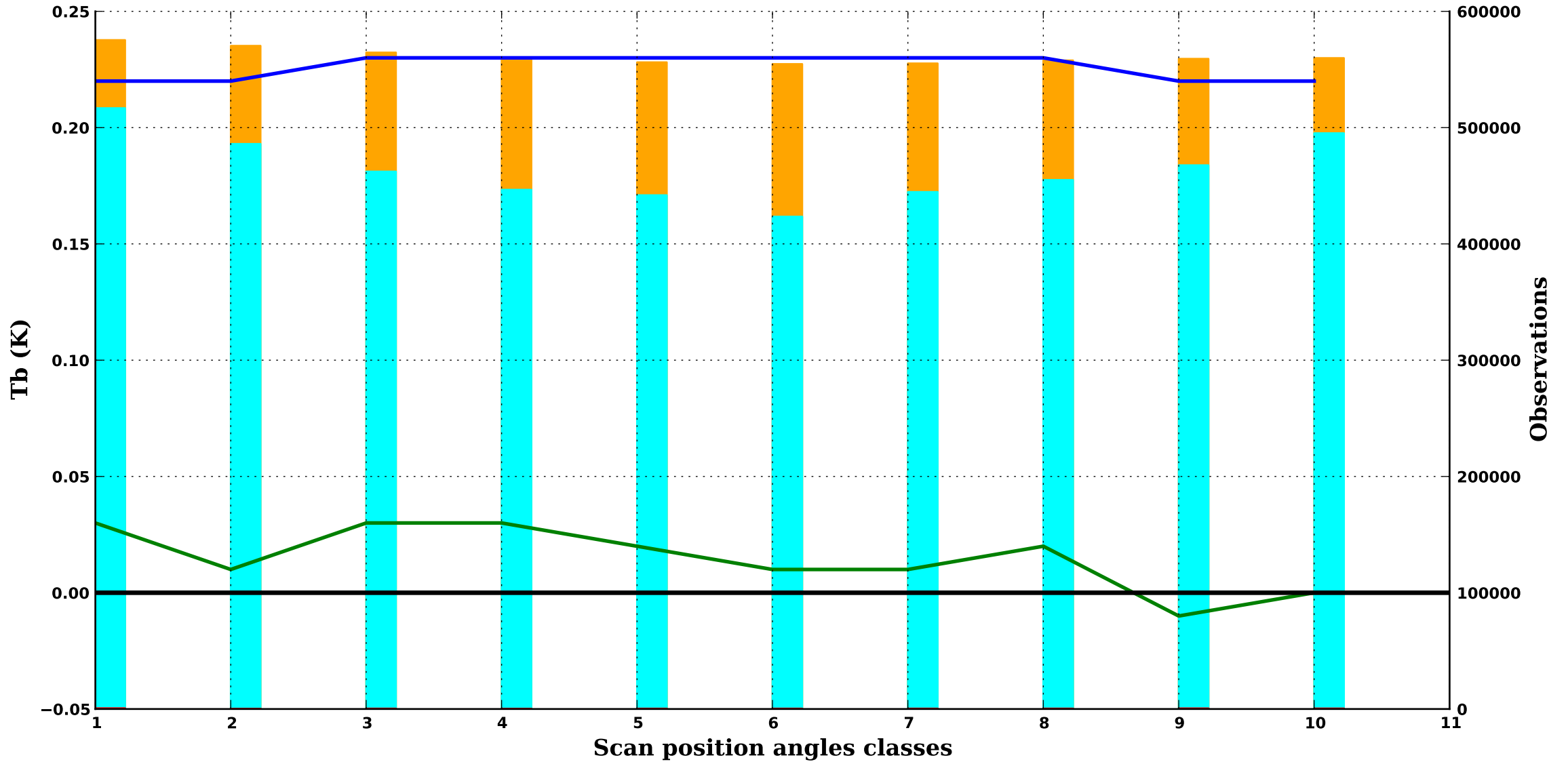
DMSP F17

Period : 202504

clear/

SSMI/S 7

59.4R GHz, 50 hPa



— bias obs-guess    — std obs-guess    ■ nb obs    ■ nb rejects    ■ nb gross errors

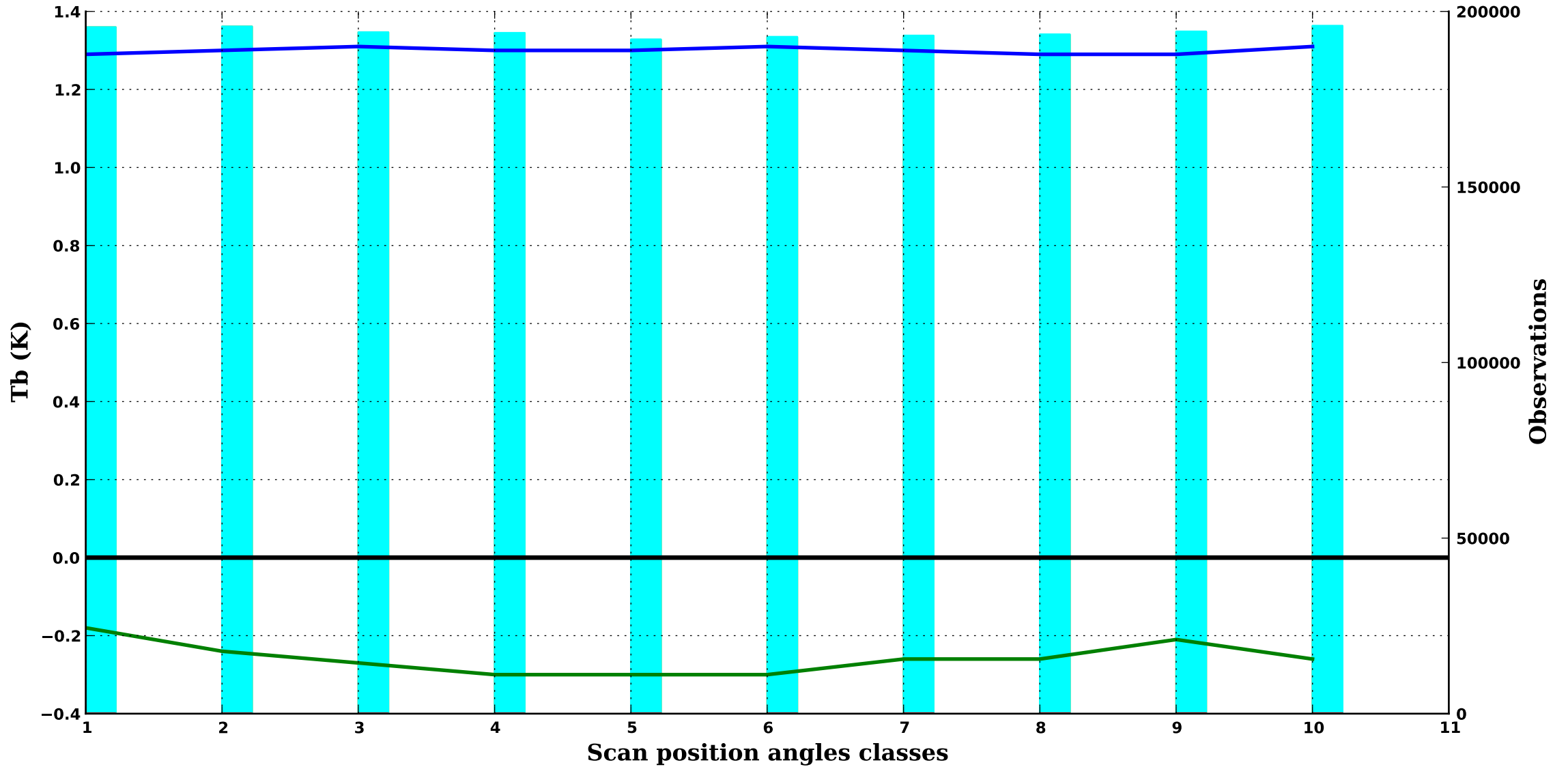
DMSP F17

Period : 202504

clear/

SSMI/S 8

150.0H GHz, 1000 hPa



— bias obs-guess    — std obs-guess    ■ nb obs    ■ nb rejects    ■ nb gross errors



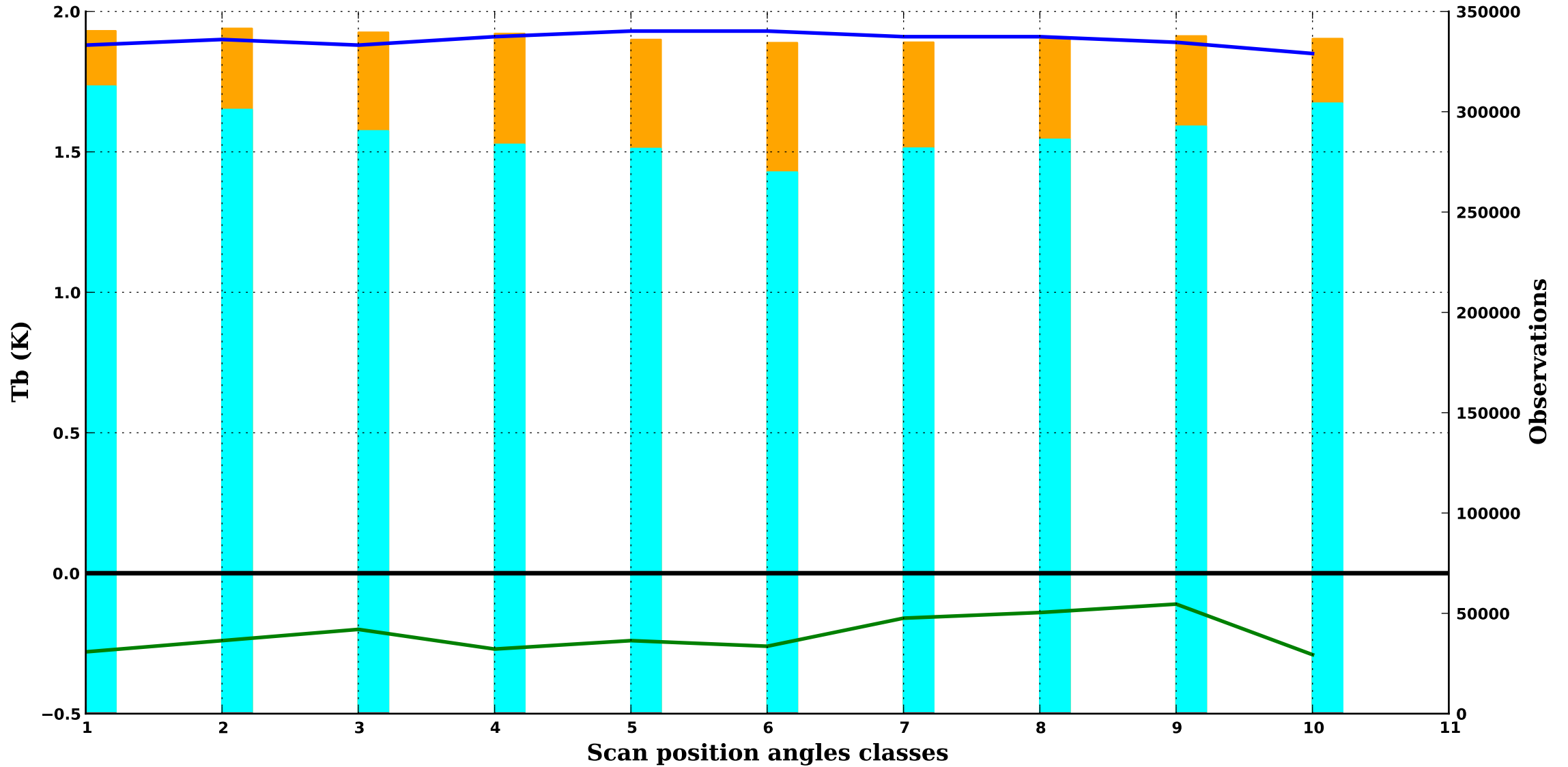
DMSP F17

Period : 202504

clear/

SSMI/S 9

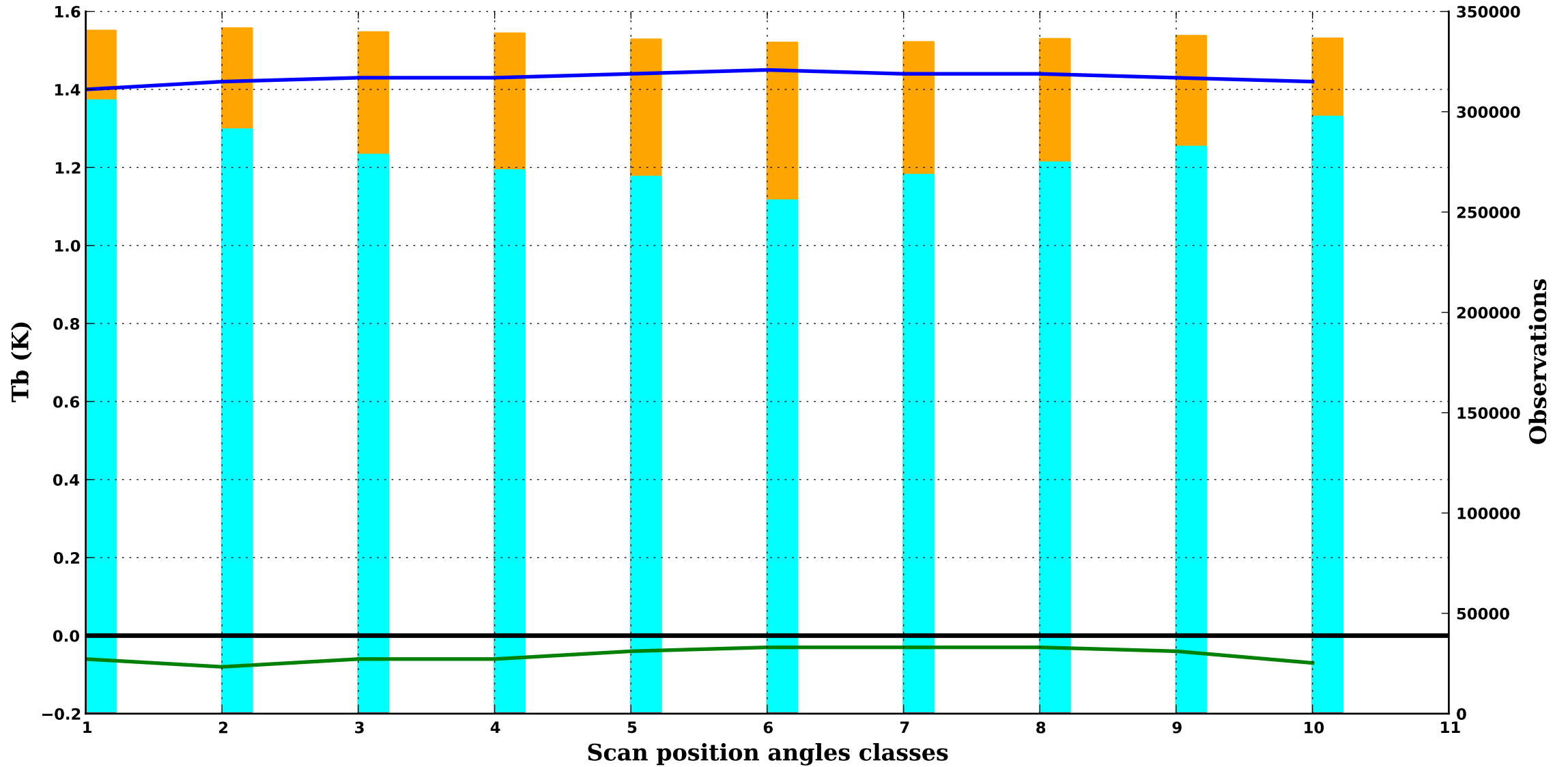
183.3H GHz, 700 hPa



clear/

SSMI/S 10

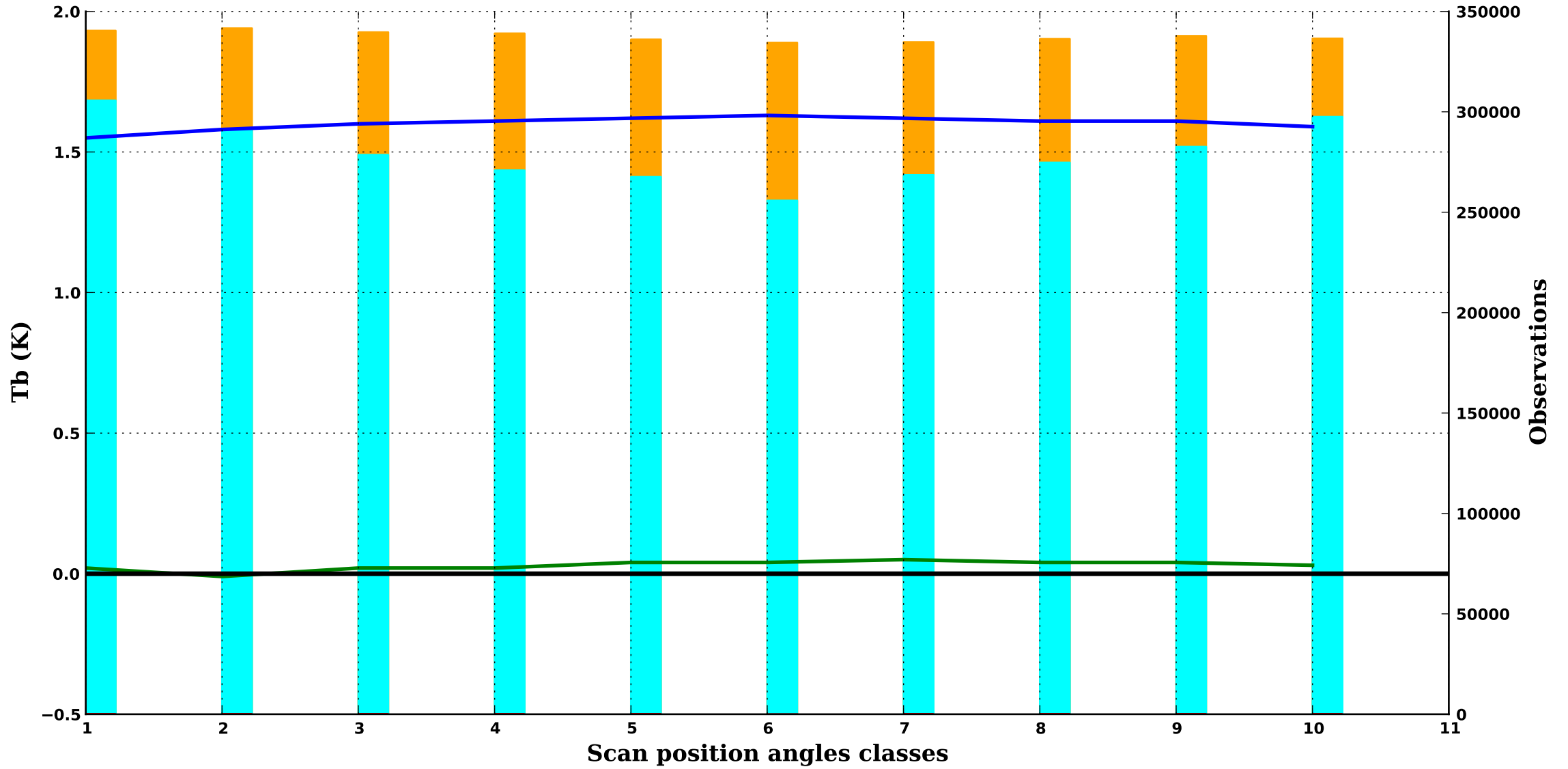
183.3H GHz, 500 hPa



clear/

SSMI/S 11

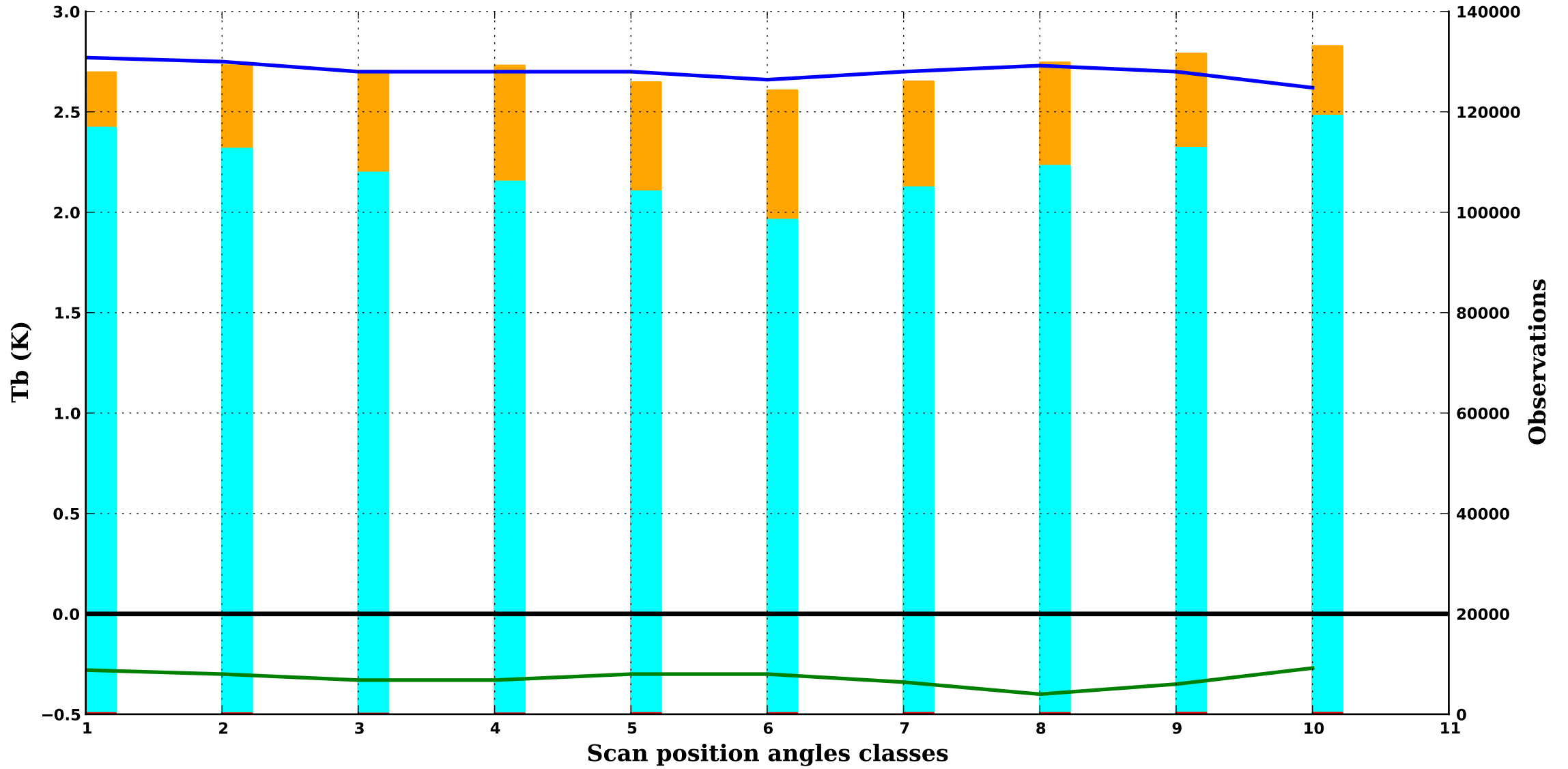
183.3H GHz, 350 hPa



clear/

SSMI/S 12

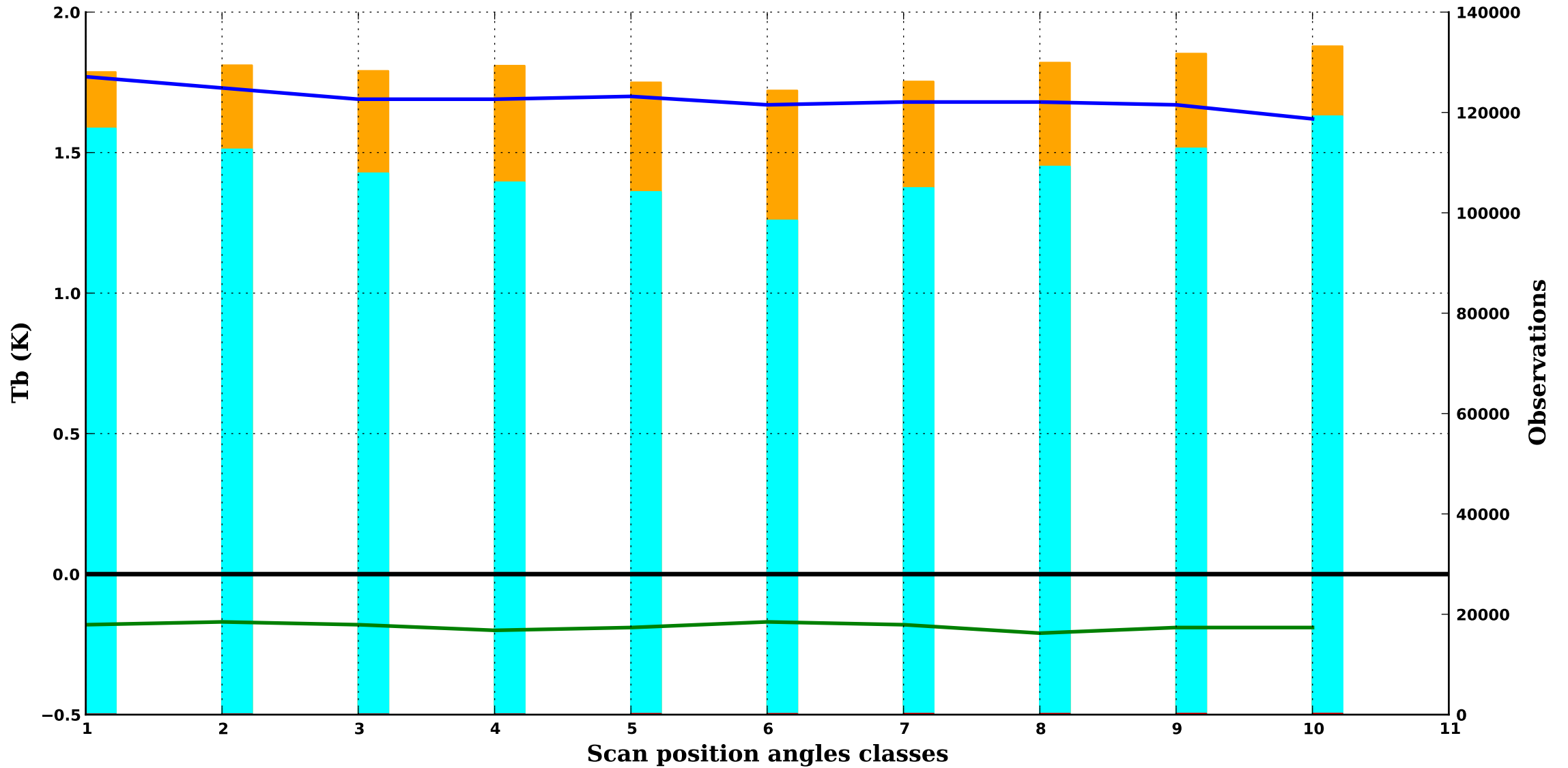
19.4H GHz, 1000 hPa



clear/

SSMI/S 13

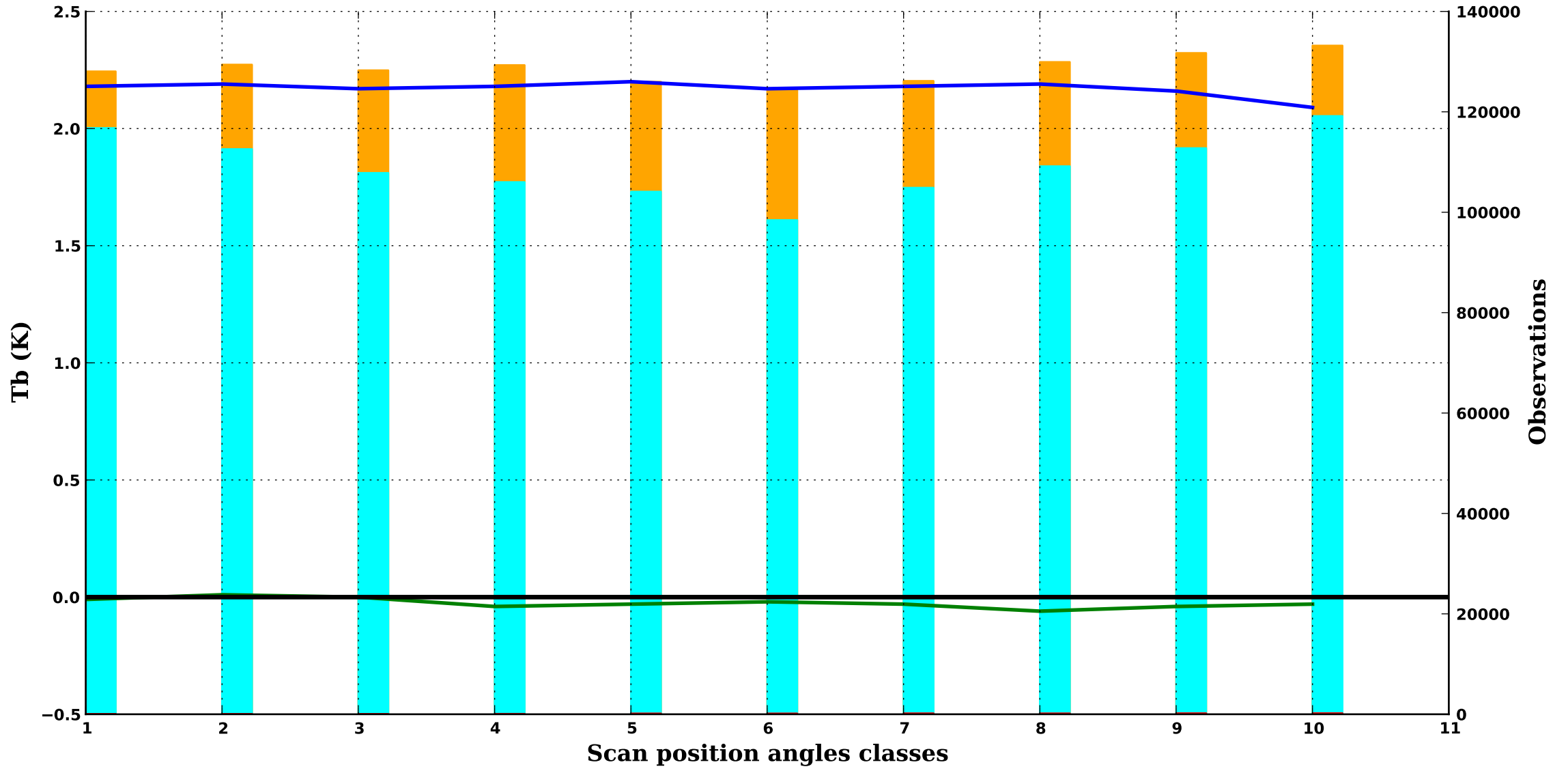
19.4V GHz, 1000 hPa



clear/

SSMI/S 14

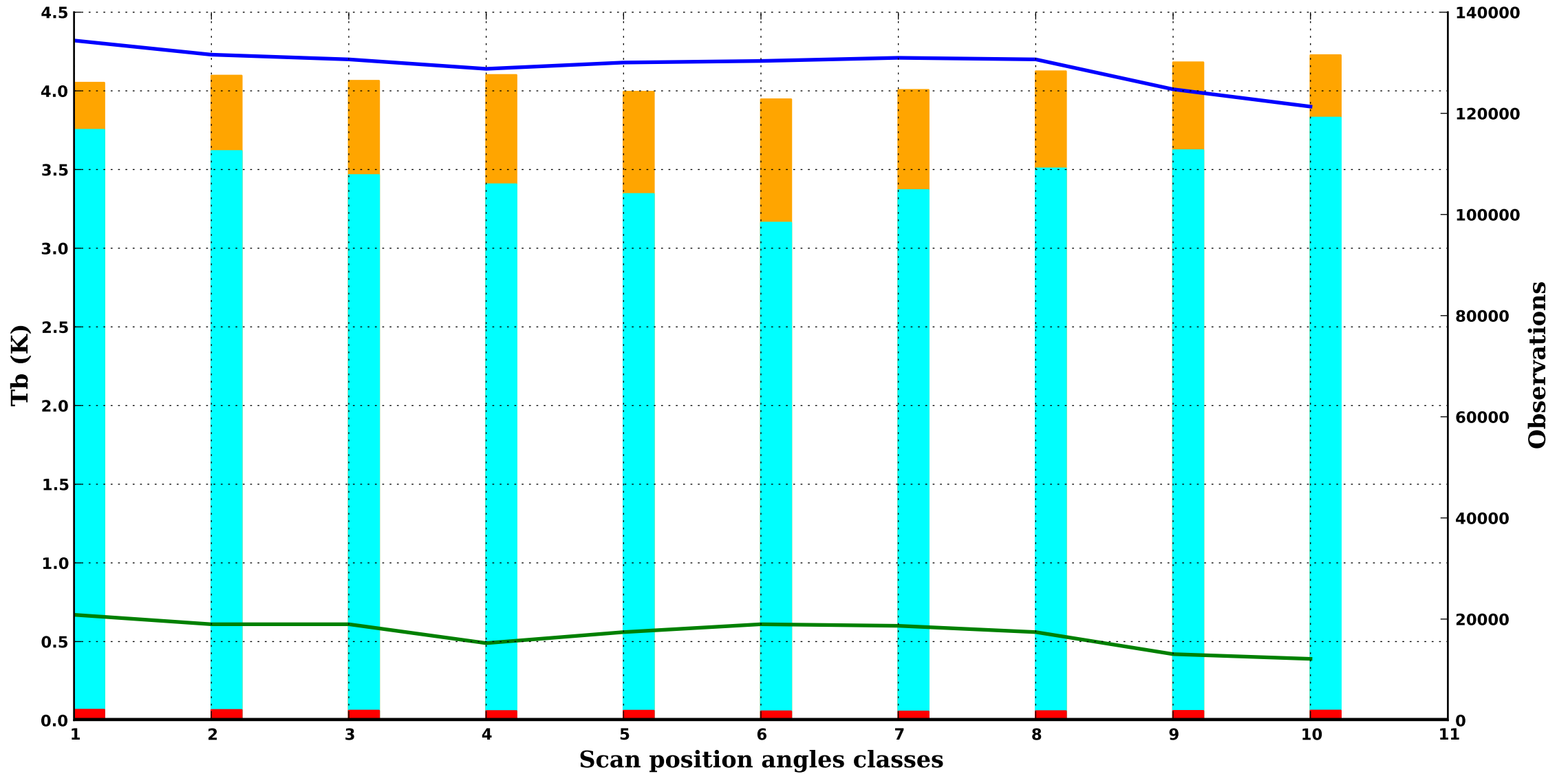
22.2V GHz, 1000 hPa



clear/

SSMI/S 15

37.0H GHz, 1000 hPa



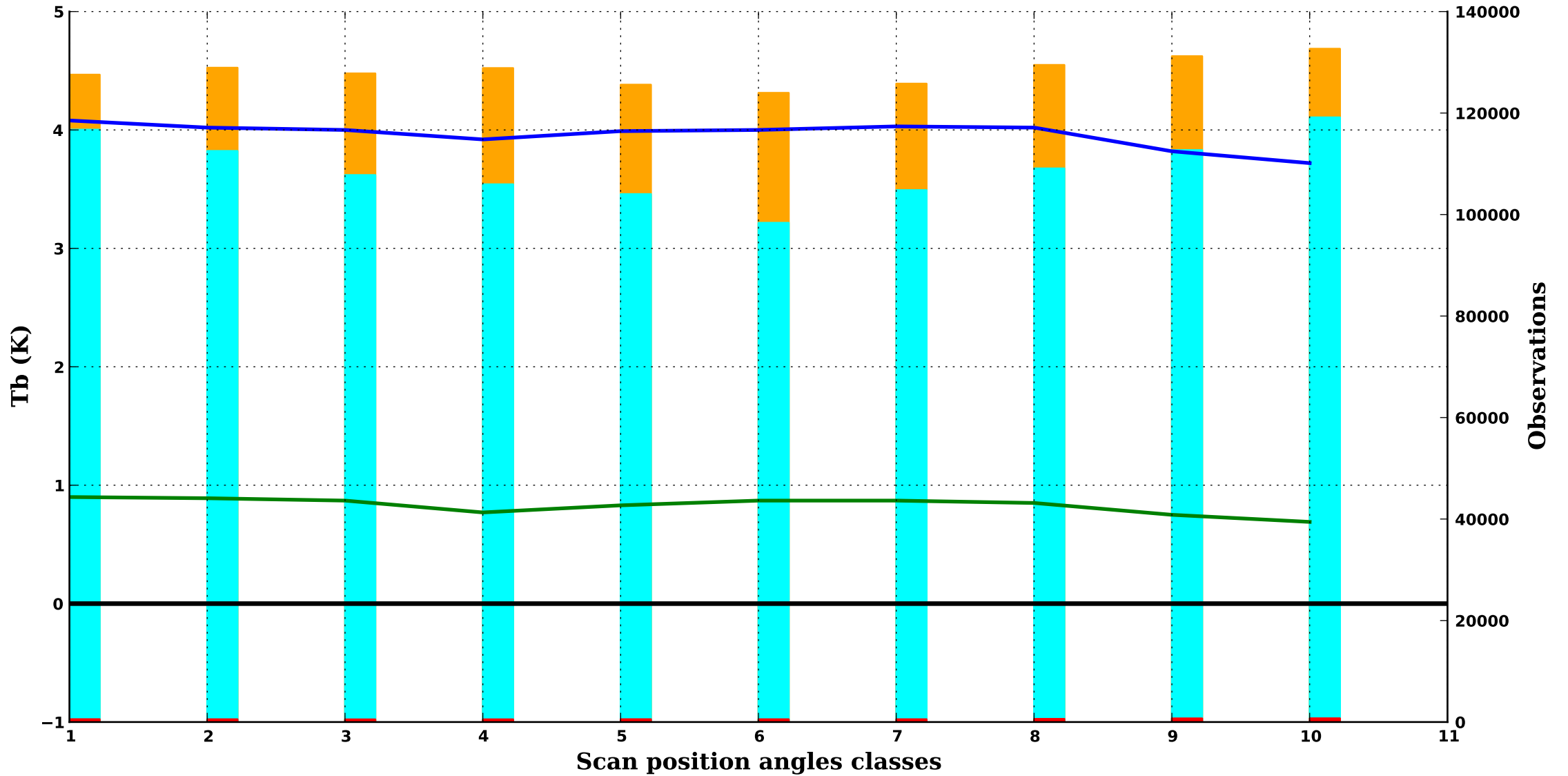
DMSP F17

Period : 202504

clear/

SSMI/S 16

37.0V GHz, 1000 hPa





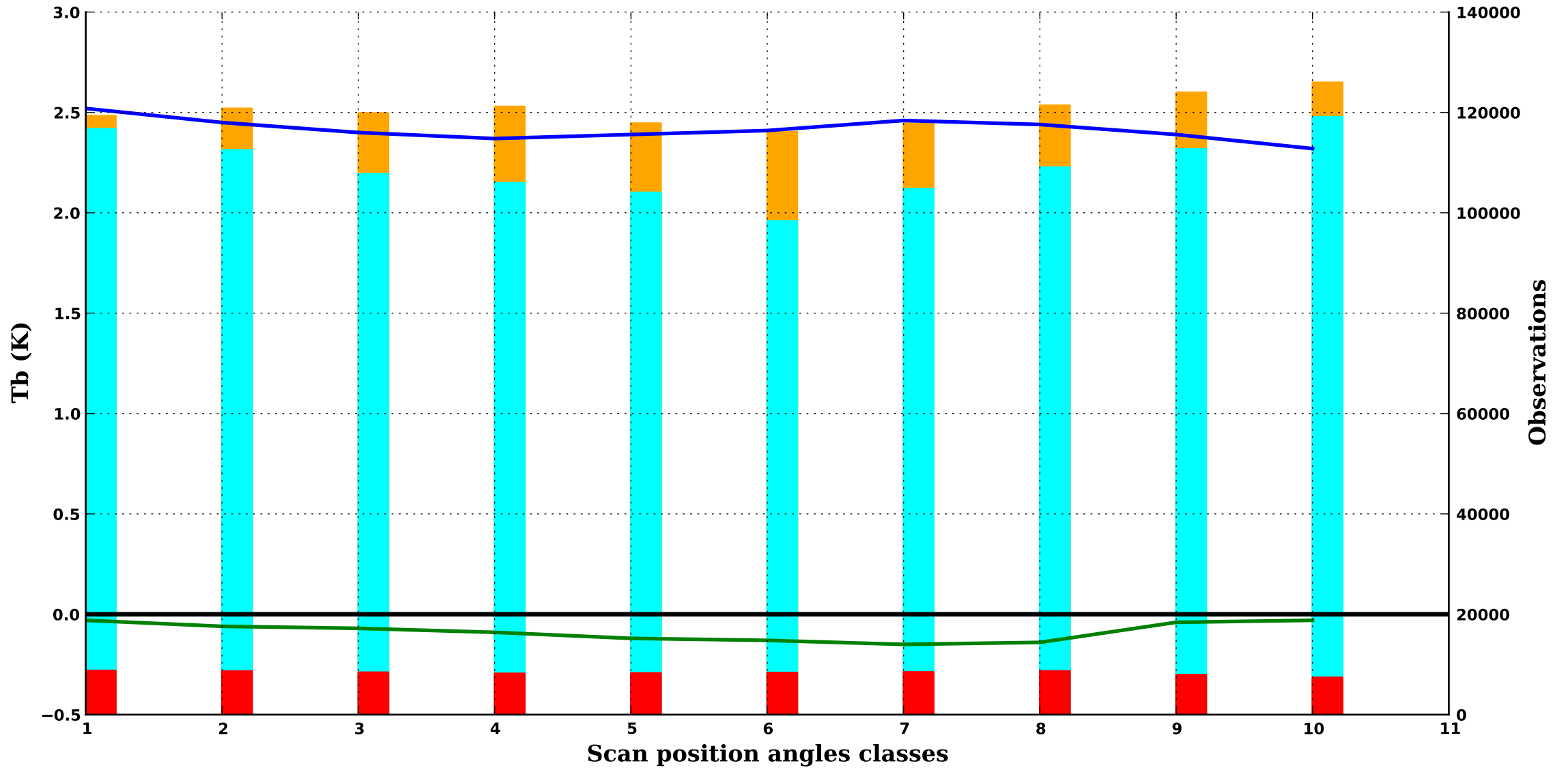
DMSP F17

Period : 202504

clear/

SSMI/S 17

91.7V GHz, 1000 hPa



— bias obs-guess    — std obs-guess    ■ nb obs    ■ nb rejects    ■ nb gross errors

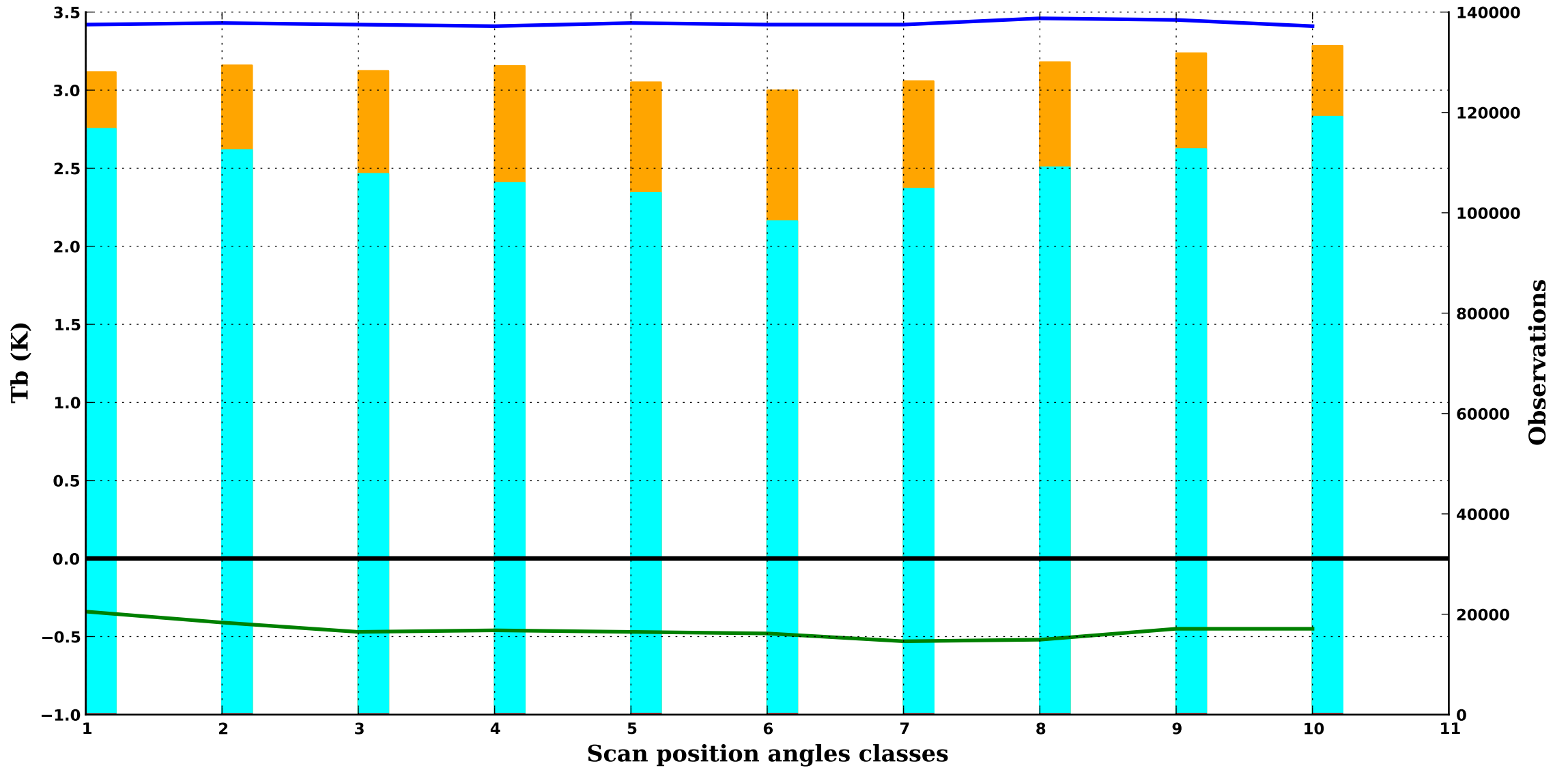
DMSP F17

Period : 202504

clear/

SSMI/S 18

91.7H GHz, 1000 hPa



— bias obs-guess    — std obs-guess    ■ nb obs    ■ nb rejects    ■ nb gross errors