

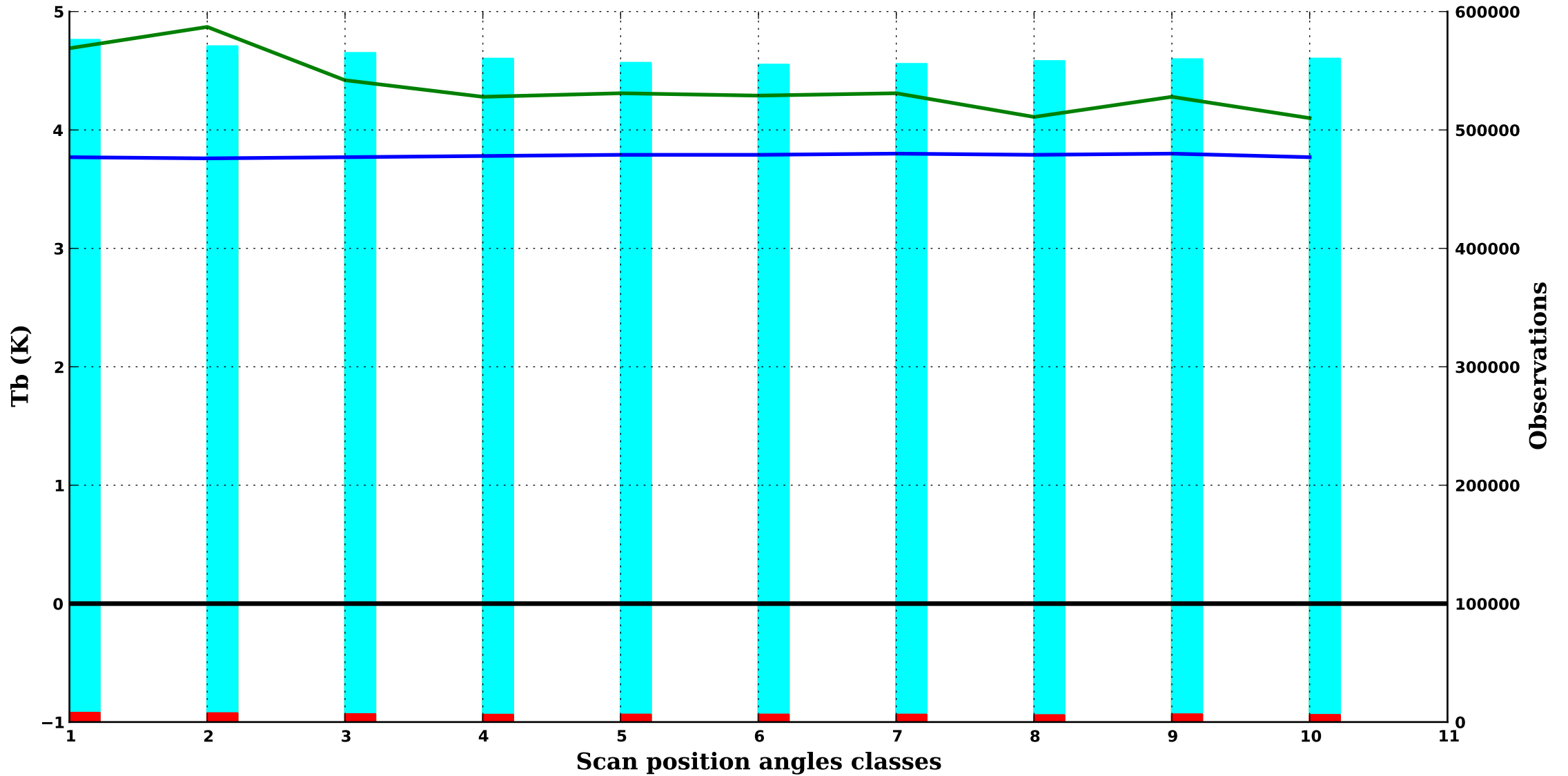
DMSP F17

Period : 202504

/sea

SSMI/S 1

50.3H GHz, 1000 hPa

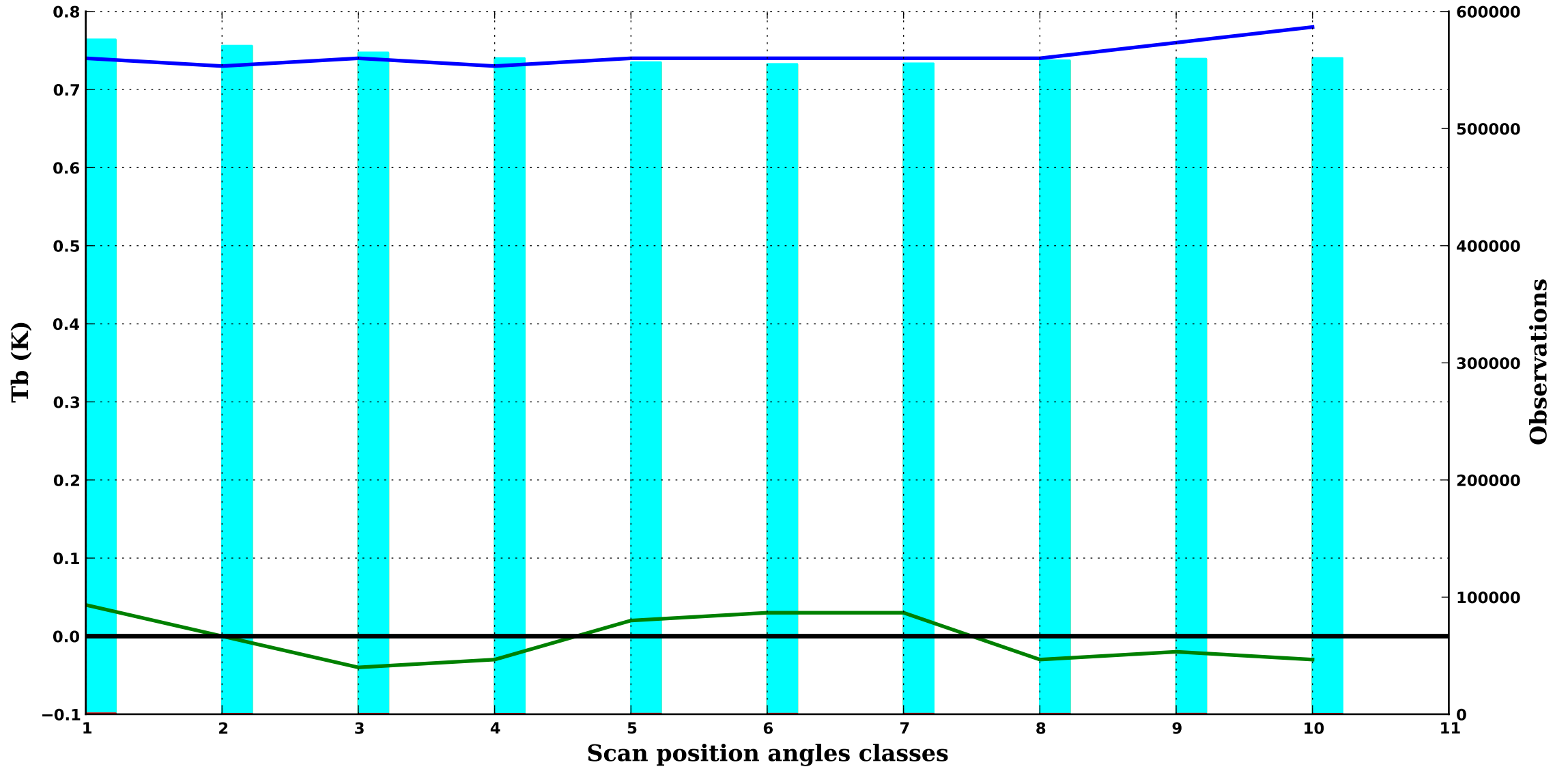


— bias obs-guess    — std obs-guess    ■ nb obs    ■ nb rejects    ■ nb gross errors

/sea

SSMI/S 2

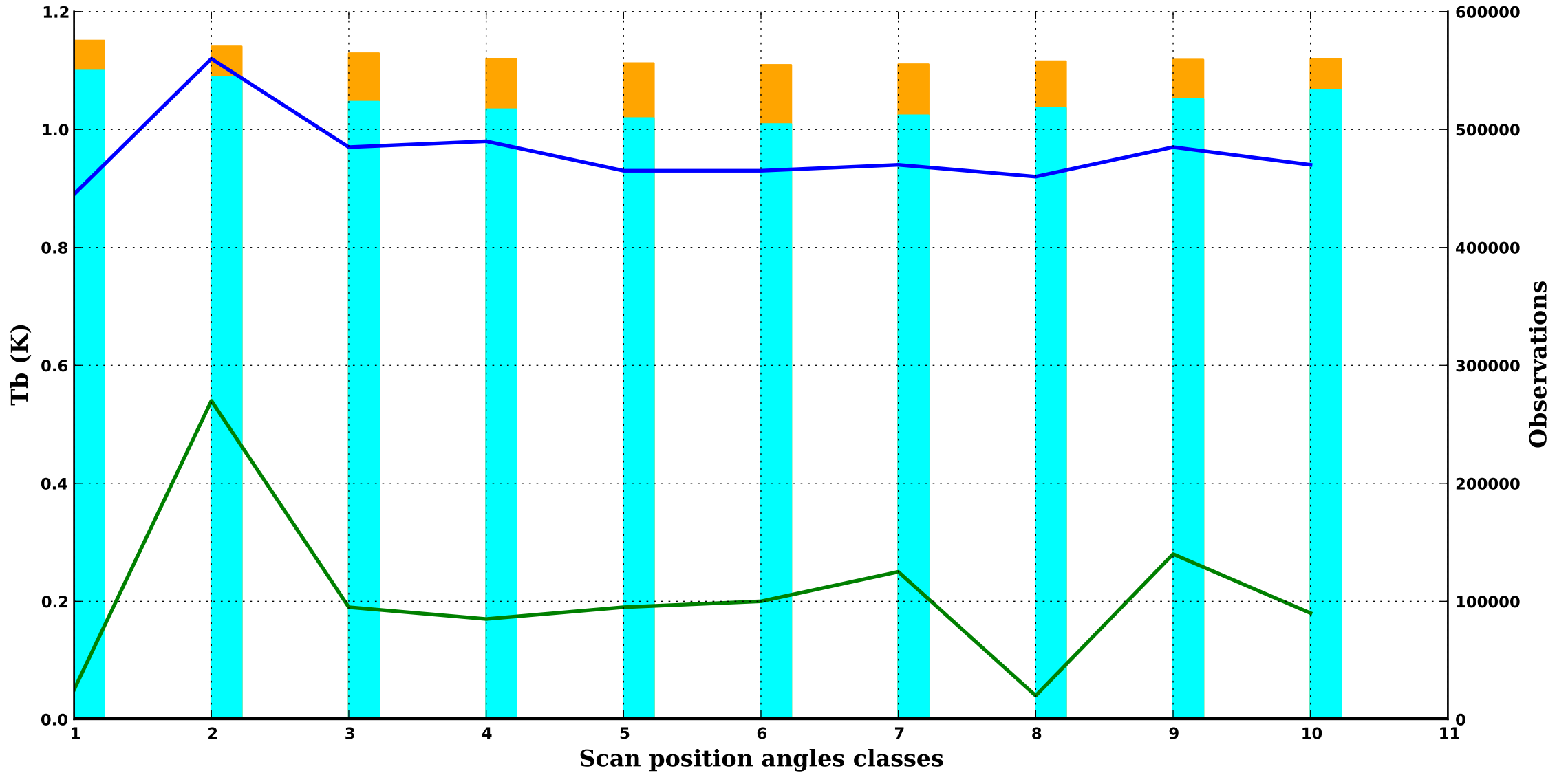
52.8H GHz, 1000 hPa



/sea

SSMI/S 3

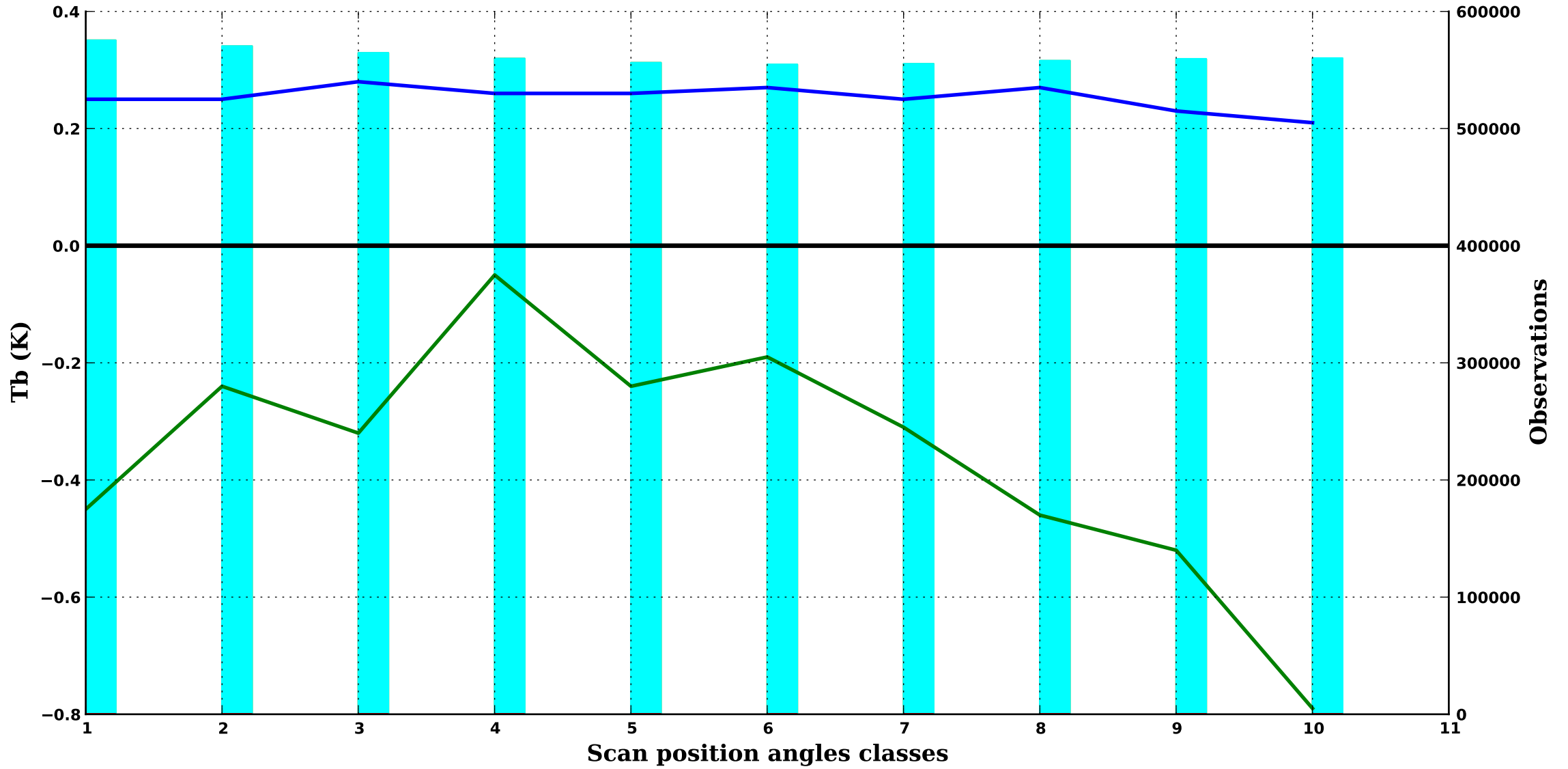
53.6H GHz, 700 hPa



/sea

SSMI/S 4

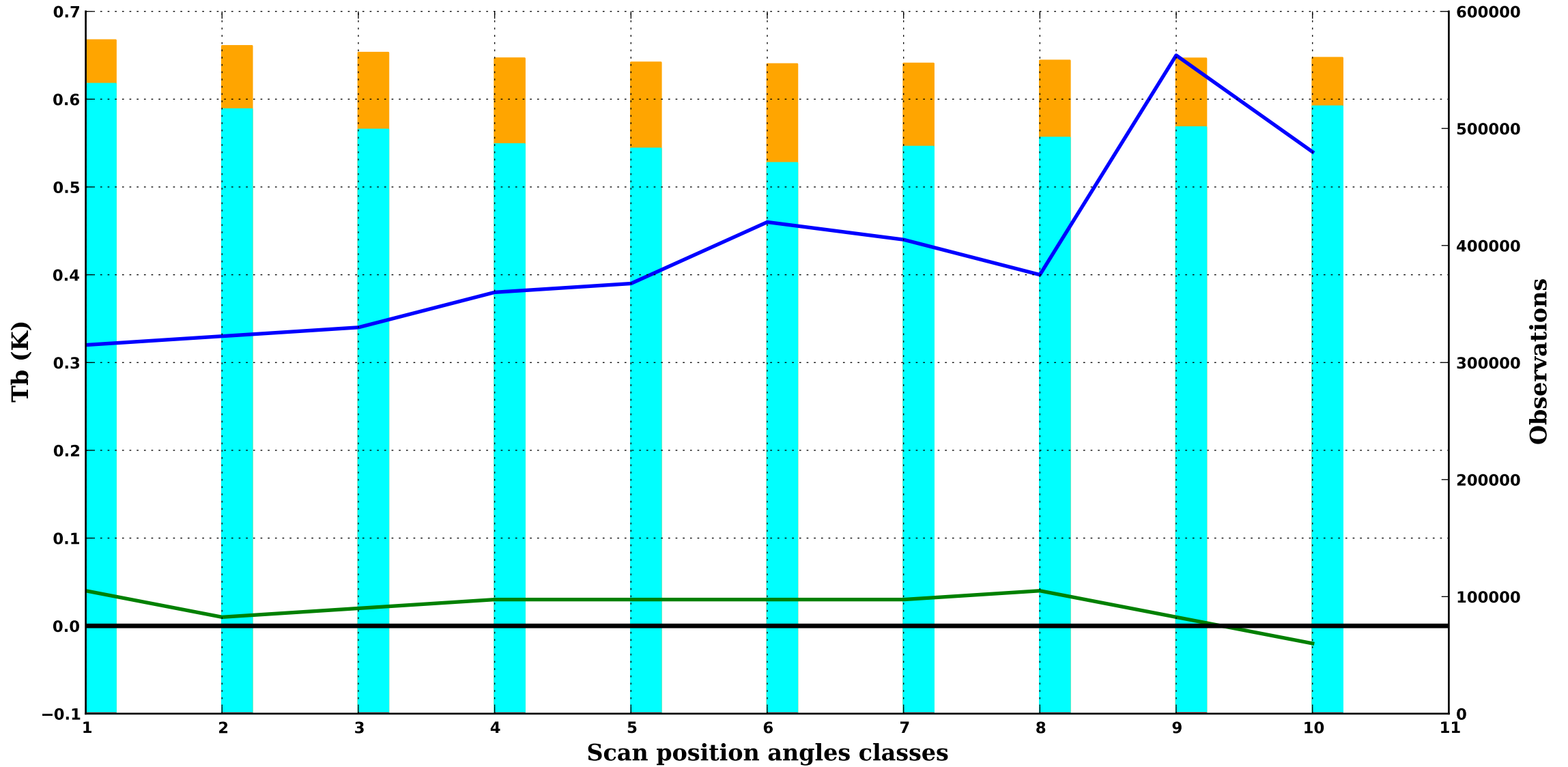
54.4H GHz, 400 hPa



/sea

SSMI/S 5

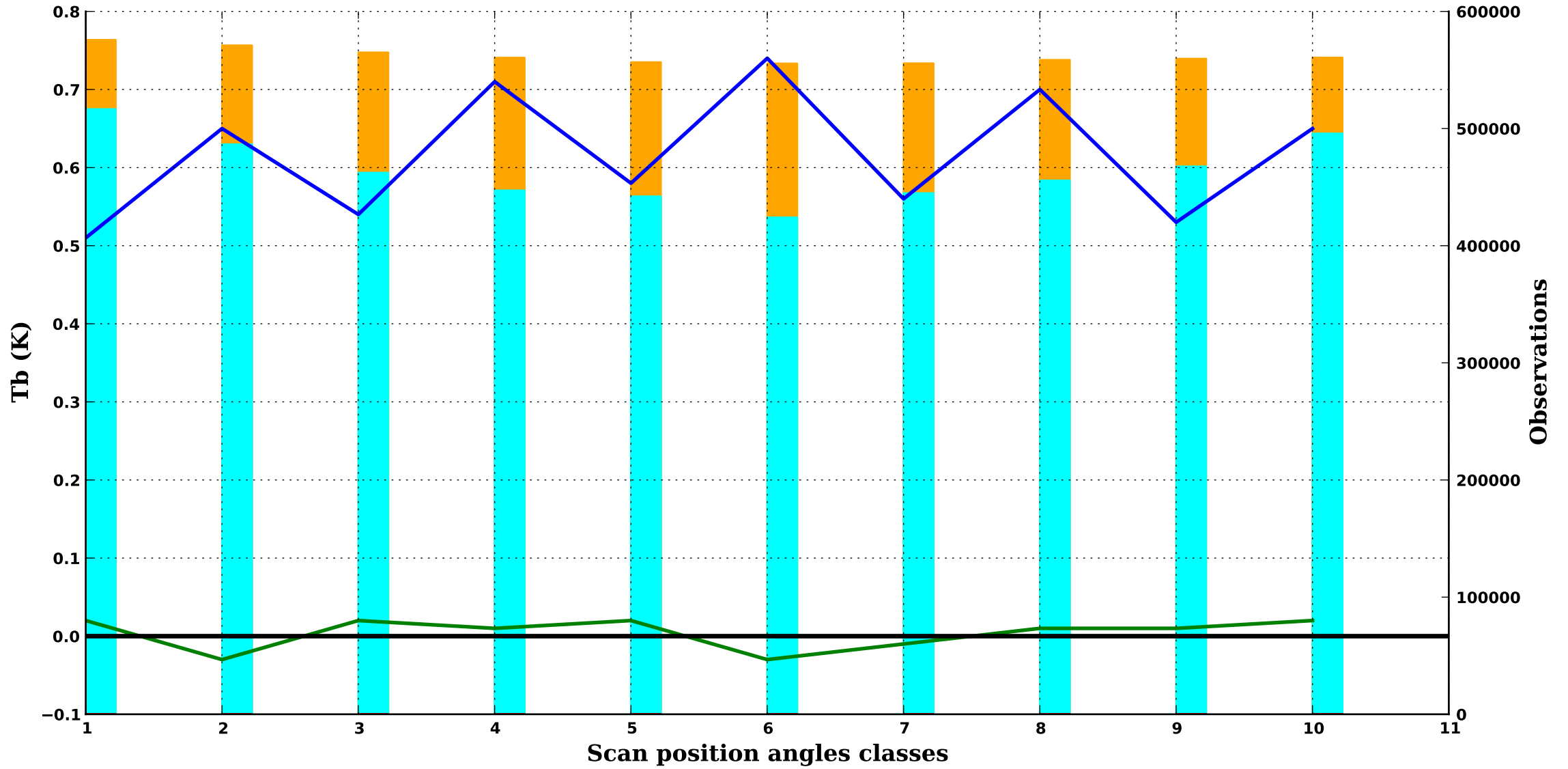
55.5H GHz, 200 hPa



/sea

SSMI/S 6

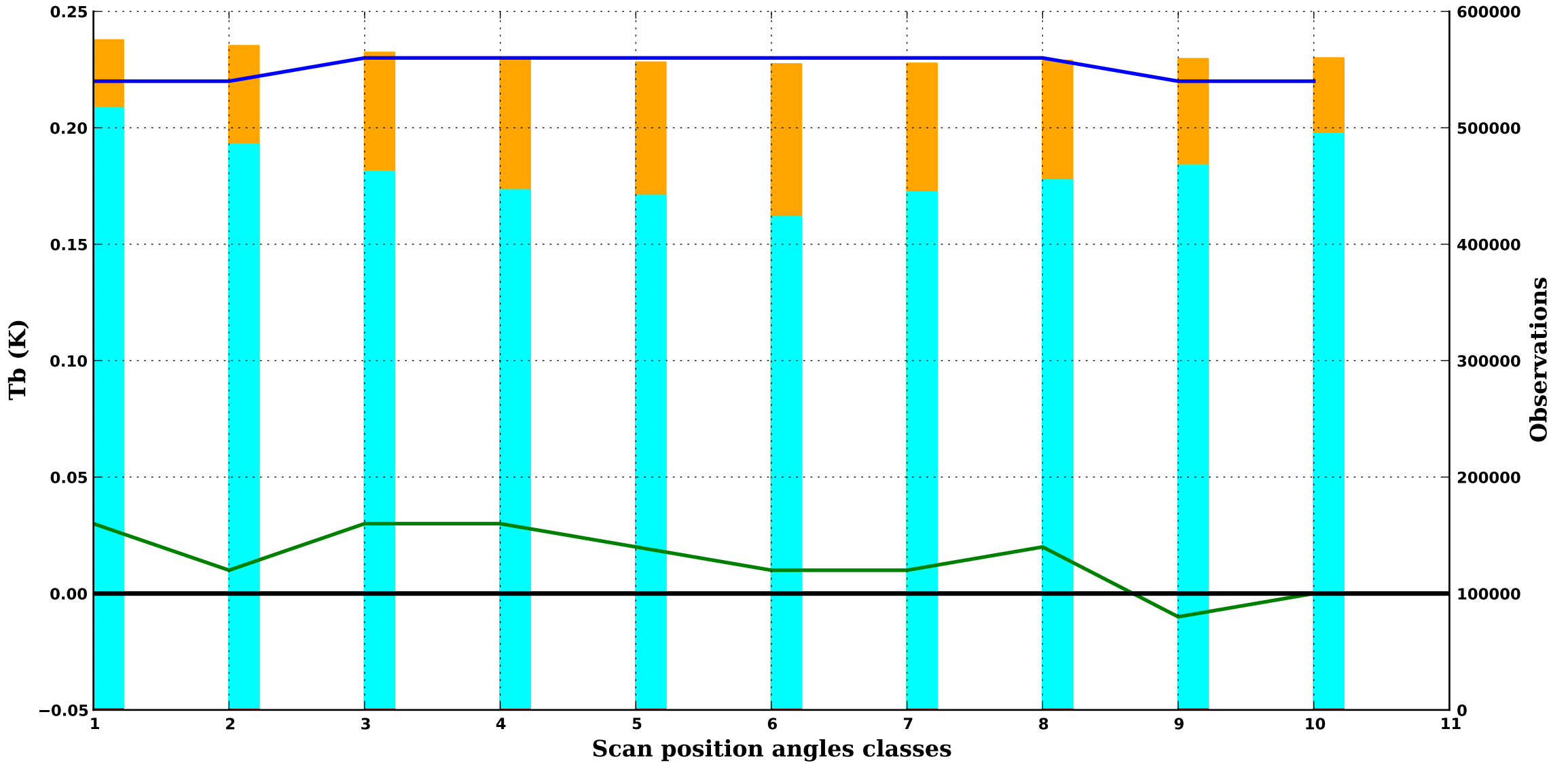
57.3R GHz, 90 hPa



/sea

SSMI/S 7

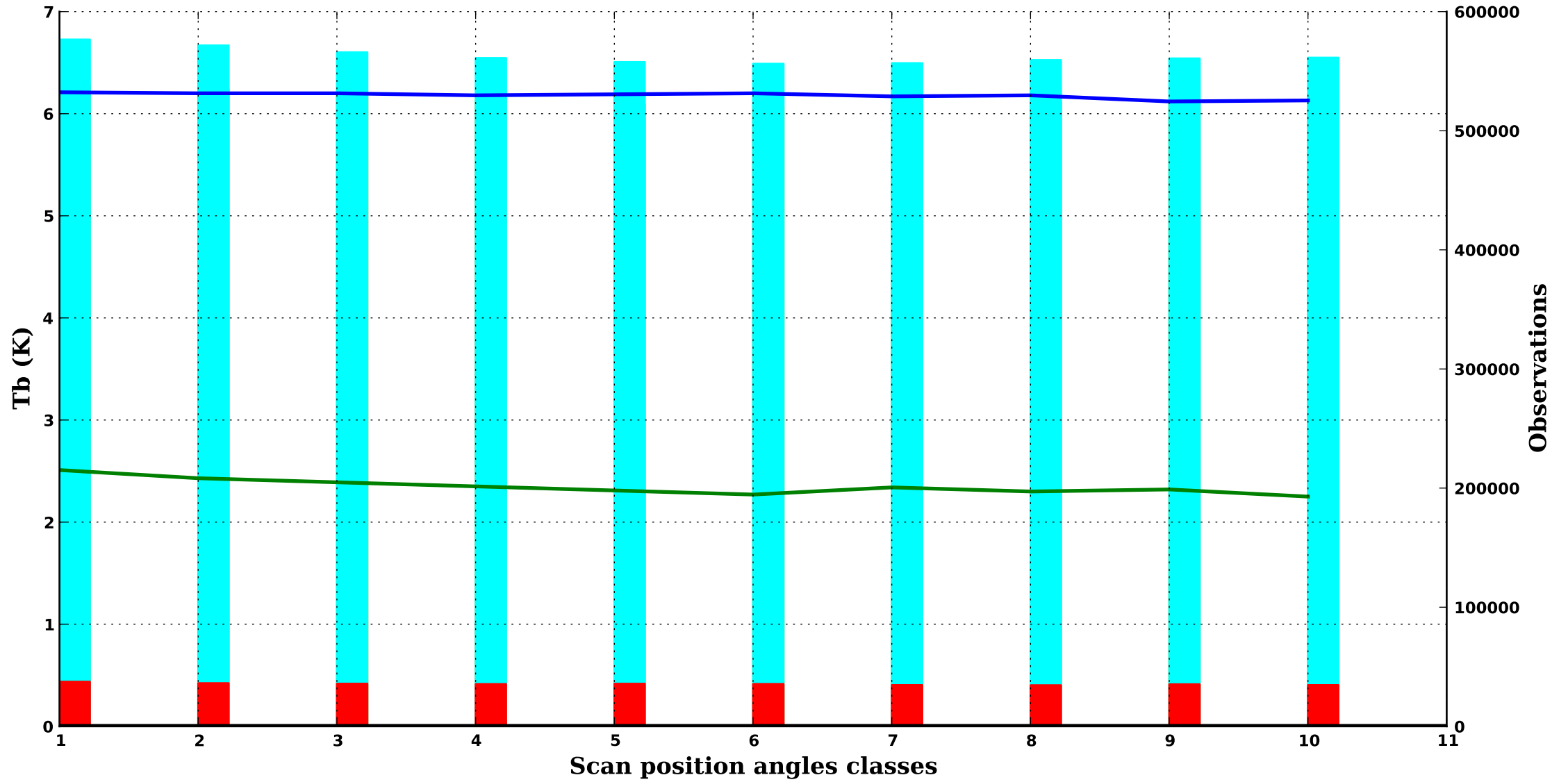
59.4R GHz, 50 hPa



/sea

SSMI/S 8

150.0H GHz, 1000 hPa

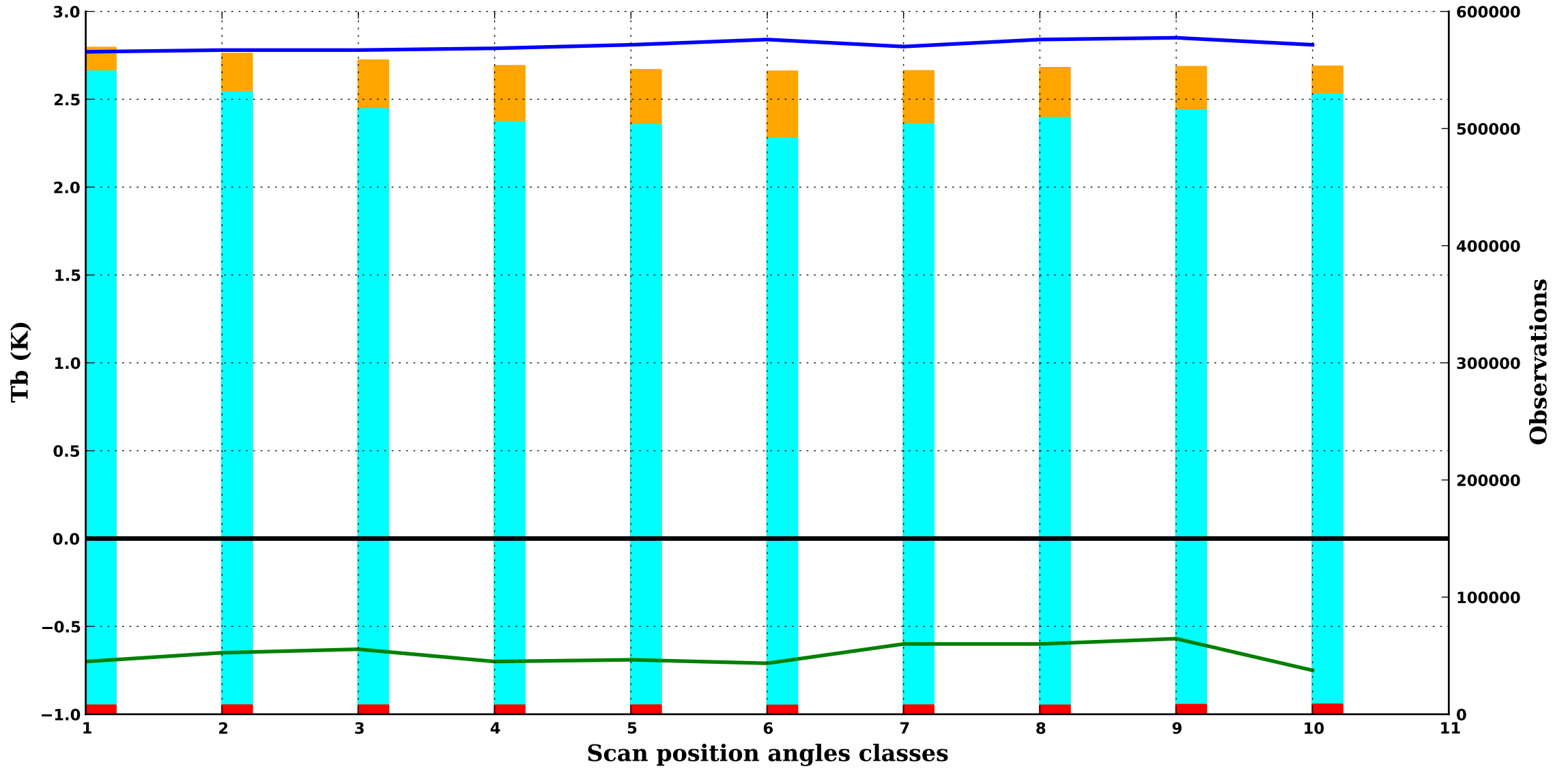




/sea

SSMI/S 9

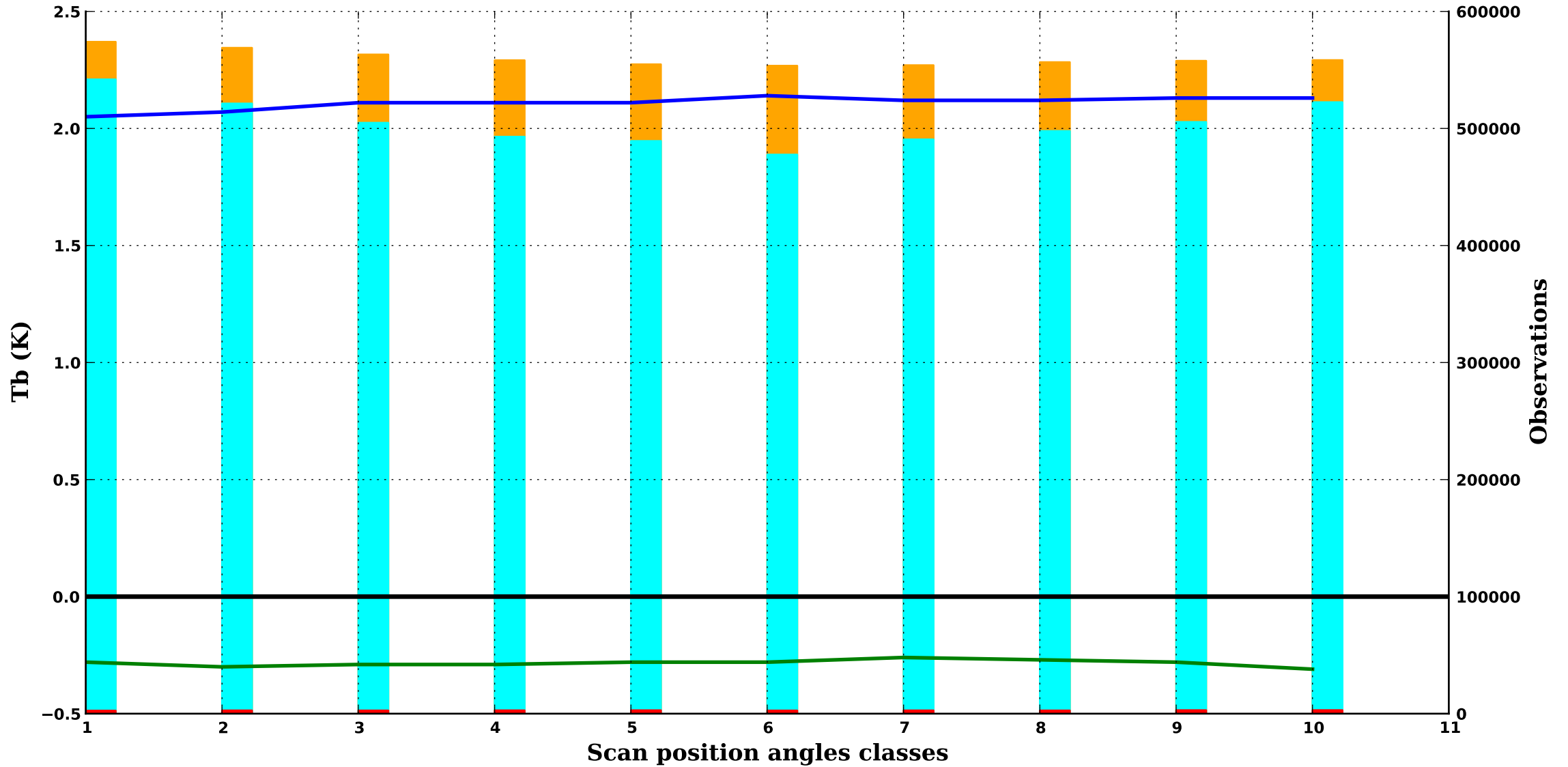
183.3H GHz, 700 hPa



/sea

SSMI/S 10

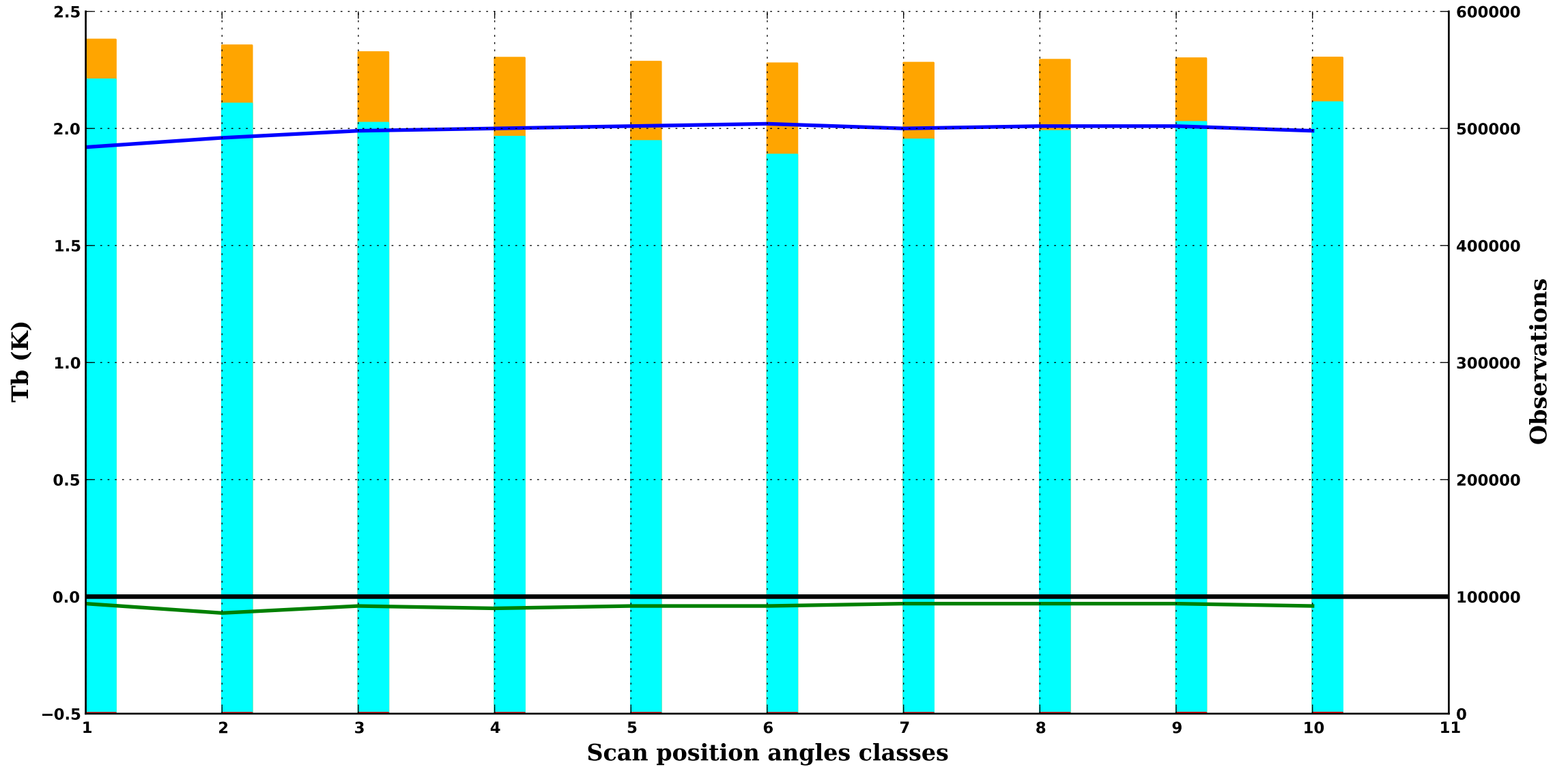
183.3H GHz, 500 hPa



/sea

SSMI/S 11

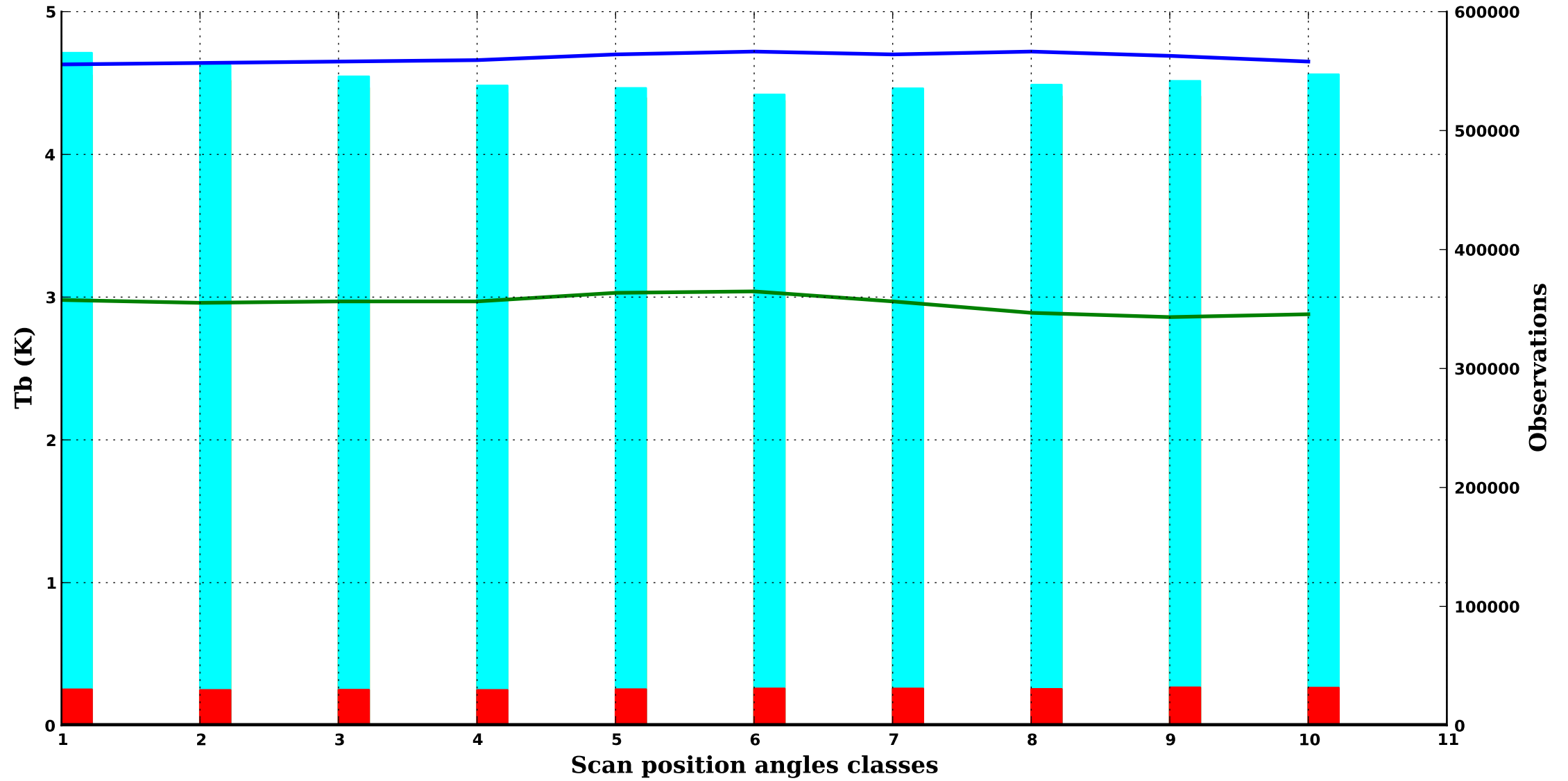
183.3H GHz, 350 hPa



/sea

SSMI/S 12

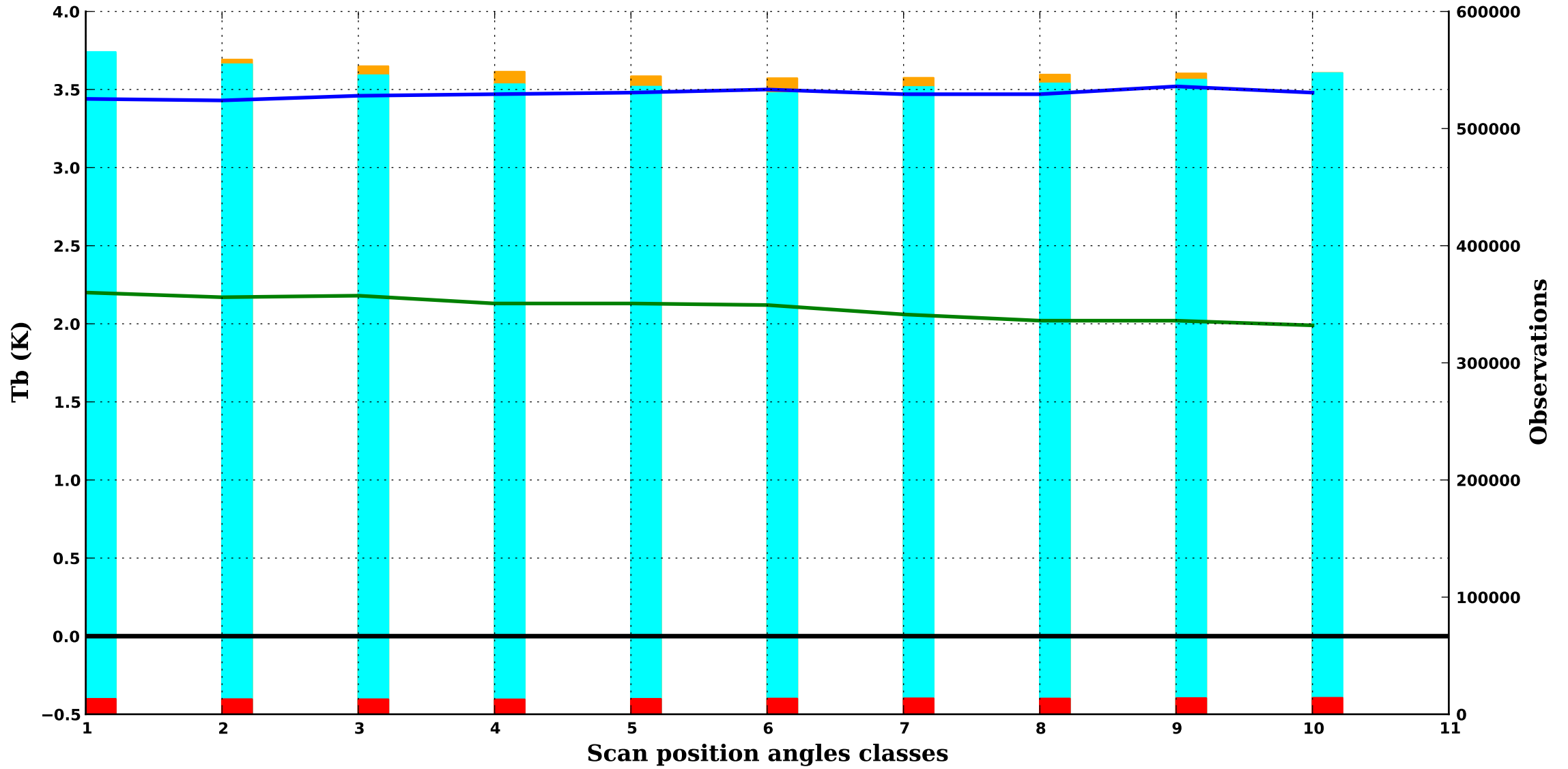
19.4H GHz, 1000 hPa



/sea

SSMI/S 13

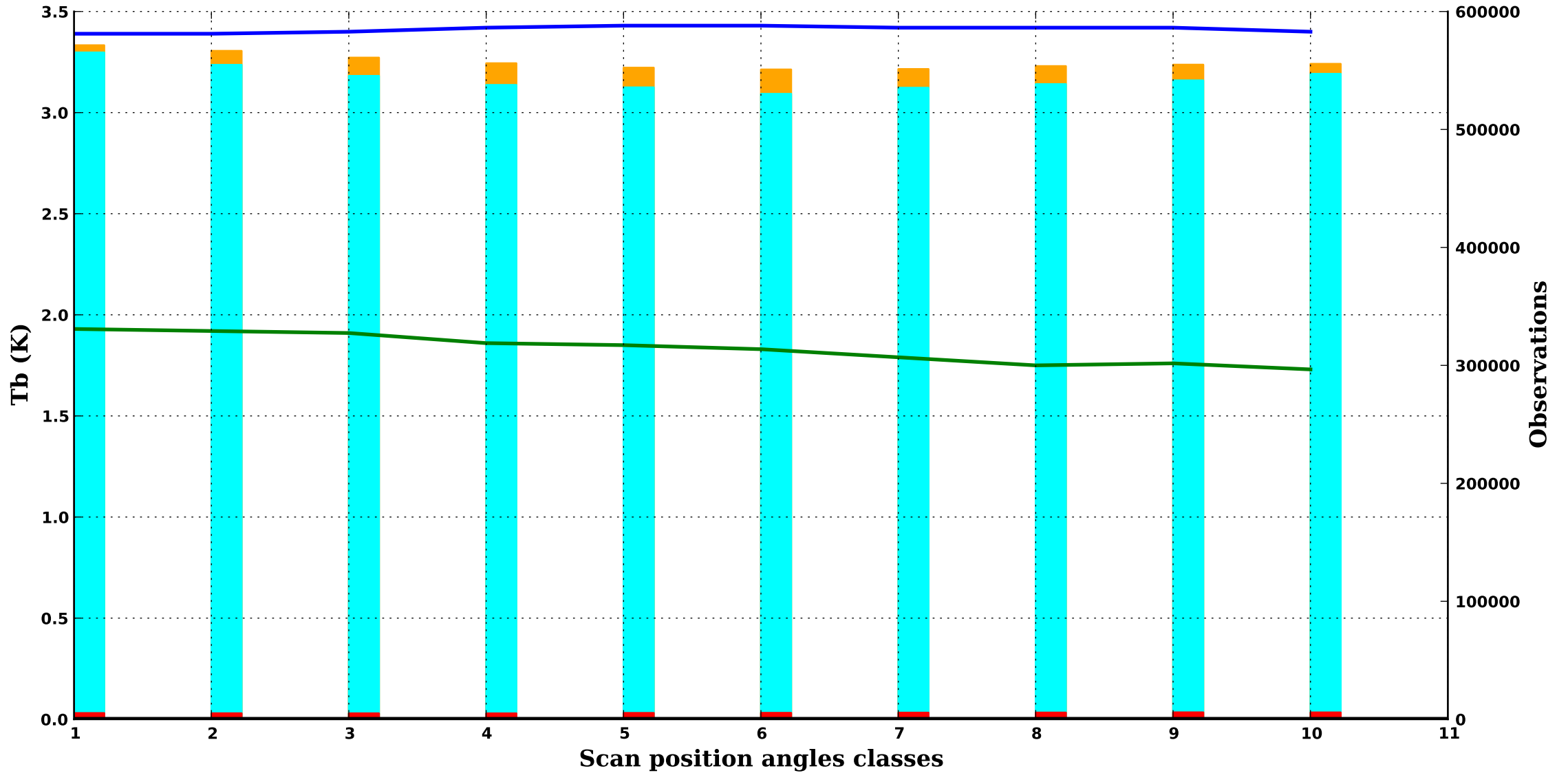
19.4V GHz, 1000 hPa



/sea

SSMI/S 14

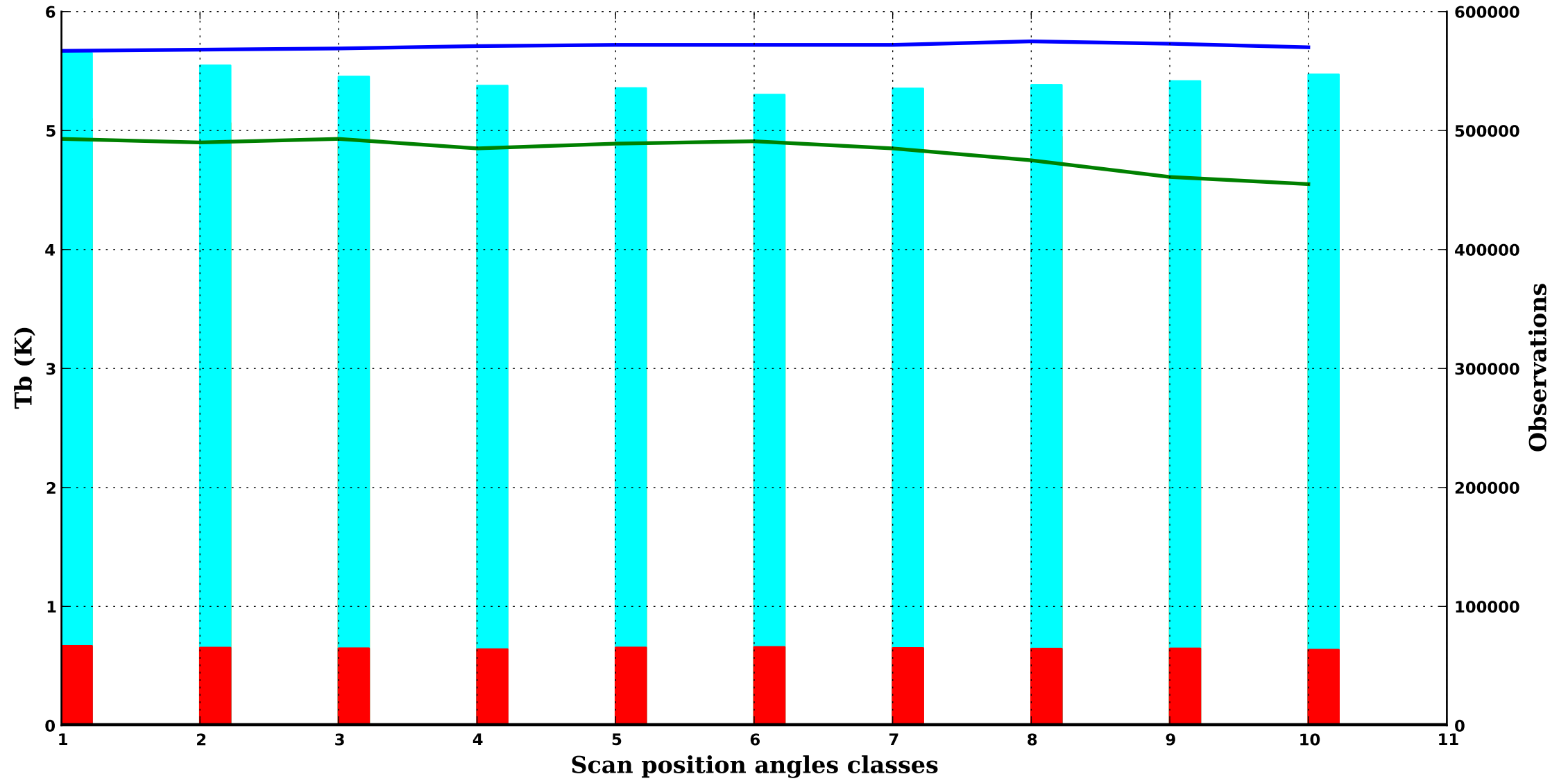
22.2V GHz, 1000 hPa



/sea

SSMI/S 15

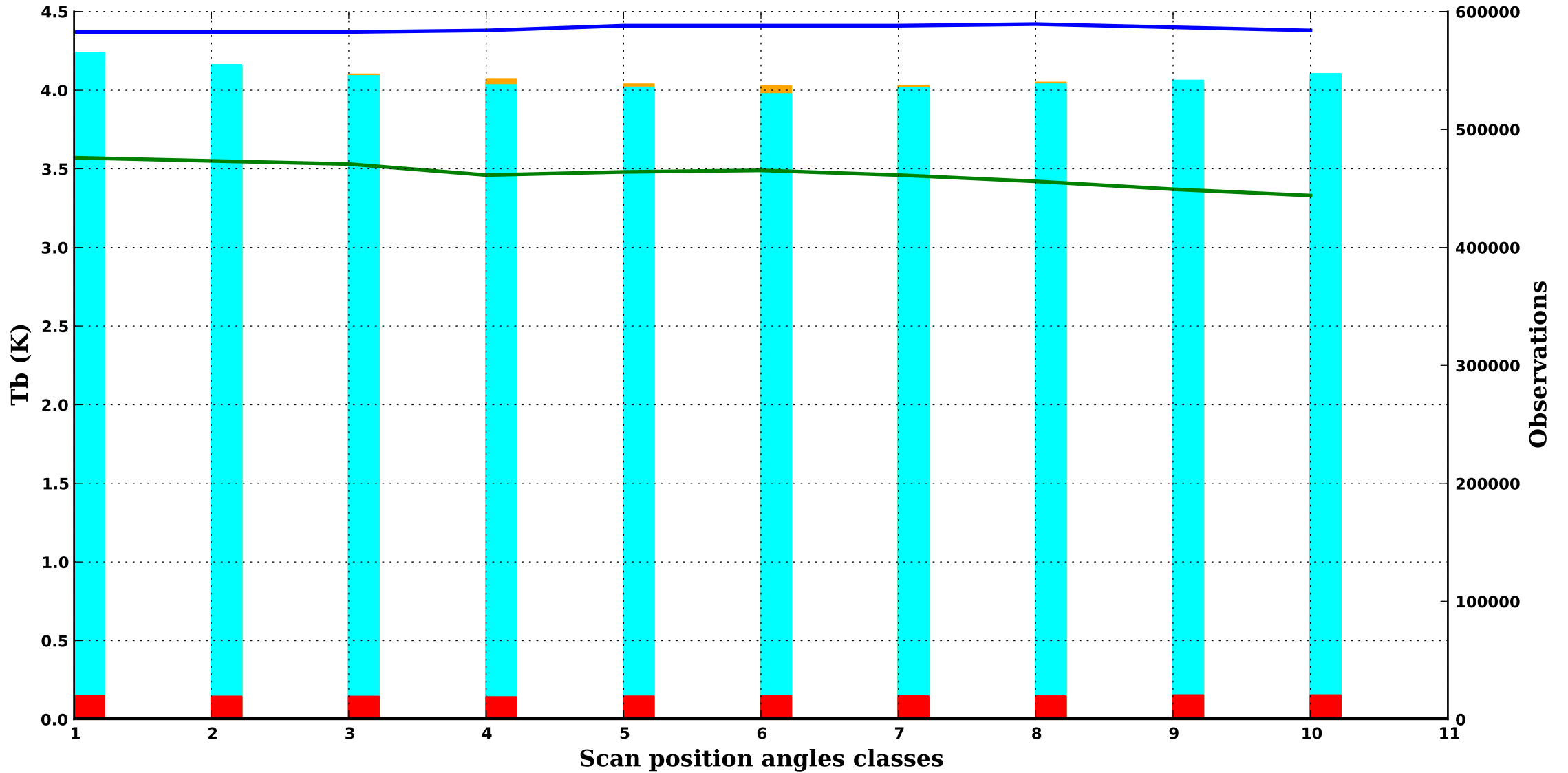
37.0H GHz, 1000 hPa



/sea

SSMI/S 16

37.0V GHz, 1000 hPa





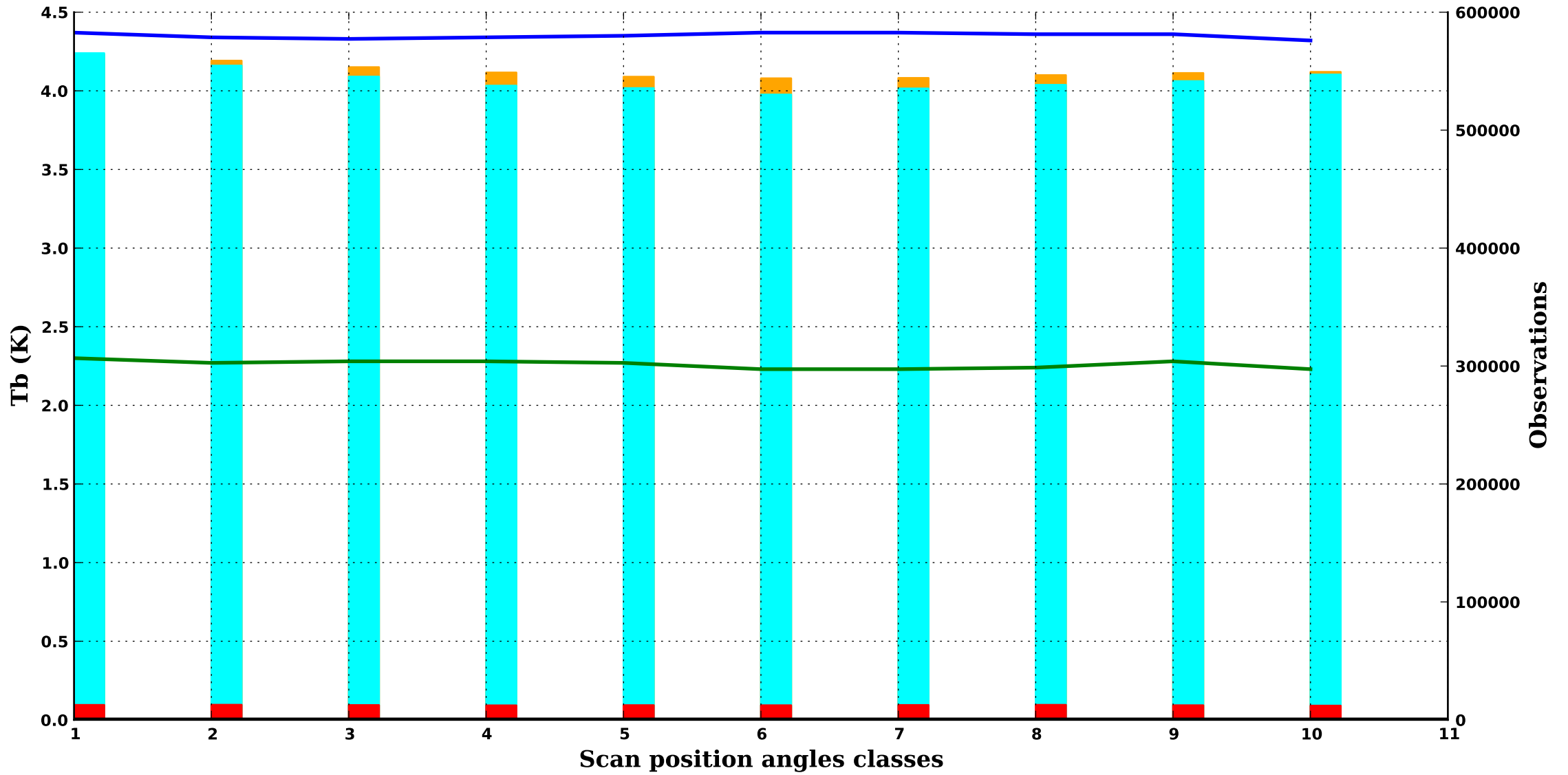
DMSP F17

Period : 202504

/sea

SSMI/S 17

91.7V GHz, 1000 hPa



— bias obs-guess    — std obs-guess    ■ nb obs    ■ nb rejects    ■ nb gross errors

/sea

SSMI/S 18

91.7H GHz, 1000 hPa

