

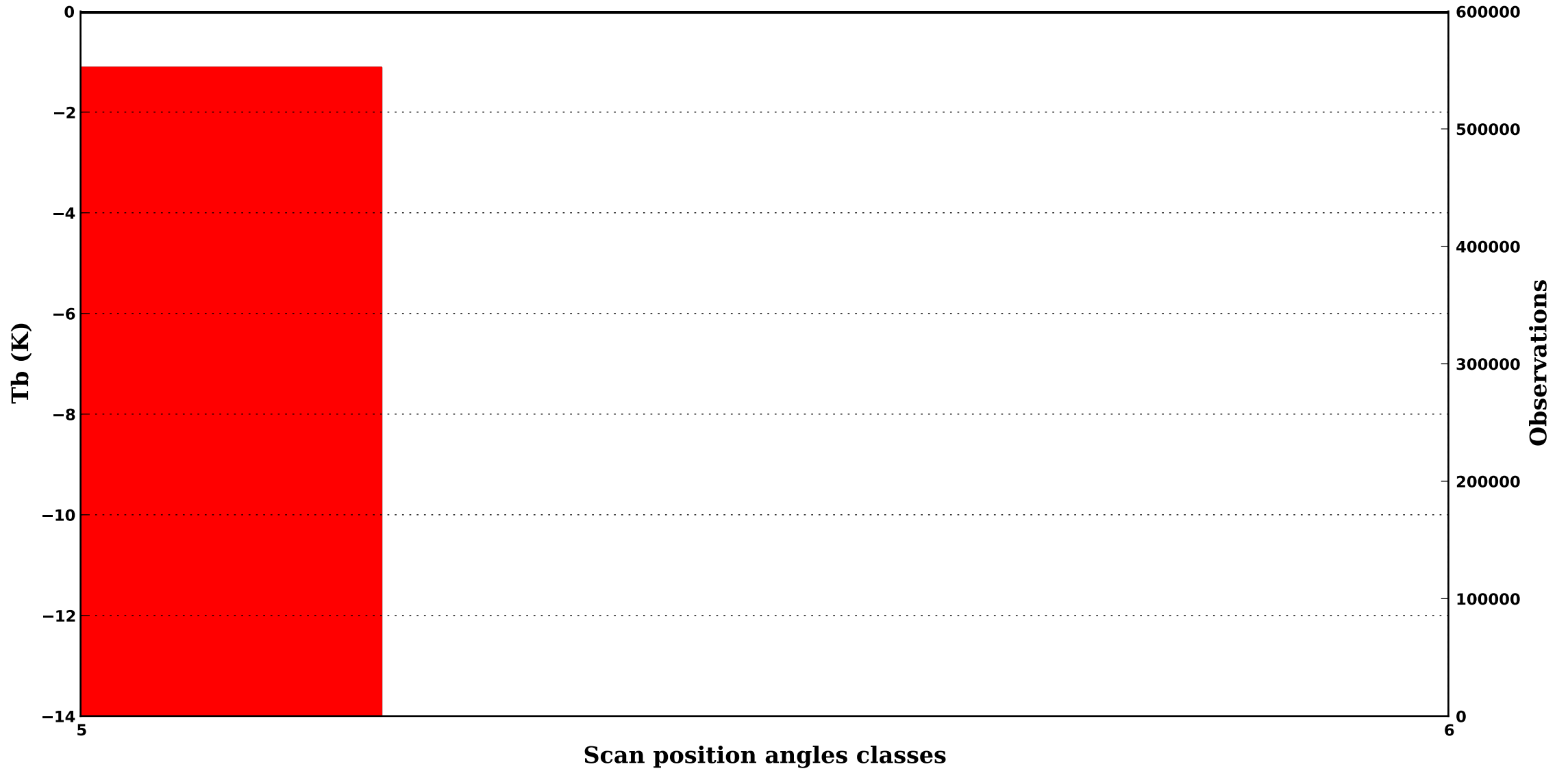
**DMSP F18**

*Period : 202504*

*clear/sea*

**SSMI/S 6**

**57.3R GHz, 90 hPa**



— bias obs-guess    — std obs-guess    — nb obs    — nb rejects    — nb gross errors

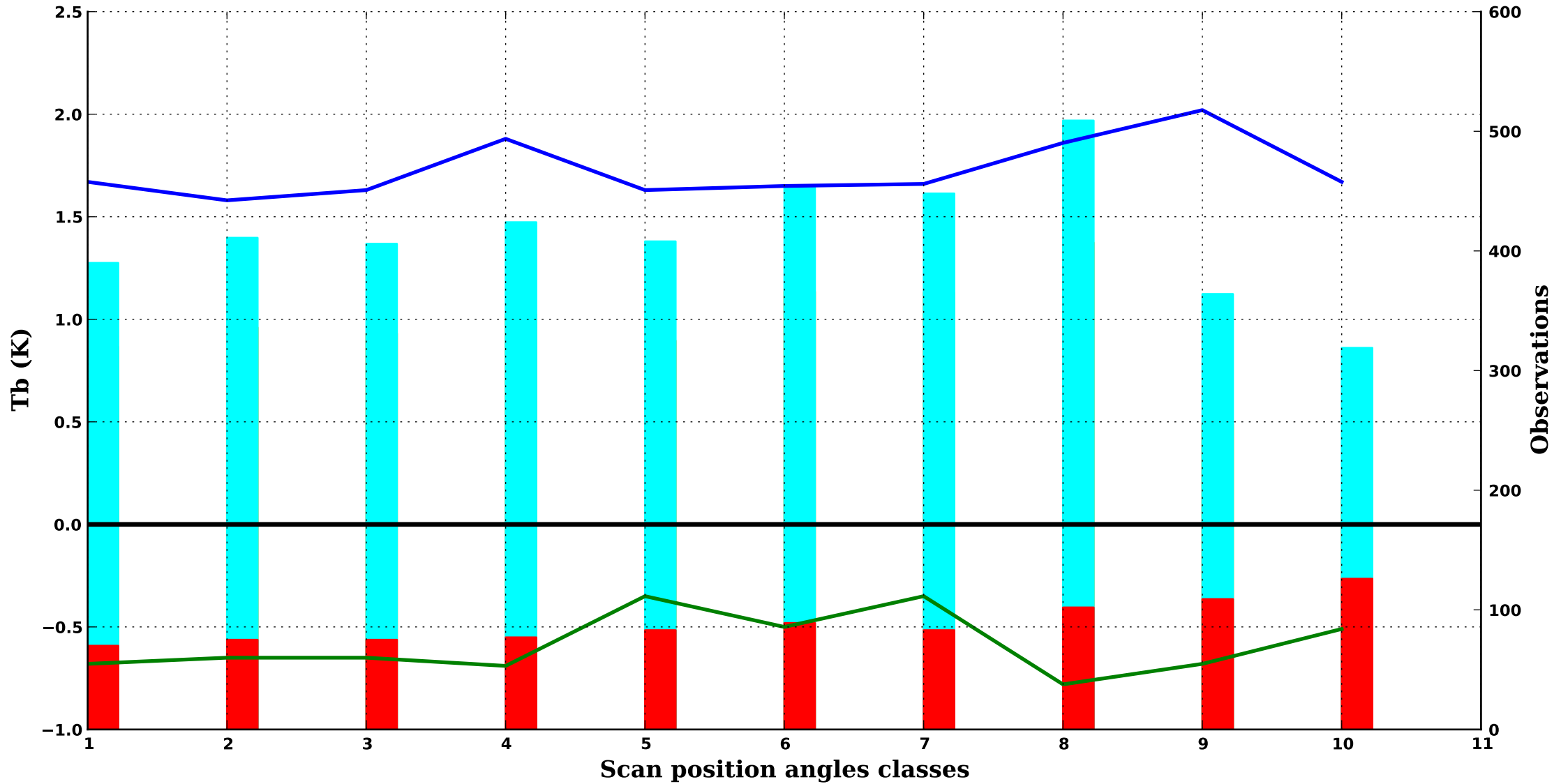
**DMSP F18**

*Period : 202504*

*clear/sea*

**SSMI/S 8**

**150.0H GHz, 1000 hPa**



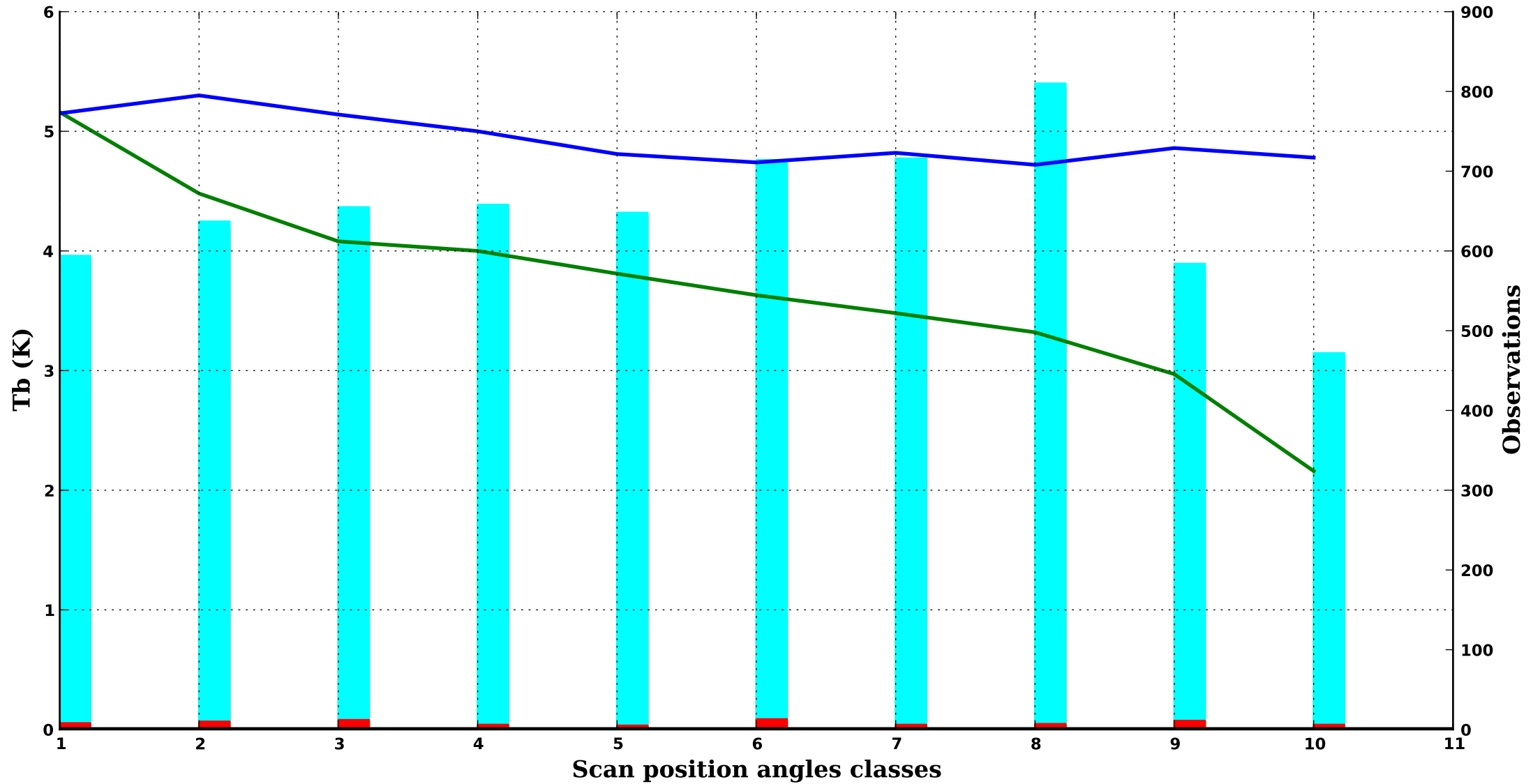
DMSP F18

Period : 202504

clear/sea

SSMI/S 9

183.3H GHz, 700 hPa

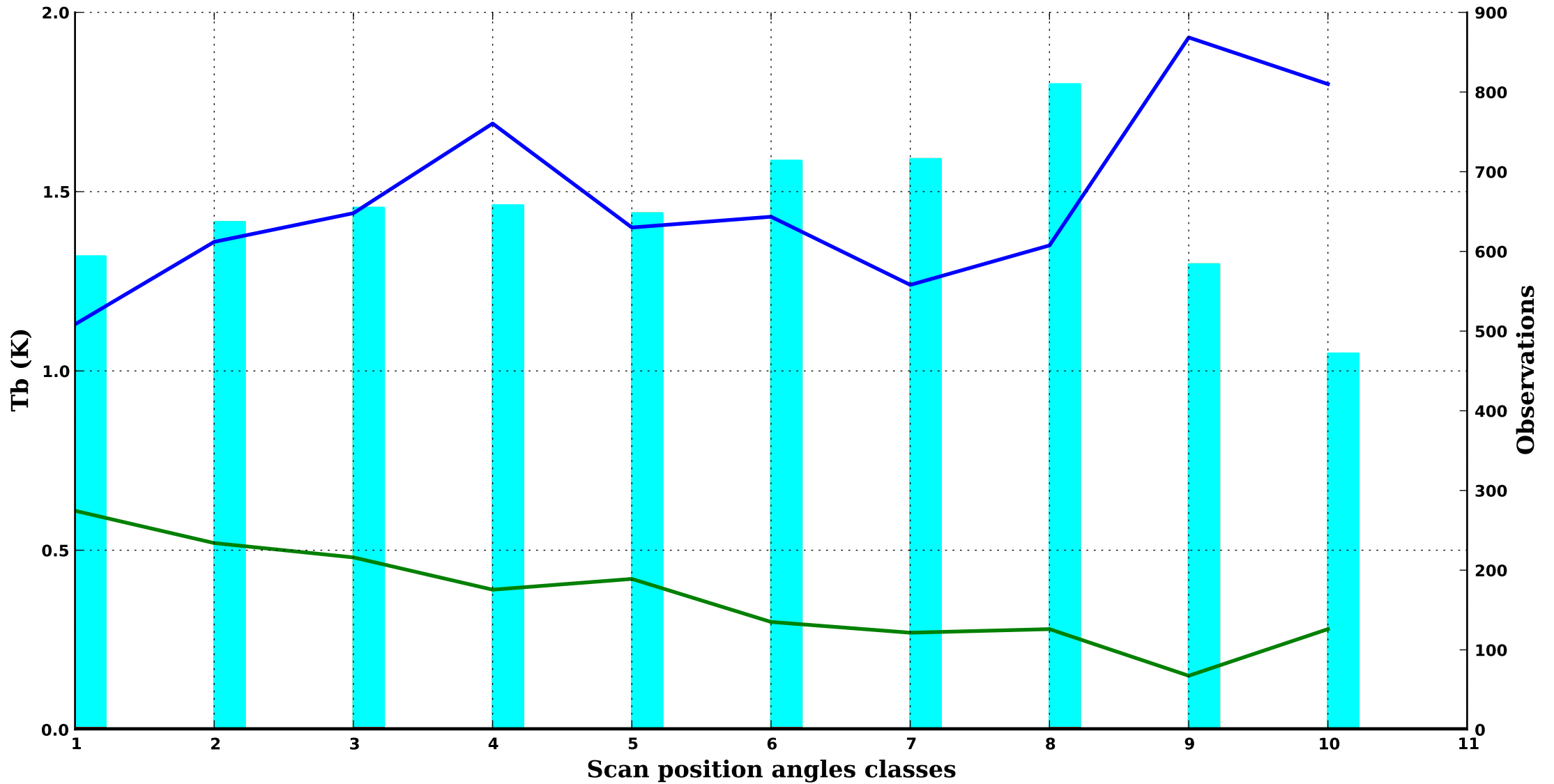


— bias obs-guess    — std obs-guess    ■ nb obs    ■ nb rejects    ■ nb gross errors

clear/sea

SSMI/S 10

183.3H GHz, 500 hPa



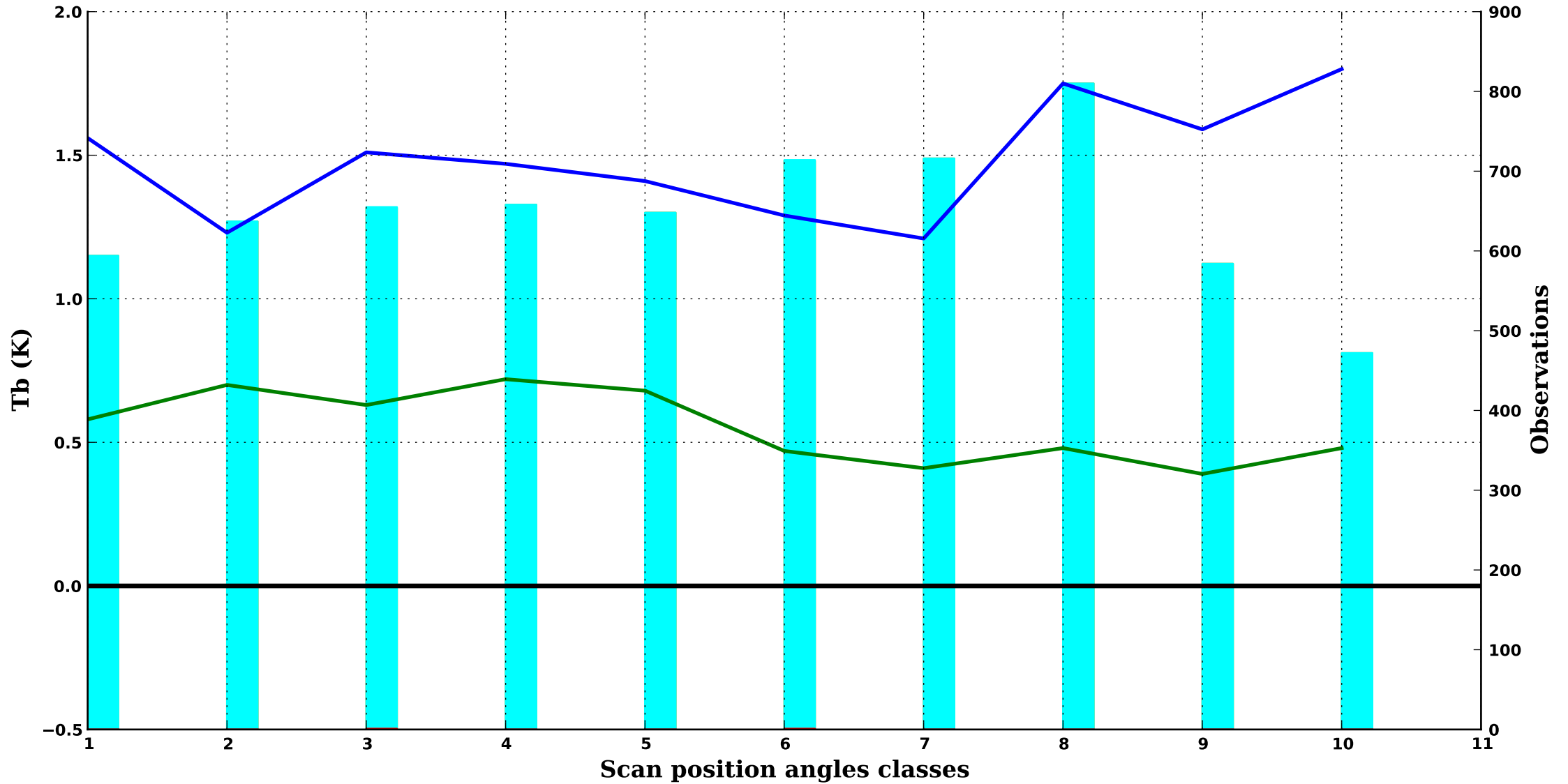
**DMSP F18**

*Period : 202504*

*clear/sea*

**SSMI/S 11**

**183.3H GHz, 350 hPa**



— bias obs-guess    — std obs-guess    ■ nb obs    ■ nb rejects    ■ nb gross errors

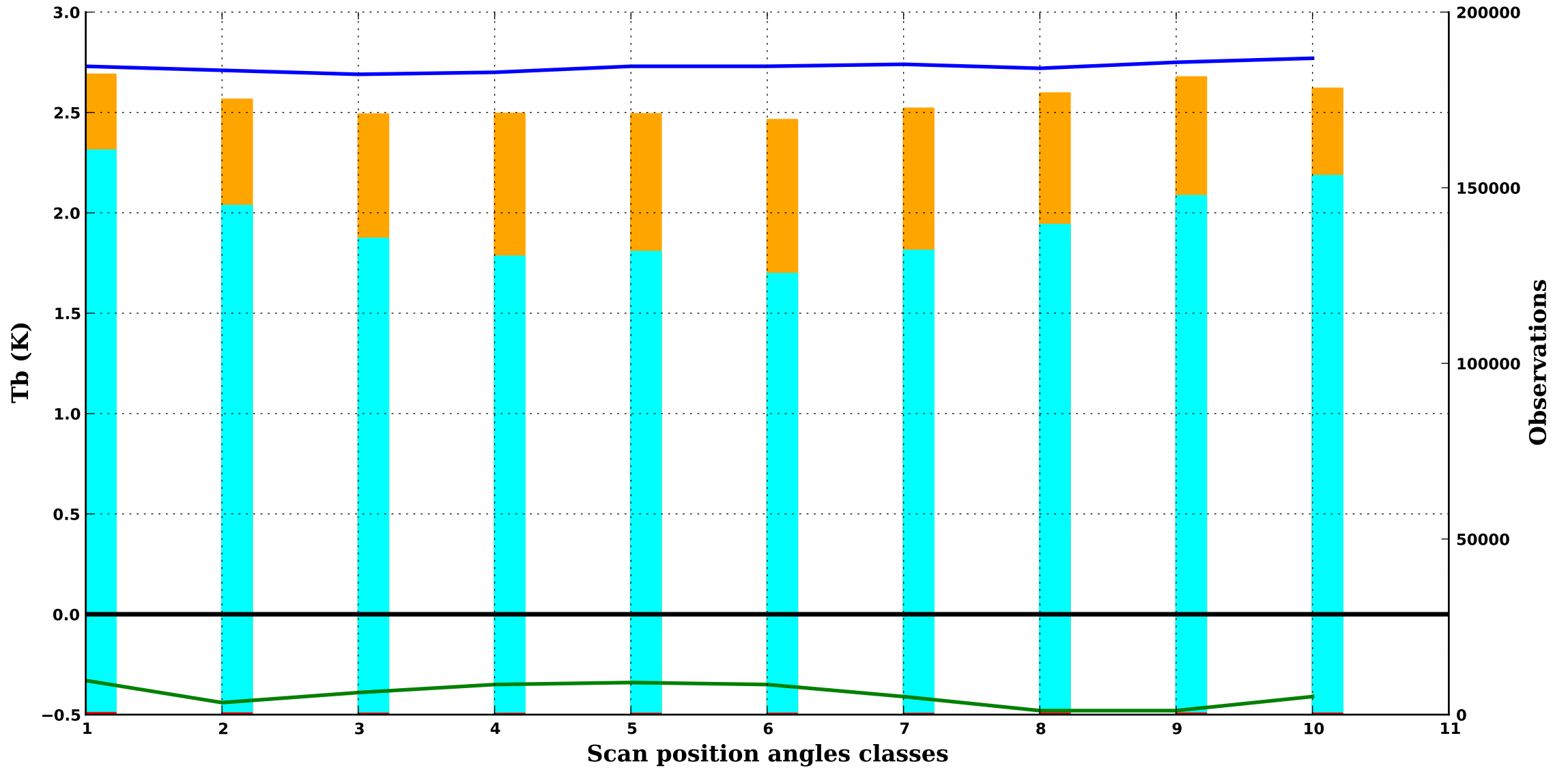
DMSP F18

Period : 202504

clear/sea

SSMI/S 12

19.4H GHz, 1000 hPa



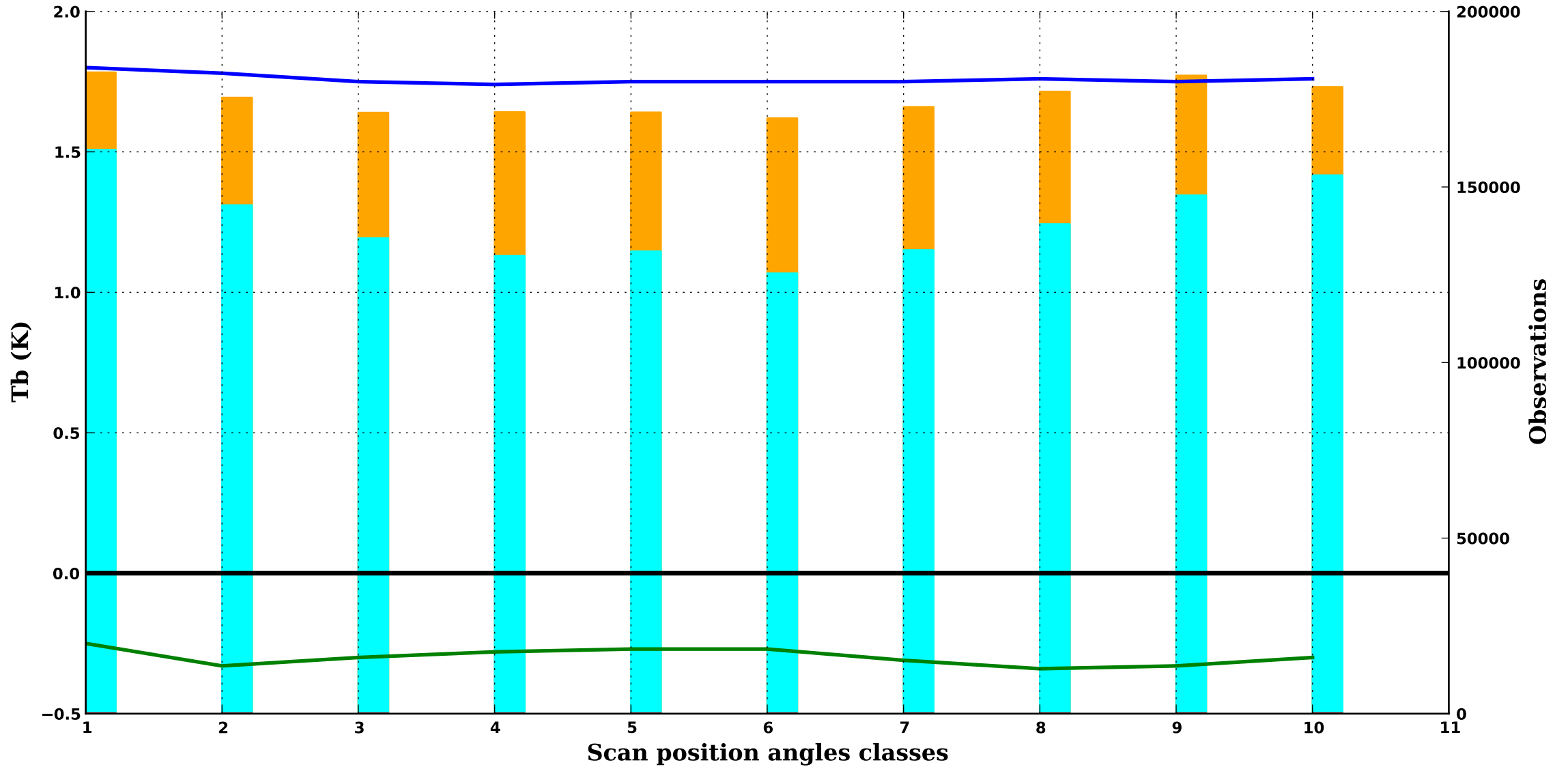
**DMSP F18**

*Period : 202504*

*clear/sea*

**SSMI/S 13**

**19.4V GHz, 1000 hPa**



— bias obs-guess    — std obs-guess    ■ nb obs    ■ nb rejects    ■ nb gross errors

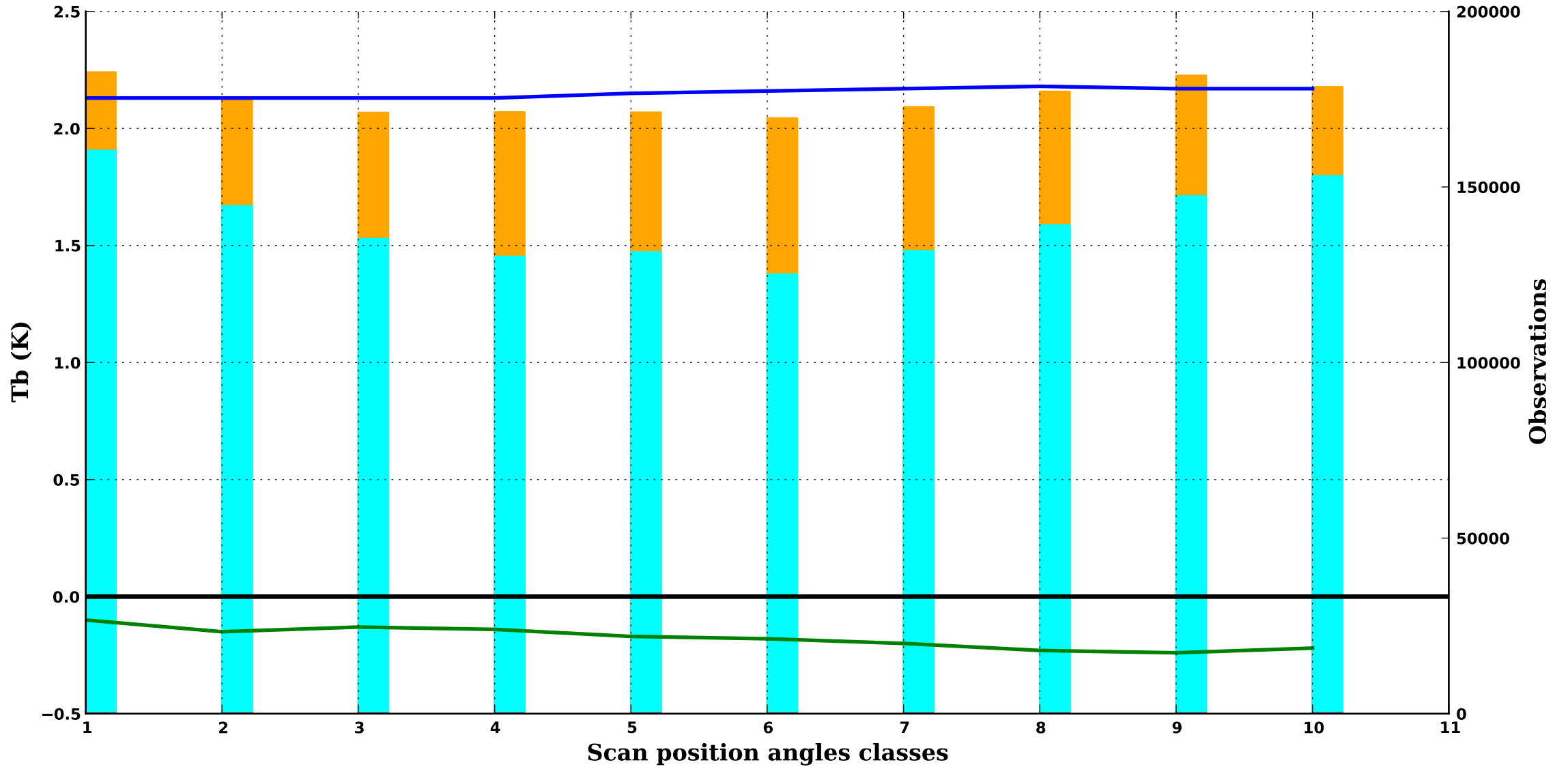
**DMSP F18**

*Period : 202504*

*clear/sea*

**SSMI/S 14**

**22.2V GHz, 1000 hPa**

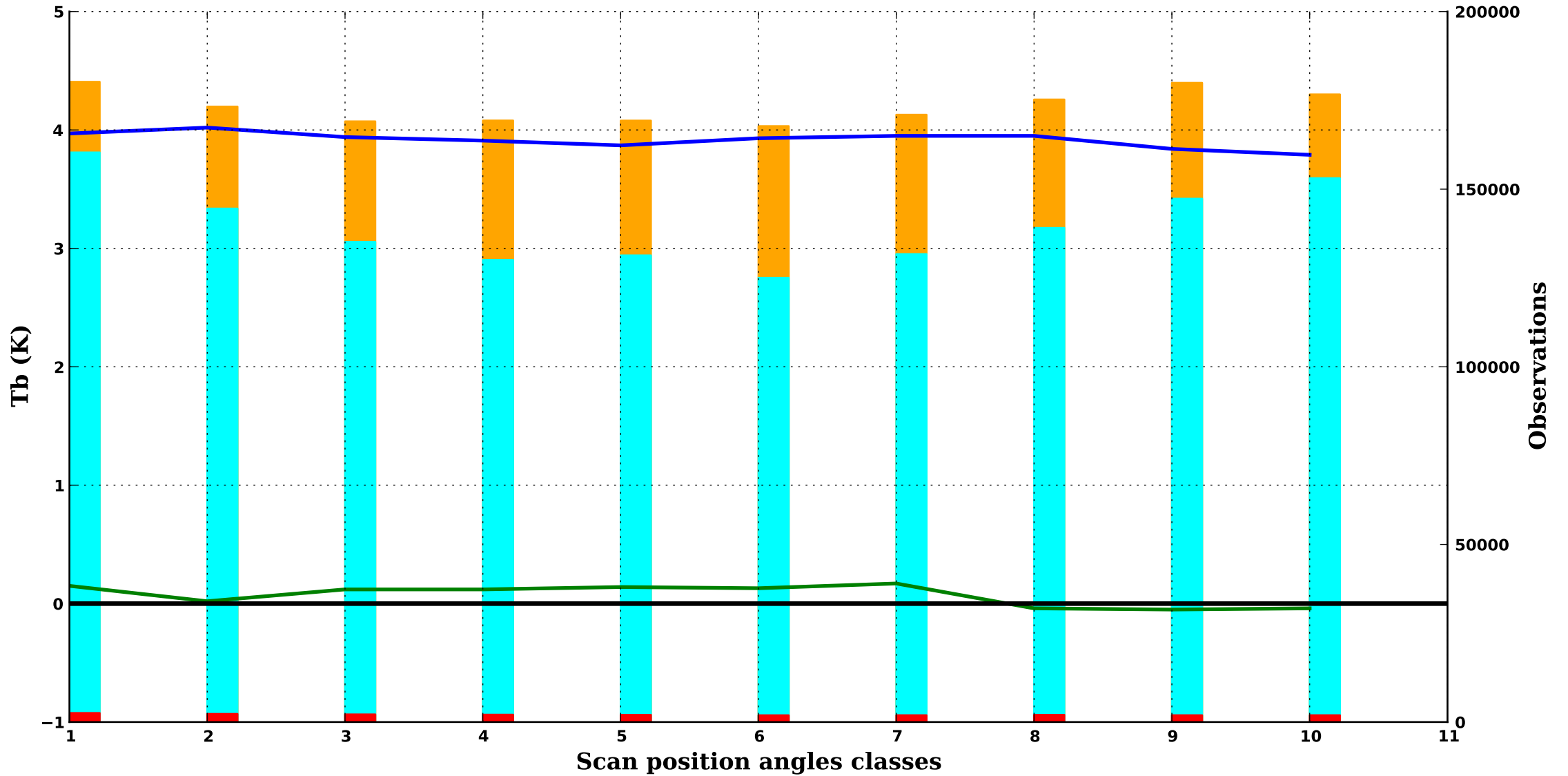




clear/sea

SSMI/S 15

37.0H GHz, 1000 hPa



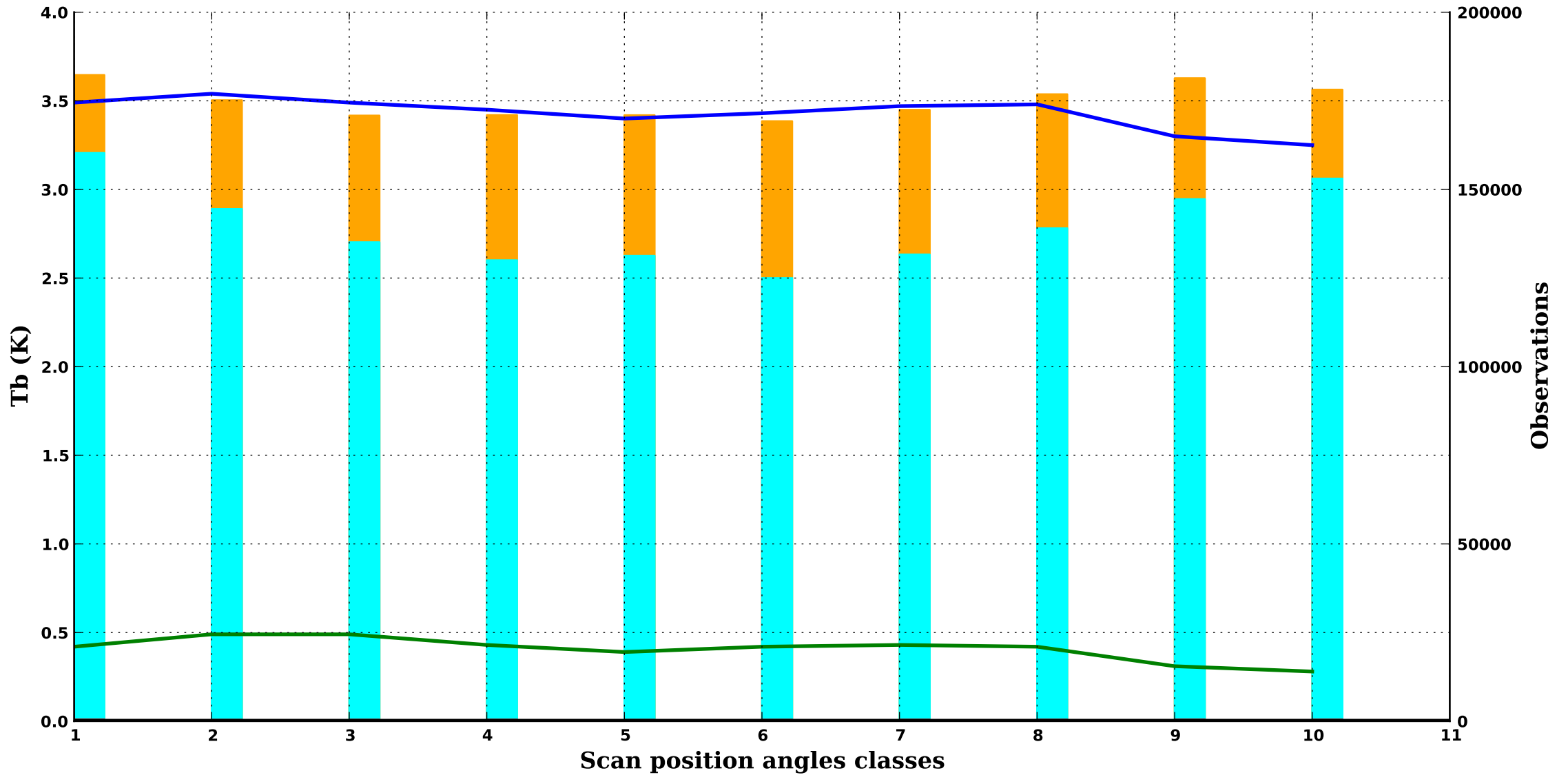
**DMSP F18**

*Period : 202504*

*clear/sea*

**SSMI/S 16**

**37.0V GHz, 1000 hPa**



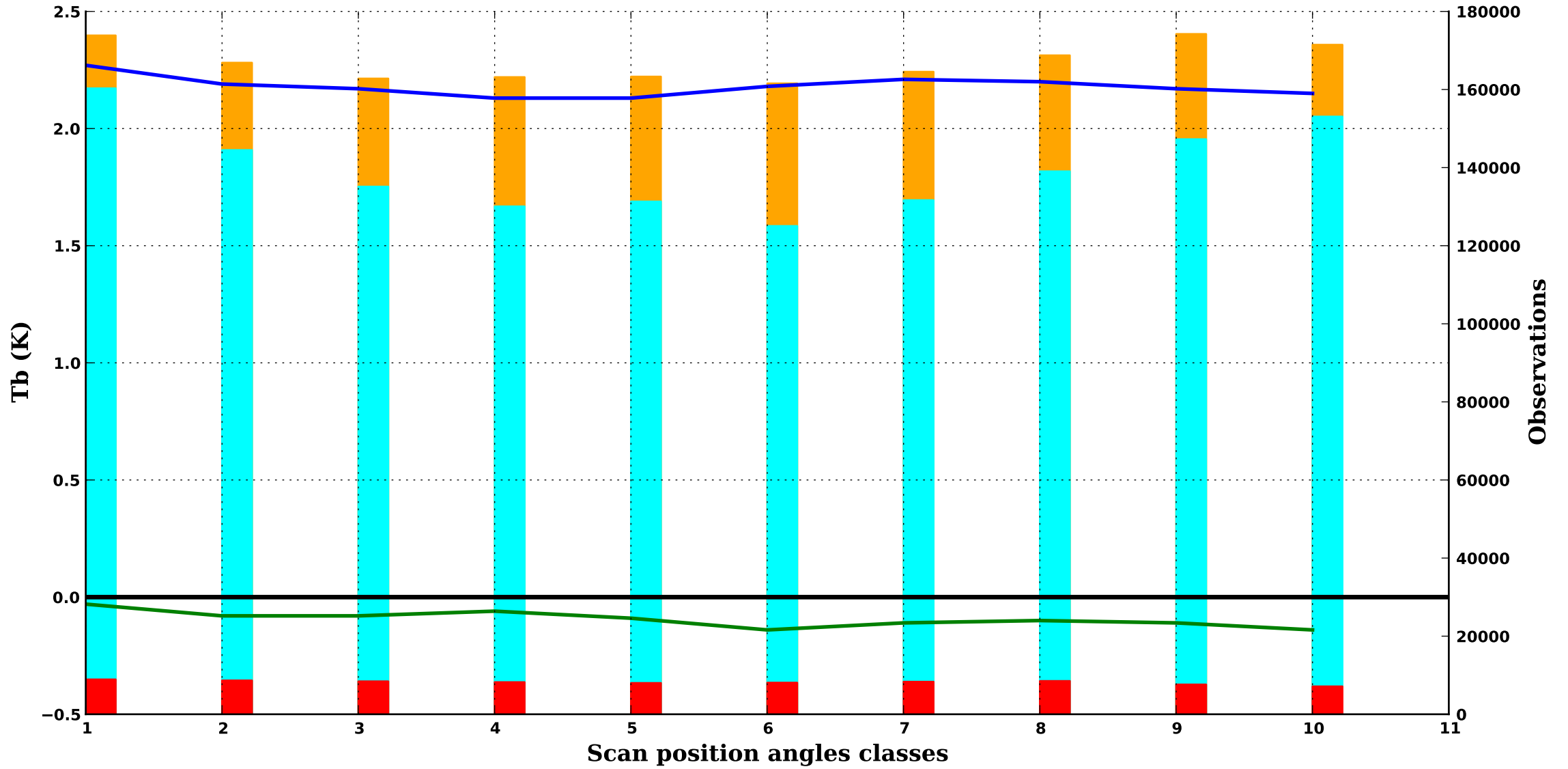
**DMSP F18**

*Period : 202504*

*clear/sea*

**SSMI/S 17**

**91.7V GHz, 1000 hPa**



clear/sea

SSMI/S 18

91.7H GHz, 1000 hPa

