

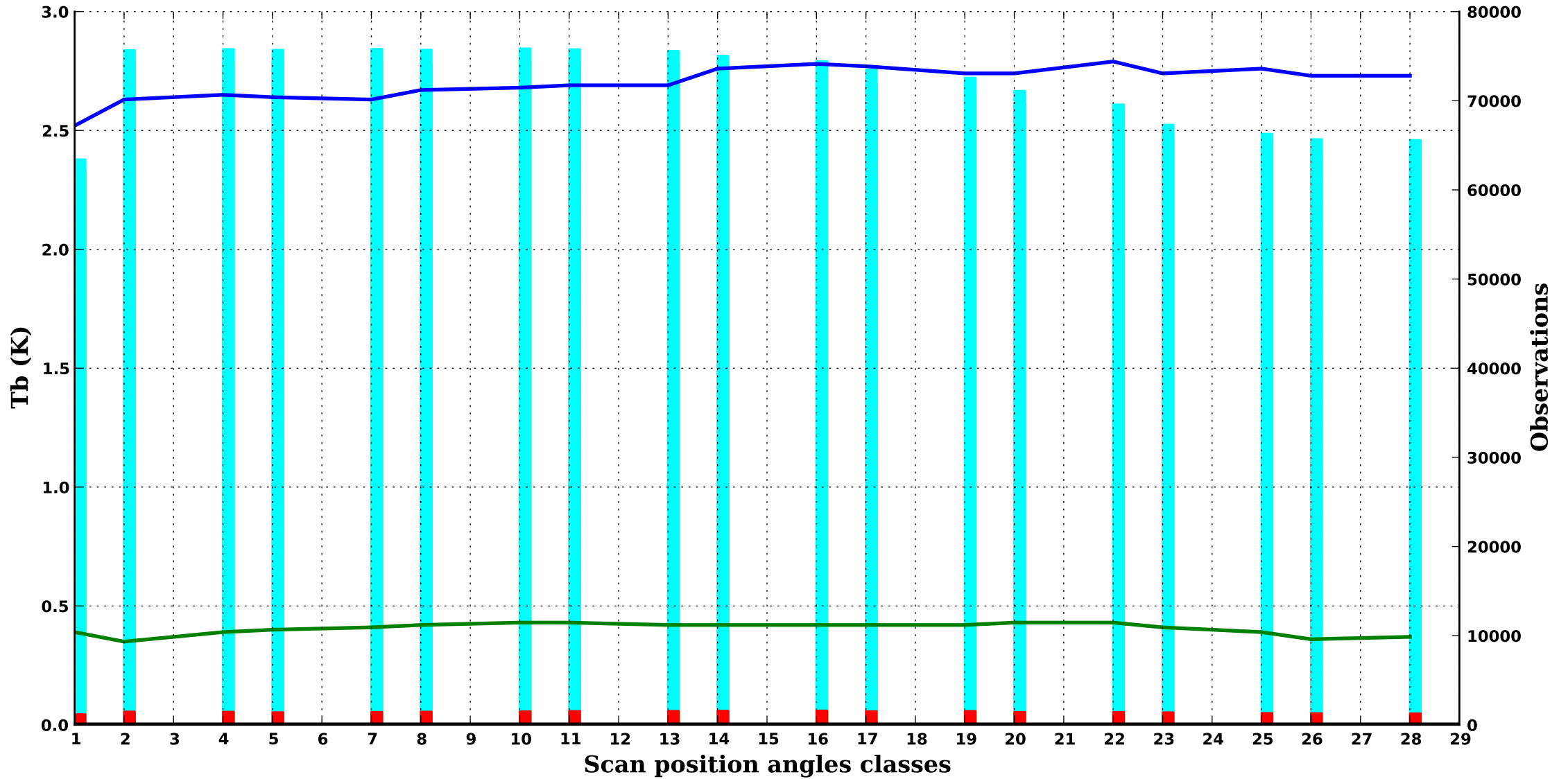
**GPM**

*Period : 202504*

*clear/*

**GMI 1**

**10.6V GHz, 1000 hPa**



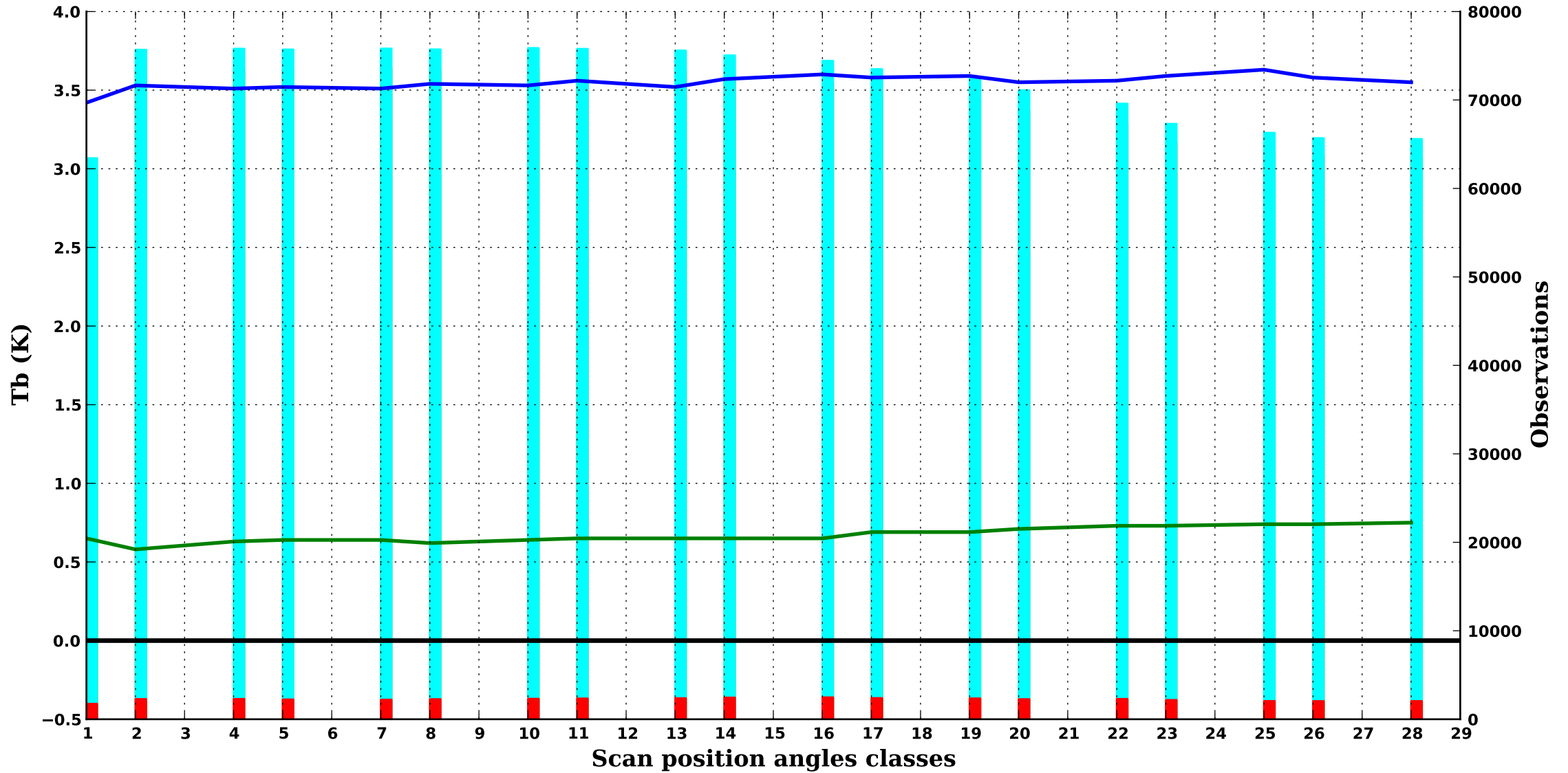
**GPM**

*Period : 202504*

*clear/*

**GMI 2**

**10.6H GHz, 1000 hPa**



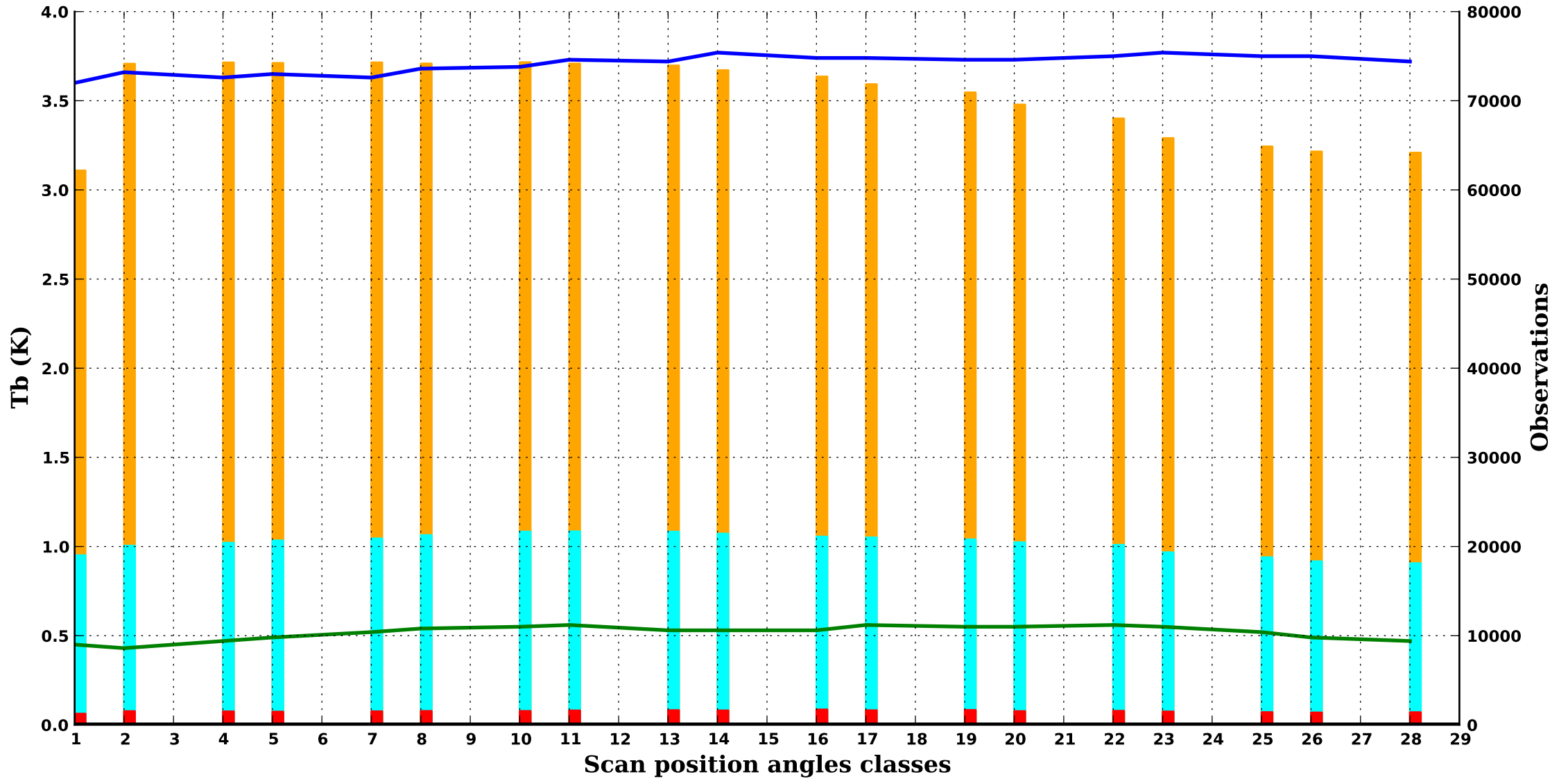
**GPM**

*Period : 202504*

*clear/*

**GMI 3**

**18.7V GHz, 1000 hPa**



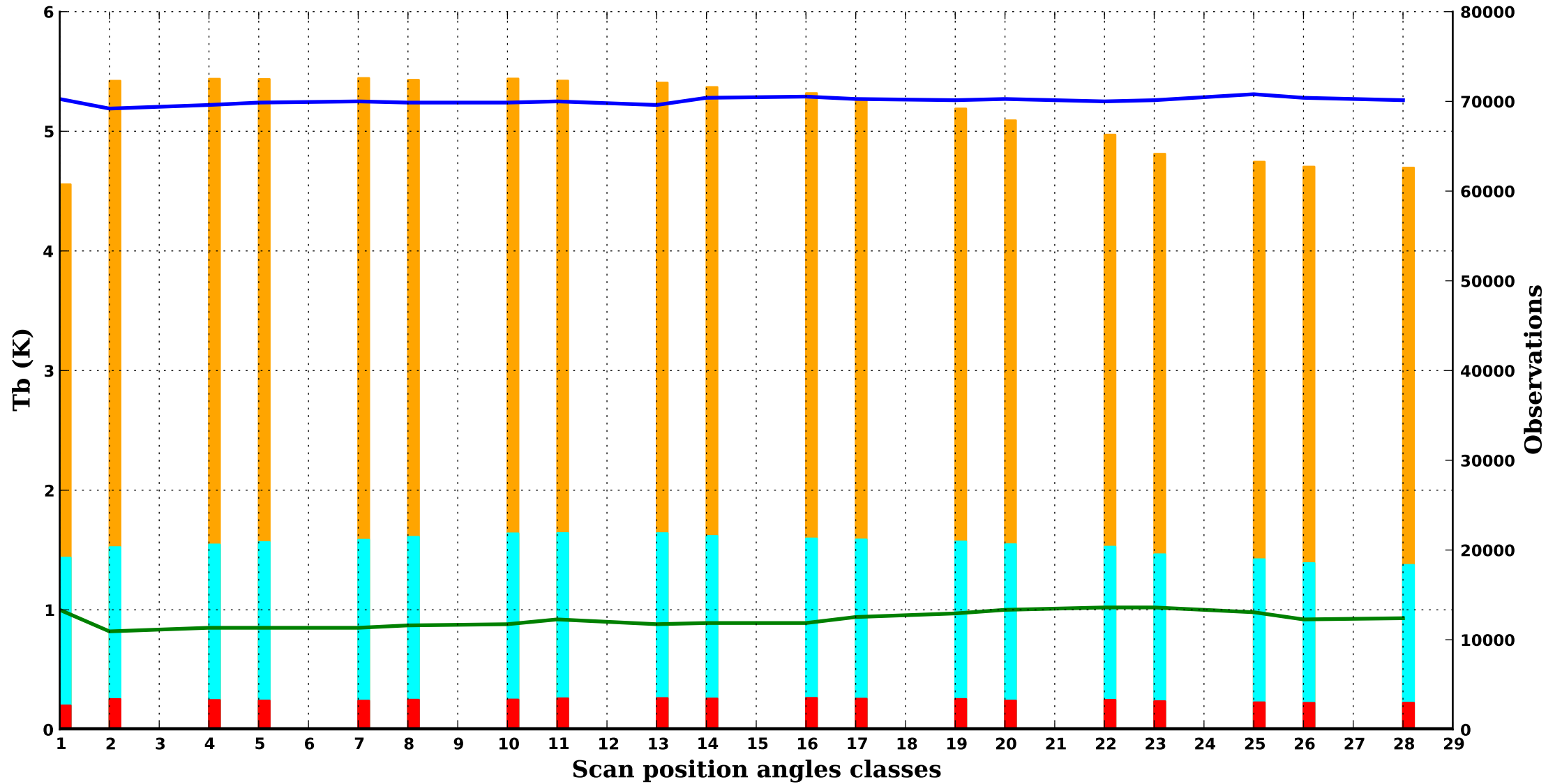
**GPM**

*Period : 202504*

*clear/*

**GMI 4**

**18.7H GHz, 1000 hPa**



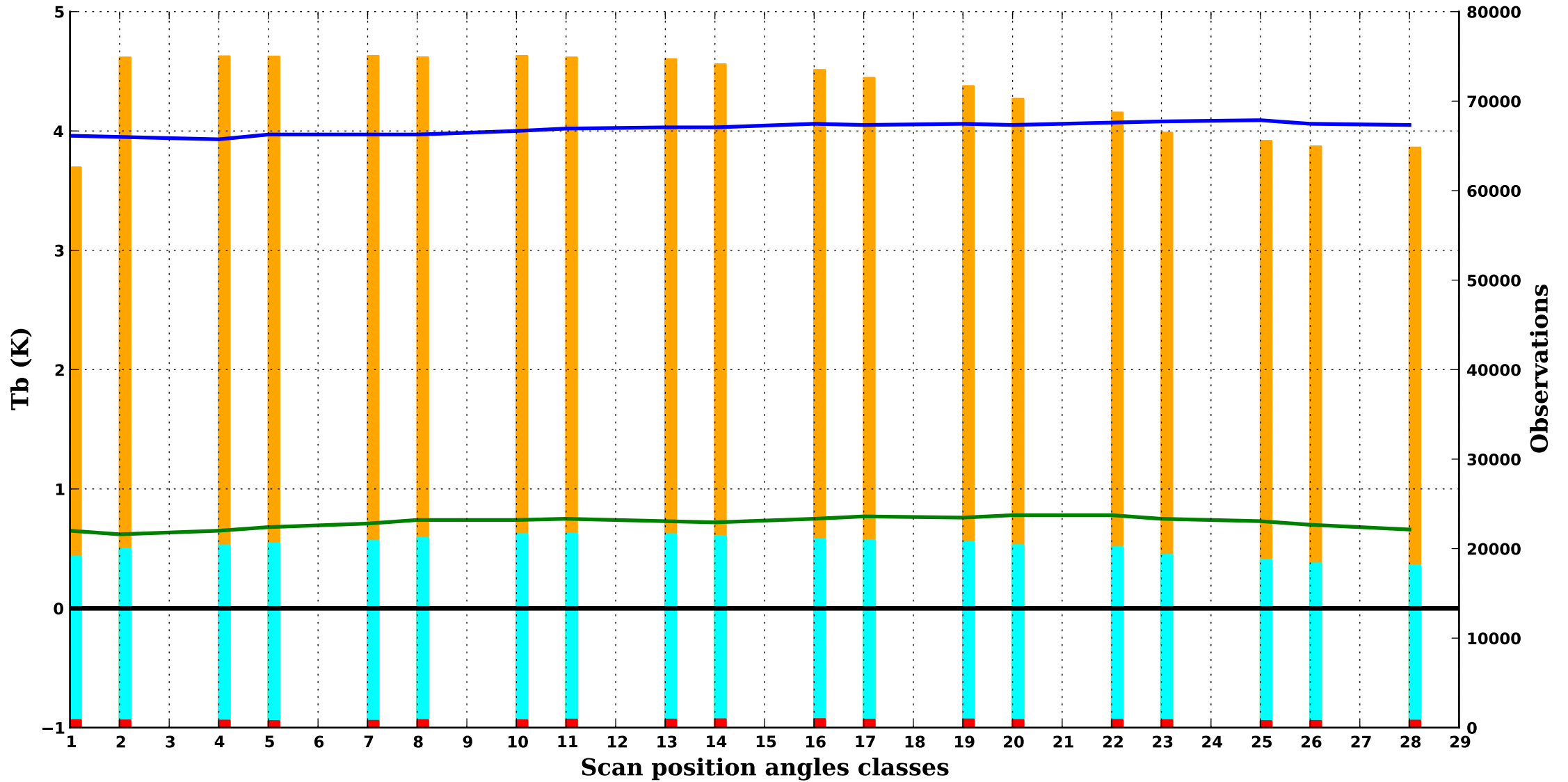
GPM

Period : 202504

clear/

GMI 5

23.8V GHz, 1000 hPa



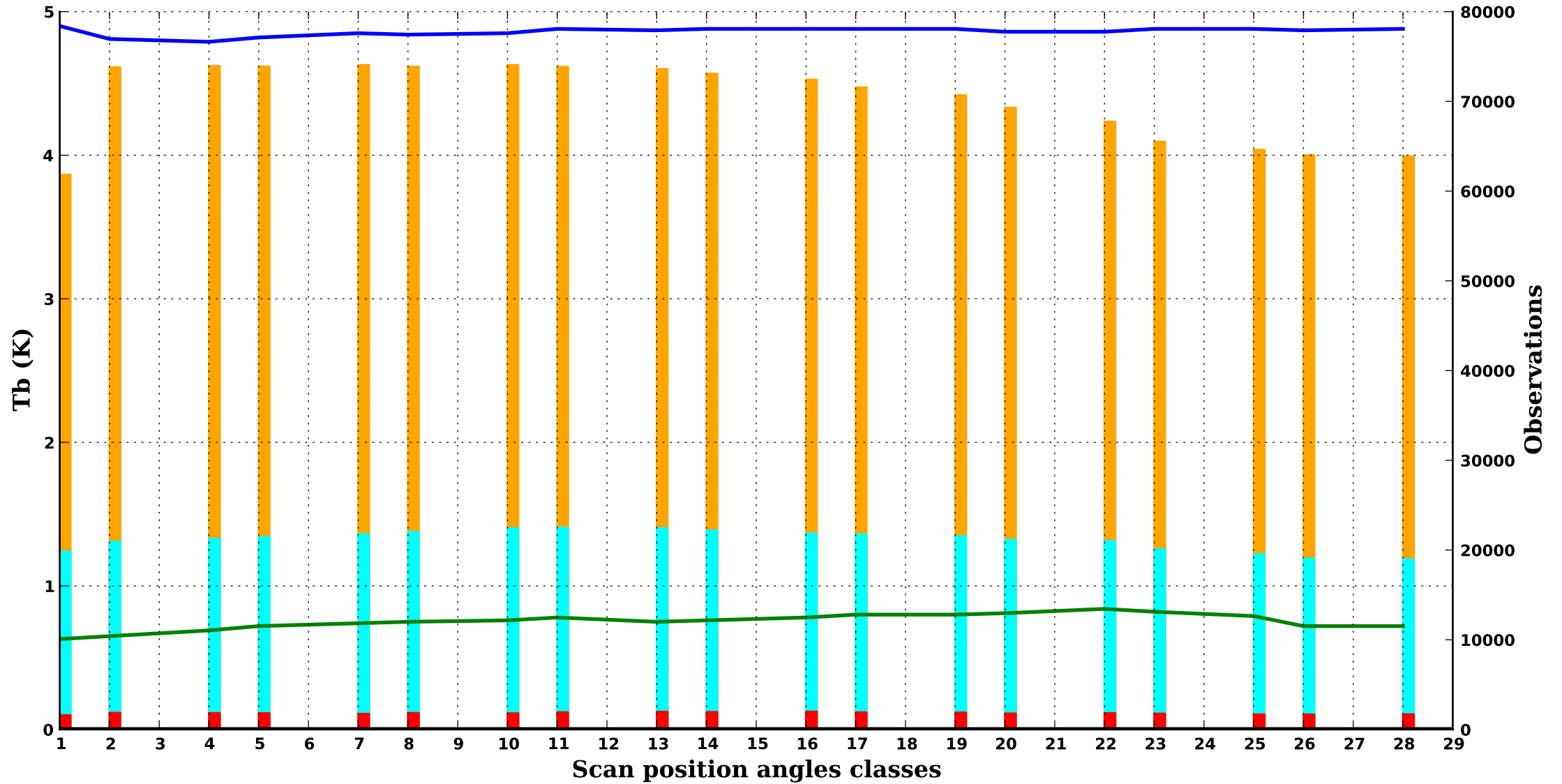
GPM

Period : 202504

clear/

GMI 6

36.5V GHz, 1000 hPa



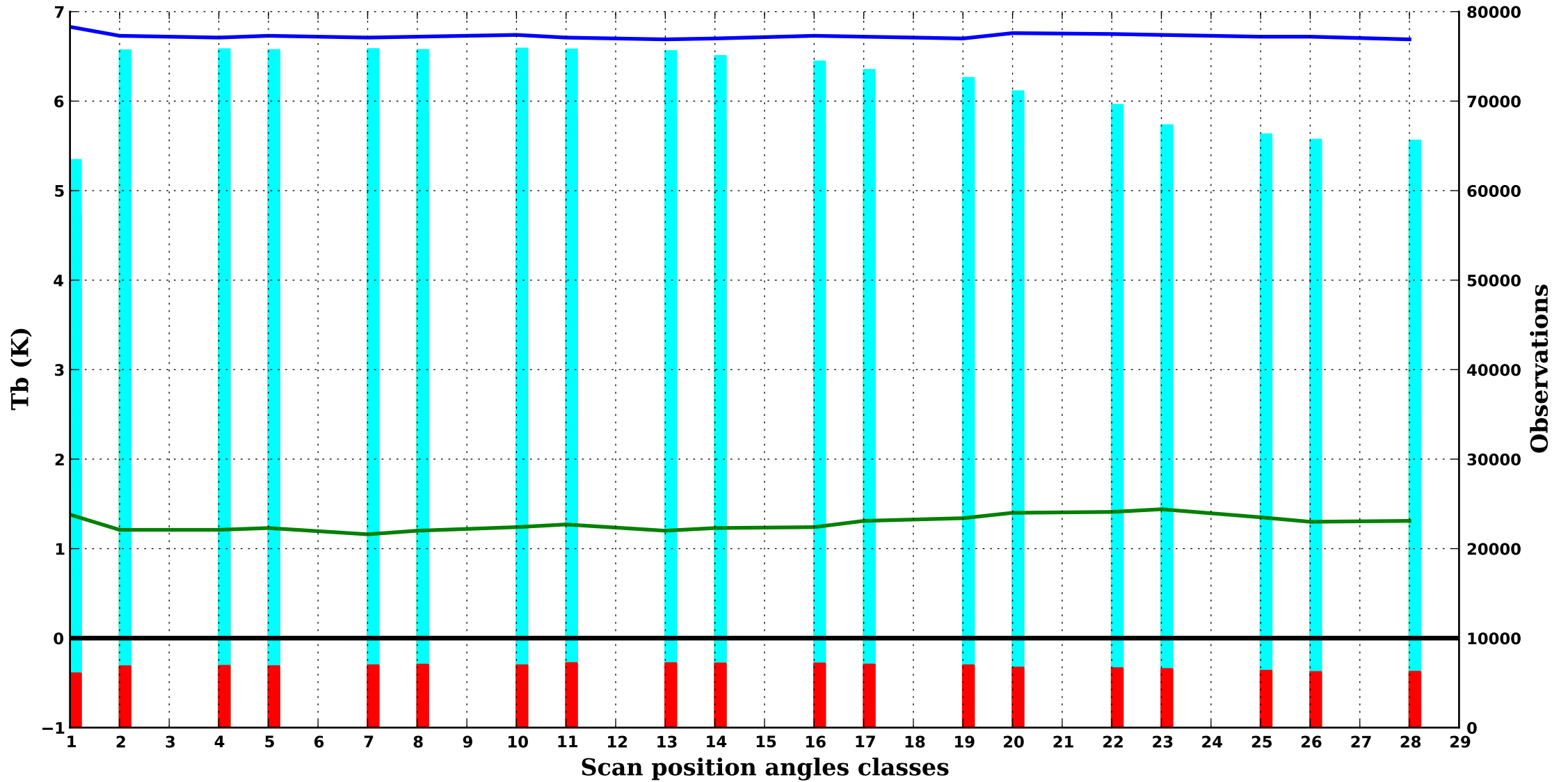
**GPM**

*Period : 202504*

*clear/*

**GMI 7**

**36.5H GHz, 1000 hPa**



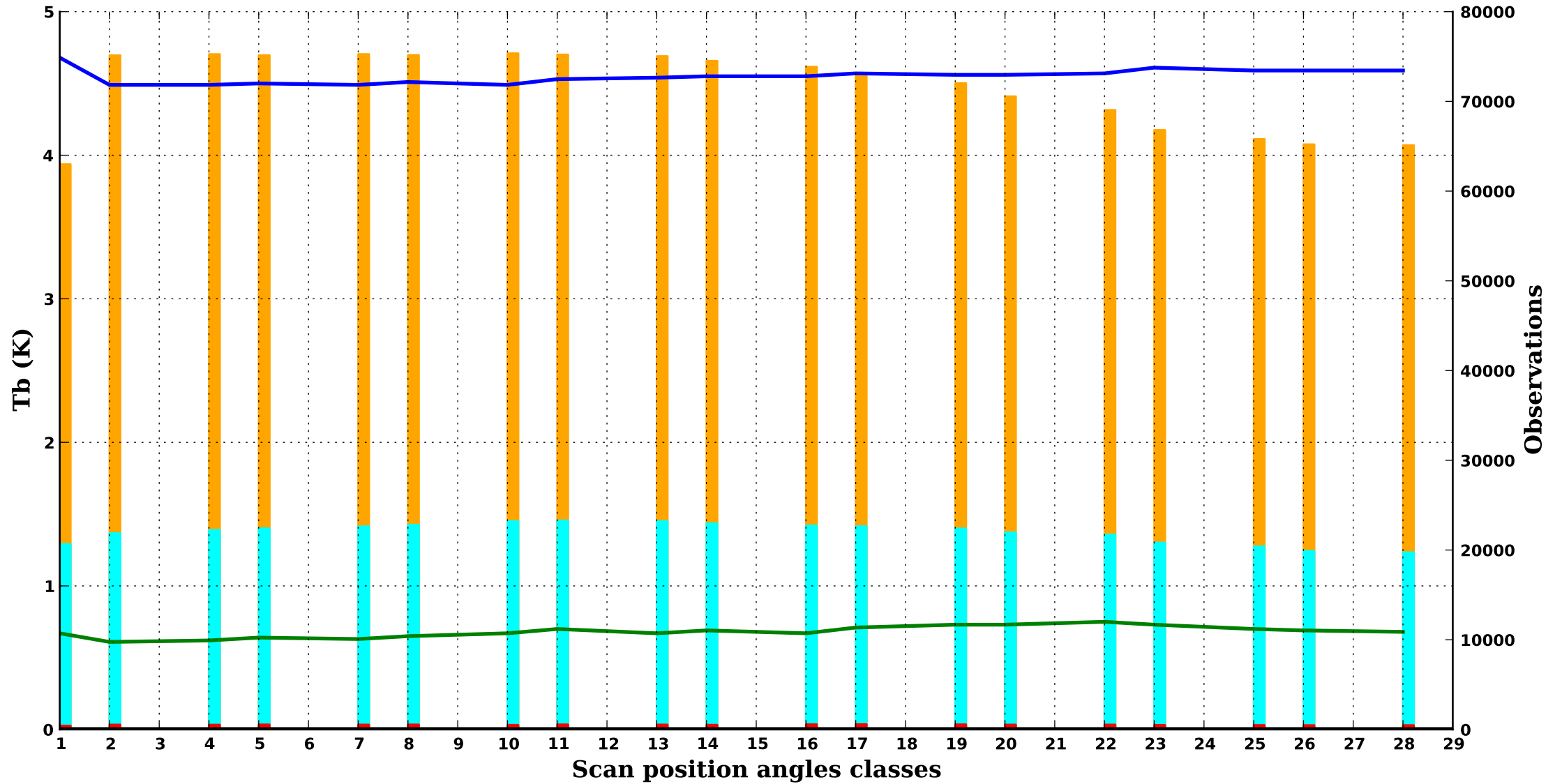
GPM

Period : 202504

clear/

GMI 8

89.0V GHz, 1000 hPa



— bias obs-guess    — std obs-guess    ■ nb obs    ■ nb rejects    ■ nb gross errors



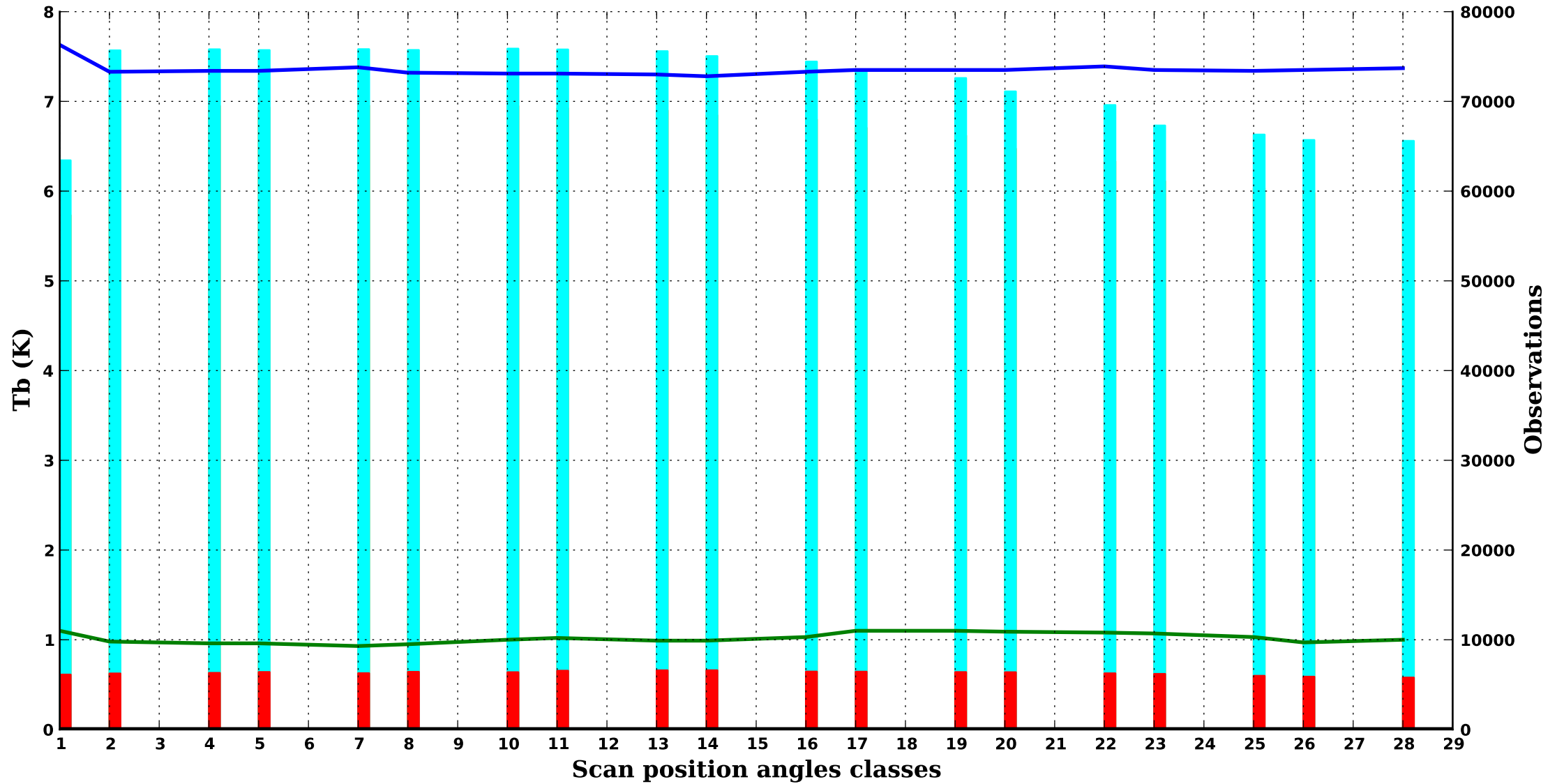
**GPM**

*Period : 202504*

*clear/*

**GMI 9**

**89.0H GHz, 1000 hPa**



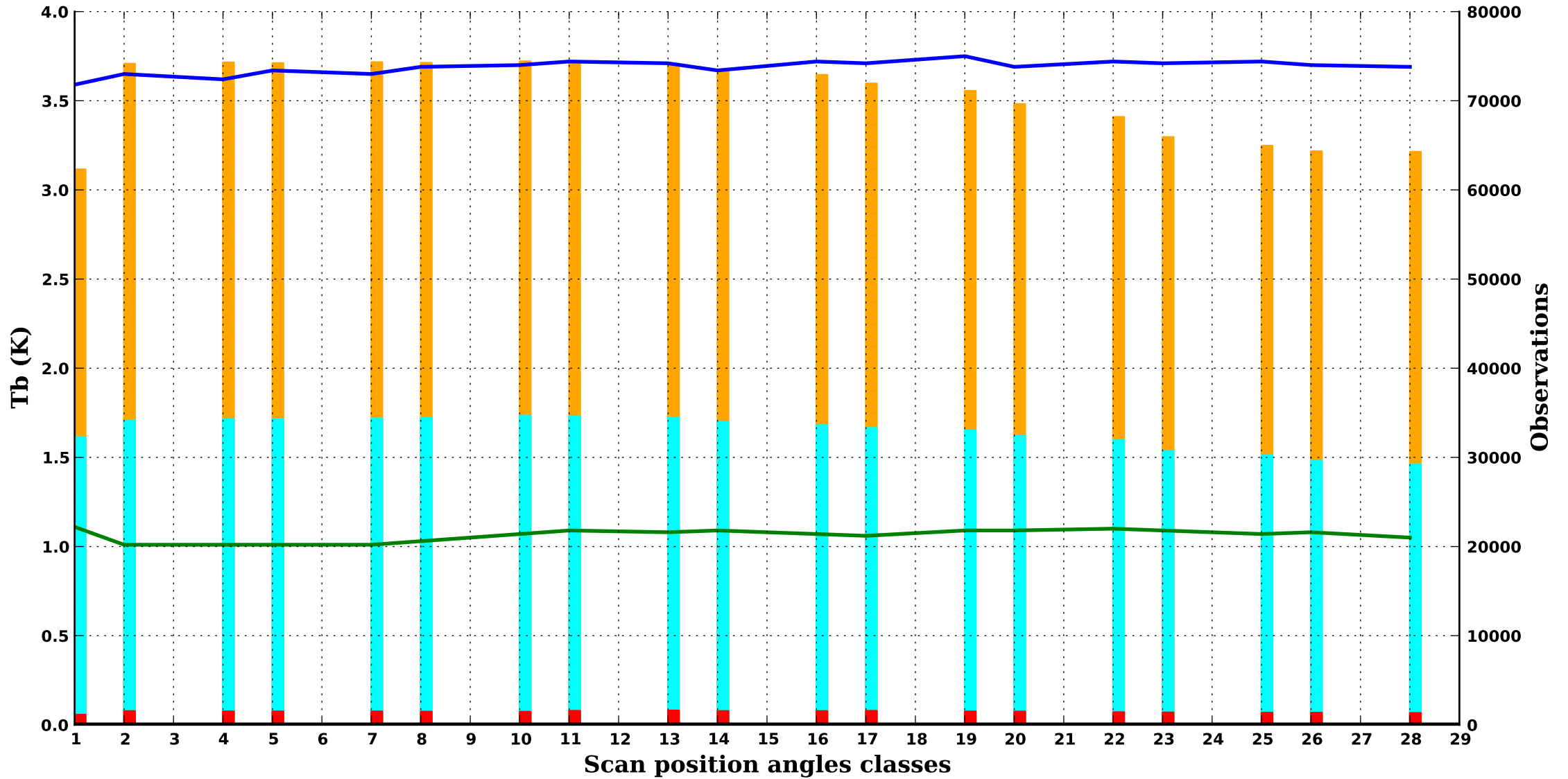
**GPM**

*Period : 202504*

*clear/*

**GMI 10**

**166.0V GHz, 900 hPa**



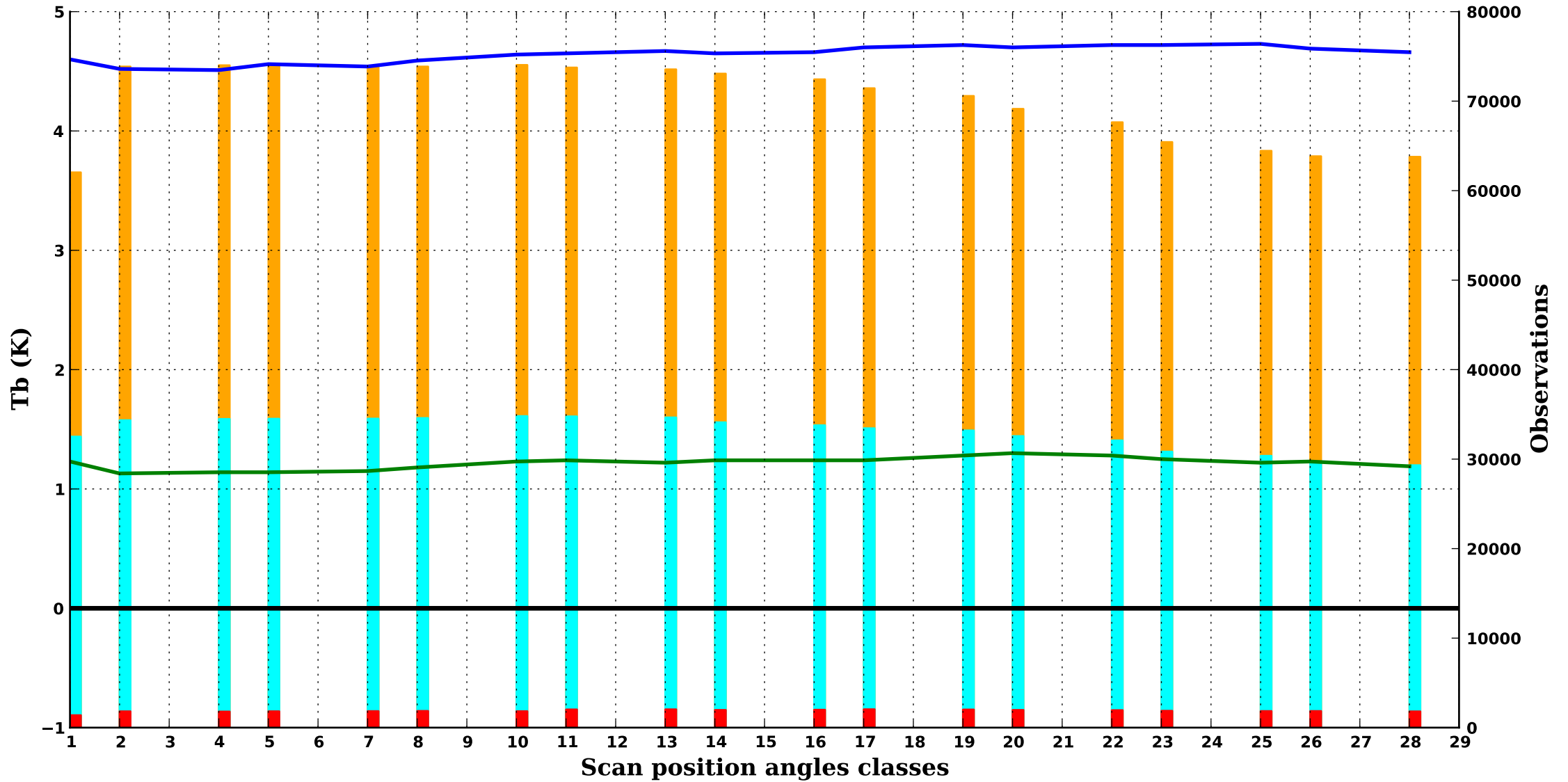
GPM

Period : 202504

clear/

GMI 11

166.0H GHz, 900 hPa



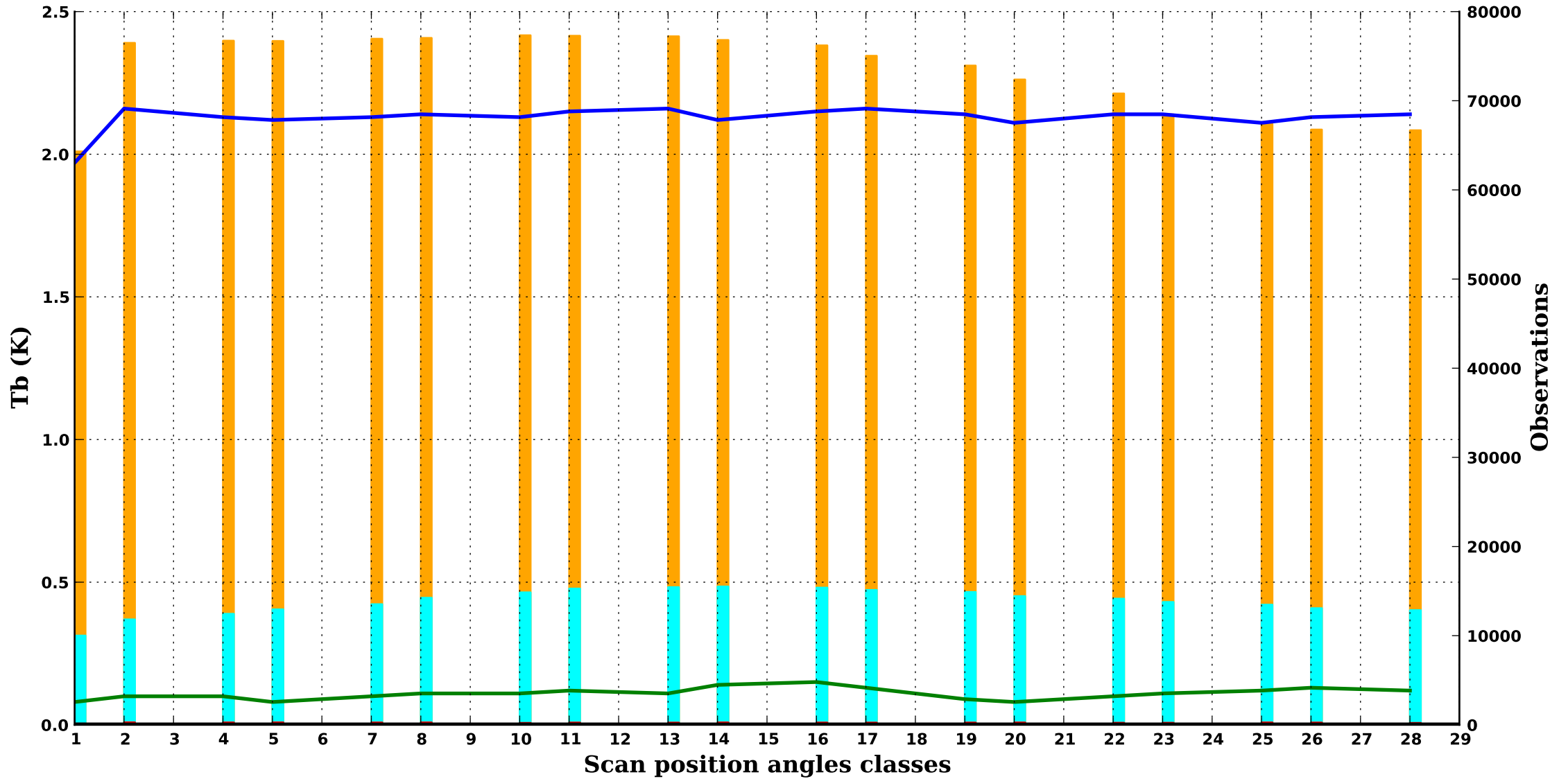
**GPM**

*Period : 202504*

*clear/*

**GMI 12**

**183.3V GHz, 500 hPa**



**GPM**

*Period : 202504*

*clear/*

**GMI 13**

**183.3H GHz, 750 hPa**

