

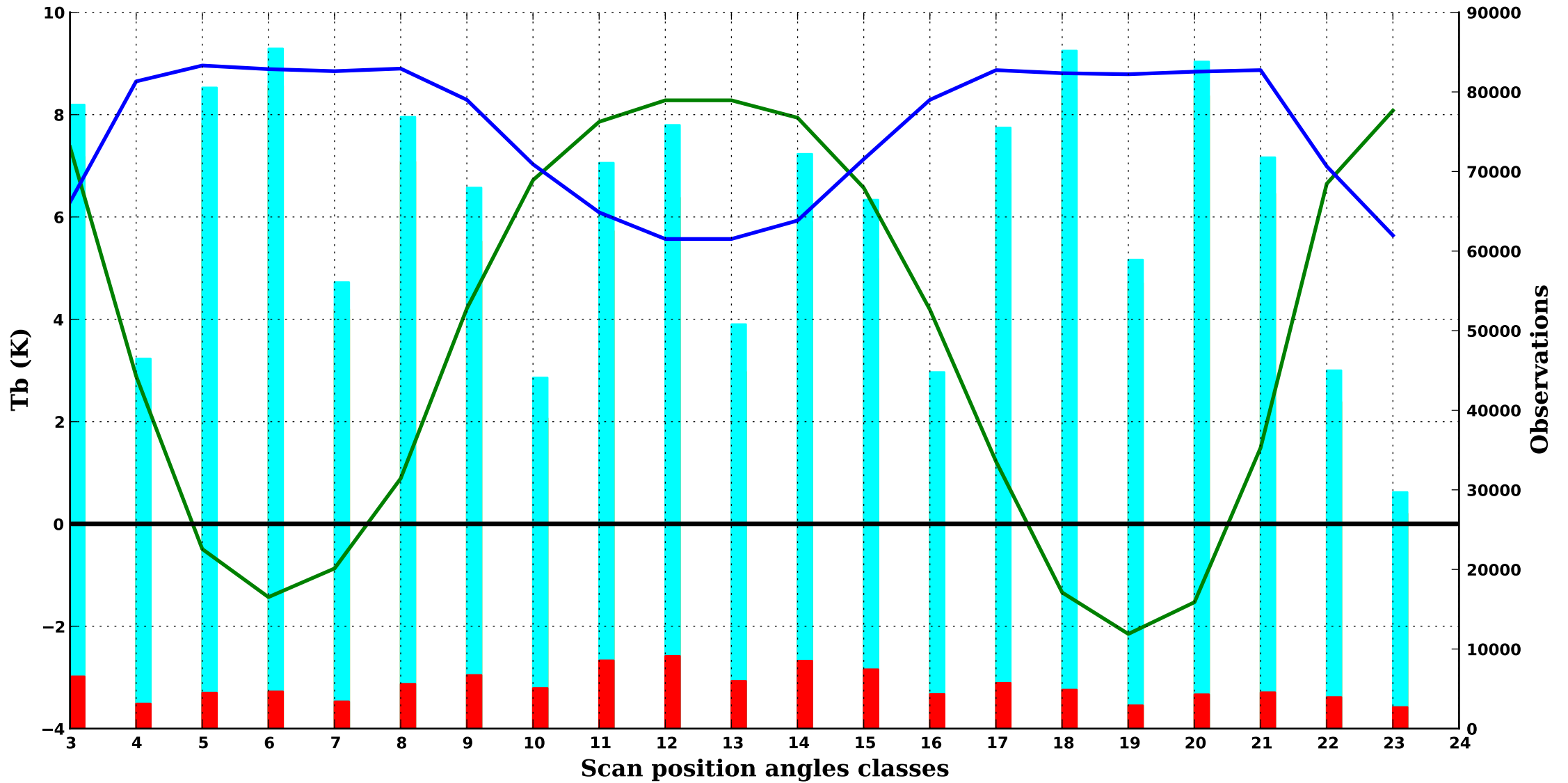
FY-3D

Period : 202403

cloudy/sea

MWHS2 1

89V GHz, 1000 hPa



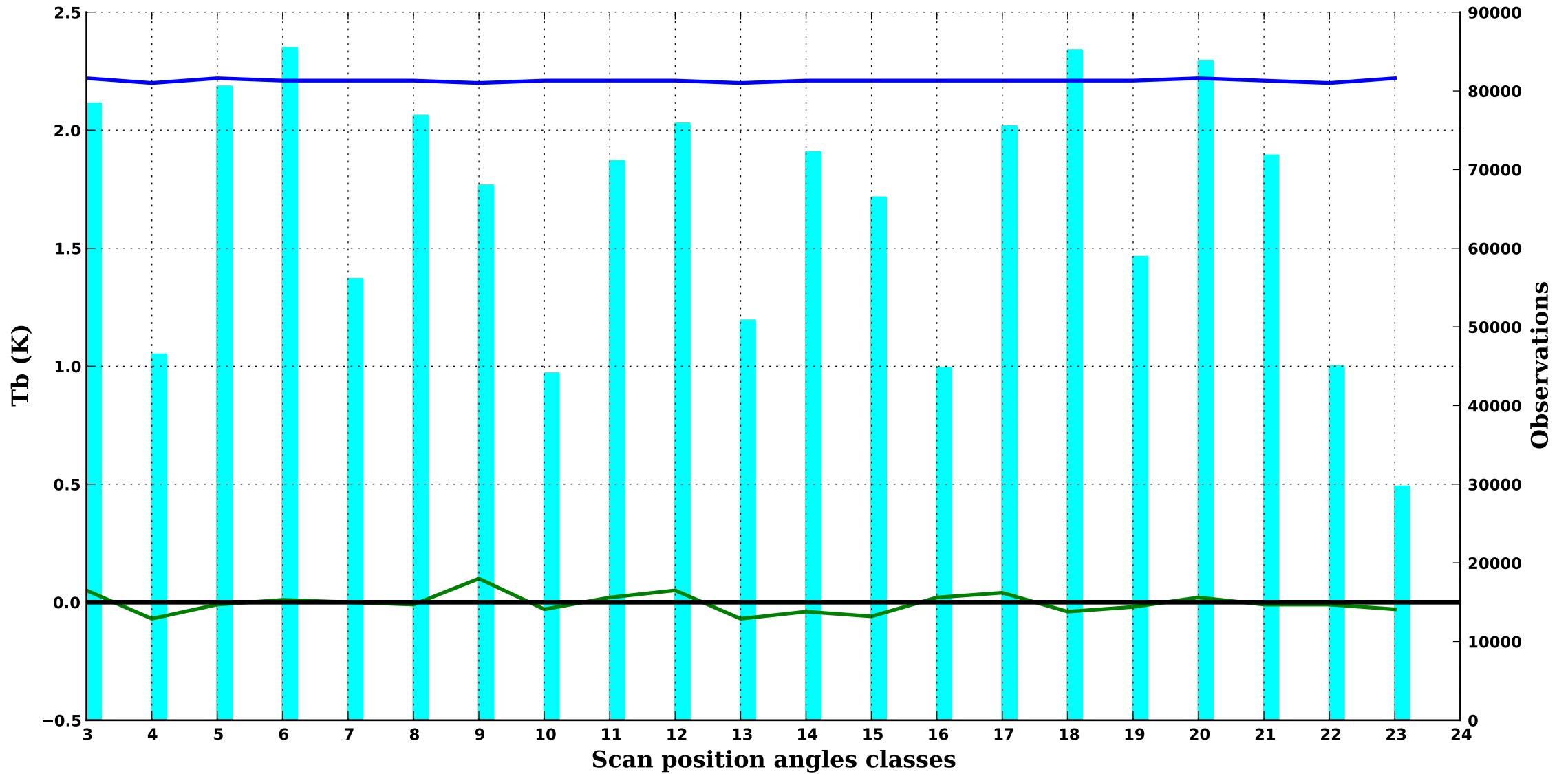
FY-3D

Period : 202403

cloudy/sea

MWHS2 2

118.67H GHz, 30 hPa



— bias obs-guess    — std obs-guess    ■ nb obs    ■ nb rejects    ■ nb gross errors

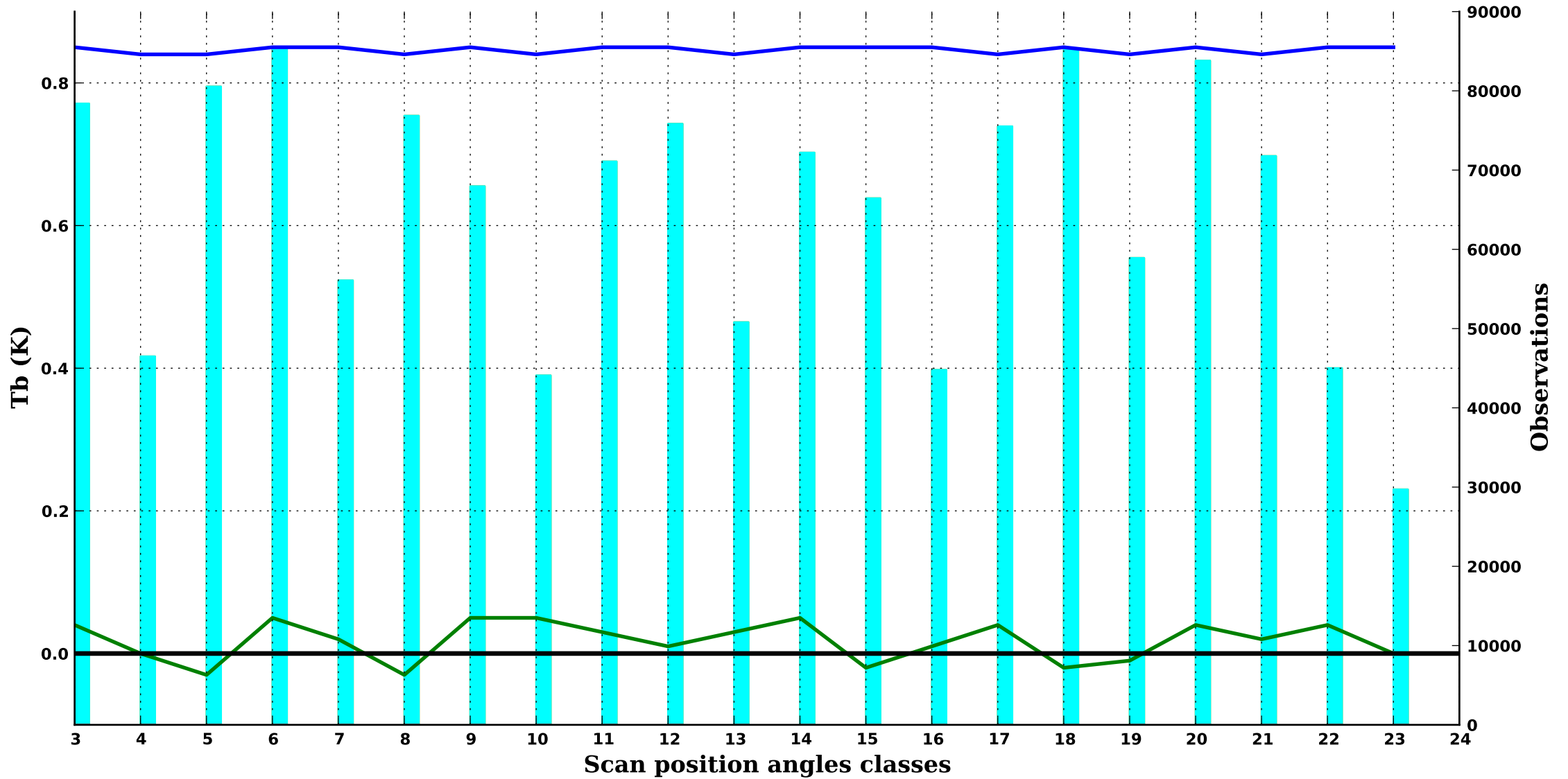
FY-3D

Period : 202403

cloudy/sea

MWHS2 3

118.55H GHz, 70 hPa



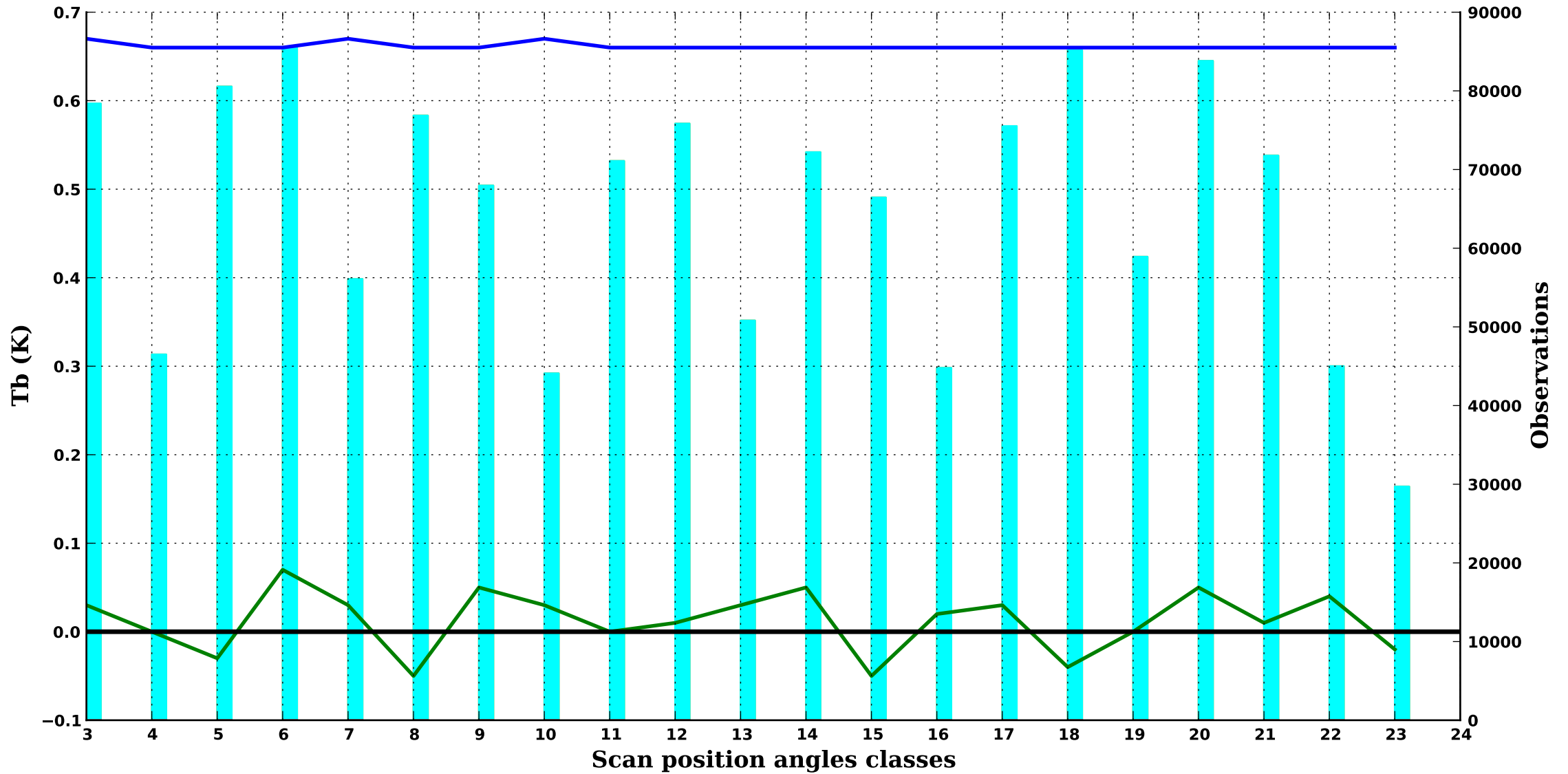
FY-3D

Period : 202403

cloudy/sea

MWHS2 4

118.45H GHz, 100 hPa



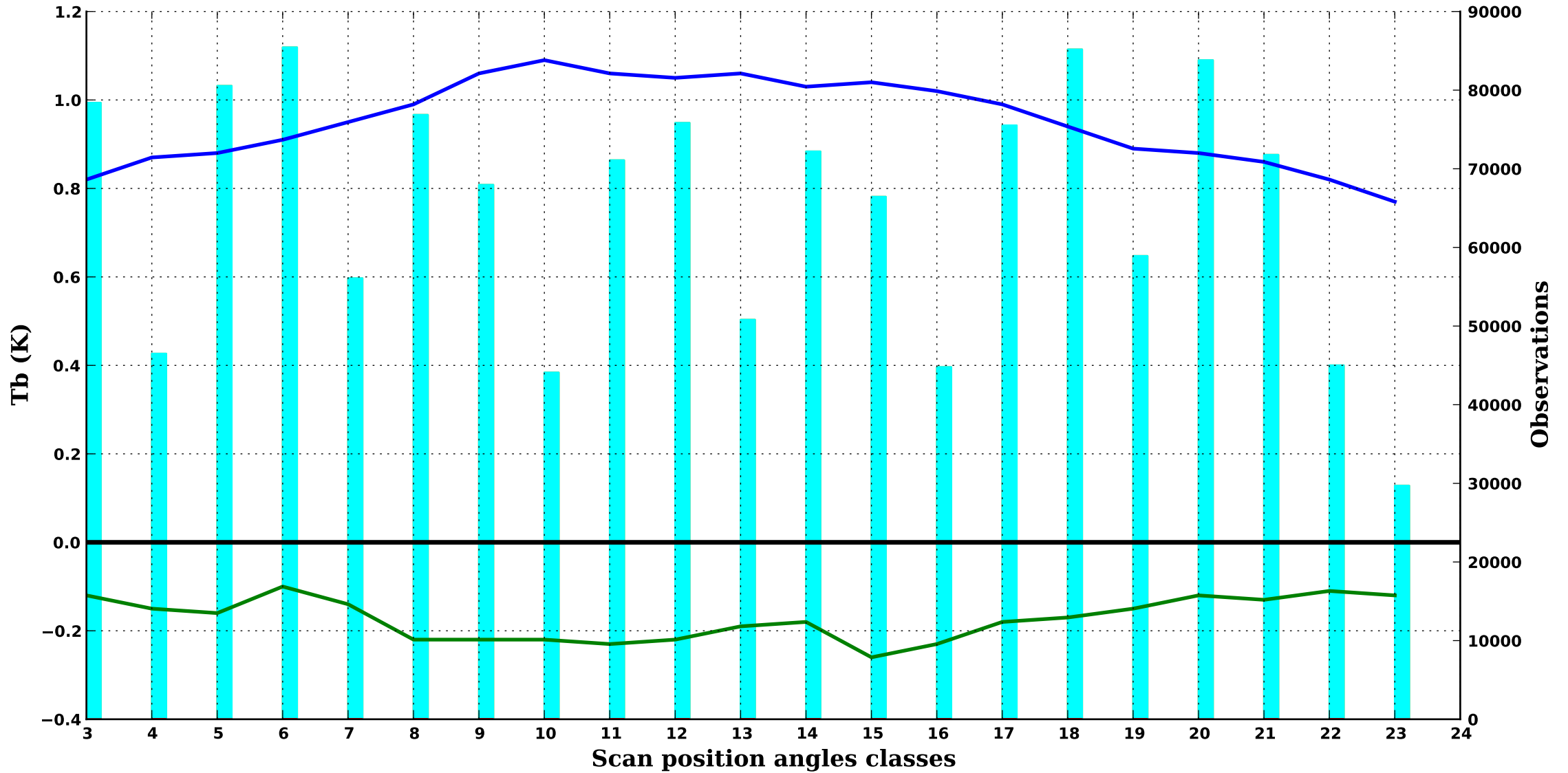
FY-3D

Period : 202403

cloudy/sea

MWHS2 5

117.95H GHz, 250 hPa



— bias obs-guess    — std obs-guess    ■ nb obs    ■ nb rejects    ■ nb gross errors

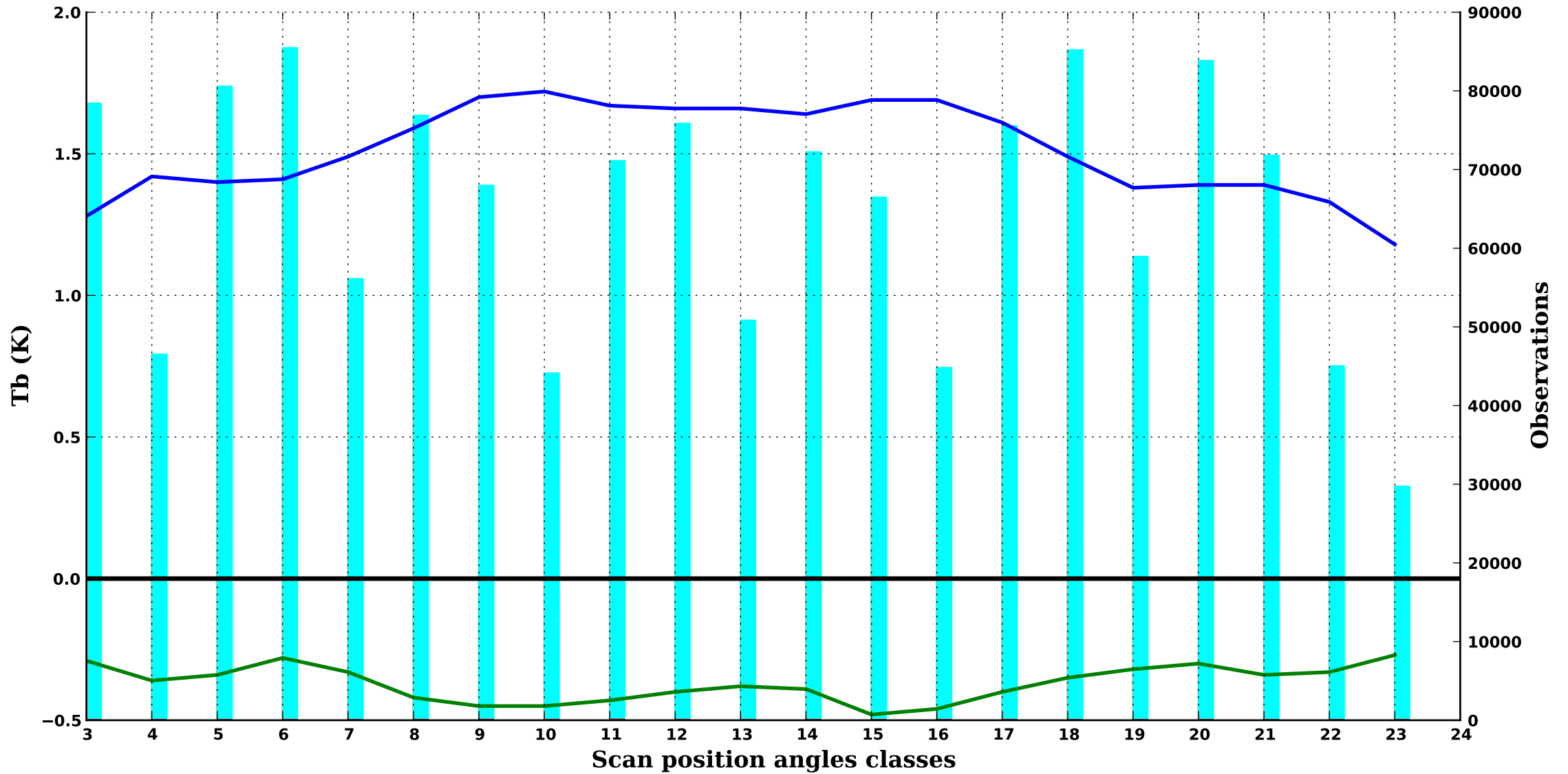
FY-3D

Period : 202403

cloudy/sea

MWHS2 6

117.65H GHz, 350 hPa



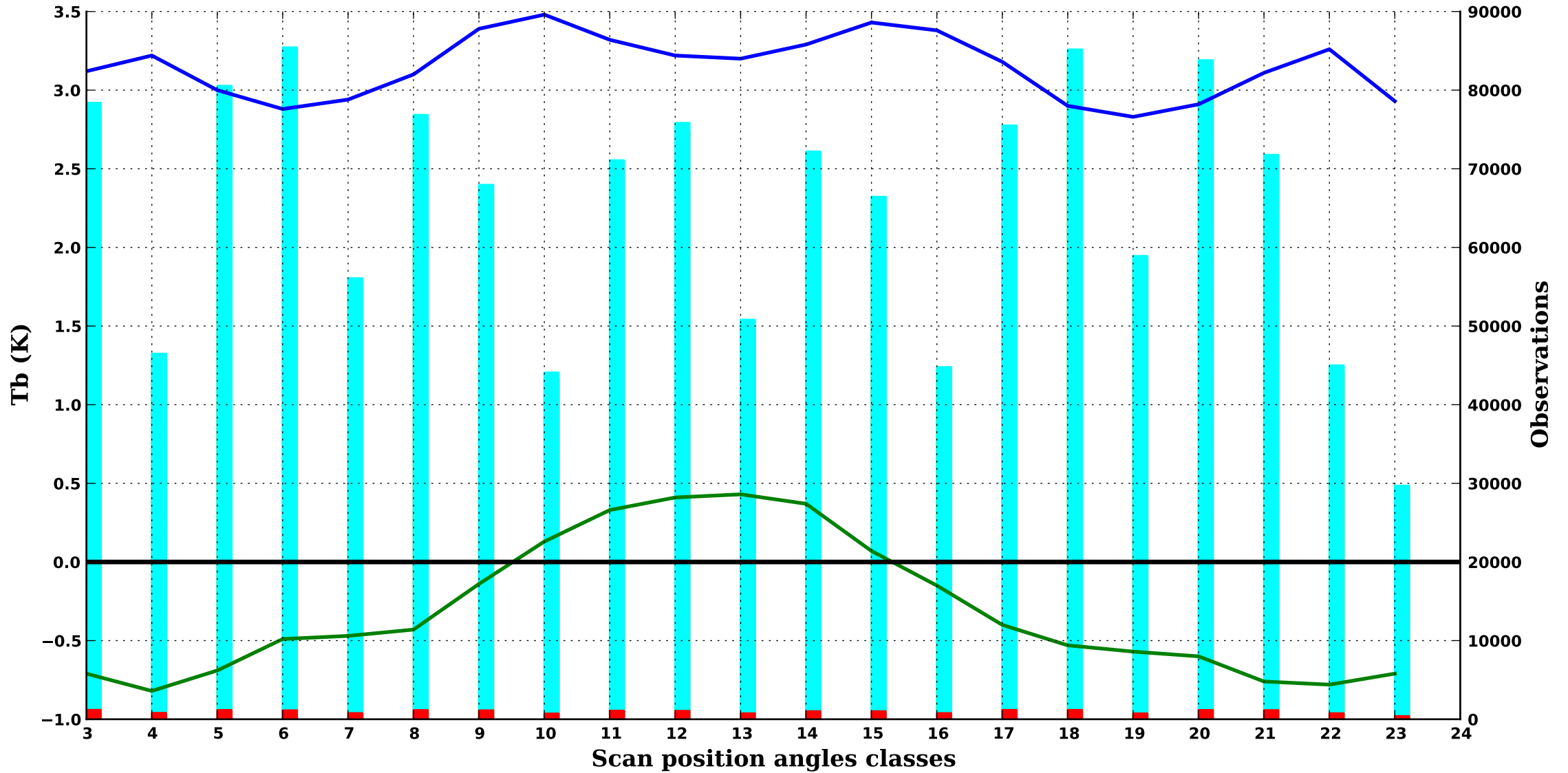
FY-3D

Period : 202403

cloudy/sea

MWHS2 7

116.25H GHz, 750 hPa



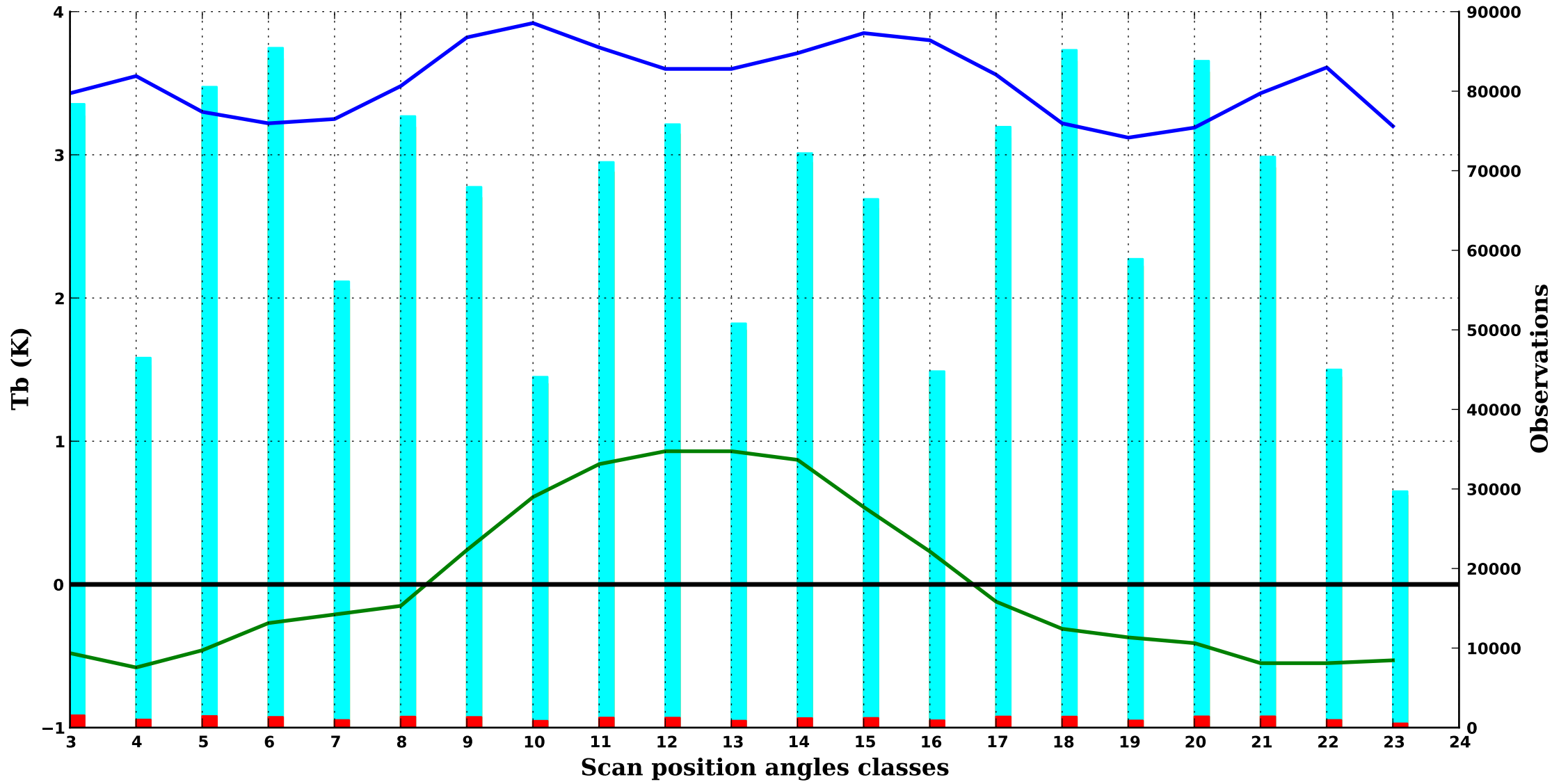
FY-3D

Period : 202403

cloudy/sea

MWHS2 8

115.75H GHz, 600 hPa





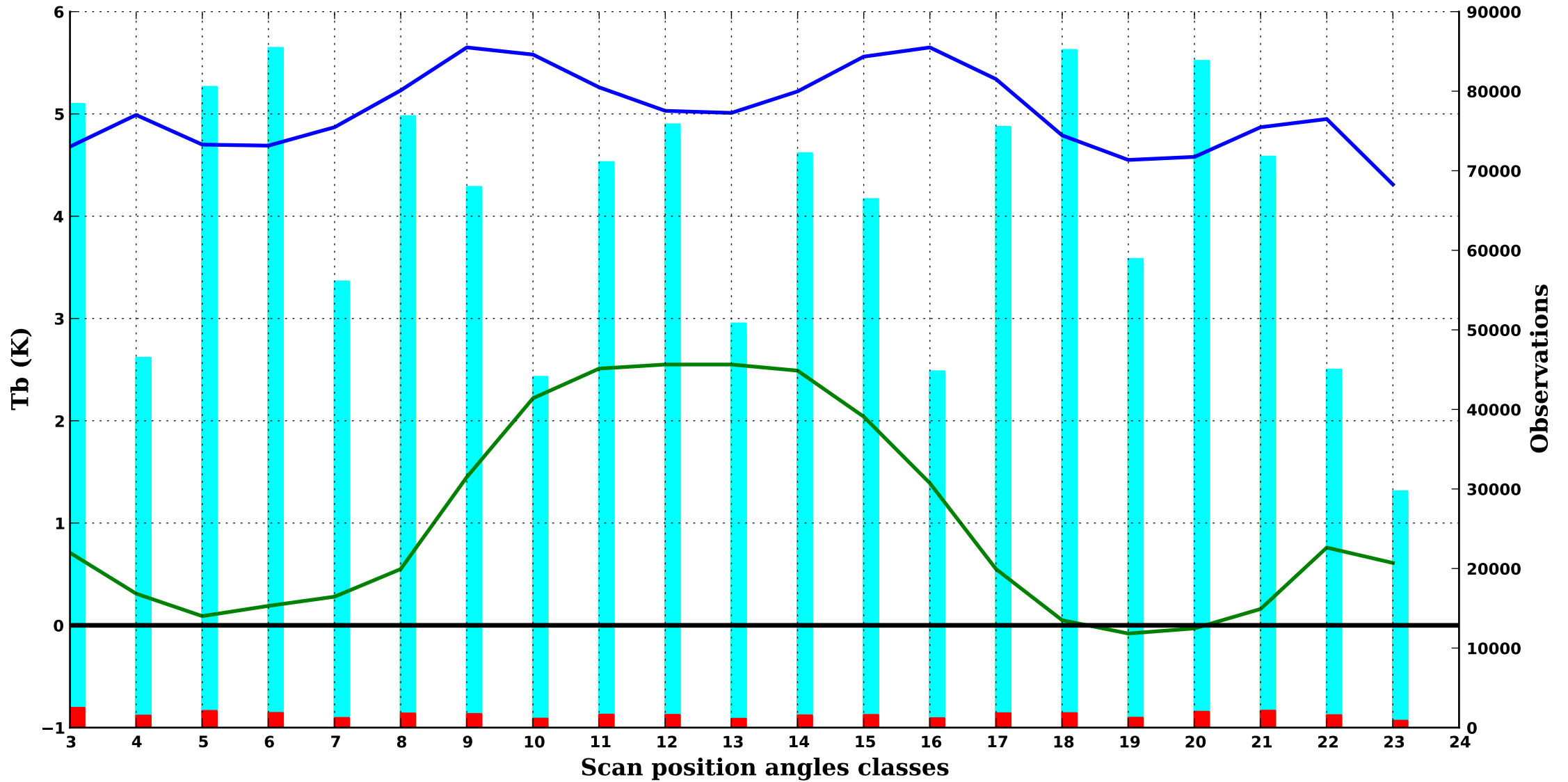
FY-3D

Period : 202403

cloudy/sea

MWHS2 9

113.75H GHz, 900 hPa



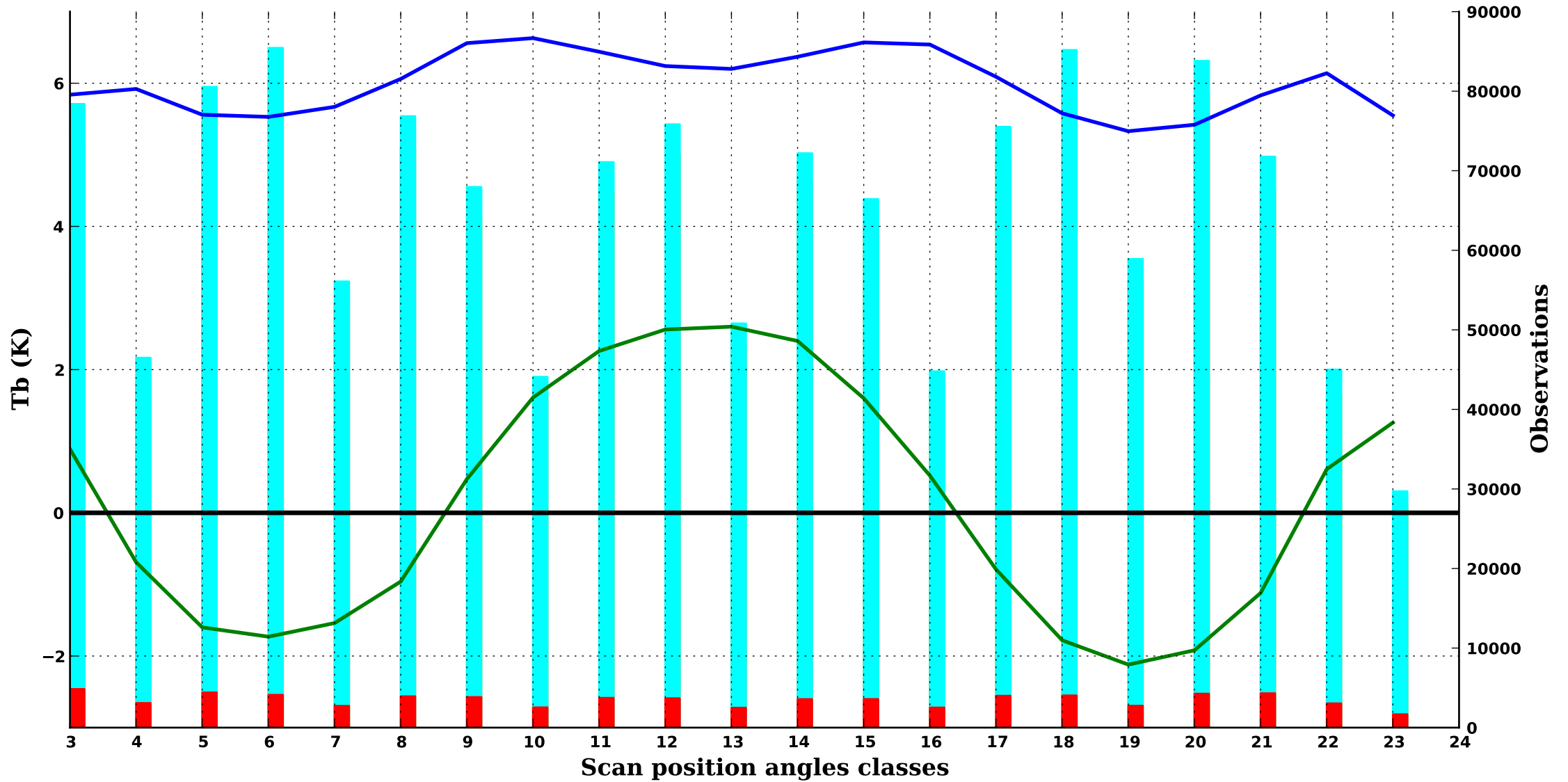
FY-3D

Period : 202403

cloudy/sea

MWHS2 10

150V GHz, 1000 hPa



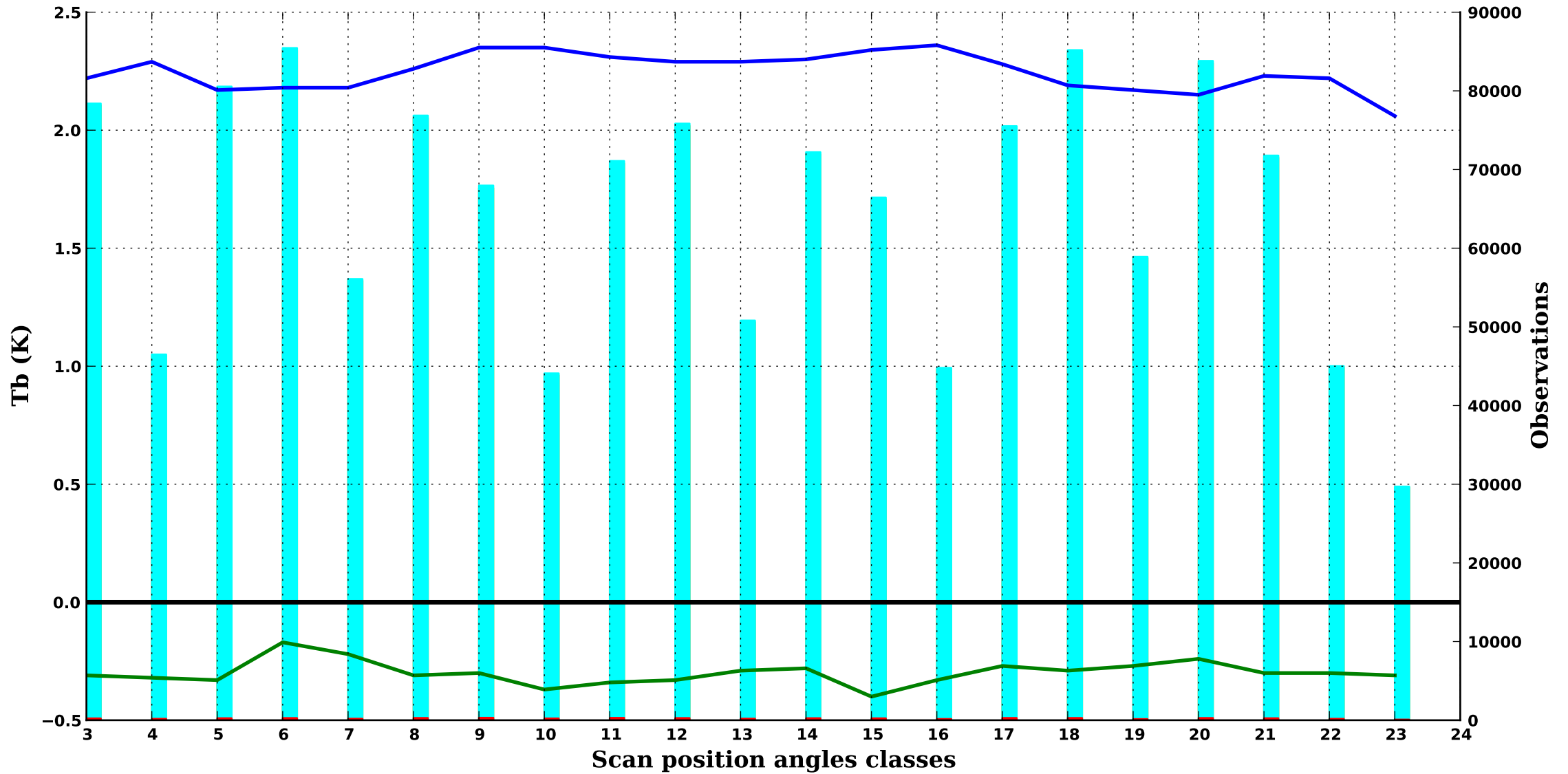
FY-3D

Period : 202403

cloudy/sea

MWHS2 11

182.31H GHz, 350 hPa



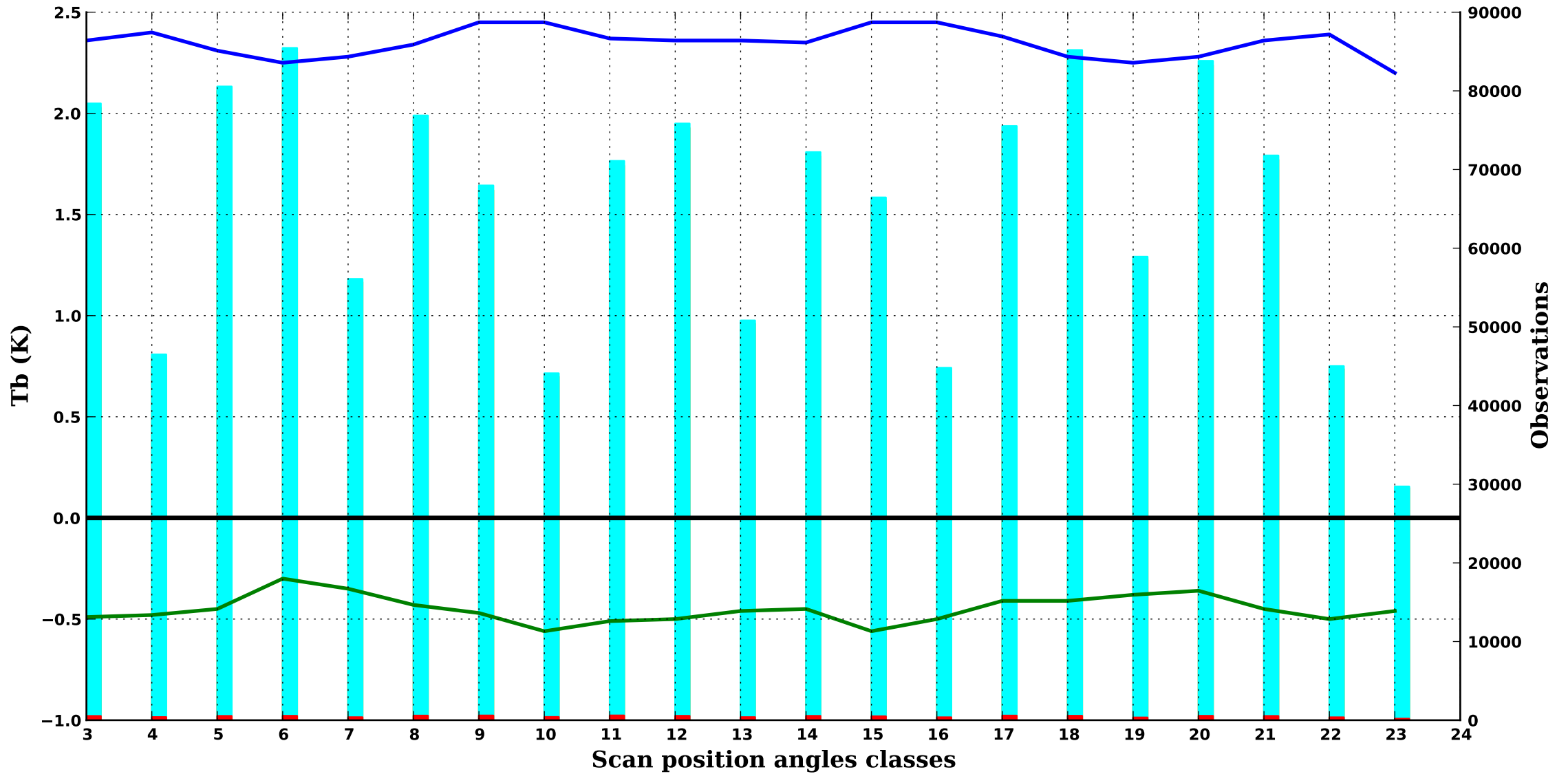
FY-3D

Period : 202403

cloudy/sea

MWHS2 12

181.51H GHz, 400 hPa



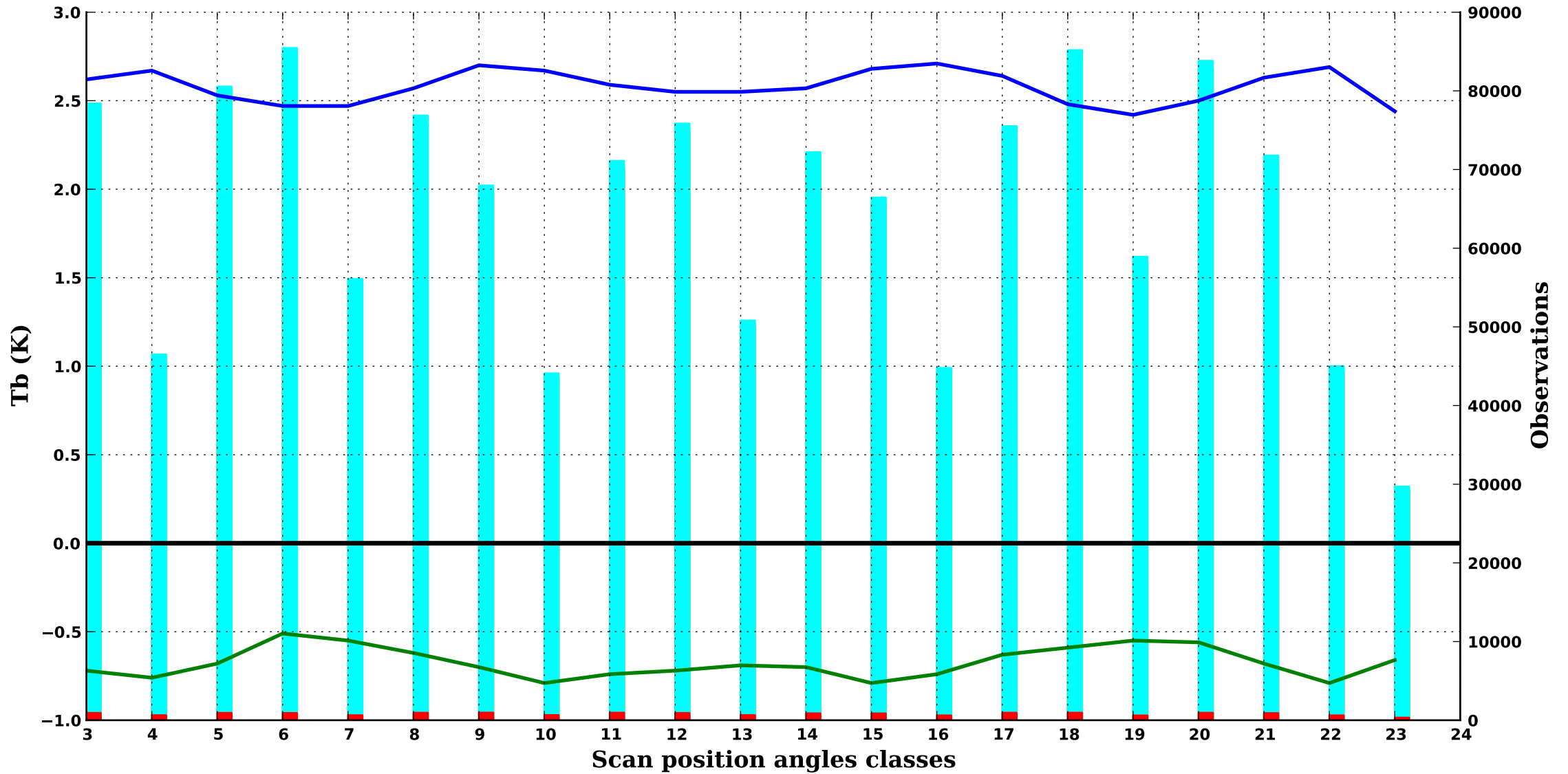
FY-3D

Period : 202403

cloudy/sea

MWHS2 13

180.31H GHz, 500 hPa



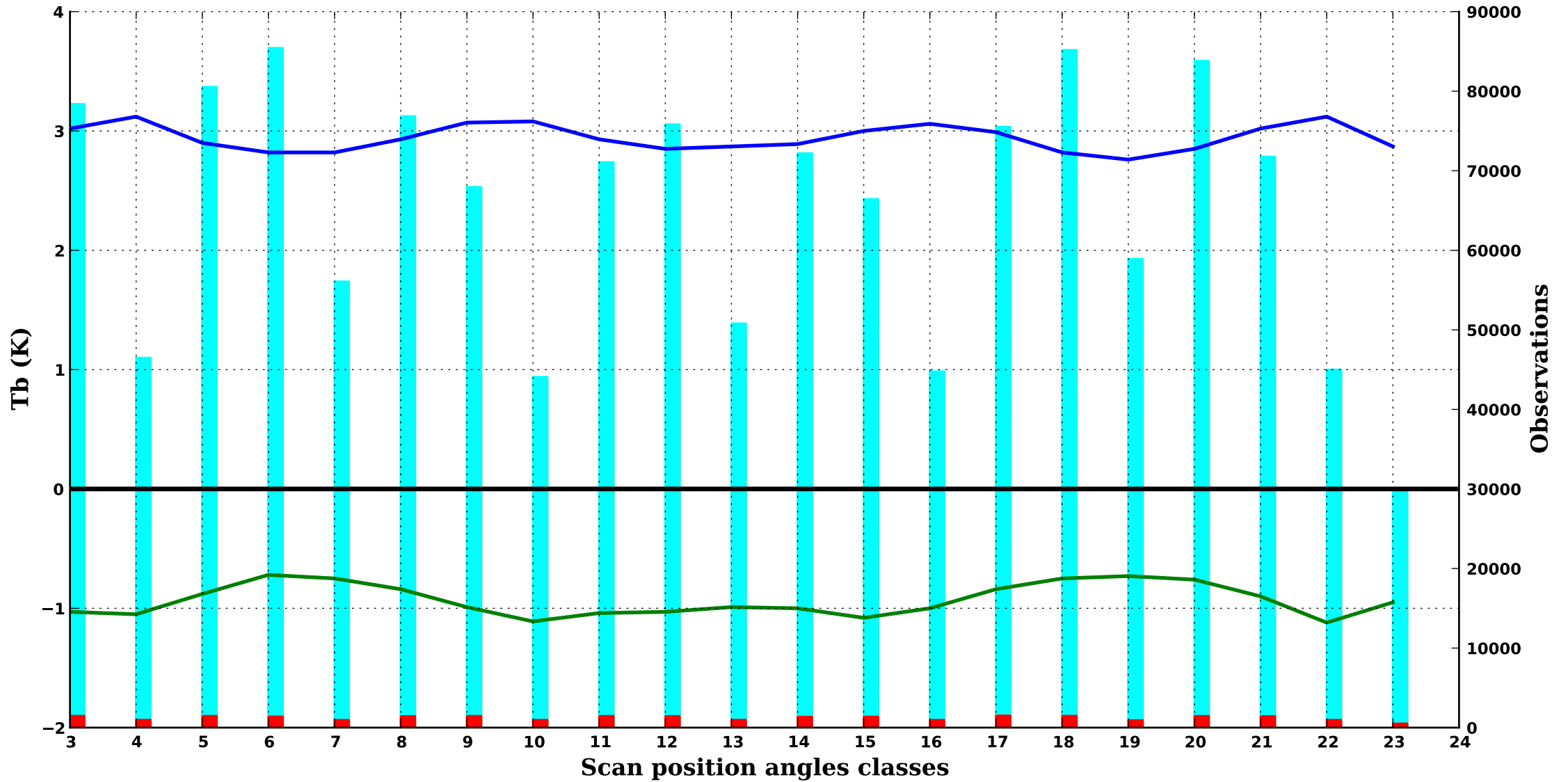
FY-3D

Period : 202403

cloudy/sea

MWHS2 14

178.81H GHz, 550 hPa



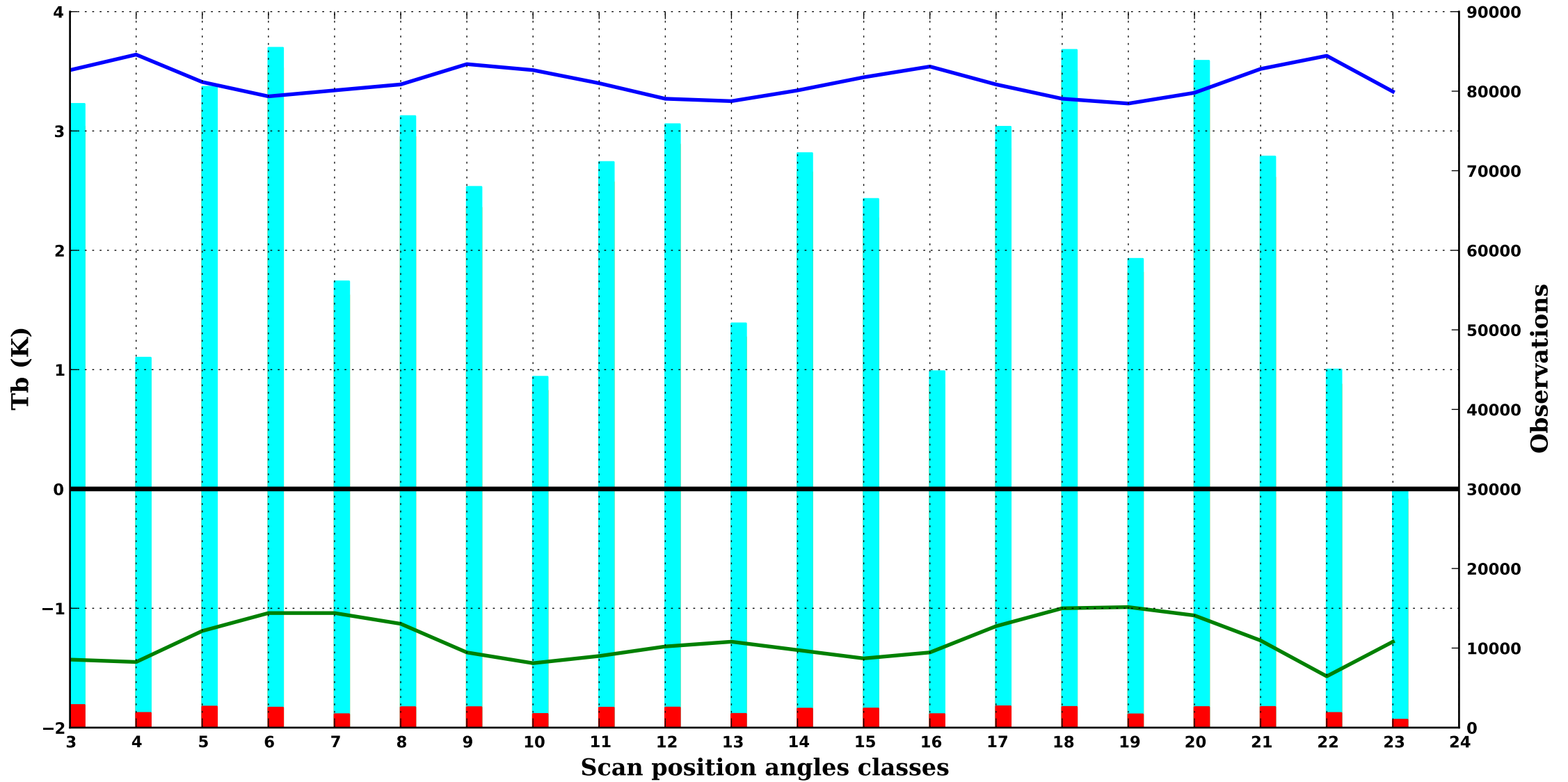
FY-3D

Period : 202403

cloudy/sea

MWHS2 15

176.31H GHz, 650 hPa



— bias obs-guess    — std obs-guess    ■ nb obs    ■ nb rejects    ■ nb gross errors